

# INSTALLATION INSTRUCTIONS

## Relay Service Kit 328347

Relay 269221 is replacing relay A-283180. Read the entire procedure before installing relay. Observe all safety precautions during kit installation.



**Accidental starting.**  
**Can cause severe injury or death.**

Disconnect battery cables before working on generator set (negative lead first and reconnect it last).

1. Disconnect battery, negative lead first.
2. Remove controller cover or panel to access relay.
3. Mark each lead using masking tape and the letters shown in Figure 1. Disconnect leads of the A-283180 relay.
4. Remove 1/4 in. push-on terminals from each lead.
5. Select the proper size terminal for each lead. Strip end of leads and crimp on 3/16 in. push-on terminals (X-431-24) 18-22 ga. or (X-431-42) 14-16 ga. Some terminals may not be used.

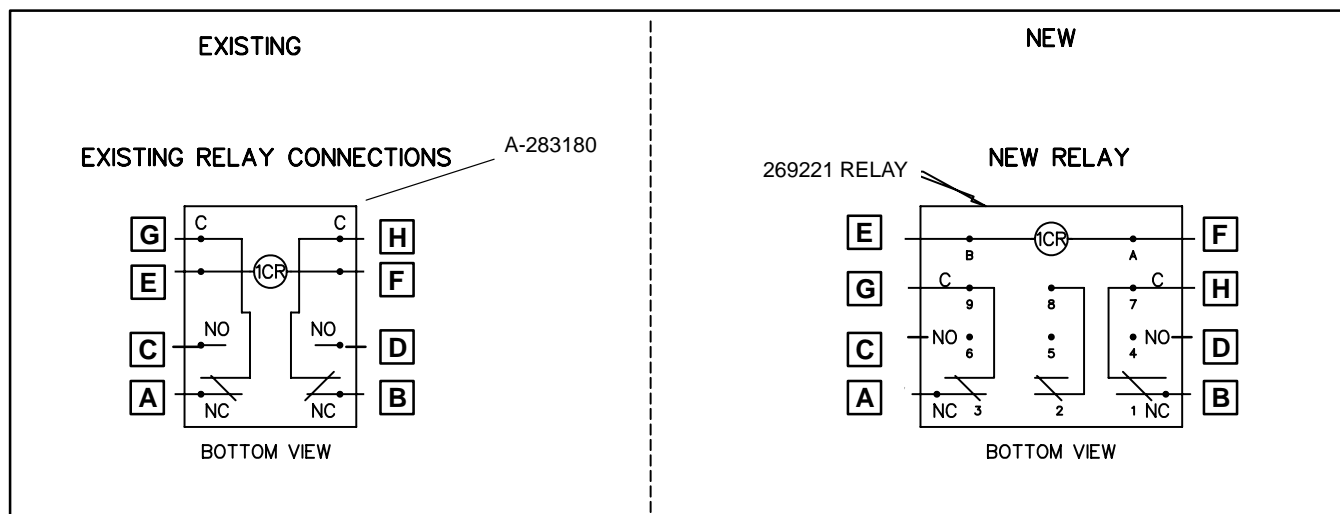
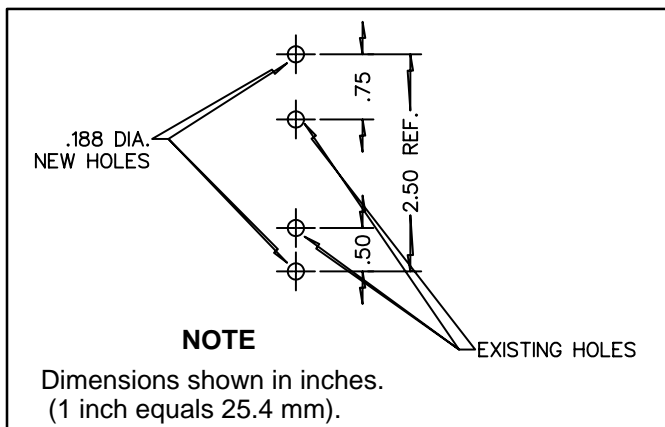


Figure 1. Wiring Diagram for 1CR and 2CR Relay



**Figure 2. Relay Drilling Instructions**

6. Remove the existing A-283180 relay.
7. Locate new relay as near as possible to old relay. Drill two .0188 in. (5 mm) dia. holes 2.5 in. (63.5 mm) apart to mount new relay. See Figure 2 for drilling instructions.
8. Mount new relay (269221) using two screws (X-51-15), lock washers (X-22-7), and nuts (X-72-4).

**NOTE**

Add additional leads using the same gauge wire and an insulink (not supplied) if leads are too short.

9. Connect controller leads to relay using wiring diagram found in Figure 1.
10. Replace controller cover or panel.
11. Reconnect battery, negative lead last.

**Parts List**

KIT 328347		
Qty.	Description	Part Number
2	Washer, #8 lock	X-22-7
8	Terminal, 3/16 push-on 18-22 ga.	X-431-24
8	Terminal, 3/16 push-on 14-16 ga.	X-431-42
2	Screw, 8-32 x 1/2	X-51-15
2	Nut, 8-32	X-72-4
1	Relay	269221