

---

## INSTALLATION INSTRUCTIONS

---

Original Issue Date: **6/95**

Model: **125/150ROZJ**

Market: **Industrial**

Subject: **Sound Shield Enclosure Kits PA-336260, 336260**

Sound shield enclosure provides sound dampening an operating generator set.

The sound shield is preassembled at the factory and some final assembly is required at the time of installation.



**Accidental starting.  
Can cause severe injury or death.**

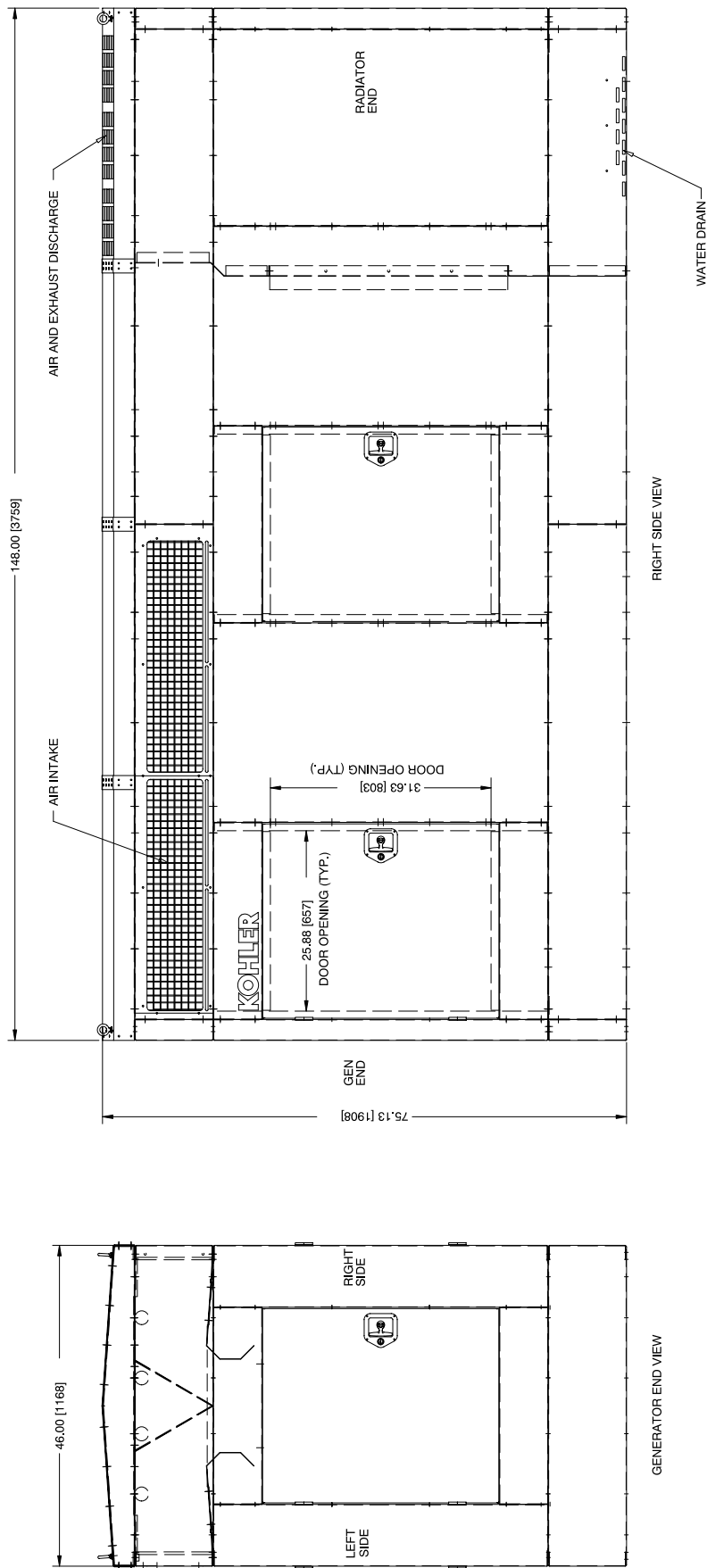
Disconnect battery cables before working on generator set (negative lead first and reconnect it last).

---

**Accidental starting can cause severe injury or death.** Turn generator set master switch to OFF position, disconnect power to battery charger, and remove battery cables (remove negative lead first and reconnect it last) to disable generator set before working on any equipment connected to generator set. The generator set can be started by automatic transfer switch or remote start/stop switch unless these precautions are followed.

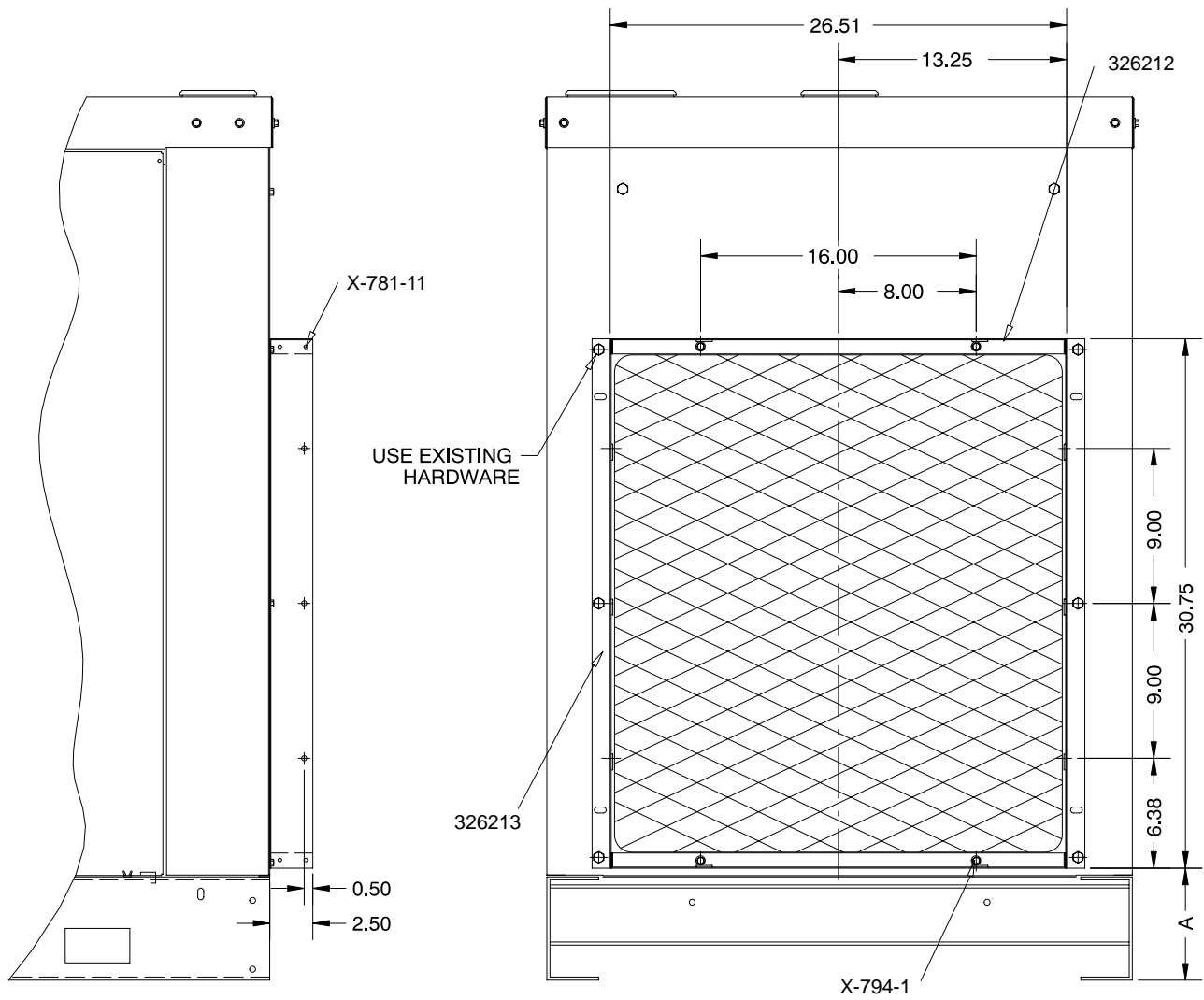
## Installation

1. Move generator set master switch to the OFF position. Disconnect the generator set engine starting battery, negative (–) lead first.
2. Mark sound shield access doors so they can be installed in their original locations. Doors and openings are factory aligned for fit and appearance.
3. Remove sound shield access doors.
4. Remove screws that attaching the sound shield enclosure to shipping pallet.
5. Remove drill screws attaching radiator duct flange to radiator shroud, if installed. See Figure 2. Do not remove bolts attaching radiator duct flange to the sound shield enclosure.
6. Remove any shipped-loose components, packing material, and literature from inside the sound shield. If exhaust piping is preassembled, be sure that exhaust system is disconnected at exhaust manifold.



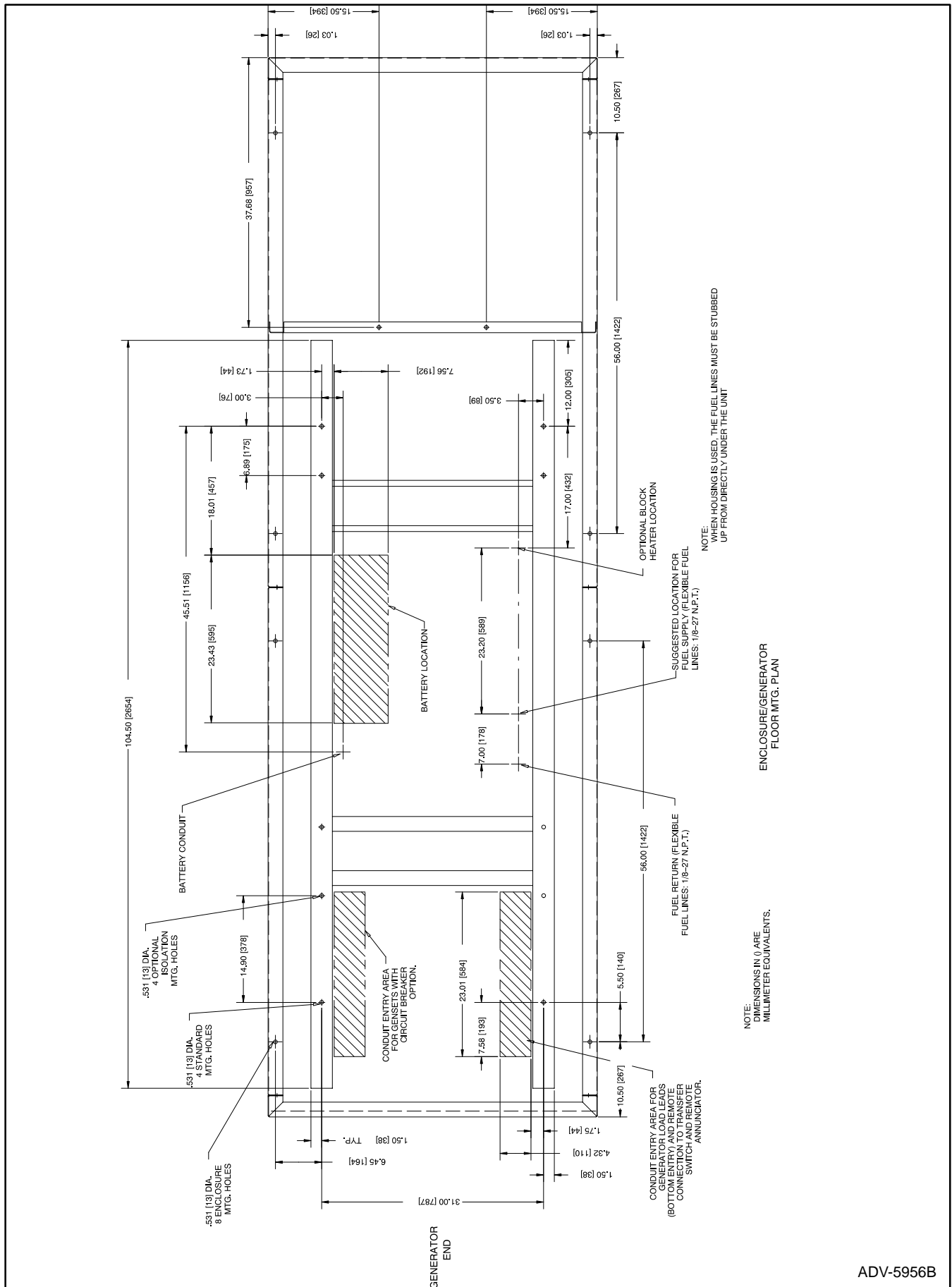
ADV -5956A-

Figure 1. Sound Shield Dimension Drawing



AR-324000B-

**Figure 2. Radiator Duct Flange Mounting**



**Figure 3. Sound Shield Dimension Drawing**

7. Check weight of sound shield and choose lifting equipment capable of handling the weight. Use current sound shield spec sheet for weights. Place sound enclosure on a solid flat surface until installed over generator set.

Hoist the enclosure, including the silencer, at each eye bolt on top of the enclosure. Lift slowly to prevent damage to generator set and/or sound enclosure. Because the silencer is mounted to the sound enclosure, the unit may require balancing to achieve vertical removal. Use load levelers as necessary to balance the load. If exhaust system is preassembled, use care that loose exhaust does not damage engine and/or sound enclosure.

8. Consult current generator set spec sheet for generator set weights. Lift generator set and place it on the mounting base using lifting equipment capable of handling the weight. Mount generator set to mounting base as required. Remove lifting equipment from generator set.
9. Raise sound shield enclosure and place over generator set. Observe each corner for adequate clearance while carefully lowering sound shield. Check that exhaust system is correctly aligned if unit has preassembled exhaust piping. Remove hoist equipment from sound shield enclosure.
10. Align radiator duct flange to radiator shroud. Attach radiator duct flange to radiator shroud using four drill screws (X-794-1). Predrill mounting holes if an impact wrench is not available. See Figure 2.
11. Secure sound shield enclosure to mounting base. See Figure 3 for hole locations.

#### NOTE

The exhaust system may be partially preassembled on some units.

12. Starting at exhaust muffler install exhaust pipes (336249, 222717, 336250). At each connection install exhaust clamps (289372). Install exhaust clamp (276949 or 336250) at exhaust manifold outlet. Do not yet tighten exhaust clamps at this time. See Figure 4.

With each section installed and exhaust pipe centered in hole of sound shield enclosure, final tighten all exhaust clamps.

13. Install fiberglass exhaust wrap (19000 09400) over exhaust piping starting at exhaust manifold. Overlap exhaust wrap about 1/3 to 1/2 of the material width. Use hose clamp (X-426-5) to secure the beginning of the exhaust wrap. The end of the exhaust wrap must stop at or beyond the point where exhaust the pipe goes through the hole in the sound shield enclosure. Secure end of exhaust wrap with second hose clamp (X-426-5).
14. Finalize installation of generator set. Install battery rack and cables. Connect fuel supply and return line to generator set. Make all AC connections and replace junction box panels. Connect all remote electrical wiring (remote emergency stop, remote annunciator, etc.).
15. Install all sound shield enclosure access doors in their original locations. If required, readjust doors for fit and appearance. Check that all hardware has been tightened. With generator set master switch in the OFF position, reconnect engine starting battery, negative (–) lead last.

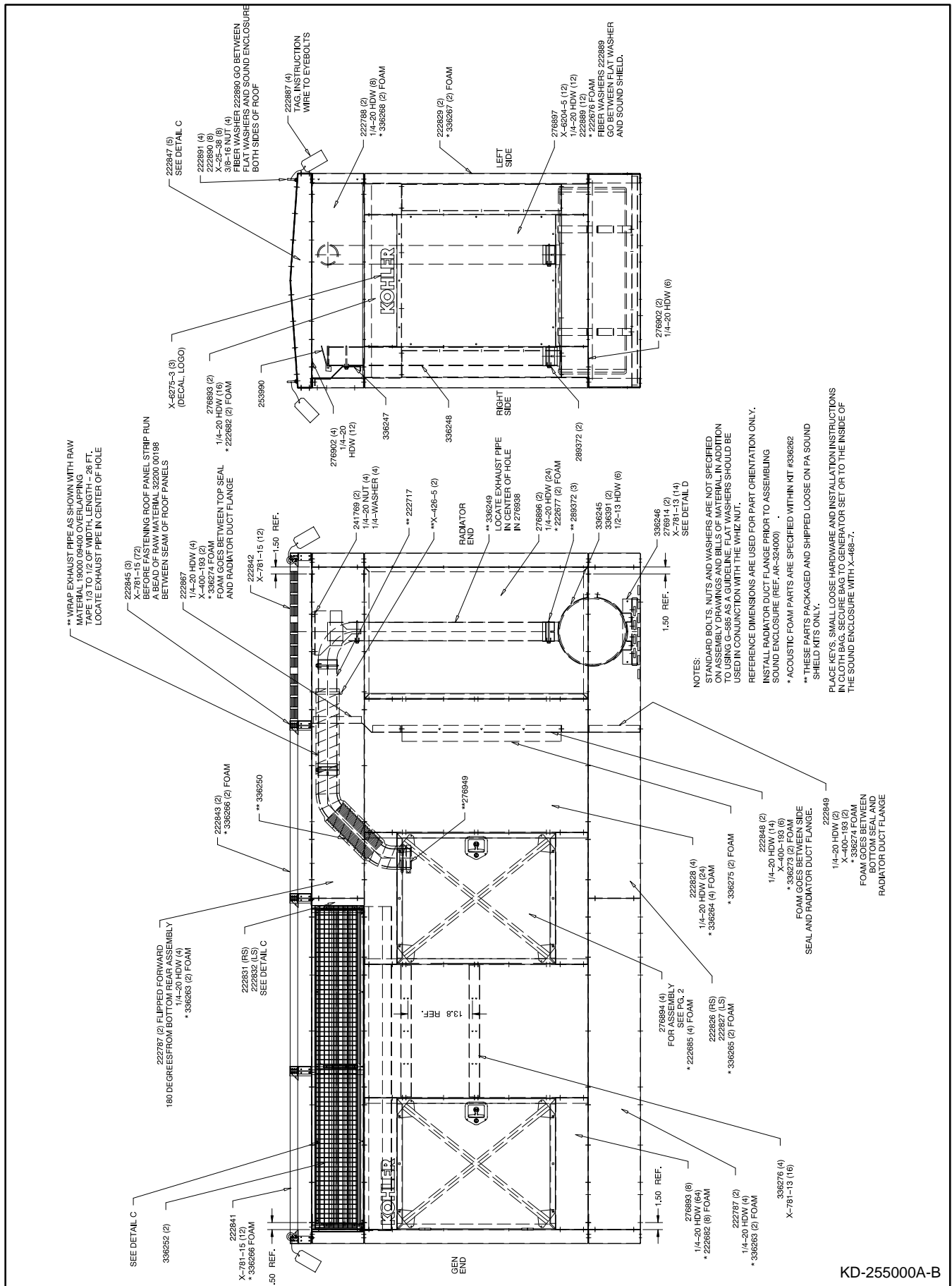


Figure 4. Sound Shield Assembly

# Parts List

KITS PA-336260 and 336260		
Qty.	Description	Part Number
8	Washer, plain	X-25-38
10	Spacer	X-400-193
2	Clamp, hose 4.875/3.62	X-426-5
2	Tie, cable	X-468-7
12	Nut, reatiner	X-6204-5
3	Logo, Kohler	X-6275-3
8	Rivet, pop 1/8 in. (3 mm) aluminum/steel	X-781-11
90	Rivet, pop 1/8 in. (3 mm) stainless	X-781-13
152	Rivet, pop 3/8 in. (9 mm) aluminum/stainless	X-781-15
4	Screw, drill	X-794-1
32	Foam, seal tape (ft.)	19000 08100
26	Insulation, fiberglass (ft.)	19000 09400
53	Foam, PVC seal tape (ft.)	19010 08118
1	Pipe, exhaust	222717
4	Channel, solid	222787
4	Channel, end	222788
1	Channel, drain	222826
1	Channel, drain	222827
4	Support, side door	222828
4	Support, corner	222829
1	Channel, air intake	222831
1	Channel, air intake	222832
1	Panel, roof	222841
1	Panel, roof	222842
2	Panel, roof	222843
3	Strip, roof	222845
5	Support, roof	222847
2	Seal, side	222848
1	Seal, bottom	222849
1	Seal, top	222867
2	Support, baffle	222868
4	Tag, instruction	222887
12	Washer, fiber	222889
8	Washer, fiber	222890
4	Bolt, eye	222891

KITS PA-336260 and 336260		
Qty.	Description	Part Number
2	Mount, controller	241769
1	Cap, rain	253990
12	Support, door	276893
5	Door	276894
2	Panel,side	276896
1	Door, front	276897
12	Gusset, corner	276902
2	Stiffener, muffler support	276914
10	Brace, door	276915
5	Latch, key locking	276918
1	Clamp, manifold	276949
5	Clamp, exhaust pipe 4 in.	289372
40	Screw, flat head machine	295098
10	Hinge, split	297601
2	Frame, air duct	326212
3	Frame, air duct	326213
1	Muffler, exhaust	336245
1	Support, muffler	336246
1	Support, exhaust	336247
1	Pipe, exhaust	336248
1	Pipe, exhaust	336249
1	Pipe, flex exhaust	336250
2	Baffle	336251
2	Screen	336252
1	Support, foam wedge	336253
2	Strap, foam wedge	336254
2	Strap, foam wedge	336255
2	Support, screen	336256
2	Support, screen	336257
4	Louver, air intake	336258
2	Louver, air intake bottom	336259
1	Kit, acoustic foam	336262
4	Bracket, battery charger	336276
2	Clamp, muffler	336391