
INSTALLATION INSTRUCTIONS

Original Issue Date: 8/95

Model: 6-15 kW

Market: Industrial

Subject: Inner Tank Leak Alarm Kit PA-224805

The inner tank leak alarm indicates the inner tank has leaked into the outer tank and the double-wall subbase fuel tank should be replaced.



Accidental starting.
Can cause severe injury or death.

Disconnect battery cables before working on generator set (negative lead first and reconnect it last).

Accidental starting can cause severe injury or death. Turn generator set master switch to OFF position, disconnect power to battery charger, and remove battery cables (remove negative lead first and reconnect it last) to disable generator set before working on any equipment connected to generator set. The generator set can be started by automatic transfer switch or remote start/stop switch unless these precautions are followed.

⚠ WARNING



Fire.
Can cause severe injury or death.

Do not smoke or permit flame or spark to occur near fuel or fuel system.

⚠ WARNING



Explosive fuel vapors.
Can cause severe injury or death.

Use extreme care when handling, storing, and using fuels.

Installation

1. Move the generator set master switch to the OFF position. Disconnect generator set engine starting battery, negative (–) lead first.
2. Attach leak alarm bracket (336505) to annunciator box assembly (A-224861).
3. Mount annunciator box assembly to junction box. See Figure 1.
4. Remove pipe plug from tank for leak alarm sensor. See Figure 1 for pipe plug location. Apply pipe sealant to threads of leak alarm (A-276795) and install in tank.
5. Connect leak alarm wiring harness (226197) to annunciator box assembly and leak alarm sensor. See Figure 1.
6. Connect wire harness power leads to either battery or starter. See Leak Alarm Battery Connections Figure 1.
7. With generator set master switch in the OFF position, reconnect engine starting battery, negative (–) lead last.

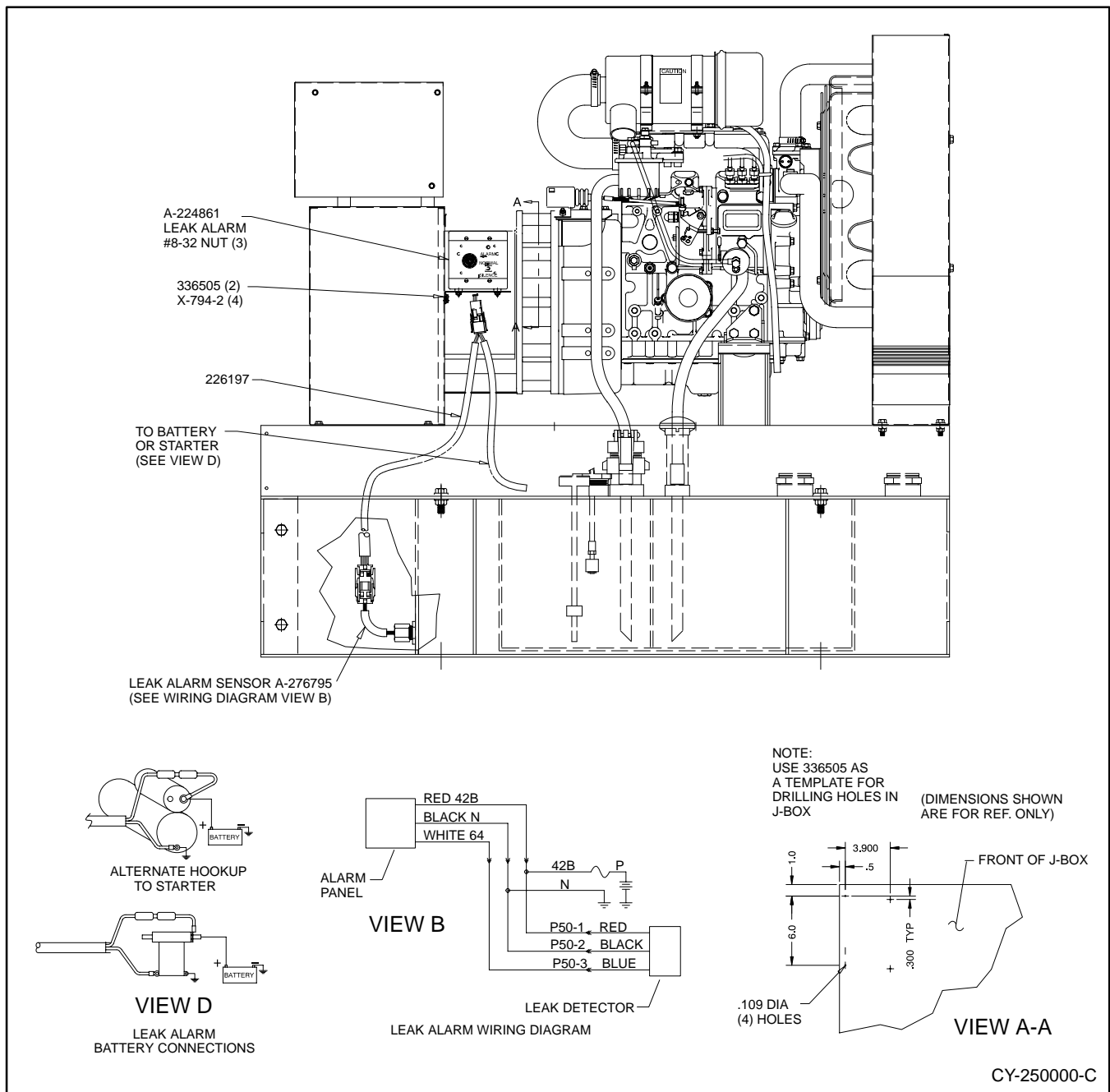


Figure 1. 6-15 kW Double-Wall Subbase Fuel Tank Leak Alarm

| Parts List | | |
|---------------|----------------------------|-------------|
| KIT PA-224805 | | |
| Qty. | Description | Part Number |
| 1 | Box, annunciator | A-224861 |
| 1 | Sensor, leak alarm | A-276795 |
| 1 | Harness, leak alarm wiring | 226197 |
| 1 | Bracket, leak alarm | 336505 |
| 2 | Screw, drill | X-794-2 |