

INSTALLATION INSTRUCTIONS

Original Issue Date: 1/00

Model: 8.5/11RMY and 17/22RY

Market: Industrial

Subject: Exhaust Guard and Elbow Kits GM10671-KP1 and GM10672-KP1

Generator Set Model	Kit Number
8.5/11RMY	GM10671-KP1
17/22RY	GM10672-KP1

Introduction

The exhaust guard and elbow kit redirects the engine exhaust downward and prevents contact with the hot exhaust pipe.

Use exhaust elbow kit number GM10671-KP1 on model 8.5RMY and 11RMY units equipped with weather housings. Newer units equipped with sound shield enclosures include a similar elbow and spark arrestor mounted inside the enclosure. Do not use this kit on the newer sound-shield units.


Model 17RY and 22RY units now include the exhaust elbow kit with the weather housing. Use exhaust elbow kit number GM10672-KP1 on earlier units.

Read the entire installation procedure and compare the kit parts with the parts list at the end of this publication before beginning installation. Perform the steps in the order shown.

See Figure 1 and Figure 2 for installed kit illustrations.

Safety Precautions

Observe the following safety precautions while installing the kit.

⚠ WARNING

Hot engine and exhaust system. Can cause severe injury or death. Do not work on the generator set until it cools.

⚠ WARNING



Accidental starting.
Can cause severe injury or death.

Disconnect the battery cables before working on the generator set. Remove the negative (-) lead first when disconnecting the battery. Reconnect the negative (-) lead last when reconnecting the battery.

Disabling the generator set. Accidental starting can cause severe injury or death. Before working on the generator set or connected equipment, disable the generator set as follows: (1) Move the generator set master switch to the OFF position. (2) Disconnect the power to the battery charger. (3) Remove the battery cables, negative (-) lead first. Reconnect the negative (-) lead last when reconnecting the battery. Follow these precautions to prevent starting of the generator set by an automatic transfer switch, remote start/stop switch, or engine start command from a remote computer.

Generator set operation. Carbon monoxide can cause severe nausea, fainting, or death. Carbon monoxide is an odorless, colorless, tasteless, nonirritating gas that can cause death if inhaled for even a short time. Avoid breathing exhaust fumes when working on or near the generator set. Never operate the generator set inside a building unless the exhaust gas is piped safely outside. Never operate the generator set where exhaust gas could accumulate and seep back inside a potentially occupied building.

Installation

1. Place the generator set master switch in the OFF position.
2. Wait for the generator set to cool.
3. Disconnect the power to the battery charger, if equipped.
4. Disconnect the generator set starting battery cables, negative (-) lead first.
5. On 17 and 22 RY models **only**, measure and cut 2 in. (50.8 mm) off the outlet end of the generator set exhaust pipe. Use a file to remove any burrs or rough edges from the end of the cut exhaust pipe.

Note: Do not shorten the exhaust pipes on 8.5 or 11 RMY generator sets.

6. Slide the shorter end of the exhaust elbow (337332 or GM10670) over the end of the generator set exhaust pipe.
7. Secure the exhaust elbow using the clamp (X-722-8 or X-722-5). Tighten the clamp.
8. On 8.5 and 11 RMY generator sets, slide the spark arrestor (345107) onto the end of the exhaust elbow and secure it with the #8 self-tapping screw provided.
9. Measure, mark, and drill one 0.165 in (4.2mm) hole at the location shown in Figure 1 or Figure 2.
10. Secure the exhaust guard (GM10792 or GM10793) over the exhaust elbow with one of the screws (X-67-133) provided. Using the guard as a template, mark the locations of the remaining mounting holes on the generator set housing. See Figure 1 or Figure 2 for the guard and mounting hole locations.
11. Drill four (8.5/11 RMY) or seven (17/22 RY) 0.165 in. (4.2 mm) holes at the positions marked in the previous step.
12. Secure the exhaust guard using the screws (X-67-133) provided.
13. Check that the generator set master switch is in the OFF position.
14. Reconnect the generator set engine starting battery, negative (-) lead last.
15. Reconnect the power to the battery charger, if equipped.
16. Follow the instructions in the generator set's Operation Manual to return the unit to operation.

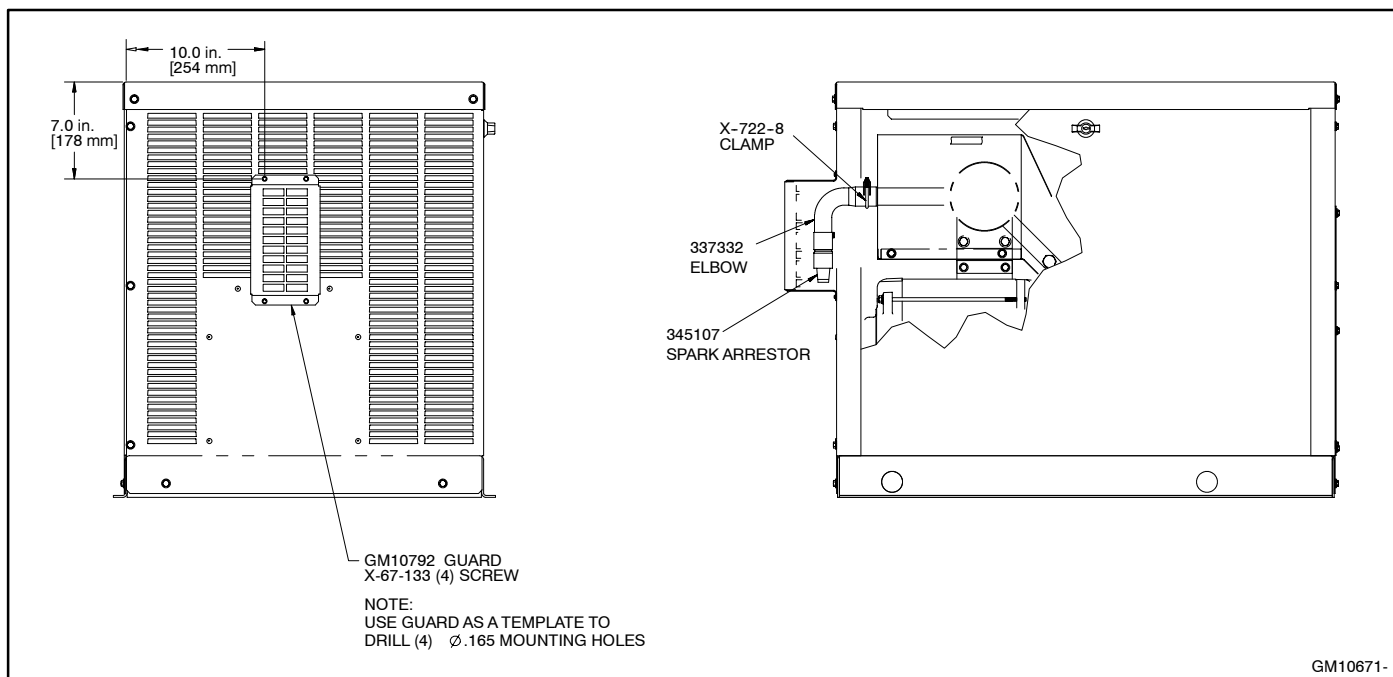


Figure 1 Installed Exhaust Guard and Elbow Kit GM10671-KP1, 8.5/11RMY Generator Sets

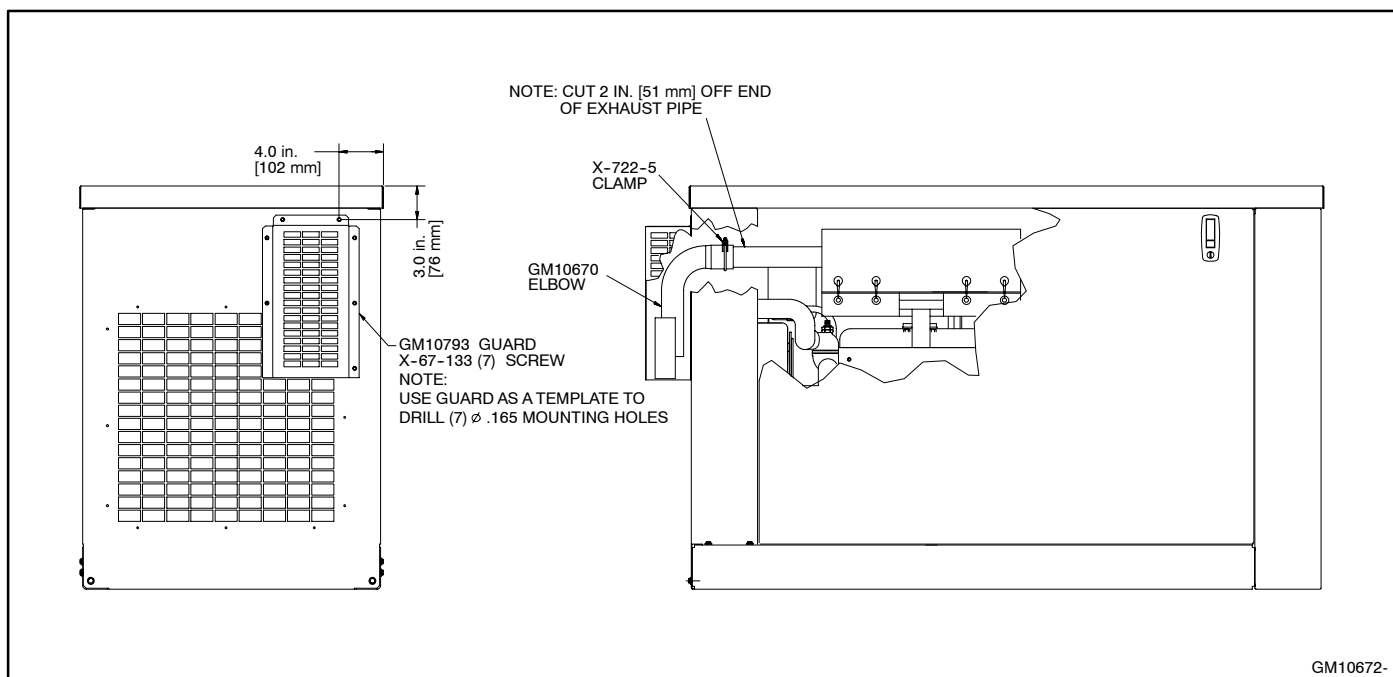


Figure 2 Installed Exhaust Guard and Elbow Kit GM10672-KP1, 17/22RY Generator Sets

Parts Lists

Exhaust Guard and Elbow Kit, 8.5/11RMY

Parts List		
Kit: GM10671-KP1		
Qty.	Description	Part Number
1	Clamp, muffler, 1.37 in.	X-722-8
4	Screw, Phillips hex crimpite	X-67-133
1	Literature	TT-1255
1	Guard, exhaust	GM10792
1	Arrester, spark	345107
1	Fitting, elbow, exhaust	337332

Exhaust Guard and Elbow Kit, 17/22RY

Parts List		
Kit: GM10672-KP1		
Qty.	Description	Part Number
1	Clamp, muffler, 2.12 in.	X-722-5
7	Screw, hex washer, thread-forming	X-67-133
1	Literature	TT-1255
1	Guard, exhaust	GM10793
1	Elbow, exhaust tube	GM10670