

Air Duct Kits for MWM Engines

Model	Engine	Kit No.	Figure
5 kW	D-302-1	PA-250596	1
10 kW	D-302-2	PA-250589	2
15 kW	D-327-1	PA-250590	3

The Air Duct Kits are designed with a side outlet arrangement and are efficient in maintaining consistent operating temperatures in confined areas. Additional ductwork is required to carry the heated air from the engine ductwork to an outside area.

Follow the set of general instructions and use the appropriate figure for mounting information.

WARNING

UNITS STARTS WITHOUT NOTICE! Units with Automatic Transfer Switches start automatically. Turn generator main switch on controller to OFF position, and remove battery cables (remove negative lead first and reconnect it last) to disable generator set before working on any equipment connected to generator.

INSTALLATION

- Place controller main switch to the OFF position. Disconnect battery, negative lead first.
- Remove two nuts from engine manifold, see appropriate figure.
- 5 kW Model
 - Place air duct 250534 over manifold studs and attach nuts. Do not tighten.
 - Install side support 250533 to air vent using three drill screws. Do not tighten.
 - Install top support 250532 to air vent using two drill screws. Do not tighten.
 - 10 kW Model
 - Place air duct 250537 over manifold studs and attach nuts. Do not tighten.
 - Install air duct top 250536 to top and right side of air vent using four drill screws. Do not tighten.
 - Install bracket 250535 to top of air vent using two drill screws. Do not tighten.
 - 15 kW Model
 - While holding air duct 250540 in position, place right-side air duct 250539 over exhaust manifold

stud. Attach manifold nut and two drill screws. Do not tighten.

- Install left-side air duct 250538 over intake manifold stud. Attach manifold nut and five drill screws. Do not tighten.

- After making sure flange surface is square and flush, final tighten drill screws and then manifold nuts.

NOTE

Drill screws will strip threads if overtightened!

- Install custom ductwork connecting engine duct and an outside vent.

NOTE

A section of the ductwork between the engine duct and outside vent must be flexible (usually canvas) to keep vibration noise to a minimum.

NOTE

When ductwork is used, keep the number of bends to a minimum and wherever possible make gradual, sweeping bends.

- Check that controller main switch is in the OFF position. Reconnect battery, negative lead last.

PART LISTING

PA-250589 (10 kW)

Description	Qty.	Part No.
Air Duct	1	250537
Bracket	1	250535
Screw, Drill	6	X-794-2
Top, Air Duct	1	250536

PA-250590 (15 kW)

Description	Qty.	Part No.
Air Duct	1	250540
Air Duct, L.S.	1	250538
Air Duct, R.S.	1	250539
Screw, Drill	7	X-794-2

PA-250596 (5 kW)

Description	Qty.	Part No.
Air Duct	1	250534
Screw, Drill	5	X-794-2
Support, Side	1	250533
Support, Top	1	250532

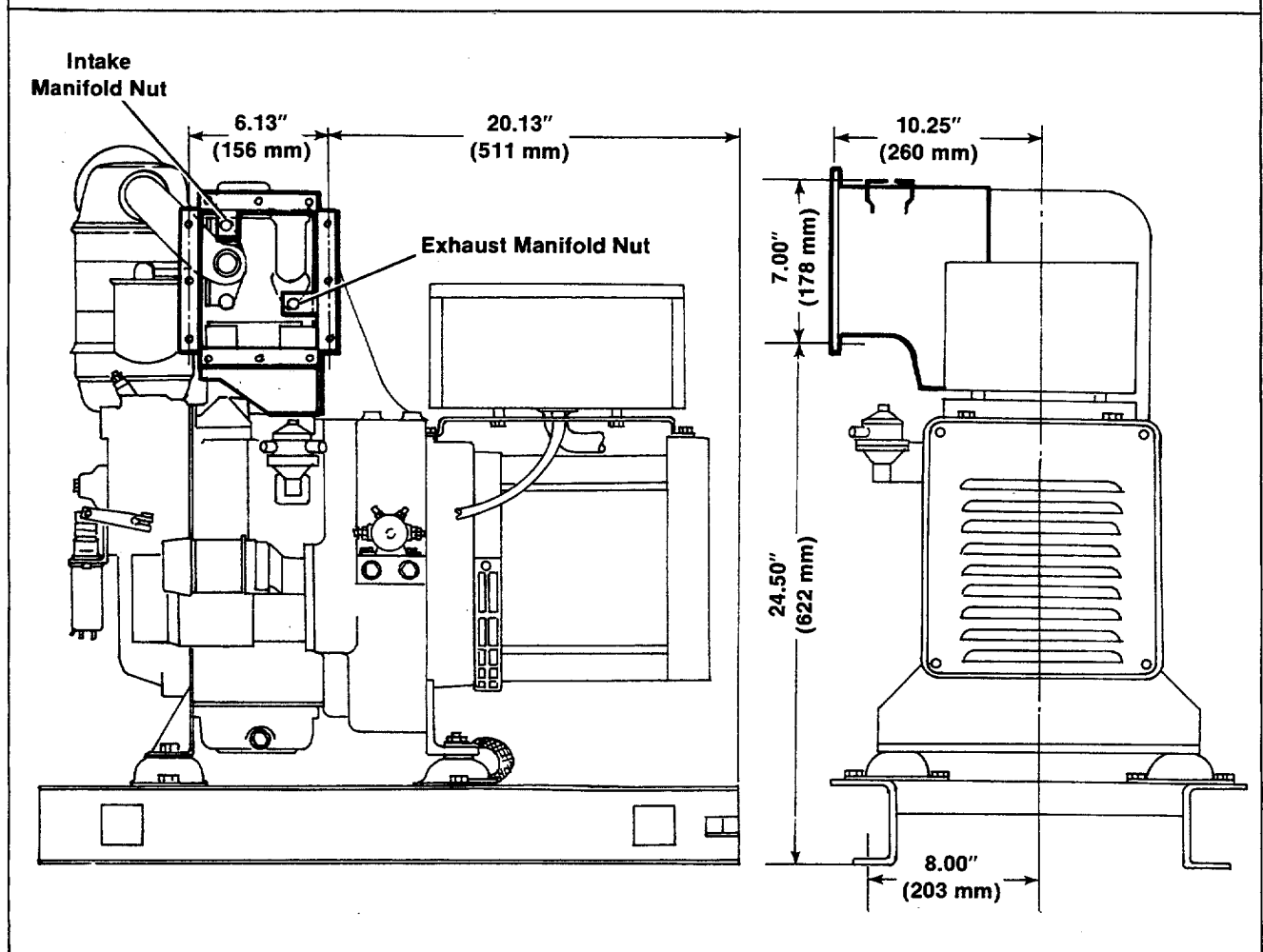
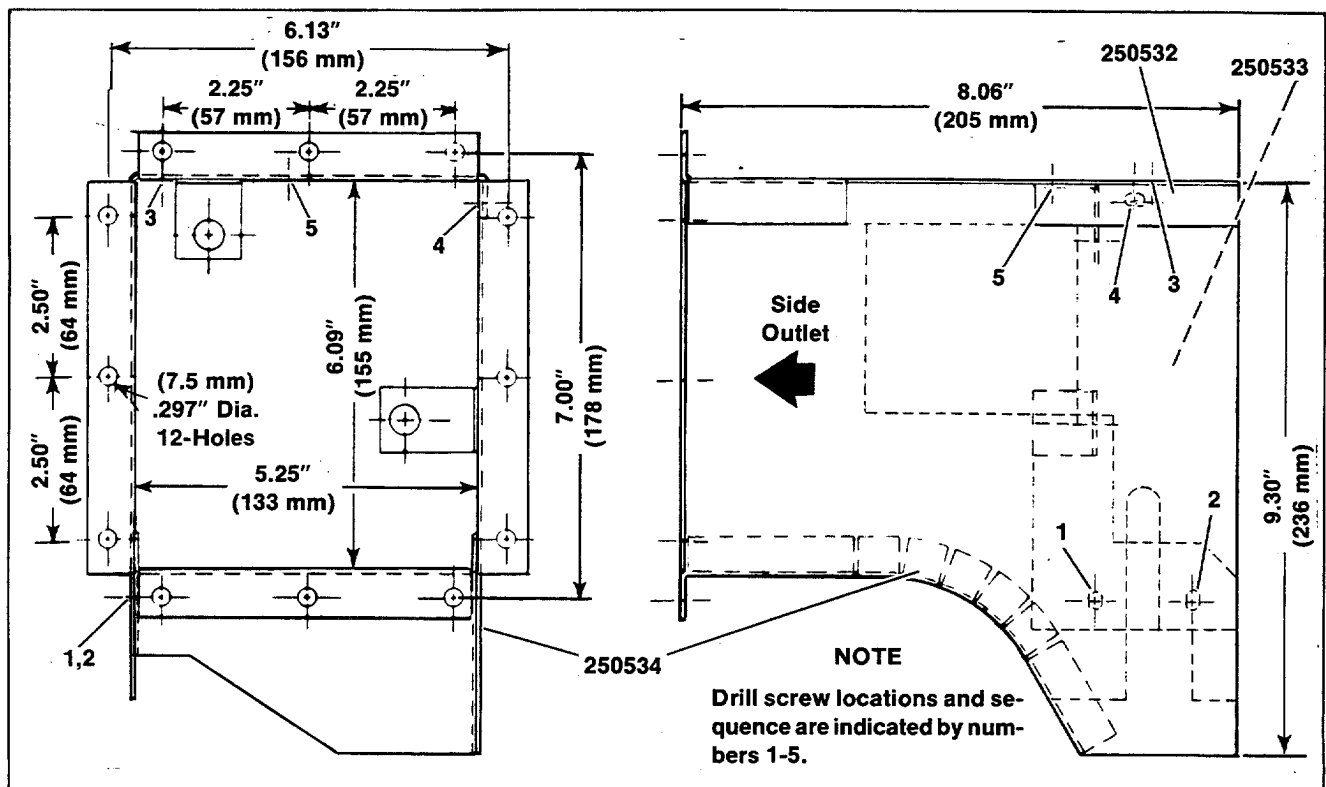


Figure 1.5 kW Air Duct Installation

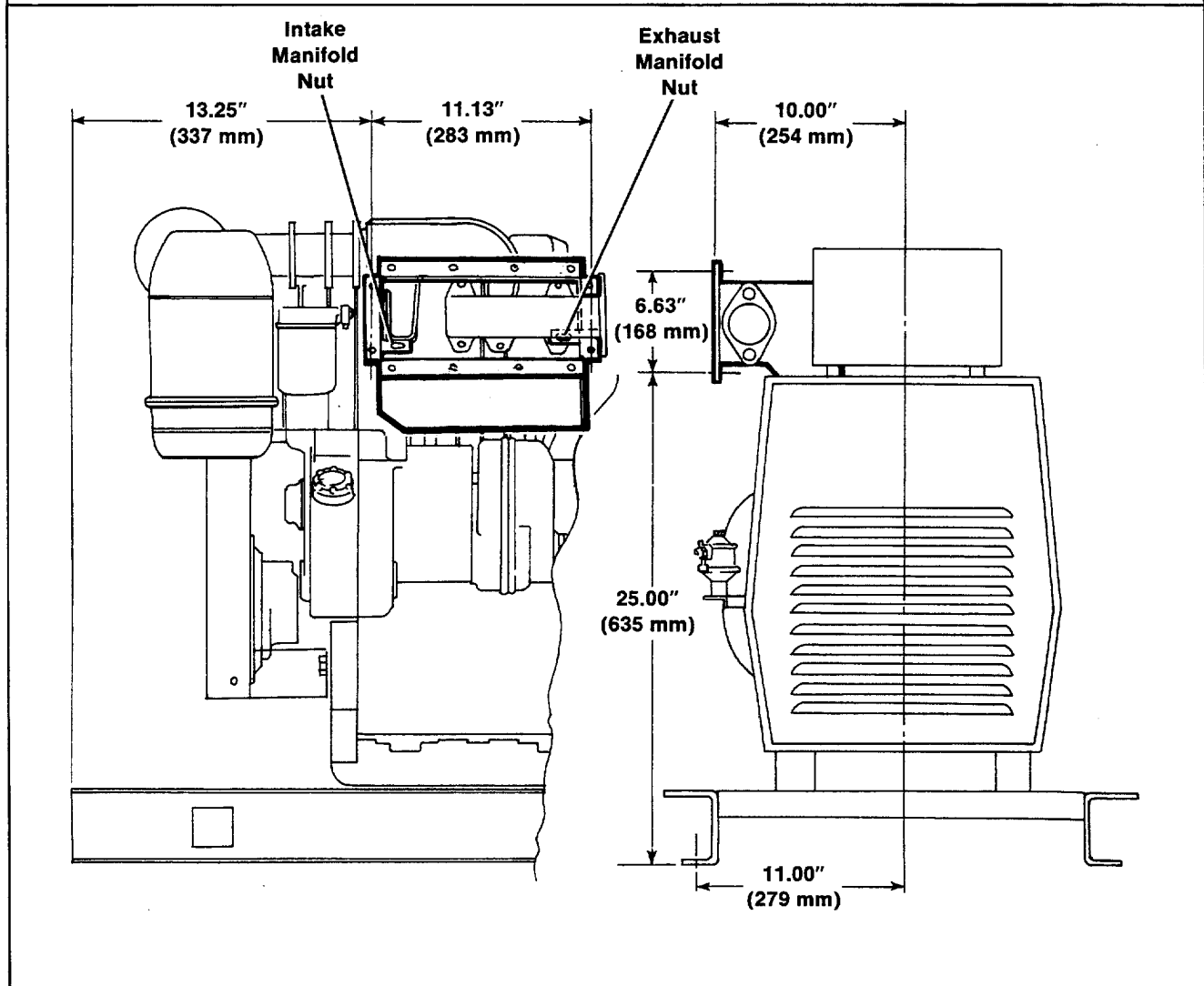
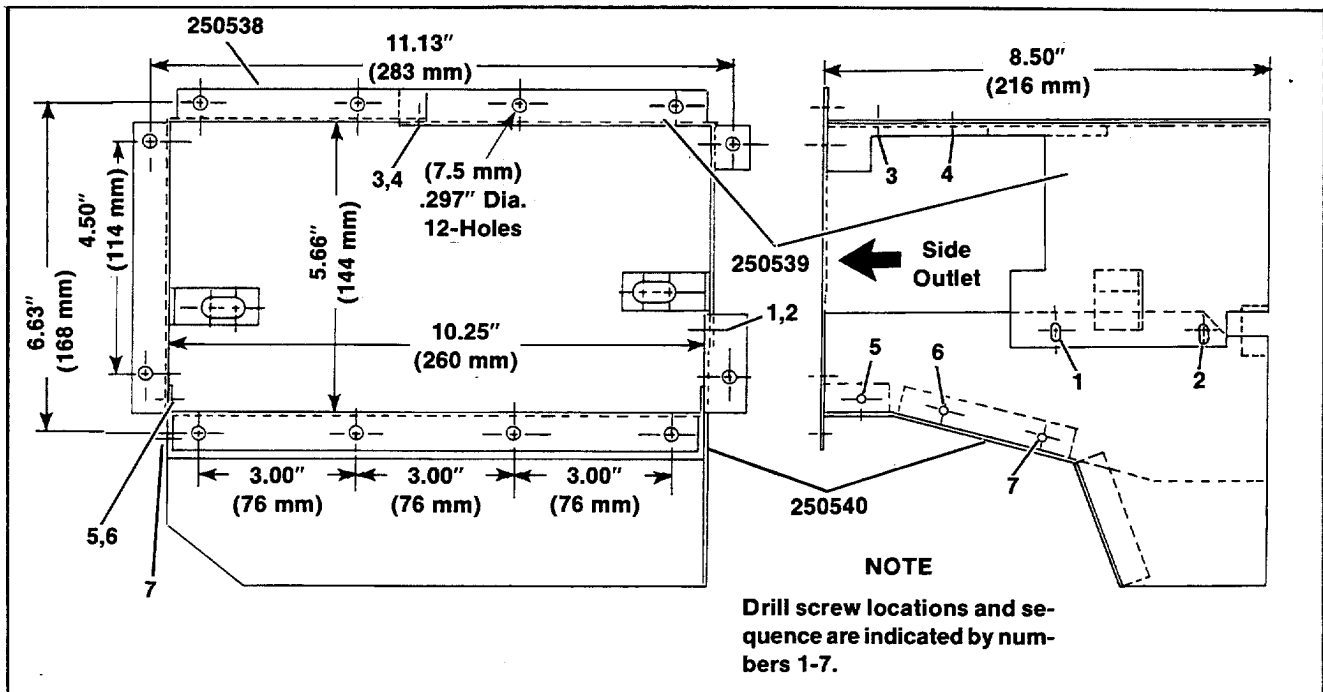


Figure 3. 15 kW Air Duct Installation