
INSTALLATION INSTRUCTIONS

Original Issue Date: 11/89

Model: 200-350 kW

Market: Industrial

Subject: Tail Pipe Kits PA-274463, PA-274463-SD, PA-274465, and PA-274465

The tail pipe kit is designed for installation on 200-350 kW industrial generator sets with weather housings. Observe the following safety precautions while installing the kit.



Accidental starting.
Can cause severe injury or death.

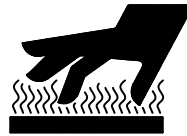
Disconnect battery cables before working on generator set (negative lead first and reconnect it last).

Accidental starting can cause severe injury or death. Turn generator set master switch to OFF position, disconnect power to battery charger, and remove battery cables (remove negative lead first and reconnect it last) to disable generator set before working on any equipment connected to generator set. The generator set can be started by automatic transfer switch or remote start/stop switch unless these precautions are followed.

Carbon monoxide can cause severe nausea, fainting, or death. In addition to routine inspection of the exhaust system, install a carbon monoxide detector. Consult your coach builder or dealer for installation of approved detectors. Inspect your detector before each generator set use.

Carbon monoxide can cause severe nausea, fainting, or death. Never operate the generator set inside a building unless the exhaust gas is piped safely outside. Never operate in any area where exhaust gas could accumulate and seep back inside an occupied building. Avoid breathing exhaust fumes when working on or near the generator set. Carbon monoxide is particularly dangerous because it is an odorless, colorless, tasteless, nonirritating gas. Be aware that it can cause death if inhaled for even a short time.

⚠ WARNING



Hot engine and exhaust system.
Can cause severe injury or death.

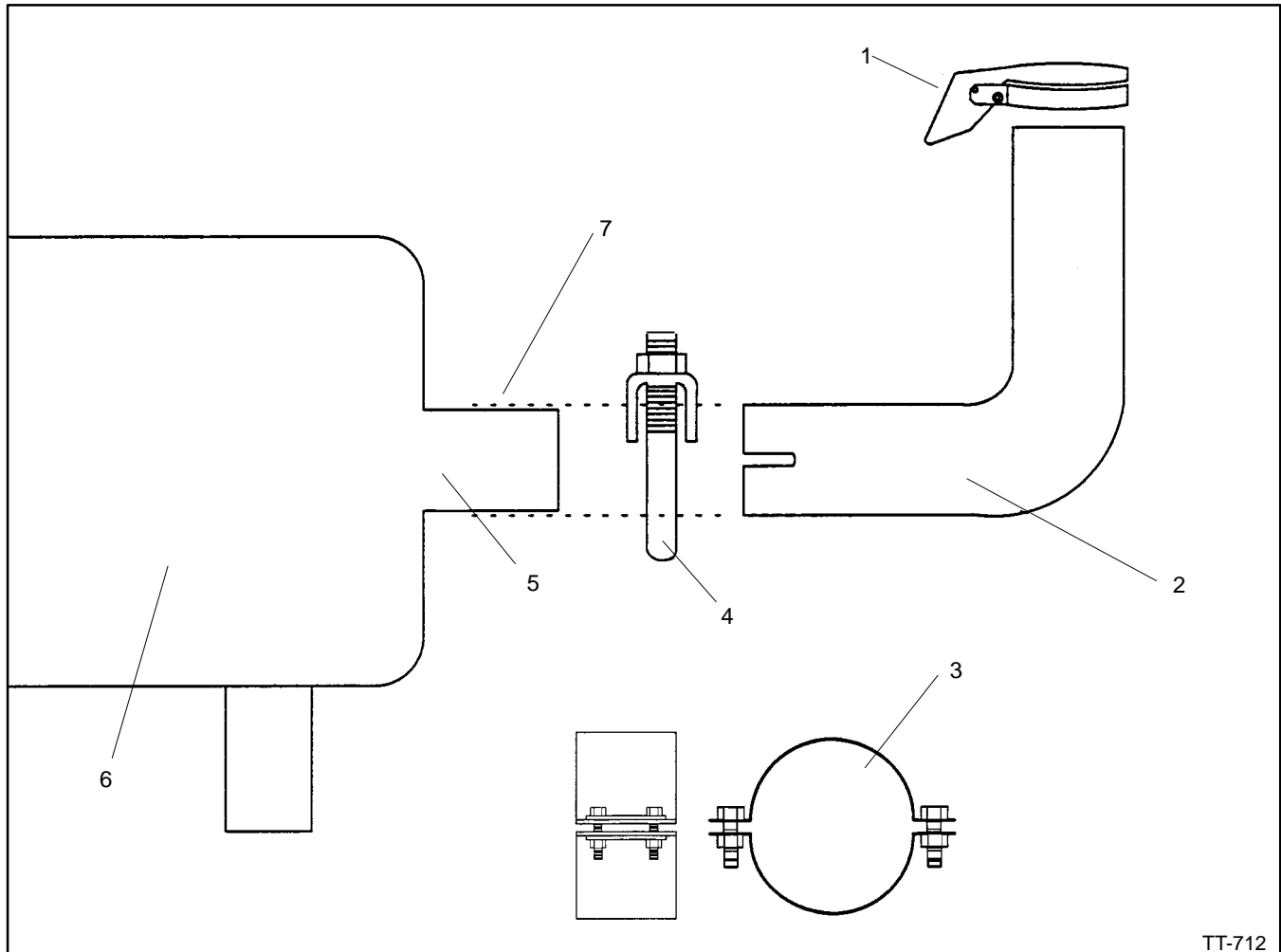
Do not work on generator set until it is allowed to cool.

Hot parts can cause severe injury or death. Do not touch hot engine parts. An engine gets hot while running and exhaust system components get extremely hot.

Installation

1. Turn the generator controller master switch to the OFF position. Disconnect generator set engine starting battery, negative (–) lead first.
2. Position rain cap (274650 or 274651) on nonslotted end of exhaust pipe (274462 or 274464). Secure rain cap to exhaust pipe by gently tapping rain cap with a rubber mallet.
3. Slide slotted end of exhaust pipe over silencer exhaust outlet. Slotted end of exhaust pipe must overlap exhaust outlet a minimum of 2 in. (51 mm).

4. If installing kit PA-274463 or PA-274463-SD, secure exhaust pipe to exhaust outlet with saddle clamp (X-722-6). Use double-band clamps (274649) to secure exhaust pipe to outlet if installing kit PA-274465 or PA-274465-SD. See Figure 1.
5. Reconnect generator set engine starting battery, negative (-) lead last.
6. Move generator set controller master switch to RUN or AUTO to start generator set.
7. With generator set running, inspect outlet/tail pipe connection for exhaust leaks. Verify that rain cap opens freely. Stop generator set.



1. Rain Cap (274650 or 274651)
2. Exhaust Pipe (274462 or 274464)
3. Muffler Clamp (274649) Used in
PA-274465 only PA-274465-SD
4. Muffler Clamp (X-722-6)
5. Exhaust Outlet
6. Silencer
7. Note: Slotted end of exhaust pipe must overlap exhaust outlet a minimum of 2 in. (51 mm).

Figure 1. Tail Pipe Kit Installation

Parts List			
Qty.	Description	PA-274463 PA-274463-SD	PA-274465 PA-274465-SD
1	Cap, rain	274650	274651
1	Clamp, muffler	X-722-6	
2	Clamp, muffler		274649
1	Pipe, exhaust	274462	274464