

KOHLER® POWER SYSTEMS



INSTALLATION INSTRUCTIONS

Fuel Tank Kit 239787 3.5 & 5kW PowerPro™ Generators

The fuel tank kit is designed as a replacement part for 3.5 and 5kW PowerPro™ generators. Observe the following safety precautions when installing the kit.

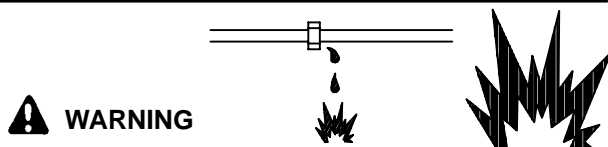


Accidental starting.

Can cause severe injury or death.

Disconnect battery cables before working on generator set (negative lead first and reconnect it last).

Accidental starting can cause severe injury or death. Disconnect the spark plug wire(s), remove battery cables (remove negative lead first and reconnect it last) and disconnect power to battery charger (if equipped) to disable generator set before working on any equipment connected to generator.



Explosive fuel vapors.

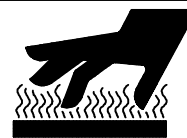
Can cause severe injury or death.

Use extreme care when handling, storing, and using fuels.

Explosive fuel vapors can cause severe injury or death. All fuels are highly explosive in a vapor state. Use extreme care when handling, storing, and using fuels. Store fuel in a well-ventilated area away from spark-producing equipment and out of the reach of children. Never add fuel to the tank while the engine is running since spilled fuel may ignite on contact with hot parts or from ignition spark. Do not smoke or permit flame or spark to occur near potential sources of spilled fuel or fuel vapors. Keep fuel lines and connections tight and in good condition—don't replace flexible fuel lines with rigid lines. Flexible sections are used to avoid breakage due to vibration. Should any fuel leakage, fuel accumulation, or electrical sparks be noted, **DO NOT OPERATE GENERATOR SET.** Have systems repaired before resuming generator operation.

Explosive fuel vapors can cause severe injury or death. Spilled fuel can cause an explosion. Use a container to catch fuel when draining fuel system. Wipe up all spilled fuel after draining system.

WARNING



Hot engine and exhaust system. Can cause severe injury or death.

Do not work on generator set until unit is allowed to cool.

Hot parts can cause severe injury or death. Do not touch hot engine parts. An engine gets hot while running and exhaust system components get extremely hot.

INSTALLATION

1. Move generator ON/OFF switch to OFF position, allow generator set to cool.
2. Disconnect battery (if used), negative lead first. Disconnect spark plug wire.
3. With a container in position to catch drained fuel, disconnect fuel line at fuel tank. Disconnect fuel line at engine. Wipe up any spilled fuel with rag. Dispose of rag in a proper container.
4. Remove straps securing fuel tank to frame. (Retain mounting straps and nuts for installation of new fuel tank.) Remove fuel tank.
5. The design of the replacement fuel tank requires that the mounting strap nearest to the tank outlet be repositioned. To install the strap in new location, drill two 0.297-in. (7.5 mm) diameter holes in the mounting plate at the locations shown in Figure 1.
6. Drill one 0.297-in. (7.5 mm) hole in the mounting strap as shown.
7. Attach strap to mounting plate with 1/4-20 x 0.625-in. hex screw (X-465-2) and whiz nut (X-6210-2).
8. Assemble the fuel tank (239686) and heat shield (239687) with two 0.187 x 0.450-in. pop rivets (X-781-10).
9. Secure new fuel tank with existing straps and hardware.

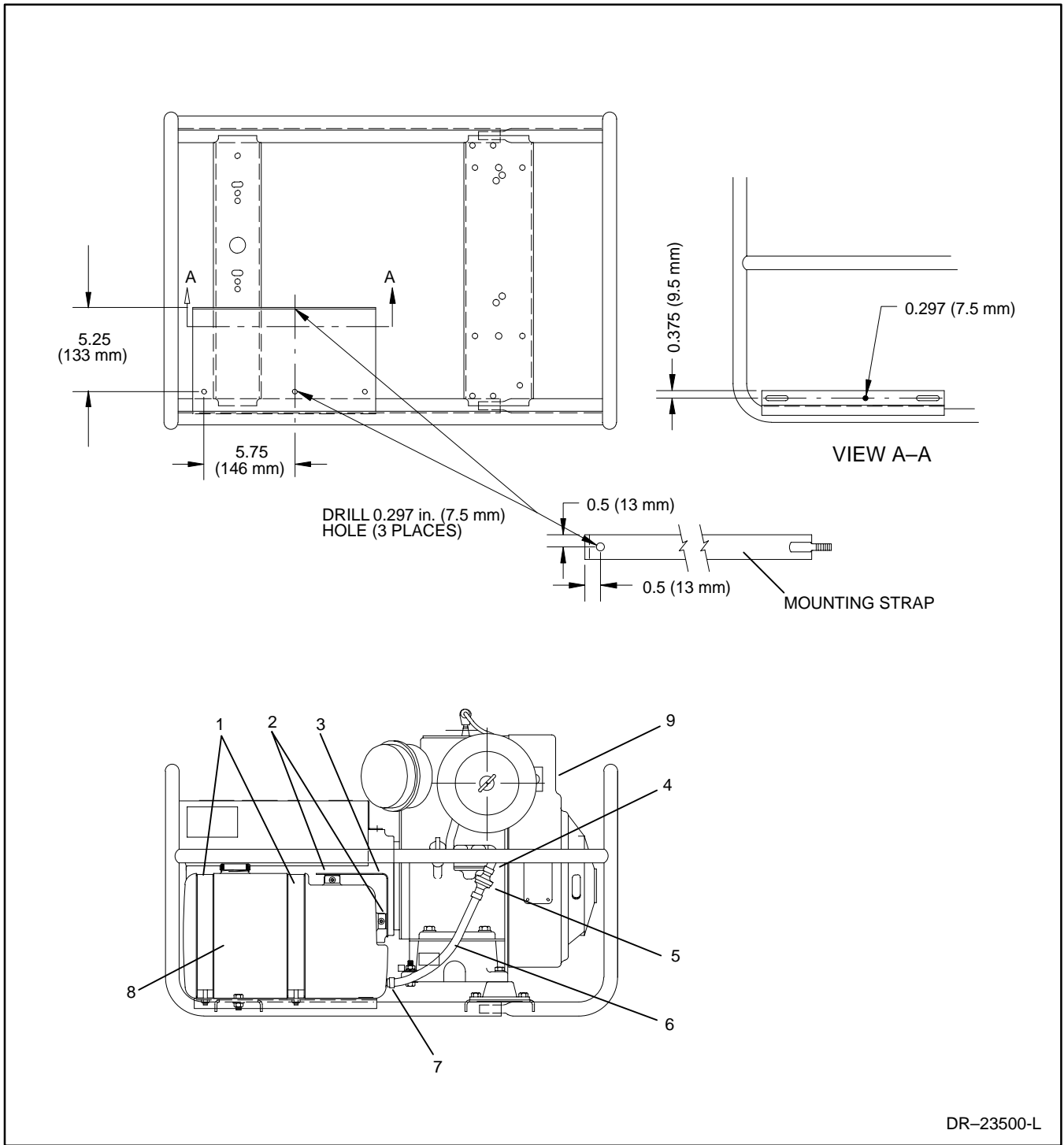
NOTE

The fuel filter allows fuel flow in one direction only. If fuel filter is installed in the incorrect orientation, the generator set will not run.

10. Assemble the fuel line assembly. Attach the 0.25-in. ID x 3.50-in. flexible fuel line (X-386-46) to the output connection of the fuel filter (238653). Attach 0.25-in. ID x 9.00-in. flexible fuel line (X-386-14) to intake connection of the fuel filter. Secure both fuel lines with spring hose clamps (X-309-14).
11. Slide spring hose clamp (X-309-14) over each end of fuel lines. Connect long hose to fuel tank and short hose to engine fuel inlet. Secure fuel lines with clamps.
12. Fill fuel tank. Wipe up all spilled fuel with rag before starting generator set. Dispose of rag in a proper container.
13. Reconnect the spark plug wire and starting battery (if used), negative lead last.
14. Start generator set and inspect for leakage. If leakage is detected, stop generator set. Correct condition before resuming operation.

Parts List

Kit PA-239787		
Qty.	Description	Part No.
4	Clamp, spring hose 0.462-0.599 x 0.312 in.	X-309-14
1	Line, flexible fuel, 0.25 in. ID x 9.00 in.	X-386-14
1	Line, flexible fuel, 0.25 in. ID x 3.50 in.	X-386-46
1	Screw, hex, 1/4-20 x 0.625 in.	X-465-2
2	Rivet, pop, 0.187 x 0.450 in.	X-781-10
1	Nut, whiz, 1/4-20	X-6210-2
1	Filter, fuel	238653
1	Tank, fuel	239686
1	Shield, heat	239687



DR-23500-L

- | | |
|-------------------------|--------------------------|
| 1. Mounting Straps | 6. Fuel Line (X-386-14) |
| 2. Pop Rivet (X-781-10) | 7. Hose Clamp (X-309-14) |
| 3. Heat Shield (239687) | 8. Fuel Tank (239686) |
| 4. Fuel Line (X-386-46) | 9. ON/OFF Switch |
| 5. Fuel Filter (238653) | |

Figure 1. Fuel Tank Installation