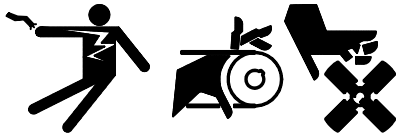

INSTALLATION INSTRUCTIONS

Electric Fuel Pump Service Kit 256406 15kW-VG4D Single-Phase and Three-Phase Standby Generator Sets

The electric fuel pump kit provides installation of an electric fuel pump in place of the existing mechanical fuel pump.

WARNING



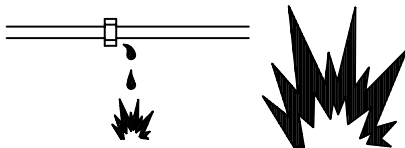
Accidental starting.

Can cause severe injury or death.

Disconnect battery cables before working on generator set (negative lead first and reconnect it last).

Accidental starting can cause severe injury or death. Disconnect battery cables (remove negative lead first and reconnect it last) to disable generator set before working on any equipment connected to generator. The generator set can be started by remote start/stop switch unless this precaution is followed.

WARNING



Explosive fuel vapors.

Can cause severe injury or death.

Use extreme care when handling, storing, and using fuels.

Explosive fuel vapors can cause severe injury or death. All fuels are highly explosive in a vapor state. Use extreme care when handling, storing, and using fuels. Store fuel in a well-ventilated area away from spark-producing equipment and out of the reach of children. Never add fuel to the tank while the engine is running since spilled fuel may ignite on contact with hot parts or from ignition spark. Do not smoke or permit flame or spark to occur near potential sources of spilled fuel or fuel vapors. Keep fuel lines and connections tight

and in good condition—don't replace flexible fuel lines with rigid lines. Flexible sections are used to avoid breakage due to vibration. Should any fuel leakage, fuel accumulation, or electrical sparks be noted, **DO NOT OPERATE GENERATOR SET.** Have systems repaired before resuming generator operation.

WARNING

Spilled fuel can ignite on contact with hot engine parts. Use a container to catch fuel when draining fuel system. Wipe up all spilled fuel after draining system. Ensure that engine and exhaust system have completely cooled before working on a fuel system.

INSTALLATION

1. Disconnect battery (negative lead first) to disable generator set.
2. Disconnect existing fuel line from fuel pump and from elbow at carburetor. Do not remove elbow from carburetor. Discard fuel line.
3. Remove carburetor. Install three gaskets (258024) between carburetor and intake manifold. Reinstall carburetor. See Figure 1.
4. Remove existing mechanical fuel pump and replace with cover plate (256407) and gasket (256282). Use screws (X-465-6) and washers (X-25-40). Apply thread sealant to thermostat and mount thermostat in either hole.
5. Install mounting bracket (256404) on skid rail with two screws (X-125-3), washers (X-25-85), and nuts (X-6210-7).
6. Install electric fuel pump (249862) on mounting bracket with two bolts (X-465-6), washers (X-25-40), and nuts (X-22-12). Connect fuel pump black lead (ground) to skid rail. Replace existing terminal with (X-251-40) and two washers (X-22-16).

7. Install fuel filter mounting bracket (256405) on cylinder head cover. Remove existing screw and replace with screw (X-465-16) and washer (X-25-40). Install fuel filter (256399) on bracket with clamp (X-672-21), bolt (X-125-23) and washer (X-25-85).

NOTE

Apply thread sealant to all connections.

8. Install elbows (267428) on each side of fuel pump. Install hose connector (X-380-5) on outlet side (top) of fuel pump.
9. Place a hose clamp (X-426-9) on each end of fuel line (X-386-32). Install fuel line between fuel pump and fuel filter. Locate hose clamps 1/4 inch (6.3 mm) from hose ends and tighten clamps.
10. Connect threaded end of fuel line (256403) to elbow on carburetor. Place hose clamp (X-426-9) on loose end of fuel line. Connect fuel line to outlet of fuel filter. Locate clamp 1/4 inch (6.3 mm) from hose end and tighten clamp.

11. On single-phase units install toggle switch mounting bracket (256402) on controller bracket with screws (X-51-15), washers (X- 25-48), and nuts (X-6210-4). See Figure 2.
12. Install toggle switch (241911) with lock ring (151511) as shown in Figure 2. Install nameplates (256400 and 256401) with pop rivets (X-793-3). Place GASOLINE nameplate on top and GAS nameplate on the bottom.
13. See Figure 3 for wiring diagram. Connect lead 15 to toggle switch. Connect lead 70G to gas valve and lead 70F to fuel pump.
14. Connect battery cables, negative cable last.
15. Run generator set and check fuel system for leaks. Test operation of GAS/GASOLINE toggle switch and electric fuel pump. STOP generator set.

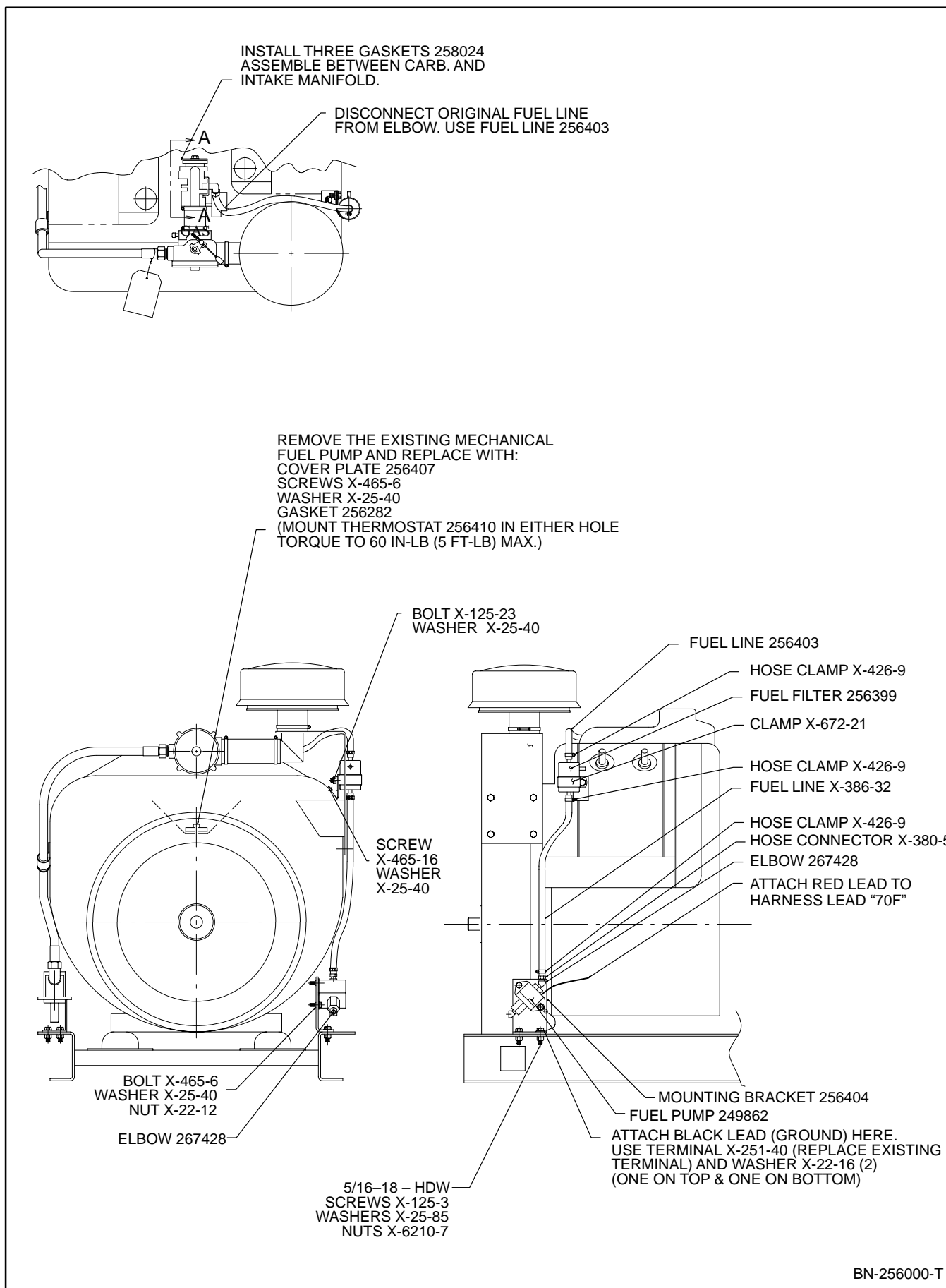
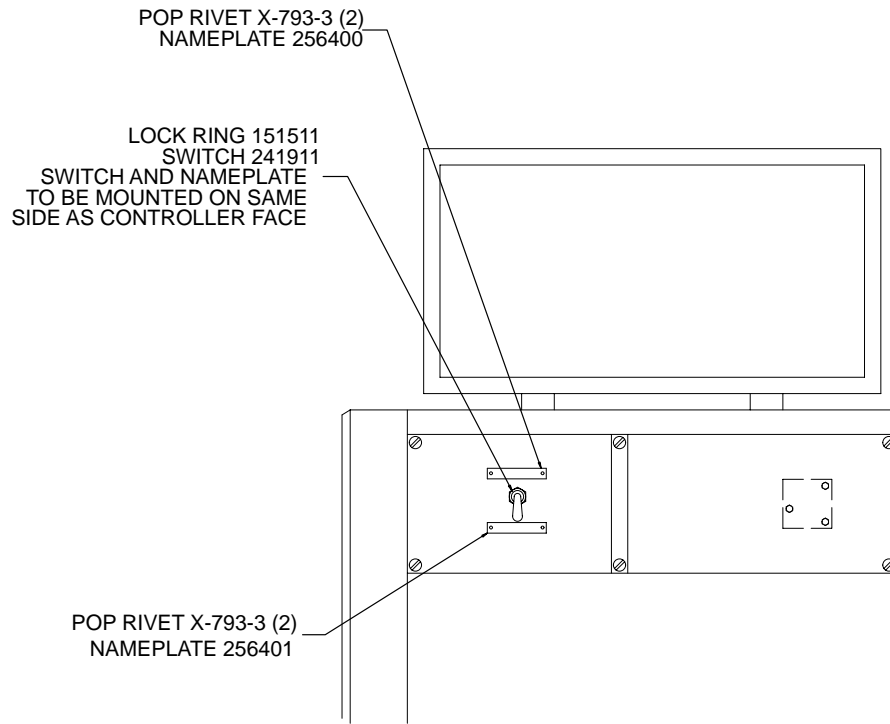
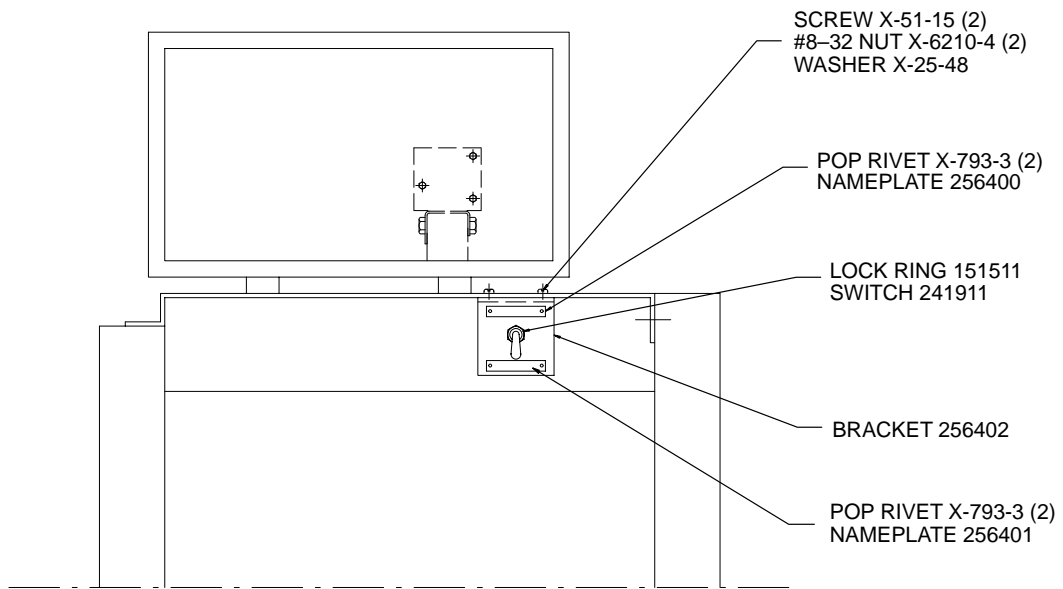


Figure 1. Electric Fuel Pump Installation



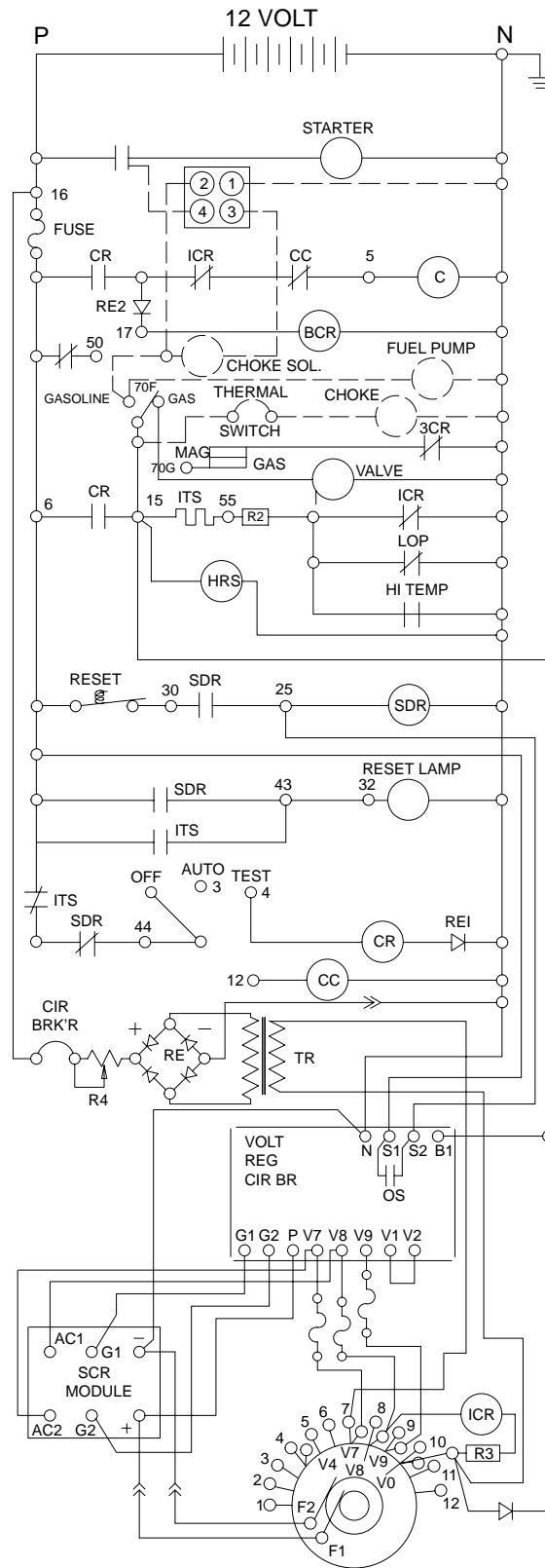
THREE-PHASE MODEL



SINGLE-PHASE MODEL

BN-256000-T

Figure 2. Toggle Switch Installation



TT-894

Figure 3. Wiring Diagram

Parts List		
Qty.	Description	Part Number
1	Lead	T70F-1854-5704
1	Lead	T70G-1839-5704
1	Screw, hex, GR5, 5/16-18 x 0.75 in.	X-125-3
2	Screw, hex, GR5, 5/16-18 x 0.62 in.	X-125-23
2	Washer, shakeproof	X-22-12
2	Washer, shakeproof	X-22-16
4	Washer, plain, 1/4 in.	X-25-40
2	Washer, plain, #8	X-25-48
3	Washer, plain, 5/16 in.	X-25-85
1	Connector, hose	X-380-5
1	Terminal	X-251-40
1	Line, flex fuel	X-386-32
3	Clamp, hose	X-426-9
1	Terminal	X-431-25
4	Screw, hex, GR5, 1/4-20 x 0.50 in.	X-465-6
1	Screw, hex, GR5, 1/4-20 x 0.75 in.	X-465-16
2	Screw, R. H. M., 8-32 x 0.500 in.	X-51-15
2	Nut, whiz, 8-32	X-6210-4
2	Nut, whiz, 5/16-18	X-6210-7
1	Clamp	X-672-21
4	Rivet, pop	X-793-3
1	Ring, lock	151511
1	Switch, toggle	241911
1	Pump, fuel	249862
1	Gasket	256282
1	Filter, fuel	256399
1	Nameplate	256400
1	Nameplate	256401
1	Bracket, switch	256402
1	Line, flex fuel	256403
1	Bracket	256404
1	Bracket	256405
1	Plate, cover	256407
3	Gasket	258024
2	Elbow, 45° street	267428