

INSTALLATION INSTRUCTIONS

Lifting Eye Kit PA-256912 & PA-256913 10/12 kW Standby Generator Sets

The lifting eye kit provides a lifting point to allow safe handling of the generator set with weather housing when movement is required. There are two variations of the kit, PA-256913 (single-phase generator sets) and PA-256912 (three-phase generator sets).

NOTE

Be sure lifting equipment is properly suited for weight of the generator set.

⚠ CAUTION

<p>Improper lift can cause personal injury and equipment damage.</p> <p>Use lifting eye for vertical lifts only. Do not use to drag unit.</p>



Accidental starting. **Can cause severe injury or death.**

Disconnect battery cables before working on generator set (negative lead first and reconnect it last).

Accidental starting can cause severe injury or death. Turn generator master switch to OFF position, disconnect power to battery charger, and remove battery cables (remove negative lead first and reconnect it last) to disable generator set before working on any equipment connected to generator. The generator set can be started by automatic transfer switch or remote start/stop switch unless these precautions are followed.

⚠ WARNING



Hot engine and exhaust system. **Can cause severe injury or death.**

Do not work on generator set until unit is allowed to cool.

Hot parts can cause severe injury or death. Do not touch hot engine parts. An engine gets hot while running and exhaust system components get extremely hot.

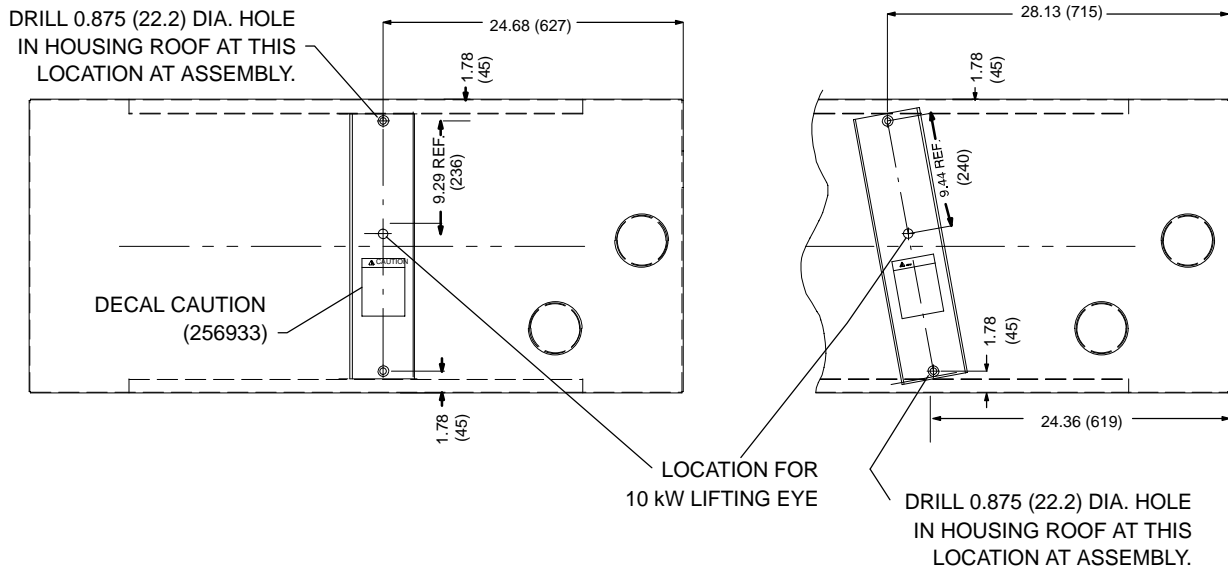
INSTALLATION

1. Move generator master switch to OFF position. Disconnect battery, negative lead first.
2. Allow engine to cool before beginning installation.
3. Before lifting kit can be installed, it will be necessary to drill two 0.875-inch (22.2-mm) diameter holes (one each side) in housing roof at locations shown in Figure 1. Hole positions will vary depending on the model of the unit (single-phase or three-phase). Verify position before drilling.

NOTE

Observe all appropriate safety procedures for use of power tools when drilling holes. Remove all burrs and metal chips from the work area before continuing installation procedure.

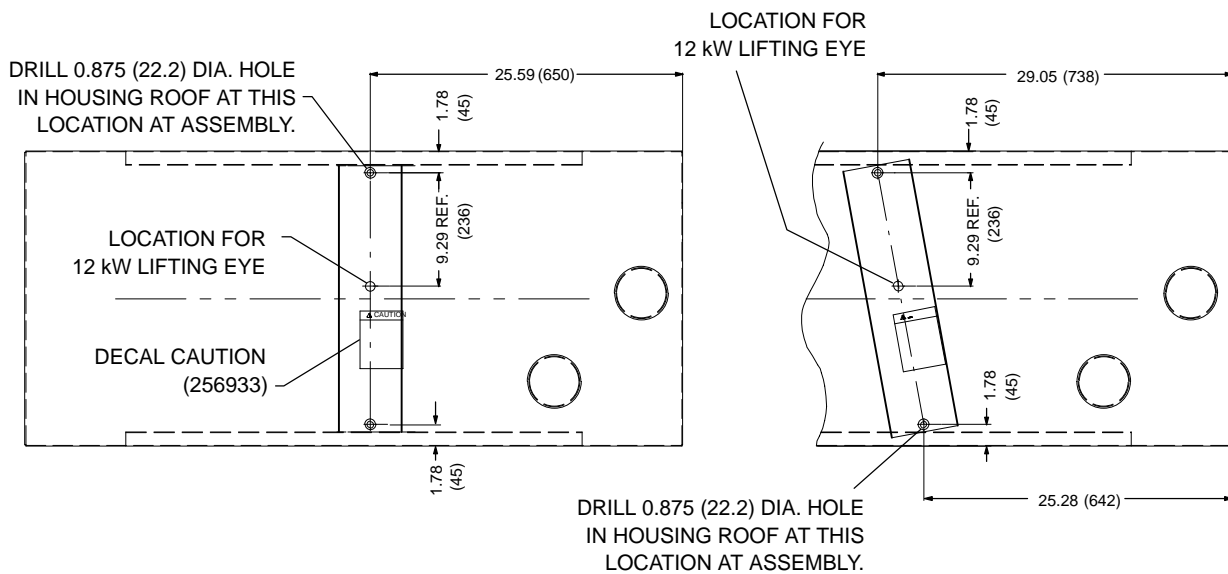
4. Install 1/2 x 13/16-in. grommets (X-284-15) in holes in housing roof as shown in Figure 2.



SINGLE-PHASE LIFTING BRACKET

THREE-PHASE LIFTING BRACKET

10 kW



SINGLE-PHASE LIFTING BRACKET

THREE-PHASE LIFTING BRACKET

12 kW

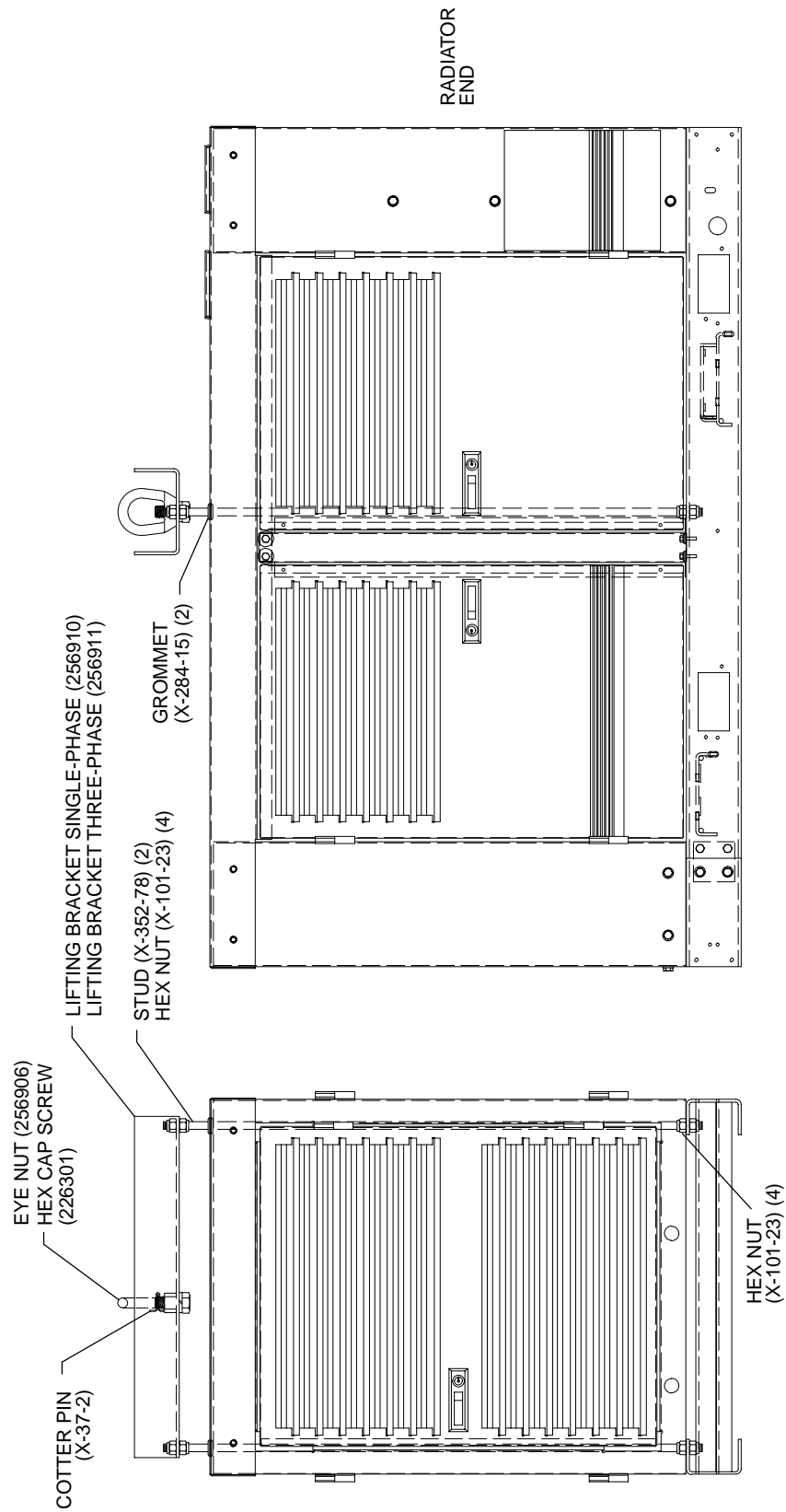
Dimensions in () are millimeter equivalents

GP-255000-

Figure 1. Mounting Hole/Lifting Bracket Locations

5. Open access doors. Slide stud (X-352-78) through grommet in housing roof. Install one 1/2-13 hex nut (X-101-23) on bottom of stud. Advance nut to the end of threaded portion of stud. Insert bottom of stud through existing hole in base, allowing hex nut to rest on base. Install one hex nut (X-101-23) on bottom of stud and tighten against base to 54 ft. lbs. (73 Nm). Repeat for the opposite side stud. Close access doors.
6. Place plain washer (X-25-29) on hex cap screw (226301) and insert through bottom of lifting bracket (256911 for three-phase models, 256910 for single-phase models) as shown. Install eye nut (256906) and tighten. Secure eye nut with cotter pin (X-37-2).
7. Install one 1/2-13 hex nut (X-101-23) on top of each stud (X-352-78); advance nut to end of threaded portion of stud.
8. Install lifting bracket (256911 for three-phase models, 256910 for single-phase models) as shown in Figure 1. Install hex nuts and tighten to 54 ft. lbs. (73 Nm).
9. Apply decal (256933) to lifting bracket as shown.
10. Reconnect battery cables, negative lead last.

Parts List				
Kits: PA-256912 & PA-256913			Unique Parts	
Qty.	Description	Common Parts	PA-256912	PA-256913
8	Nut, 1/2-13 hex	X-101-23		
1	Washer, 0.812 x 1.469 x 0.134 in. plain	X-25-29		
2	Grommet, 1/2 x 13/16 in.	X-284-15		
2	Stud	X-352-78		
1	Pin, cotter	X-37-2		
1	Screw, hex cap	226301		
1	Nut, eye	256906		
1	Bracket, lifting			256910
1	Bracket, lifting		256911	
1	Decal, caution	256933		



SINGLE-PHASE LIFTING EYE KIT PA-256913
THREE-PHASE LIFTING EYE KIT PA-256912

GP-255000-

Figure 2. Lifting Eye Kit