


INSTALLATION INSTRUCTIONS

Lifting Eye Kit PA-256907 18kW Standby Generator Set

The lifting kit provides a lifting point to allow safe handling of the generator set with weather housing when movement is required.

NOTE

Be sure lifting equipment is properly suited for weight of the generator set.

 CAUTION

<p>Improper lift can cause personal injury and equipment damage.</p> <p>Use lifting eye for vertical lifts only. Do not use to drag unit.</p>

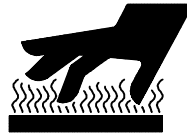
WARNING

**Accidental starting.
Can cause severe injury or death.**

Disconnect battery cables before working on generator set (negative lead first and reconnect it last).

Accidental starting can cause severe injury or death. Turn generator master switch to OFF position, disconnect power to battery charger, and remove battery cables (remove negative lead first and reconnect it last) to disable generator set before working on any equipment connected to generator. The generator set can be started by automatic transfer switch or remote start/stop switch unless these precautions are followed.

WARNING



**Hot engine and exhaust system.
Can cause severe injury or death.**

Do not work on generator set until unit is allowed to cool.

Hot parts can cause severe injury or death. Do not touch hot engine parts. An engine gets hot while running and exhaust system components get extremely hot.

INSTALLATION

1. Move generator master switch to OFF Position.
2. Disconnect battery, negative lead first.
3. Open access doors. Attach the lifting channel (256905) to base with four 1/2-13 x 2.00-in. hardened screws (X-129-21), spacers (X-400-161), and hex nuts (X-101-23) on each side of the weather housing as shown in Figure 1. Torque all fasteners to 54 ft. lbs. (73 Nm). Close access doors.
4. Place plain washer (X-25-29) on special hex screw (226280) and insert screw through bottom of the lifting support (256967). Install eye nut (256906) on screw. Secure eye nut with cotter pin (X-37-2).
5. Attach lifting support to lifting channels with four 1/2-13 x 1.250-in. hardened screws (X-129-18) and hex nuts (X-101-23) as shown. Torque all fasteners to 54 ft. lbs. (73 Nm).
6. With surface clean and dry, attach decal (256933) to lifting support as shown.
7. Reconnect battery cables, negative lead last.

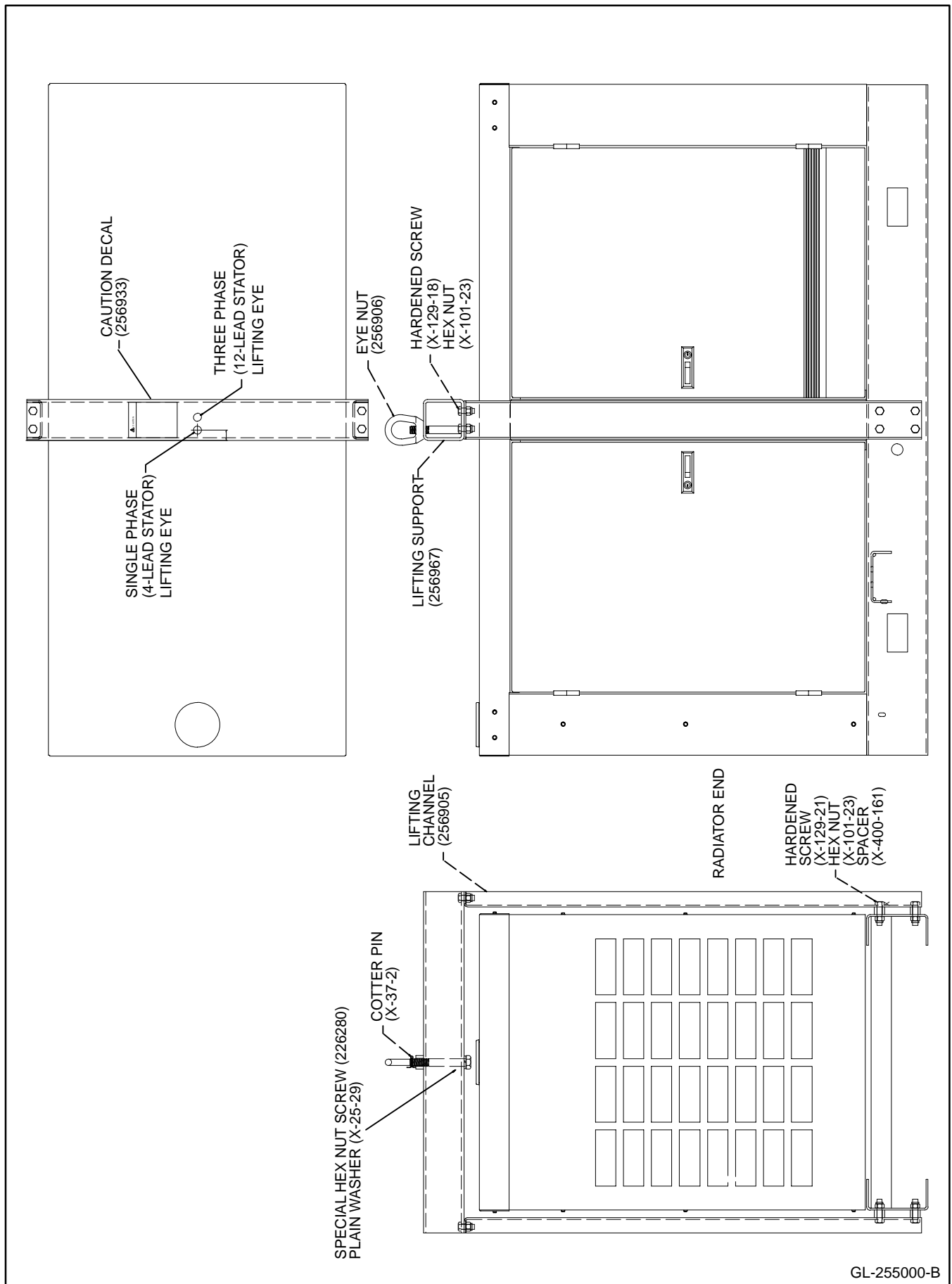


Figure 1. Lifting Eye Kit

Parts List		
Kit PA-256907		
Qty.	Description	Part Number
12	Nut, 1/2-13 hex	X-101-23
4	Screw, 1/2-13 x 1.250 in. hex	X-129-18
8	Screw, 1/2-13 x 2.000 in. hex	X-129-21
1	Washer, 0.812 x 1.469 x 0.134 in. plain	X-25-29
1	Pin, cotter	X-37-2
8	Spacer	X-400-161
1	Screw, special hex	226280
2	Channel, lifting	256905
1	Nut, eye	256906
1	Decal, caution	256933
1	Support, lifting	256967