

SERVICE BULLETIN

Original Issue Date: 3/02
Model: 20-300 kW
Market: Industrial and Marine Generator Sets
Subject: Troubleshooting Flowchart for No/High Output Voltage

Substitute the attached flowcharts for the flowcharts found on pages 7-2 and 7-3 of TP-5353 8/94c, 20-300 kW Industrial Generator Set Service Manual and pages 58 and 59 of TP-5737 5/01, 40-150 kW Marine Generator Set Service Manual.

Use this service bulletin in conjunction with the Service Manual. Read and follow the Safety Precautions and Instructions found in the Service Manual.

| | | | | | | | |
|--------------|-----------------|---------------|---------------|------------------|------------------|------------------|----------------|
| Routing | Service Manager | Sales Manager | Parts Manager | Technician No. 1 | Technician No. 2 | Technician No. 3 | Return This to |
| Initial Here | | | | | | | |

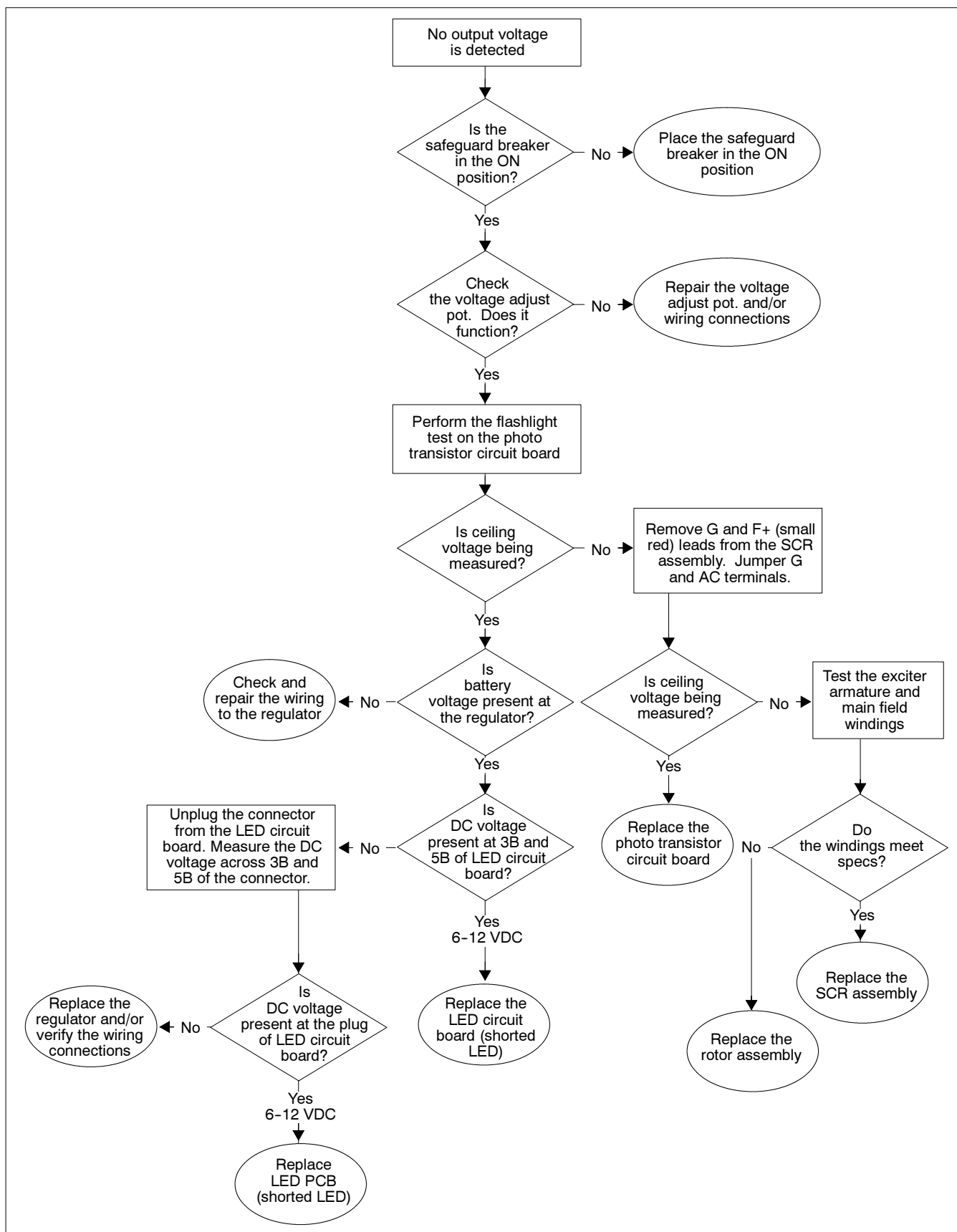


Figure 1 Troubleshooting Flowchart for No Output Voltage

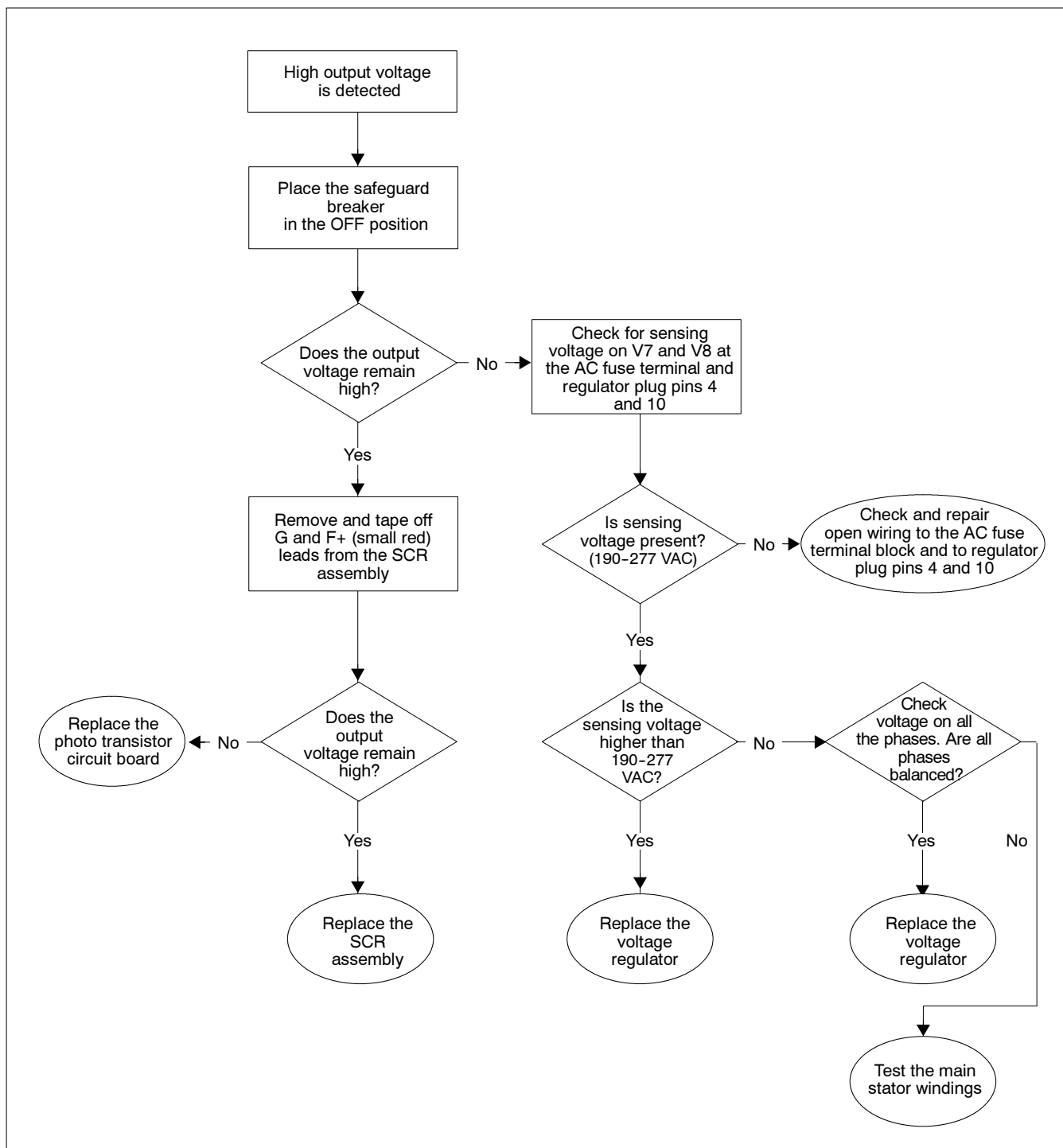


Figure 2 Troubleshooting Flowchart for High Output Voltage

