

SERVICE BULLETIN

Original Issue Date: 7/11
Model: 20-1000 kW with Decision-Maker® 3000 Controller
Market: Industrial
Subject: Controller Voltage Selection Feature

Introduction

The Decision-Maker® 3000 controller with software version 2.8 or higher has a voltage selection feature. This feature allows the user to readily change the controller voltage for multiple-voltage applications such as towable generator sets. The generator set output leads still require reconnection if the generator set does not have a selector switch installed.

The controller voltage selection feature requires initial activation using SiteTech™ software where it is set to *true* (on). The factory default setting has the voltage selection feature set to *false* (off). The controller voltage selection menu does not appear until activated by the SiteTech™ software. Contact an authorized Kohler distributor for assistance if SiteTech™ software changes are needed.

A decal providing the voltage selection procedure is available in voltage selection decal kit GM81931-KP1.

Procedure

1.1 Controller Voltage Selection

- 1. Press the generator set master control OFF/RESET button to stop the generator set. See Figure 1.
- 2. Turn the controller pushbutton/rotary selector dial until it stops at the Volt Select menu. See Figure 2.

Note: If the Volt Select menu does not appear, the controller voltage selection feature was not activated using SiteTech™ software.

- 3. Press the selector dial and the voltage selection option (second line on the display) will start to flash.
- 4. Turn the selector dial clockwise or counterclockwise until the desired voltage selection option appears.
- 5. Press the selector dial. The second line on the display will stop flashing and the new voltage will appear.

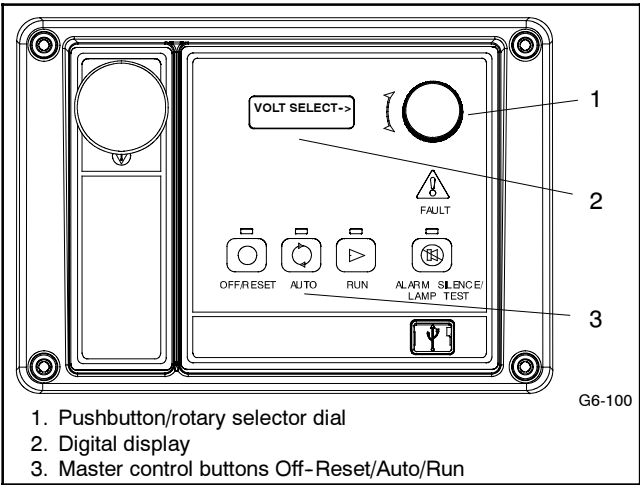


Figure 1 Decision-Maker® 3000 Controller

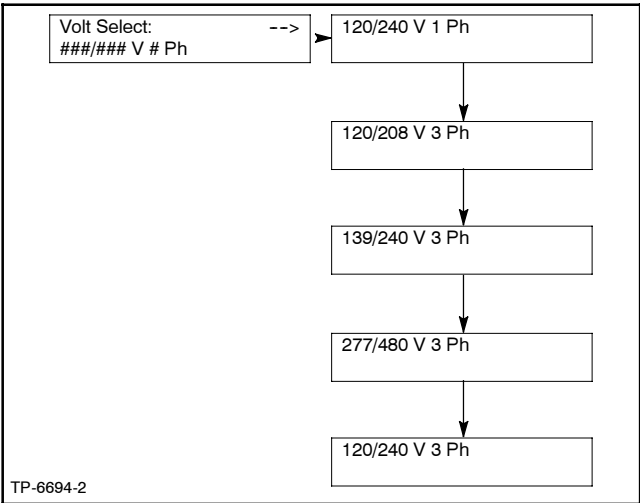


Figure 2 Volt Select Menu

- 6. Rotate the generator set voltage selector switch (if equipped) to match the desired voltage shown on the controller display.

If the generator set does not have a voltage selector switch, refer to the Generator Set Controller Operation Manual TP-6694 for voltage reconnection of the output leads.

Routing	Service Manager	Sales Manager	Parts Manager	Technician No. 1	Technician No. 2	Technician No. 3	Return This to
Initial Here							