

SERVICE BULLETIN

Original Issue Date: 7/14

Model: **100ERES, 100REZG, 125ERESB, 125/150REZGB, 180/200REZXB, and 180/200RZXB Generator Sets**

Market: **Industrial and Residential/Commercial Generator Sets**

Subject: **Radiator Bolt Torque Requirement**

Introduction

The service bulletin provides torque specifications for the radiator shroud. Kohler Co. has determined that bolts on the radiator of the above subject generator sets may have not been torqued properly at the factory. These bolts are used to secure the fan shroud to the radiator and to mount the charge air cooler.

Warranty Claim Information

At the next scheduled maintenance interval, torque these M8, Gr 8.8 bolts using the following procedure.

A flat rate of 0.5 hours is allowed for this update. No travel time or mileage is allowed.

This unit warranty claim update will expire on August 1, 2015.

Special Equipment

The following items are necessary

- Torque wrench
- Metric sockets

Safety Precautions

Observe the following safety precautions while performing this procedure.

Battery short circuits. Explosion can cause severe injury or death. Short circuits can cause bodily injury and/or equipment damage. Disconnect the battery before generator set installation or maintenance. Remove all jewelry before servicing the equipment. Use tools with insulated handles. Remove the negative (-) lead first when disconnecting the battery. Reconnect the negative (-) lead last when reconnecting the battery. Never connect the negative (-) battery cable to the positive (+) connection terminal of the starter solenoid. Do not test the battery condition by shorting the terminals together.

⚠ WARNING



**Accidental starting.
Can cause severe injury or death.**

Disconnect the battery cables before working on the generator set. Remove the negative (-) lead first when disconnecting the battery. Reconnect the negative (-) lead last when reconnecting the battery.

Disabling the generator set. Accidental starting can cause severe injury or death. Before working on the generator set or connected equipment, disable the generator set as follows: (1) Move the generator set master switch to the OFF position. (2) Disconnect the power to the battery charger. (3) Remove the battery cables, negative (-) lead first. Reconnect the negative (-) lead last when reconnecting the battery. Follow these precautions to prevent starting of the generator set by an automatic transfer switch, remote start/stop switch, or engine start command from a remote computer.

(Decision-Maker® 3+ and 550 Controllers)

Disabling the generator set. Accidental starting can cause severe injury or death. Before working on the generator set or equipment connected to the set, disable the generator set as follows: (1) Press the generator set off/reset button to shut down the generator set. (2) Disconnect the power to the battery charger, if equipped. (3) Remove the battery cables, negative (-) lead first. Reconnect the negative (-) lead last when reconnecting the battery. Follow these precautions to prevent the starting of the generator set by the remote start/stop switch.

(Decision-Maker® 3000 and 6000 Controllers)

Routing	Service Manager	Sales Manager	Parts Manager	Technician No. 1	Technician No. 2	Technician No. 3	Return This to
Initial Here							

Procedure

1. **Remove the generator set from service.**
 - 1.1 **Controllers: Decision-Maker® 3+ and Decision-Maker® 550.** Place the generator set master switch to the OFF/RESET position.

OR
Controllers: Decision-Maker® 3000 and Decision-Maker® 6000. Press the generator set master control OFF/RESET button.
 - 1.2 Disconnect the battery, negative (-) lead first.
 - 1.3 Disconnect the battery charger, if equipped.
2. **Torque the bolts.**
 - 2.1 Use a torque wrench to tighten the M8, Gr 8.8 bolts to 19 Nm (14 ft. lbs.). Refer to Figure 1 and Figure 2 for bolt locations. Do not over tighten.
3. **Return the generator set to service**
 - 3.1 Reconnect the battery, negative (-) lead last.
 - 3.2 Reconnect the battery charger, if equipped.

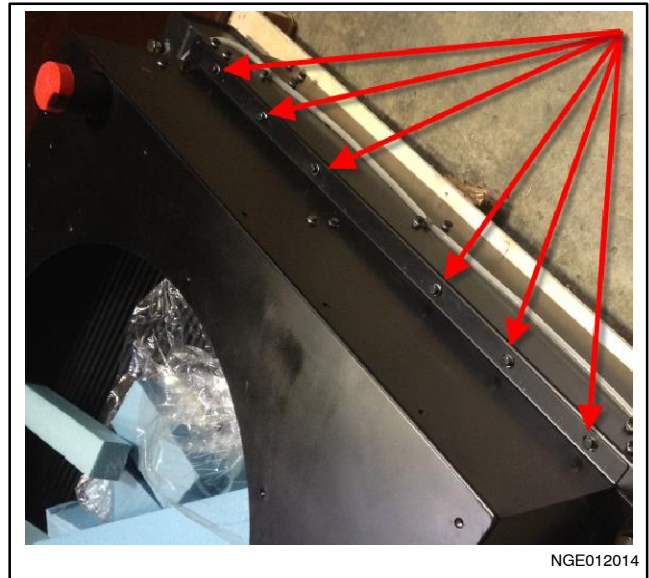


Figure 1 Radiator Fan Shroud Bolts

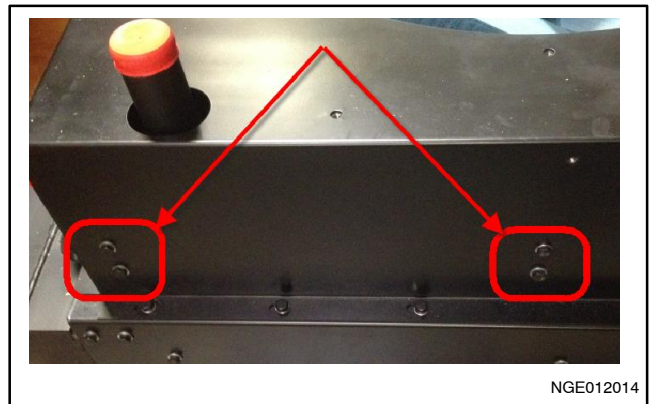


Figure 2 Charge Air Cooler Bolts

Availability is subject to change without notice. Kohler Co. reserves the right to change the design or specifications without notice and without any obligation or liability whatsoever. Contact your local Kohler® generator set distributor for availability.

© 2014 by Kohler Co. All rights reserved.