

SERVICE BULLETIN

Original Issue Date: 6/16

Model: GEN5.0, Spec: PA-GEN50-3003 Only

Market: Portable Generator Sets

Subject: Wiring Discrepancy Fix

Notice - Risk of Electrical Shock - Mandatory Product Update

Kohler Power Systems is issuing a recall on Kohler portable generator sets manufactured between January 8, 2016 and January 26, 2016. This recall is to correct an error in the generator set 120 Volt electrical wiring. This incorrect wiring can, under certain conditions, result in the "Neutral" contact in the receptacle to become "Hot" or "Live" with respect to ground. This wiring error increases the risk of electrical shock in the event an unprotected electrical device is plugged into the generator set. GEN5.0 generator sets with Specification PA-GEN50-3003 manufactured before serial number 4602131185 are affected.

The solution is to modify the position of the white jumper cable.

Follow these instructions to modify the wiring.

Tools Needed

- 8mm socket
- Drive for socket
- Red circle decal
- Box cutter if doing the rework through the side of the box

Time Needed

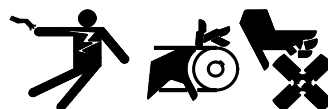
- 0.3 hours (18 minutes)

Procedure

Rework can be performed two ways on the Portable generator sets:

- The unit can be completely removed from the packaging as normal for access to the wiring.
- Alternatively, rework the unit through the side of the box as described in the *Side Rework* Section on page 4.

⚠ WARNING



**Accidental starting.
Can cause severe injury or death.**

Disconnect and ground spark plug lead(s) before servicing.

1. Ensure the red Engine Switch is in the OFF position.
2. Ensure the circuit breaker is in the OFF position.
3. Using an 8mm socket, remove the two screws holding the rear cover in place. See Figure 1.

Routing	Service Manager	Sales Manager	Parts Manager	Technician No. 1	Technician No. 2	Technician No. 3	Return This to
Initial Here							



Figure 1 Cover Screws

4. Remove the cover by pulling the plastic housing straight back from the unit. See Figure 2.



Figure 2 Cover Removal

5. Using the 8mm socket, remove the nut holding the white jumper cable terminal in place. See Figure 3.

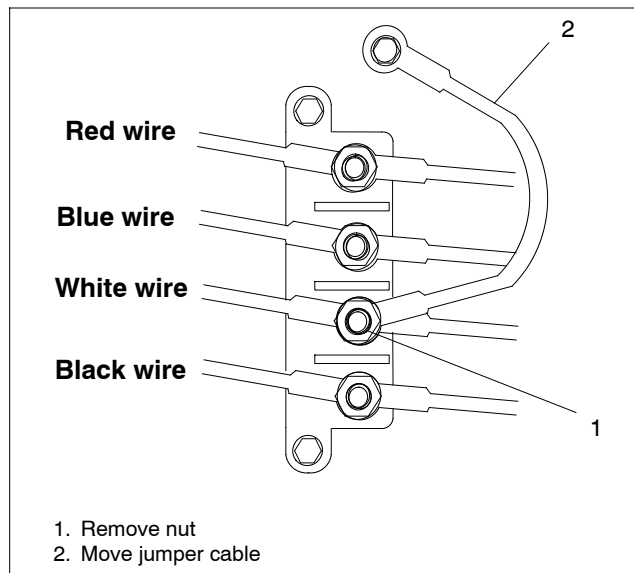


Figure 3 Current Jumper Cable Position

6. Remove the jumper end from the terminal, and reinstall the flat washer, then the split washer, and then the nut using the 8mm socket. Torque nuts to 5.8 Nm (51 in. lbs.).
7. Remove the nut, split washer, and flat washer from the blue wire terminal.
8. Install the white jumper cable end to the terminal of the blue wires.
9. Install the flat washer, split washer, and then the nut using the 8mm socket. See Figure 4. Torque nuts to 5.8 Nm (51 in. lbs.).

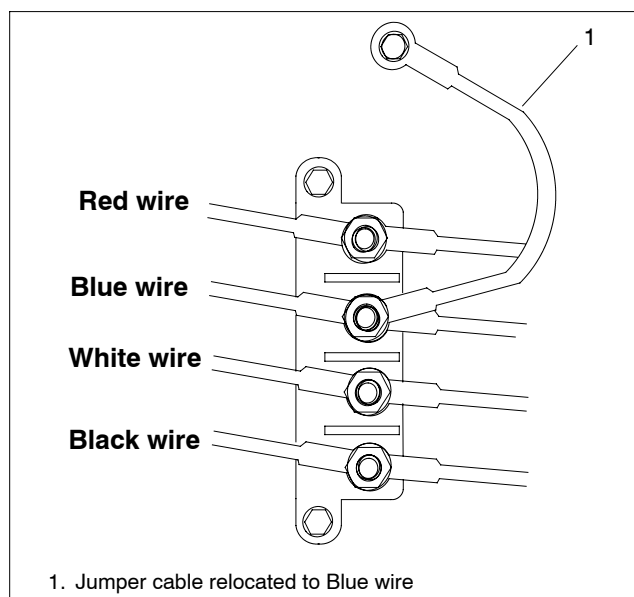


Figure 4 Modified Wiring

10. Slide the rear cover back onto the end of the alternator, ensuring the cover slides properly into the rubber wire gasket.

11. Install the 2 screws to hold the cover in place using the 8mm socket. See Figure 5.
Torque screws to 4 Nm (35 in. lbs.).
12. Affix one red circle decal, included with the service bulletin mailing, to the top of the rear cover. See Figure 5 for location.

Additional decals can be obtained by contacting the Kohler Power Systems Generator Field Service Department.

Please email:

generatorfieldservice@kohler.com

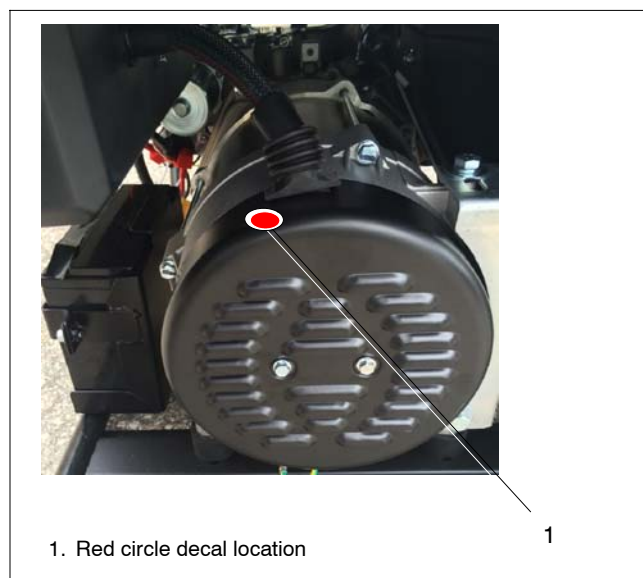


Figure 5 Red Circle Decal Location

Warranty

For all Kohler Portable dealers and distributors, after completion of the above repairs, please submit a Warranty Repair type warranty claim using the following instructions located online at:

Engine Warranty System

<http://enginewarranty.kohler.net.com>

When submitting a warranty claim use only the Generator Set Serial Number. See Figure 6 for the serial number location. If the serial number is not found when trying to enter a warranty claim please email us at portableswarrantyclaims@kohler.com and include the generator set model, serial number, and spec number in your email. Complete the warranty claim using 37 518 02-S, 10 Gage White Wire as the defective part number, defect failure code as EF (Electrical Failure), enter ME6331Y in the Work Unit field, and 0.3 hours of labor using the flat rate code 6000.

If multiple units are inspected and repaired, attach a complete list of each generator set model, serial number and spec number to the warranty claim.

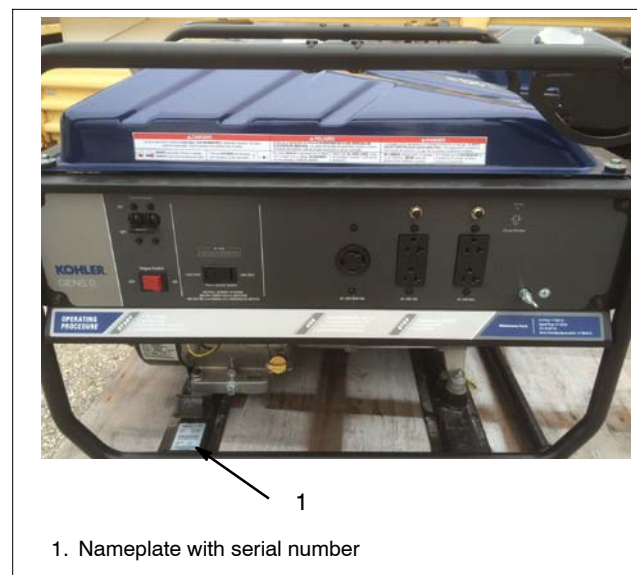


Figure 6 Location of Generator Set Nameplate

Side Rework

Follow these instructions to access and rework the generator set through the side of the box.

1. To avoid cutting the bag inside the box, adjust the box cutter blade depth to approximately 1/4 in.
2. Cut the box following the location and dimensions in Figure 7.
3. Cut an opening into the plastic bag to allow access to the rear cover.
4. Perform rework as instructed in step 3 through step 12 earlier in this bulletin.
5. Retape the cuts made in the plastic bag and box.

Note: Open the box top if necessary to verify which box side to cut. The rear back cover side of the generator set is opposite side of the fuel tank cap.

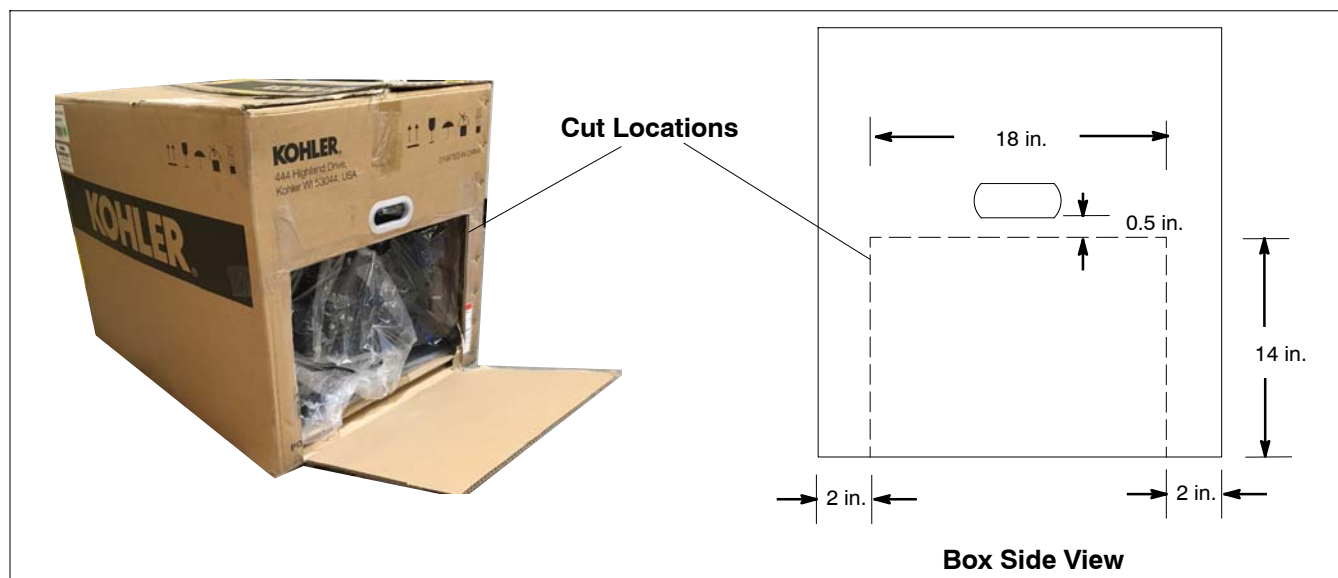


Figure 7 Cut Locations and Dimensions

Availability is subject to change without notice. Kohler Co. reserves the right to change the design or specifications without notice and without any obligation or liability whatsoever. Contact your local Kohler® generator set distributor for availability.

© 2016 by Kohler Co. All rights reserved.