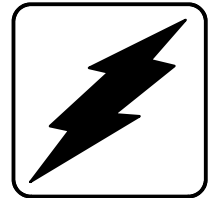


Wiring Diagrams

Industrial Generator Sets



Models:

6-15ROY/ROZ (Yanmar-Powered)

Controllers:

Decision-Maker™ 3, 5-Light
Relay

KOHLER[®]
POWER SYSTEMS

9001
KOHLER
POWER SYSTEMS
NATIONALLY REGISTERED

TP-5715 11/97a

Product Identification Information

Product identification numbers determine service parts. Record the product identification numbers in the spaces below immediately after unpacking the products so that the numbers are readily available for future reference. Record field-installed kit numbers after installing the kits.

Generator Set Identification Numbers

Record the product identification numbers from the generator set nameplate(s).

Model Designation _____

Specification Number _____

Serial Number _____

Accessory Number	Accessory Description
_____	_____
_____	_____
_____	_____
_____	_____
_____	_____
_____	_____
_____	_____
_____	_____
_____	_____
_____	_____
_____	_____
_____	_____
_____	_____
_____	_____
_____	_____
_____	_____
_____	_____
_____	_____
_____	_____
_____	_____
_____	_____
_____	_____

Controller Identification

Record the controller description from the generator set operation manual, spec sheet, or sales invoice.

Controller Description _____

Engine Identification

Record the product identification information from the engine nameplate.

Manufacturer _____

Model Designation _____

Serial Number _____

This manual contains the wiring diagrams for the 6-15ROY/ROZ Yanmar-powered models equipped with microprocessor controller and relay controller. Use the wiring diagram cross-reference to determine the correct wiring diagrams.

Information in this publication represents data available at the time of print. Kohler Co. reserves the right to change this publication and the products represented without notice and without any obligation or liability whatsoever.

Service Assistance

For professional advice on generator power requirements and conscientious service, please contact your nearest Kohler distributor or dealer.

- Consult the Yellow Pages under the heading Generators—Electric
- Visit the Kohler Power Systems website at KohlerPowerSystems.com
- Look at the labels and stickers on your Kohler product or review the appropriate literature or documents included with the product
- Call toll free in the US and Canada 1-800-544-2444
- Outside the US and Canada, call the nearest regional office

Headquarters Europe, Middle East, Africa (EMEA)

Kohler Power Systems
ZI Senia 122
12, rue des Hauts Flouviars
94517 Thiais Cedex
France
Phone: (33) 1 41 735500
Fax: (33) 1 41 735501

Asia Pacific

Power Systems Asia Pacific Regional Office
Singapore, Republic of Singapore
Phone: (65) 6264-6422
Fax: (65) 6264-6455

China

North China Regional Office, Beijing
Phone: (86) 10 6518 7950
(86) 10 6518 7951
(86) 10 6518 7952
Fax: (86) 10 6518 7955

East China Regional Office, Shanghai
Phone: (86) 21 6288 0500
Fax: (86) 21 6288 0550

India, Bangladesh, Sri Lanka

India Regional Office
Bangalore, India
Phone: (91) 80 3366208
(91) 80 3366231
Fax: (91) 80 3315972

Japan, Korea

North Asia Regional Office
Tokyo, Japan
Phone: (813) 3440-4515
Fax: (813) 3440-2727

Latin America

Latin America Regional Office
Lakeland, Florida, USA
Phone: (863) 619-7568
Fax: (863) 701-7131

Wiring Diagrams

At the time of print, this manual applied to the model numbers and specification (spec) numbers following. On occasion this manual may be applicable to specs not listed below, such as when similar new specs are created prior to the updated reprint or in cases where the manual is deemed an acceptable substitute for a manual under development.

Use the Wiring Diagram Cross-Reference to determine the correct version number for a given model number and spec number. Find that version number in the Controller Wiring Diagrams Reference and determine the wiring diagrams by choosing the type of controller on the generator set. Wiring diagram pages are numbered and arranged in numerical sequence by the numeric part of the alphanumeric part number.

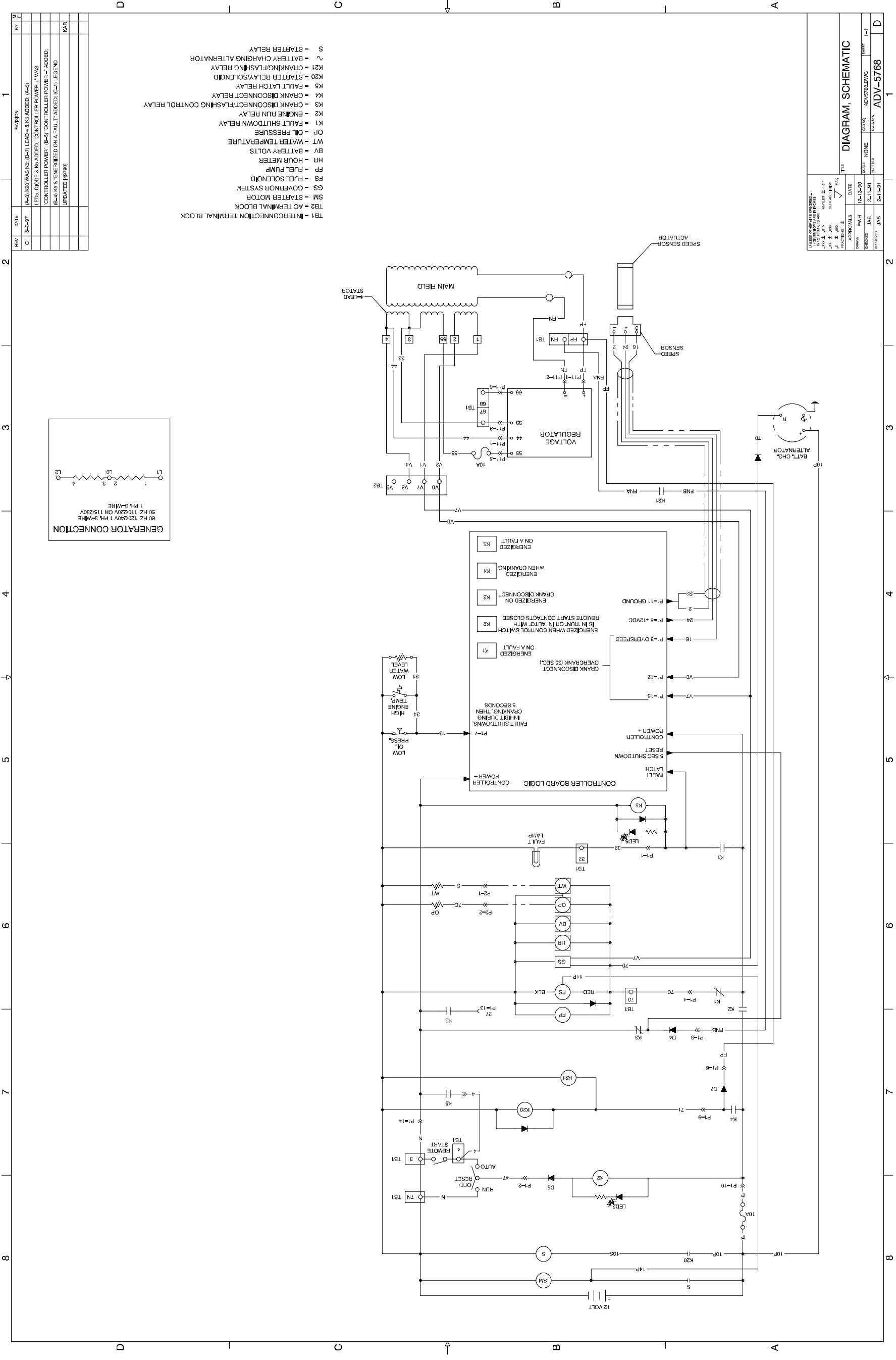
Wiring Diagram Cross-Reference

Model No.	Spec. No.	Wiring Diagram Version No.
6ROY/ROZ	126506-	1
10ROY/ROZ	126606-	1
15ROY/ROZ	126701-	1

6-15ROY/ROZ Controller Wiring Diagrams Reference

Controller Description (6-15ROY/ROZ)	Version 1	Pg
5-Light Microprocessor Controller		
Point-to-Point Wiring Diagram		
1-Phase, Sheet 1	225085A-B	8
1-Phase, Sheet 2	225085B-A	9
1-Phase Remote Mounted	225141-A	14
3-Phase/600V, Sheet 1	225089A-B	12
3-Phase/600V, Sheet 2	225089B-A	13
3-Phase/600V Remote Mounted	225142-A	15
Schematic Diagram		
1-Phase	ADV-5770-A	3
3-Phase	ADV-5771-	4
600V	ADV-5772-A	5
Microprocessor Controller Accessory Connections		
Accessories	256876A-E	16
Remote Annunciator Kit		
10-Relay	256876B-E	17
14-Relay	256876C-A	18
Relay Controller		
Point-to-Point Wiring Diagram		
1-Phase, Sheet 1	225084A-F	6
1-Phase, Sheet 2	225084B-A	7
3-Phase, Sheet 1	225088A-F	10
3-Phase, Sheet 2	225088B-A	11
Schematic Diagram		
1-Phase	ADV-5768-C	1
3-Phase	ADV-5769-C	2

Notes

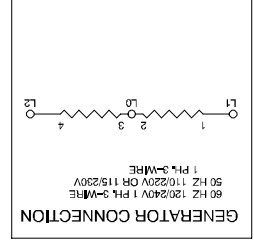


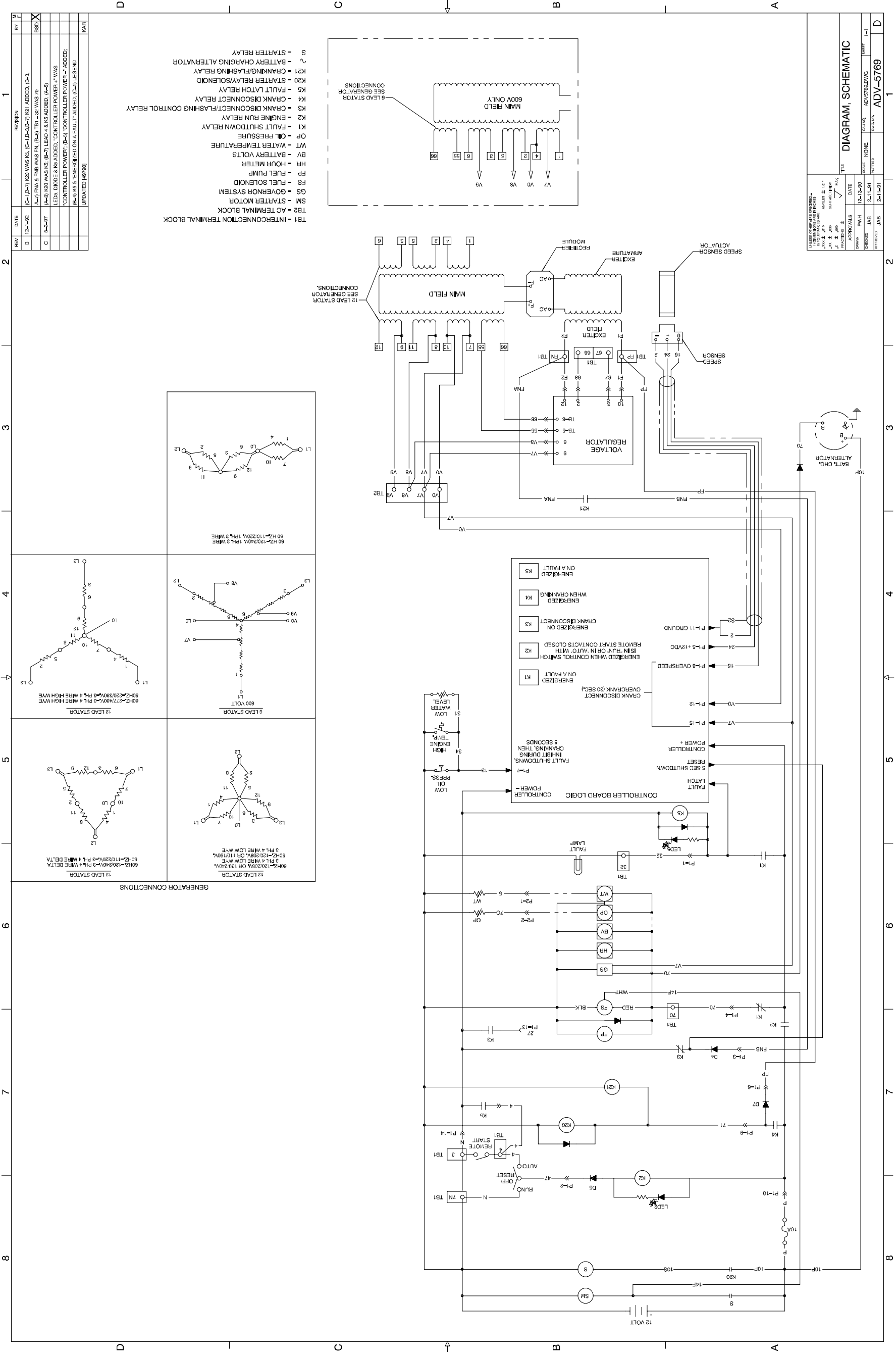
Relay Controller, Schematic Diagram, 1ph, ADV-5768-C

APPROVED FOR RELEASE AUTHORITY: 101-10-90 DATE: 2-11-91 BY: JMB CONTROL NUMBER: ADV-5768		TITLE DIAGRAM, SCHEMATIC	
APPROVALS DATE: 10-10-90 BY: JMB CONTROL NUMBER: ADV-5768	SCALE: NONE SHEET: 1-1	DRAWING DATE: 10-10-90 BY: JMB CONTROL NUMBER: ADV-5768	SHEET 1-1

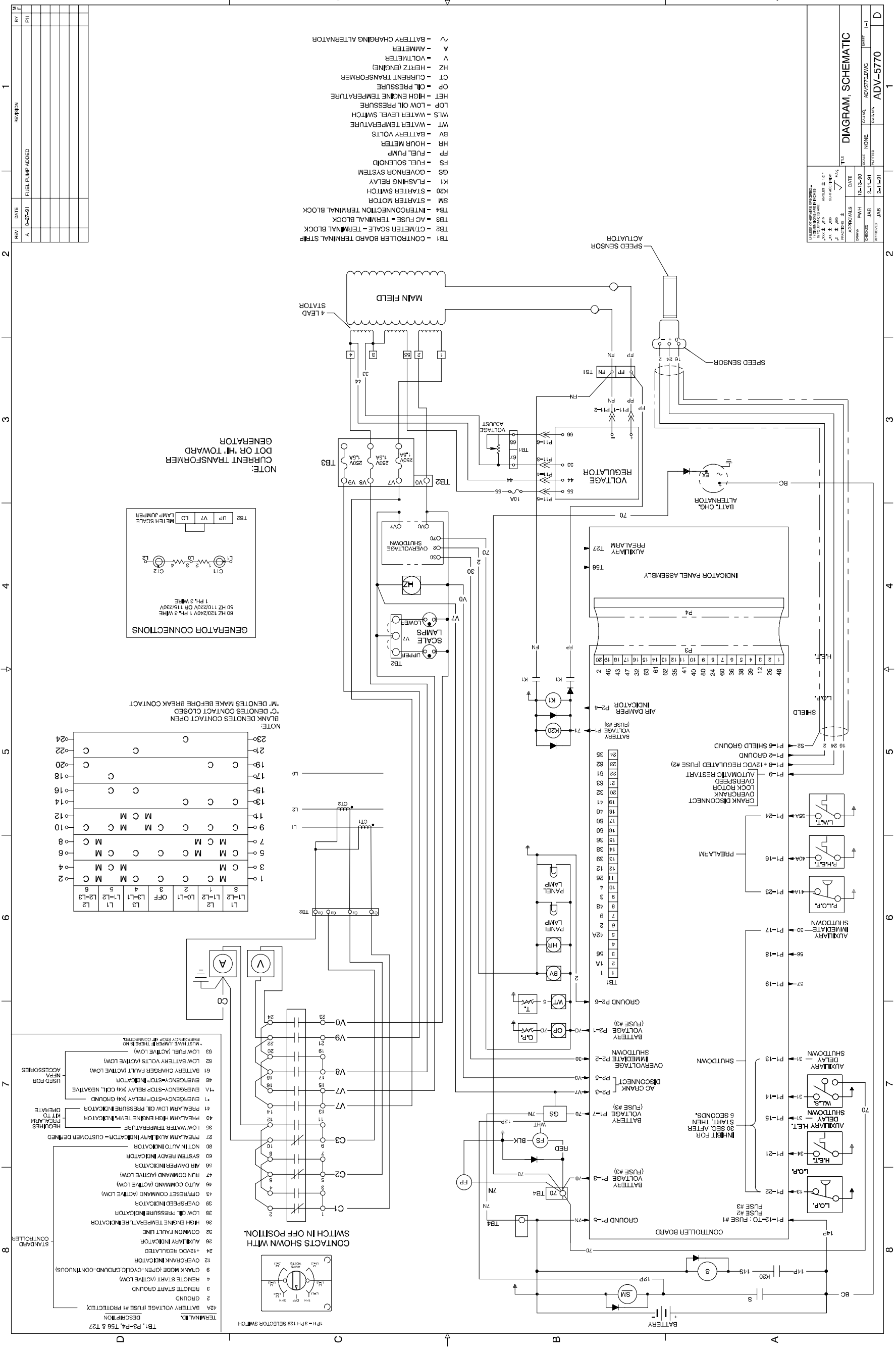
- TB1 - INTERCONNECTION TERMINAL BLOCK
- TS2 - AC TERMINAL BLOCK
- SM - STARTER MOTOR
- GS - GOVERNOR SYSTEM
- FS - FUEL SOLENOID
- FP - FUEL PUMP
- HR - HOUR METER
- BV - BATTERY VOLTS
- WT - WATER TEMPERATURE
- OP - OIL PRESSURE
- K1 - FAULT SHUTDOWN RELAY
- K2 - ENGINE RUN RELAY
- K3 - CRANK DISCONNECT/FLASHING CONTROL RELAY
- K4 - CRANK DISCONNECT RELAY
- K5 - FAULT LATCH RELAY
- K9 - STARTER RELAY/SOLENOID
- K20 - STARTER FLASHING RELAY
- K21 - BATTERY CHARGING ALTERNATOR
- ~ - BATTERY CHARGING ALTERNATOR
- S - STARTER RELAY

REV	DATE	REVISION	BY
C	3-2-97	(A-B) K20 WAS K2; (B-7) LEAD 3 & K5 ADDED; (A-5) LEAD 5 ENDED & K5 ADDED; "CONTROLLER POWER" WAS "CONTROLLER POWER"; (B-5) "CONTROLLER POWER" ADDED; (B-4) K5 & TERMINAL ON A FAULT ADDED; (C-1) LEGEND UPDATED (RFR)	JMB



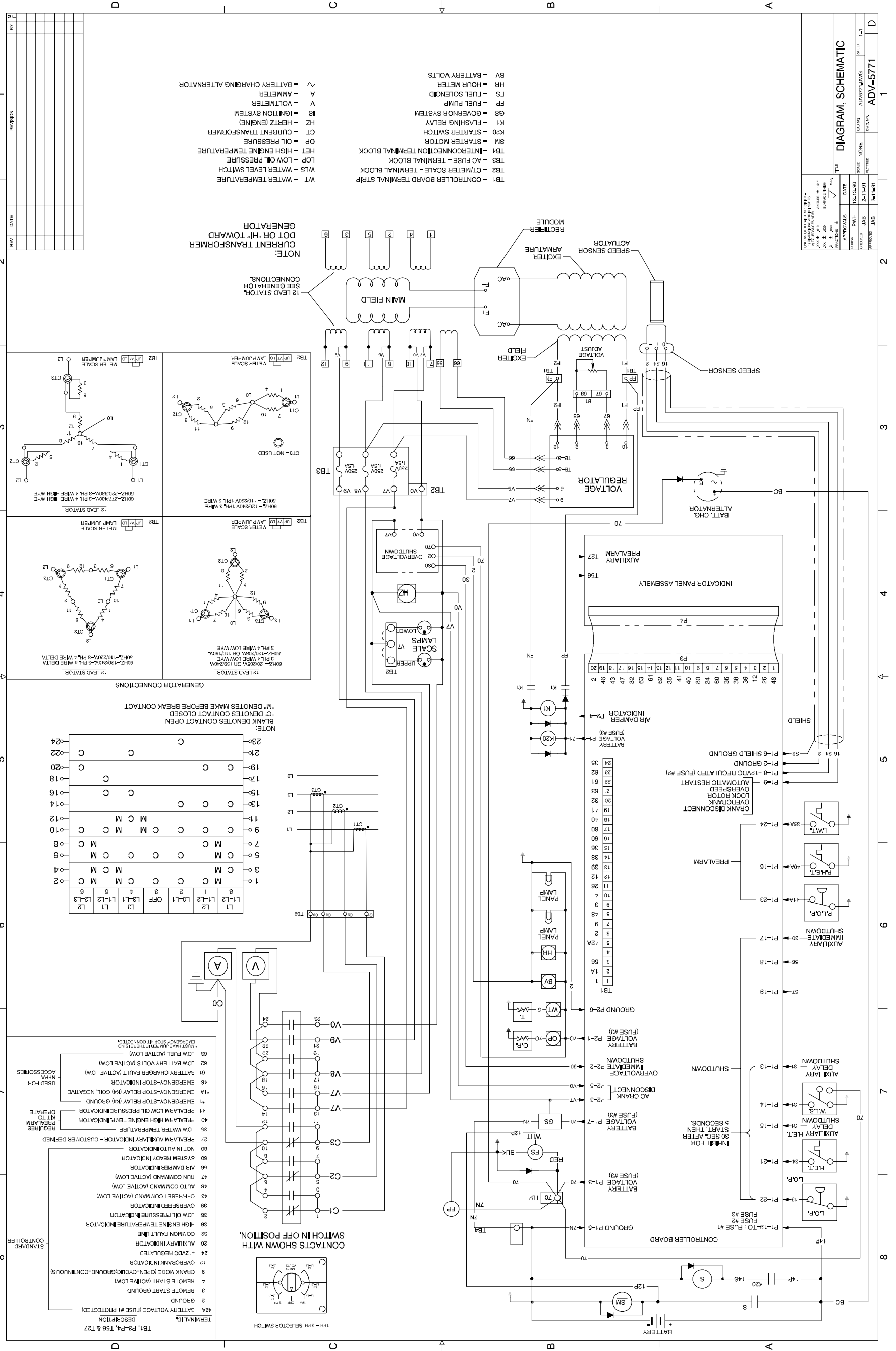


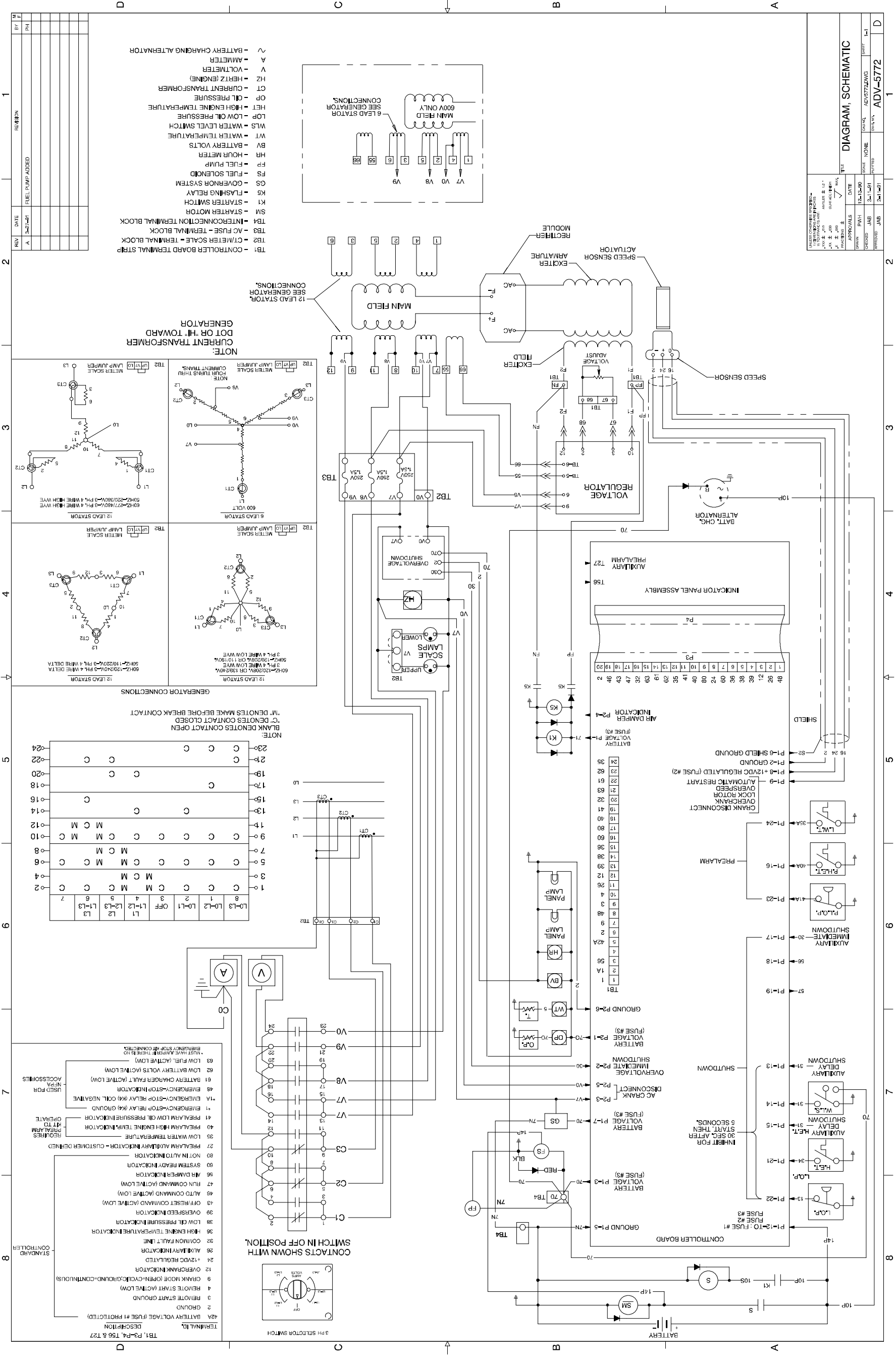
Relay Controller, Schematic Diagram, 3ph, ADV-5769-C



Microprocessor Controller, Schematic Diagram, 1ph, ADV-5770-A

Microprocessor Controller, Schematic Diagram, 3ph, ADV-5771-





REV	DATE	BY	REASON
A	3-20-87	PH	FUEL PUMP ADDED
B			
C			
D			

APPROVALS	DATE	SCALE	TITLE
DESIGNED: JMB	12-12-80	NONE	DIAGRAM, SCHEMATIC
DRAWN: JMB	2-11-81		
CHECKED: JMB			
APPROVED: JMB			

TERMINAL ID.	DESCRIPTION
TB1, P3, P4, T56 & T7	BATTERY VOLTAGE (FUSE #1 PROTECTED)
2	GROUND
3	REMOTE START GROUND
4	REMOTE START (ACTIVE LOW)
9	CRANK MODE (OPEN-CIRCUIT/GROUND-CONTINUOUS)
12	OVERCRANK INDICATOR
24	+12VDC REGULATED
26	AUXILIARY INDICATOR
32	COMMON FAULT LINE
36	HIGH ENGINE TEMPERATURE INDICATOR
38	OVERSPEED INDICATOR
39	OVERSPEED INDICATOR
43	OFF-RESET COMMAND (ACTIVE LOW)
47	RUN COMMAND (ACTIVE LOW)
48	AUTO COMMAND (ACTIVE LOW)
56	AIR DAMPER INDICATOR
80	SYSTEM READY INDICATOR
80	NOT IN AUTO INDICATOR
27	PREALARM AUXILIARY INDICATOR - CUSTOMER DEFINED
35	LOW WATER TEMPERATURE
40	PREALARM HIGH ENGINE TEMP. INDICATOR
41	PREALARM LOW OIL PRESSURE INDICATOR
11A	EMERGENCY-STOP RELAY (K4) GROUND
11A	EMERGENCY-STOP RELAY (K4) NEGATIVE
48	EMERGENCY-STOP INDICATOR
61	BATTERY CHARGER FAULT (ACTIVE LOW)
62	LOW BATTERY (ACTIVE LOW)
63	LOW FUEL (ACTIVE LOW)
63	EMERGENCY STOP (NOT CONNECTED)

TERMINAL ID.	DESCRIPTION
TB1, P3, P4, T56 & T7	BATTERY VOLTAGE (FUSE #1 PROTECTED)
2	GROUND
3	REMOTE START GROUND
4	REMOTE START (ACTIVE LOW)
9	CRANK MODE (OPEN-CIRCUIT/GROUND-CONTINUOUS)
12	OVERCRANK INDICATOR
24	+12VDC REGULATED
26	AUXILIARY INDICATOR
32	COMMON FAULT LINE
36	HIGH ENGINE TEMPERATURE INDICATOR
38	OVERSPEED INDICATOR
39	OVERSPEED INDICATOR
43	OFF-RESET COMMAND (ACTIVE LOW)
47	RUN COMMAND (ACTIVE LOW)
48	AUTO COMMAND (ACTIVE LOW)
56	AIR DAMPER INDICATOR
80	SYSTEM READY INDICATOR
80	NOT IN AUTO INDICATOR
27	PREALARM AUXILIARY INDICATOR - CUSTOMER DEFINED
35	LOW WATER TEMPERATURE
40	PREALARM HIGH ENGINE TEMP. INDICATOR
41	PREALARM LOW OIL PRESSURE INDICATOR
11A	EMERGENCY-STOP RELAY (K4) GROUND
11A	EMERGENCY-STOP RELAY (K4) NEGATIVE
48	EMERGENCY-STOP INDICATOR
61	BATTERY CHARGER FAULT (ACTIVE LOW)
62	LOW BATTERY (ACTIVE LOW)
63	LOW FUEL (ACTIVE LOW)
63	EMERGENCY STOP (NOT CONNECTED)

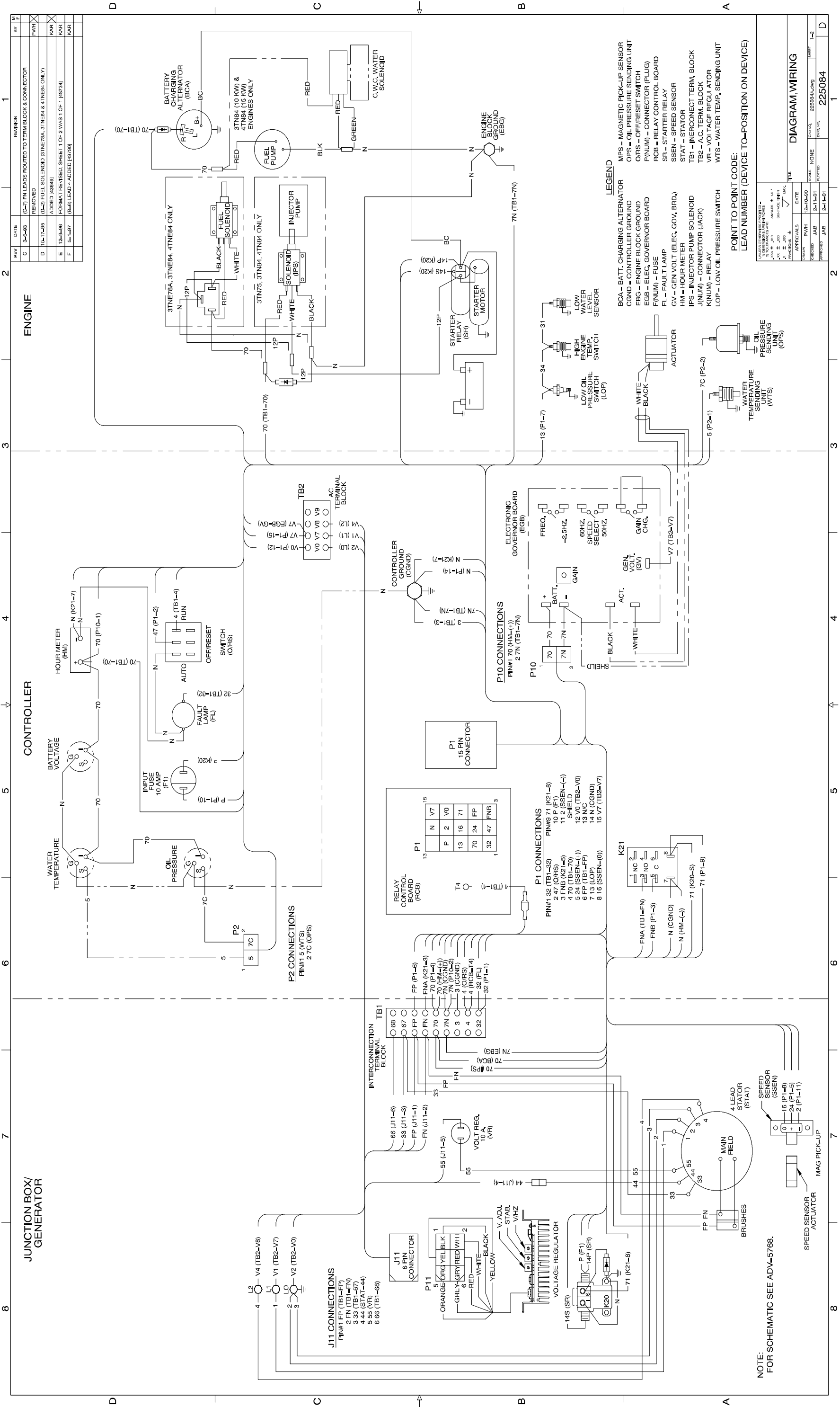
TERMINAL ID.	DESCRIPTION
TB1, P3, P4, T56 & T7	BATTERY VOLTAGE (FUSE #1 PROTECTED)
2	GROUND
3	REMOTE START GROUND
4	REMOTE START (ACTIVE LOW)
9	CRANK MODE (OPEN-CIRCUIT/GROUND-CONTINUOUS)
12	OVERCRANK INDICATOR
24	+12VDC REGULATED
26	AUXILIARY INDICATOR
32	COMMON FAULT LINE
36	HIGH ENGINE TEMPERATURE INDICATOR
38	OVERSPEED INDICATOR
39	OVERSPEED INDICATOR
43	OFF-RESET COMMAND (ACTIVE LOW)
47	RUN COMMAND (ACTIVE LOW)
48	AUTO COMMAND (ACTIVE LOW)
56	AIR DAMPER INDICATOR
80	SYSTEM READY INDICATOR
80	NOT IN AUTO INDICATOR
27	PREALARM AUXILIARY INDICATOR - CUSTOMER DEFINED
35	LOW WATER TEMPERATURE
40	PREALARM HIGH ENGINE TEMP. INDICATOR
41	PREALARM LOW OIL PRESSURE INDICATOR
11A	EMERGENCY-STOP RELAY (K4) GROUND
11A	EMERGENCY-STOP RELAY (K4) NEGATIVE
48	EMERGENCY-STOP INDICATOR
61	BATTERY CHARGER FAULT (ACTIVE LOW)
62	LOW BATTERY (ACTIVE LOW)
63	LOW FUEL (ACTIVE LOW)
63	EMERGENCY STOP (NOT CONNECTED)

TERMINAL ID.	DESCRIPTION
TB1, P3, P4, T56 & T7	BATTERY VOLTAGE (FUSE #1 PROTECTED)
2	GROUND
3	REMOTE START GROUND
4	REMOTE START (ACTIVE LOW)
9	CRANK MODE (OPEN-CIRCUIT/GROUND-CONTINUOUS)
12	OVERCRANK INDICATOR
24	+12VDC REGULATED
26	AUXILIARY INDICATOR
32	COMMON FAULT LINE
36	HIGH ENGINE TEMPERATURE INDICATOR
38	OVERSPEED INDICATOR
39	OVERSPEED INDICATOR
43	OFF-RESET COMMAND (ACTIVE LOW)
47	RUN COMMAND (ACTIVE LOW)
48	AUTO COMMAND (ACTIVE LOW)
56	AIR DAMPER INDICATOR
80	SYSTEM READY INDICATOR
80	NOT IN AUTO INDICATOR
27	PREALARM AUXILIARY INDICATOR - CUSTOMER DEFINED
35	LOW WATER TEMPERATURE
40	PREALARM HIGH ENGINE TEMP. INDICATOR
41	PREALARM LOW OIL PRESSURE INDICATOR
11A	EMERGENCY-STOP RELAY (K4) GROUND
11A	EMERGENCY-STOP RELAY (K4) NEGATIVE
48	EMERGENCY-STOP INDICATOR
61	BATTERY CHARGER FAULT (ACTIVE LOW)
62	LOW BATTERY (ACTIVE LOW)
63	LOW FUEL (ACTIVE LOW)
63	EMERGENCY STOP (NOT CONNECTED)

TERMINAL ID.	DESCRIPTION
TB1, P3, P4, T56 & T7	BATTERY VOLTAGE (FUSE #1 PROTECTED)
2	GROUND
3	REMOTE START GROUND
4	REMOTE START (ACTIVE LOW)
9	CRANK MODE (OPEN-CIRCUIT/GROUND-CONTINUOUS)
12	OVERCRANK INDICATOR
24	+12VDC REGULATED
26	AUXILIARY INDICATOR
32	COMMON FAULT LINE
36	HIGH ENGINE TEMPERATURE INDICATOR
38	OVERSPEED INDICATOR
39	OVERSPEED INDICATOR
43	OFF-RESET COMMAND (ACTIVE LOW)
47	RUN COMMAND (ACTIVE LOW)
48	AUTO COMMAND (ACTIVE LOW)
56	AIR DAMPER INDICATOR
80	SYSTEM READY INDICATOR
80	NOT IN AUTO INDICATOR
27	PREALARM AUXILIARY INDICATOR - CUSTOMER DEFINED
35	LOW WATER TEMPERATURE
40	PREALARM HIGH ENGINE TEMP. INDICATOR
41	PREALARM LOW OIL PRESSURE INDICATOR
11A	EMERGENCY-STOP RELAY (K4) GROUND
11A	EMERGENCY-STOP RELAY (K4) NEGATIVE
48	EMERGENCY-STOP INDICATOR
61	BATTERY CHARGER FAULT (ACTIVE LOW)
62	LOW BATTERY (ACTIVE LOW)
63	LOW FUEL (ACTIVE LOW)
63	EMERGENCY STOP (NOT CONNECTED)

TERMINAL ID.	DESCRIPTION
TB1, P3, P4, T56 & T7	BATTERY VOLTAGE (FUSE #1 PROTECTED)
2	GROUND
3	REMOTE START GROUND
4	REMOTE START (ACTIVE LOW)
9	CRANK MODE (OPEN-CIRCUIT/GROUND-CONTINUOUS)
12	OVERCRANK INDICATOR
24	+12VDC REGULATED
26	AUXILIARY INDICATOR
32	COMMON FAULT LINE
36	HIGH ENGINE TEMPERATURE INDICATOR
38	OVERSPEED INDICATOR
39	OVERSPEED INDICATOR
43	OFF-RESET COMMAND (ACTIVE LOW)
47	RUN COMMAND (ACTIVE LOW)
48	AUTO COMMAND (ACTIVE LOW)
56	AIR DAMPER INDICATOR
80	SYSTEM READY INDICATOR
80	NOT IN AUTO INDICATOR
27	PREALARM AUXILIARY INDICATOR - CUSTOMER DEFINED
35	LOW WATER TEMPERATURE
40	PREALARM HIGH ENGINE TEMP. INDICATOR
41	PREALARM LOW OIL PRESSURE INDICATOR
11A	EMERGENCY-STOP RELAY (K4) GROUND
11A	EMERGENCY-STOP RELAY (K4) NEGATIVE
48	EMERGENCY-STOP INDICATOR
61	BATTERY CHARGER FAULT (ACTIVE LOW)
62	LOW BATTERY (ACTIVE LOW)
63	LOW FUEL (ACTIVE LOW)
63	EMERGENCY STOP (NOT CONNECTED)

Microprocessor Controller, Schematic Diagram, 600V, ADV-5772-A



REV	DATE	REVISION	BY
C	3-4-83	(C-7) FN LEADS ROUTED TO TERM BLOCK & CONNECTOR	PWH
D	10-11-85	(L-2) FUEL SOLENOID (3TNE84, 3TNE87 & 4TNE84 ONLY)	KAR
E	12-2-86	FORMAT REVISED SHEET 1 OF 2 WAS 1 OF 1 (R9734)	KAR
F	1-1-87	(B-5) LEAD #4 ADDED (R9750)	KAR

LEGEND

BCA - BATT. CHARGING ALTERNATOR
 CGND - CONTROLLER GROUND
 EBG - ENGINE BLOCK GROUND
 EGB - ELEC. GOVERNOR BOARD
 F(NUM) - FUSE
 FL - FAULT LAMP
 GV - GEN VOLT (ELEC. GOV. BRD.)
 HM - HOUR METER
 IPS - INJECTOR PUMP SOLENOID
 J(NUM) - CONNECTOR (JACK)
 K(NUM) - RELAY
 LOP - LOW OIL PRESSURE SWITCH
 MPS - MAGNETIC PICK-UP SENSOR
 OPS - OIL PRESSURE SENDING UNIT
 O/RS - OFF/RESET SWITCH
 P(NUM) - CONNECTOR (PLUG)
 RCB - RELAY CONTROL BOARD
 SR - STARTER RELAY
 SSEN - SPEED SENSOR
 STAT - STATOR
 TB1 - INTERCONNECT TERM. BLOCK
 TB2 - A.C. TERM. BLOCK
 VR - VOLTAGE REGULATOR
 WTS - WATER TEMP. SENDING UNIT

APPROVALS		DATE	TITLE
DESIGNED	PWH	10-10-80	DIAGRAM, WIRING
CHECKED	JAB	2-11-81	
APPROVED	JAB	2-11-81	

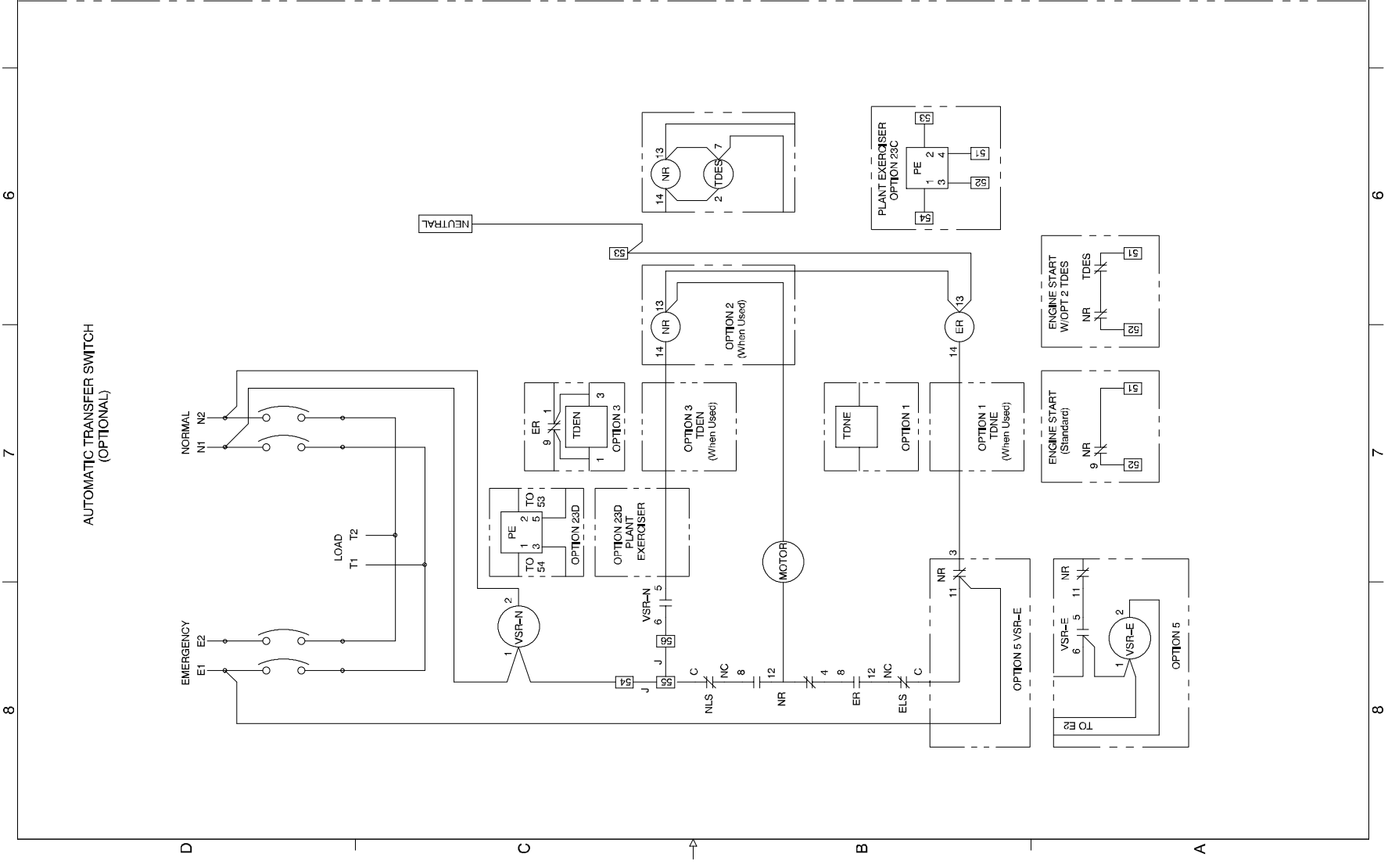
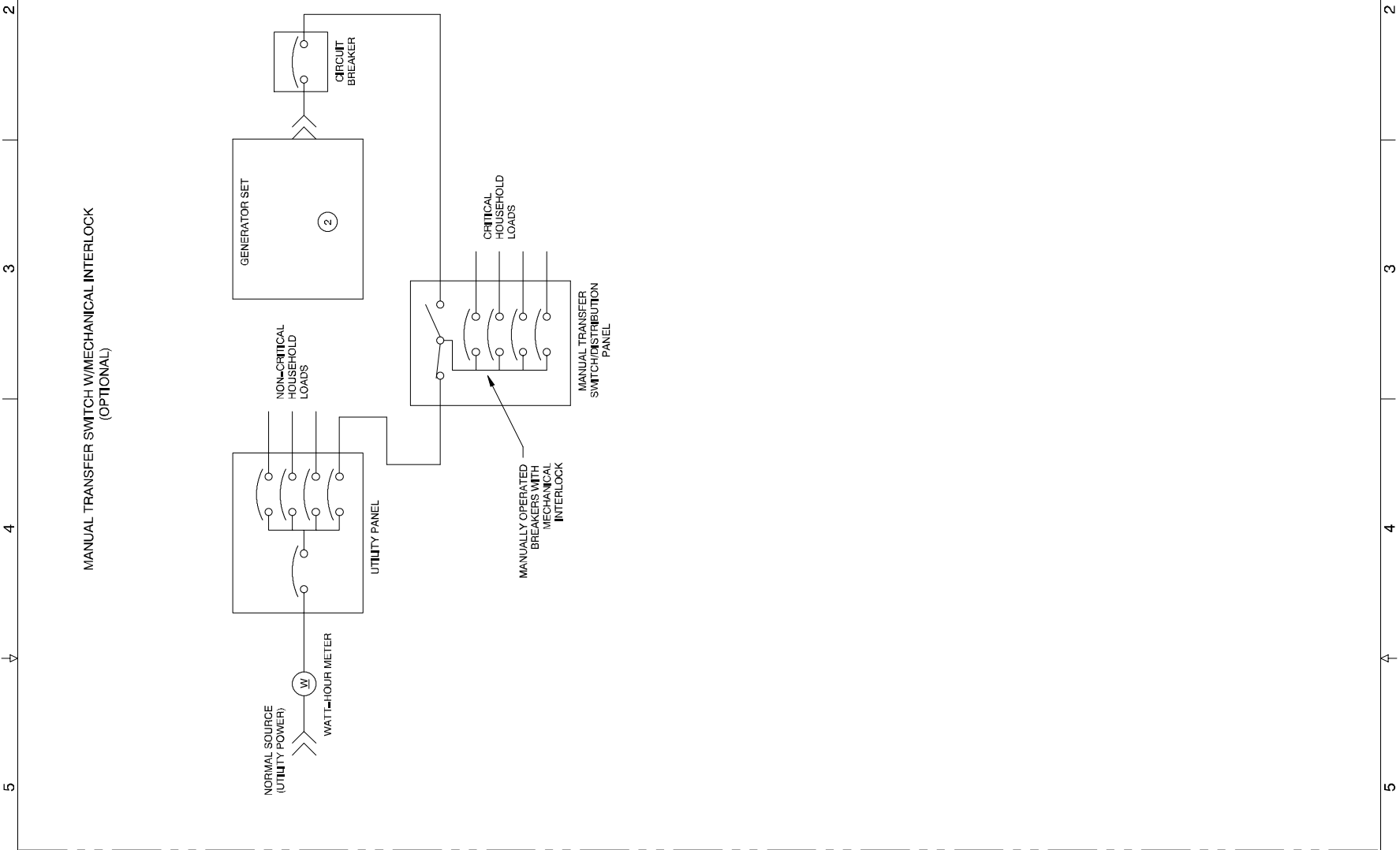
SCALE: NONE
 DRAWING NO.: 225084-010
 SHEET: 1-2
 DATA NO.: 225084

POINT TO POINT CODE:
 LEAD NUMBER (DEVICE TO-POSITION ON DEVICE)

NOTE:
 FOR SCHEMATIC SEE ADV-5788.

Relay Controller, Point-to-Point Wiring Diagram, 1ph, Sheet 1, 225084A-F

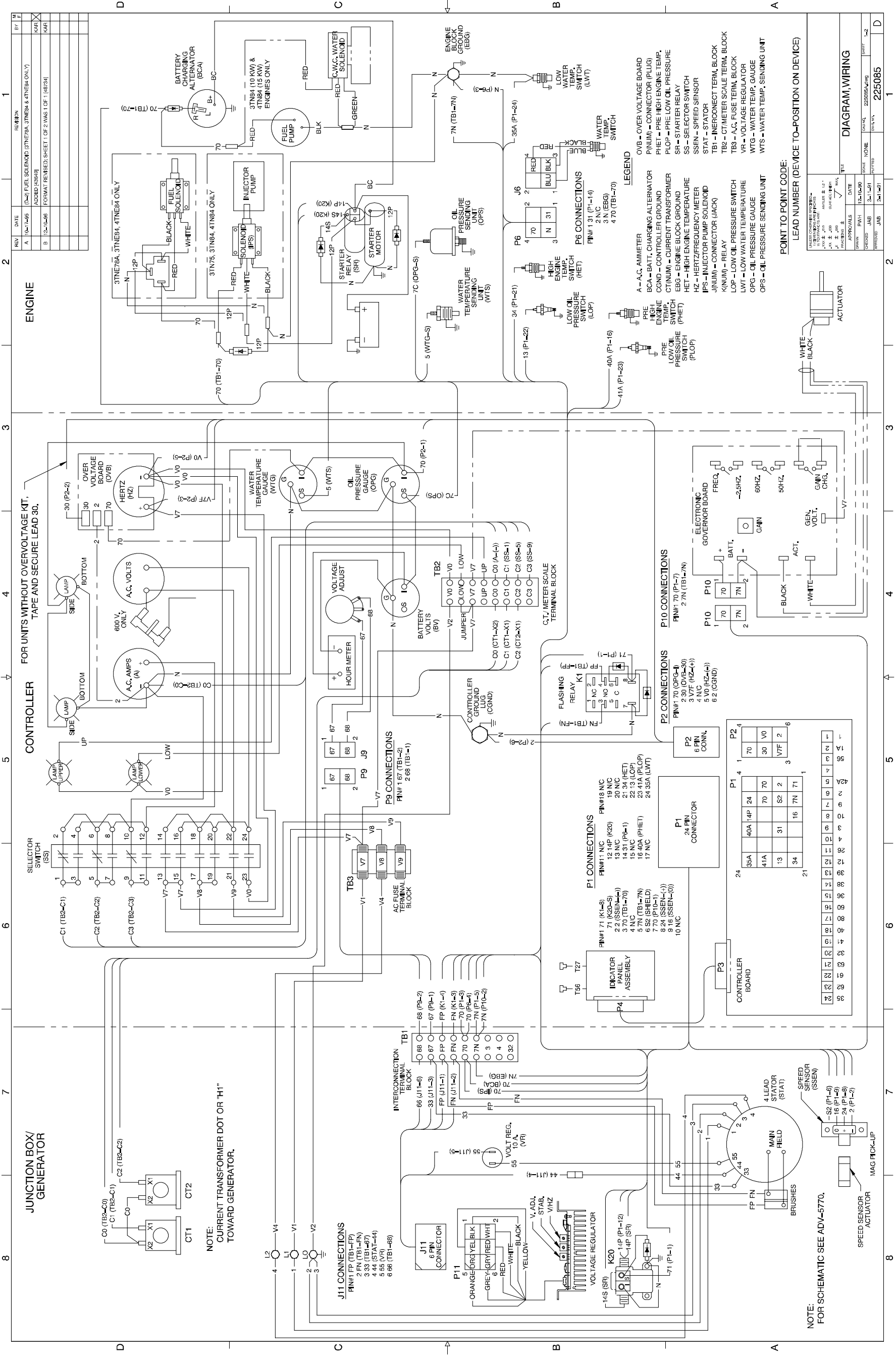
REV	DATE	REASON	BY
A	12-20-06	SHEET 2 OF 2 ADDED: AUTOMATIC & MANUAL TRANSFER SWITCH OPTIONS ADDED (48754)	KHR



REV	DATE	REASON	BY
A	12-20-06	SHEET 2 OF 2 ADDED: AUTOMATIC & MANUAL TRANSFER SWITCH OPTIONS ADDED (48754)	KHR

NO. OF SHEETS	TOTAL SHEETS	DATE	SCALE	TITLE
2	2	12/20/06	NONE	DIAGRAM, WIRING

Relay Controller, Point-to-Point Wiring Diagram, 1ph, Sheet 2, 225084B-A



REV	DATE	REASON	BY
A	10-1-85	(D-2) FUEL SOLENOID (3TNE78A, 3TNE84 & 4TNE84 ONLY) ADDRESS (43848)	KAR
B	12-14-86	FORMAT RE-REDESIGNED SHEET OF 2 WAS 1 OF 1 (46734)	KAR

NO.	DESCRIPTION	DATE	BY
1	DESIGNED	10-1-85	KAR
2	APPROVED	10-1-85	KAR
3	REVISED	12-14-86	KAR
4	REVISED	12-14-86	KAR
5	REVISED	12-14-86	KAR
6	REVISED	12-14-86	KAR
7	REVISED	12-14-86	KAR
8	REVISED	12-14-86	KAR

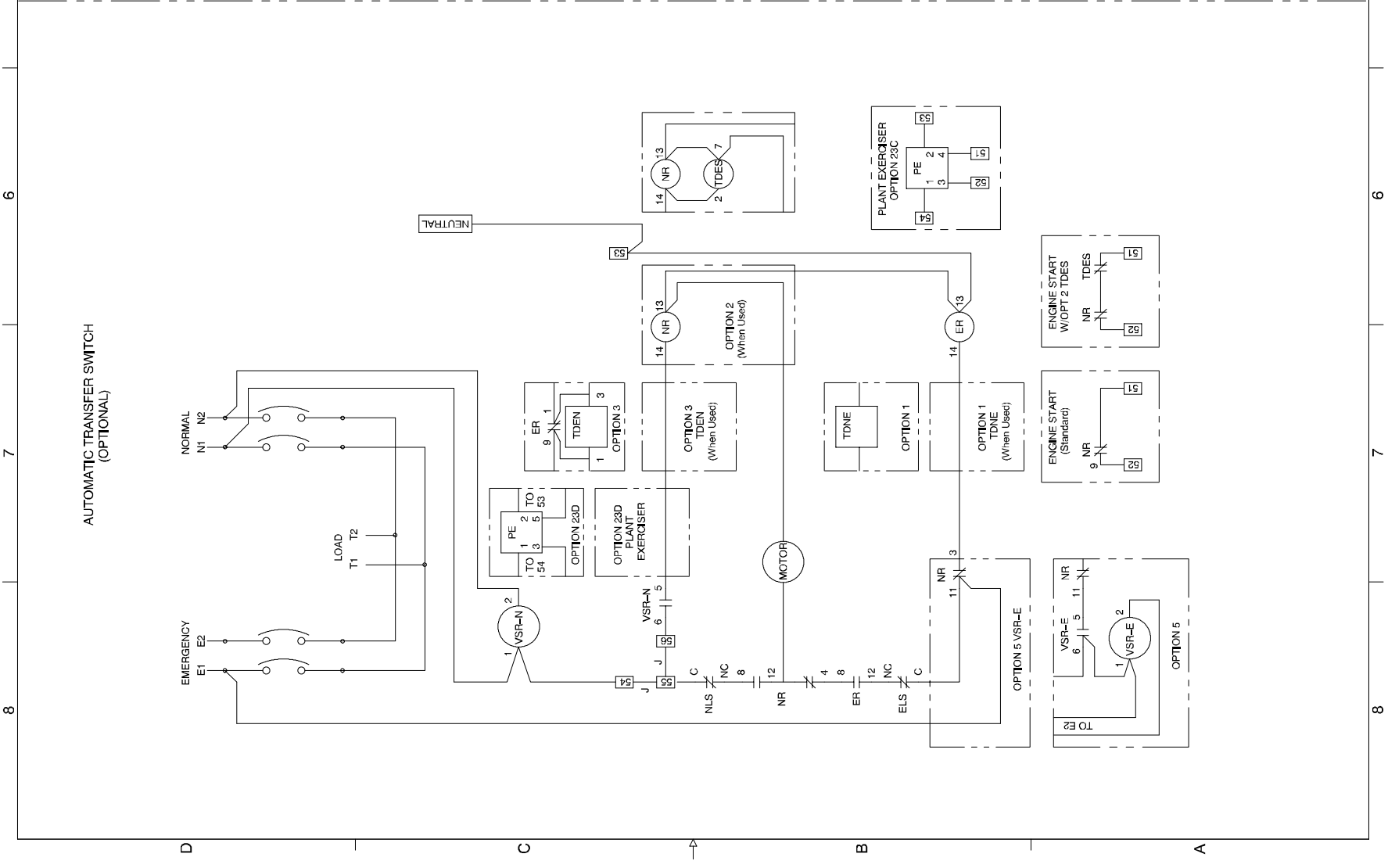
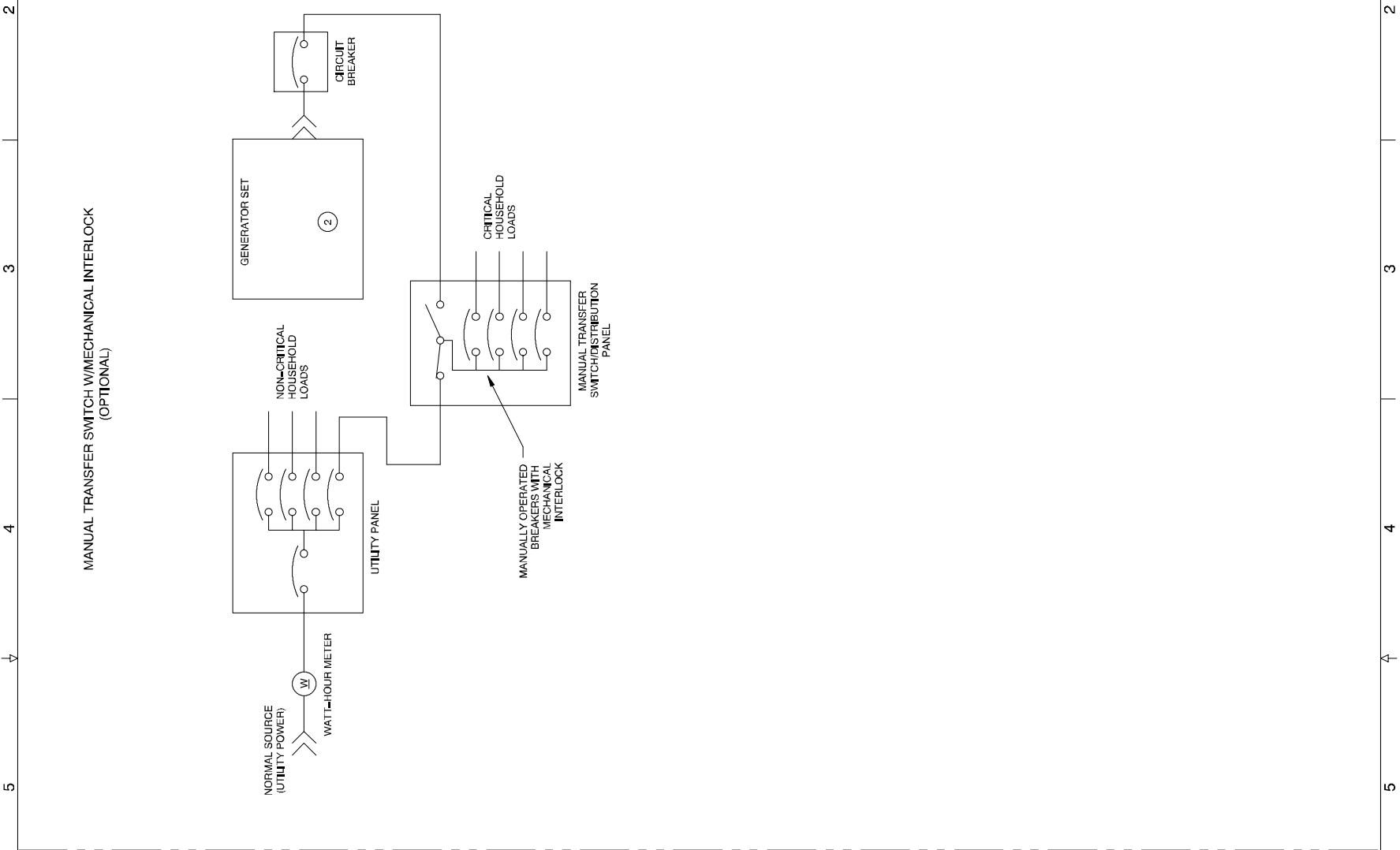
NO.	DESCRIPTION	DATE	BY
1	DESIGNED	10-1-85	KAR
2	APPROVED	10-1-85	KAR
3	REVISED	12-14-86	KAR
4	REVISED	12-14-86	KAR
5	REVISED	12-14-86	KAR
6	REVISED	12-14-86	KAR
7	REVISED	12-14-86	KAR
8	REVISED	12-14-86	KAR

NO.	DESCRIPTION	DATE	BY
1	DESIGNED	10-1-85	KAR
2	APPROVED	10-1-85	KAR
3	REVISED	12-14-86	KAR
4	REVISED	12-14-86	KAR
5	REVISED	12-14-86	KAR
6	REVISED	12-14-86	KAR
7	REVISED	12-14-86	KAR
8	REVISED	12-14-86	KAR

NO.	DESCRIPTION	DATE	BY
1	DESIGNED	10-1-85	KAR
2	APPROVED	10-1-85	KAR
3	REVISED	12-14-86	KAR
4	REVISED	12-14-86	KAR
5	REVISED	12-14-86	KAR
6	REVISED	12-14-86	KAR
7	REVISED	12-14-86	KAR
8	REVISED	12-14-86	KAR

Microprocessor Controller, Point-to-Point Wiring Diagram, 1ph, Sheet 1, 225085A-B

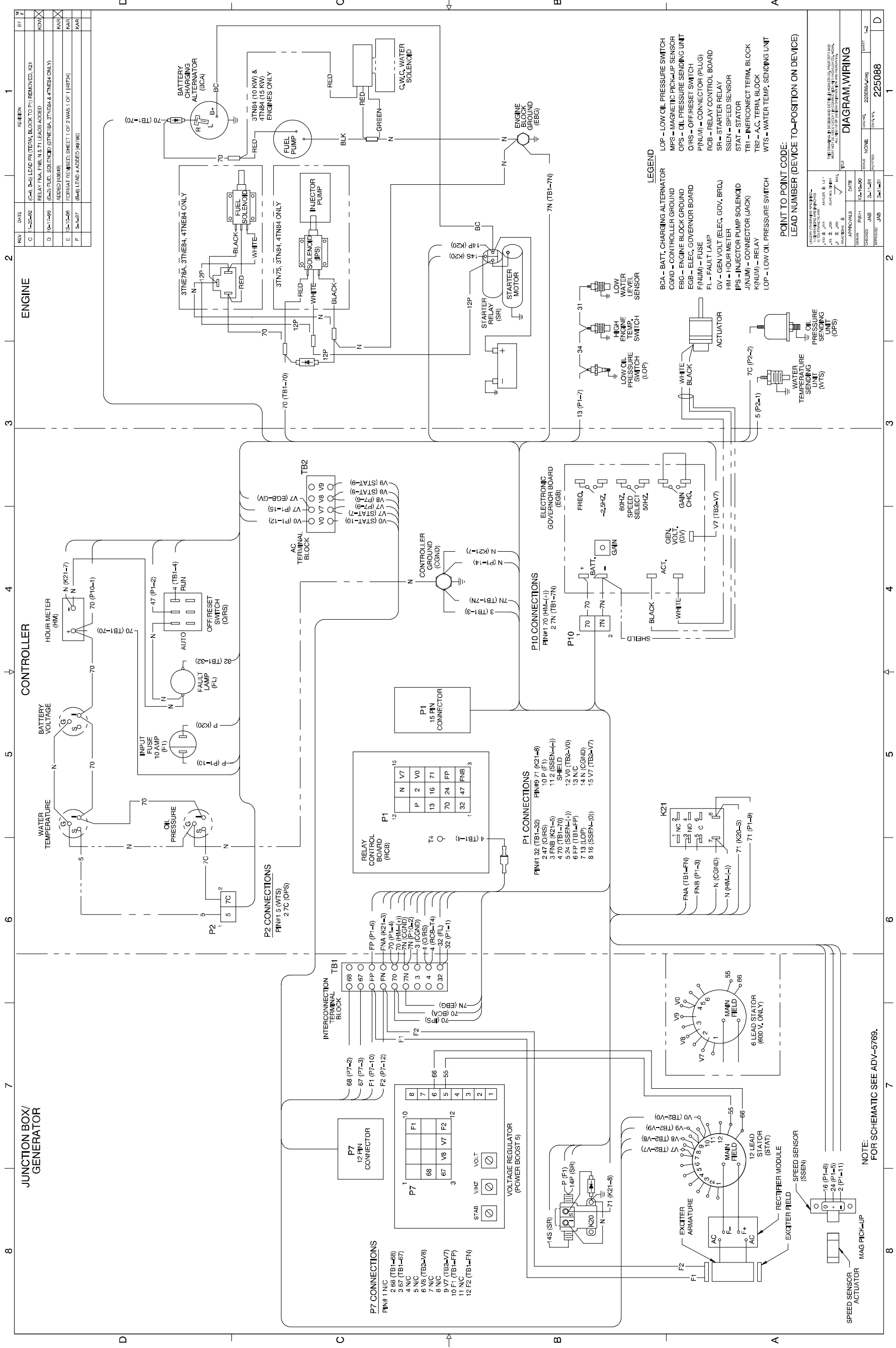
REV	DATE	REASON	BY
A	12-14-98	SHEET 2 OF 2 ADDED: AUTOMATIC & MANUAL TRANSFER SWITCH OPTIONS ADDED (48754)	KAR



REV	DATE	REASON	BY
A	12-14-98	SHEET 2 OF 2 ADDED: AUTOMATIC & MANUAL TRANSFER SWITCH OPTIONS ADDED (48754)	KAR

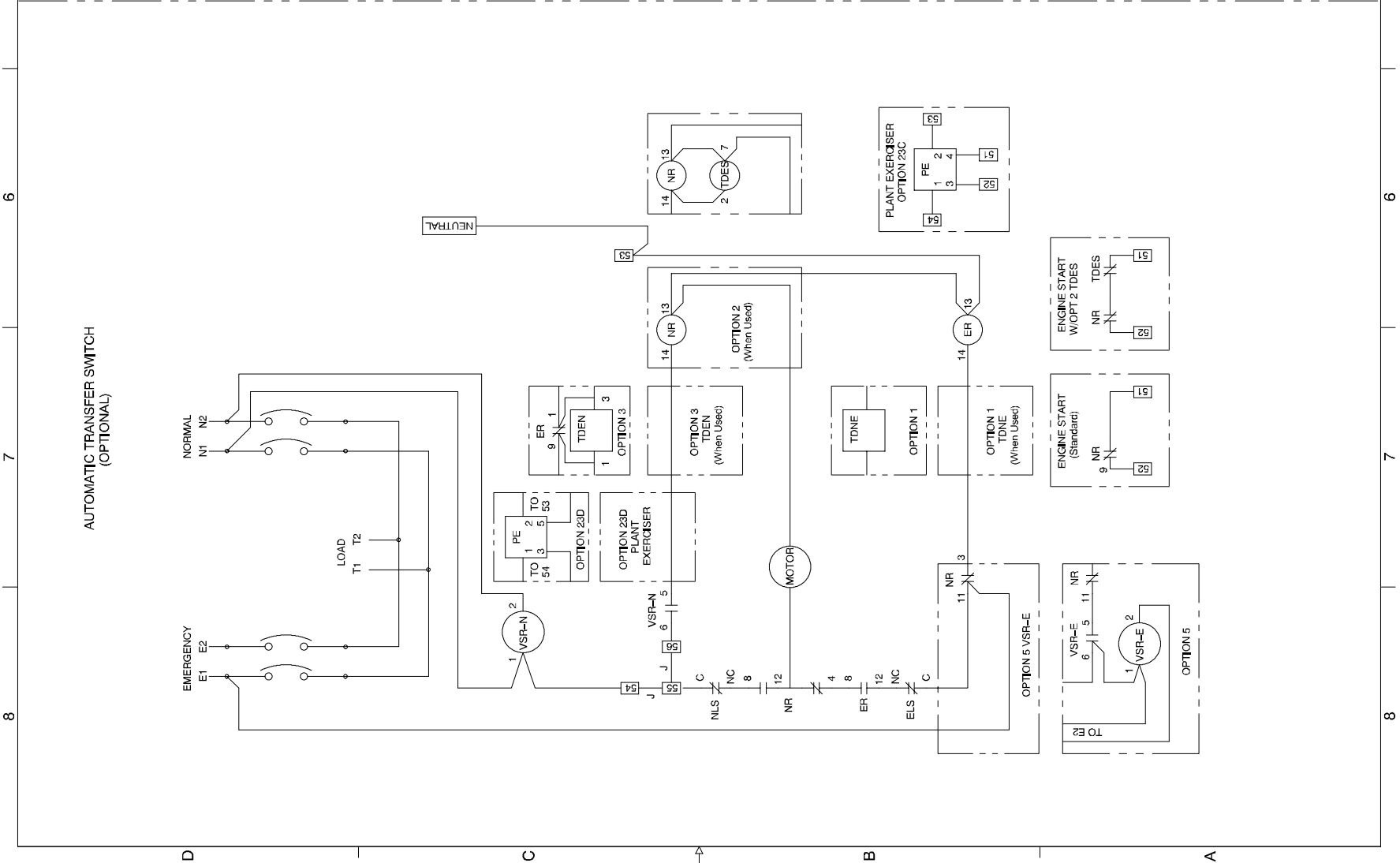
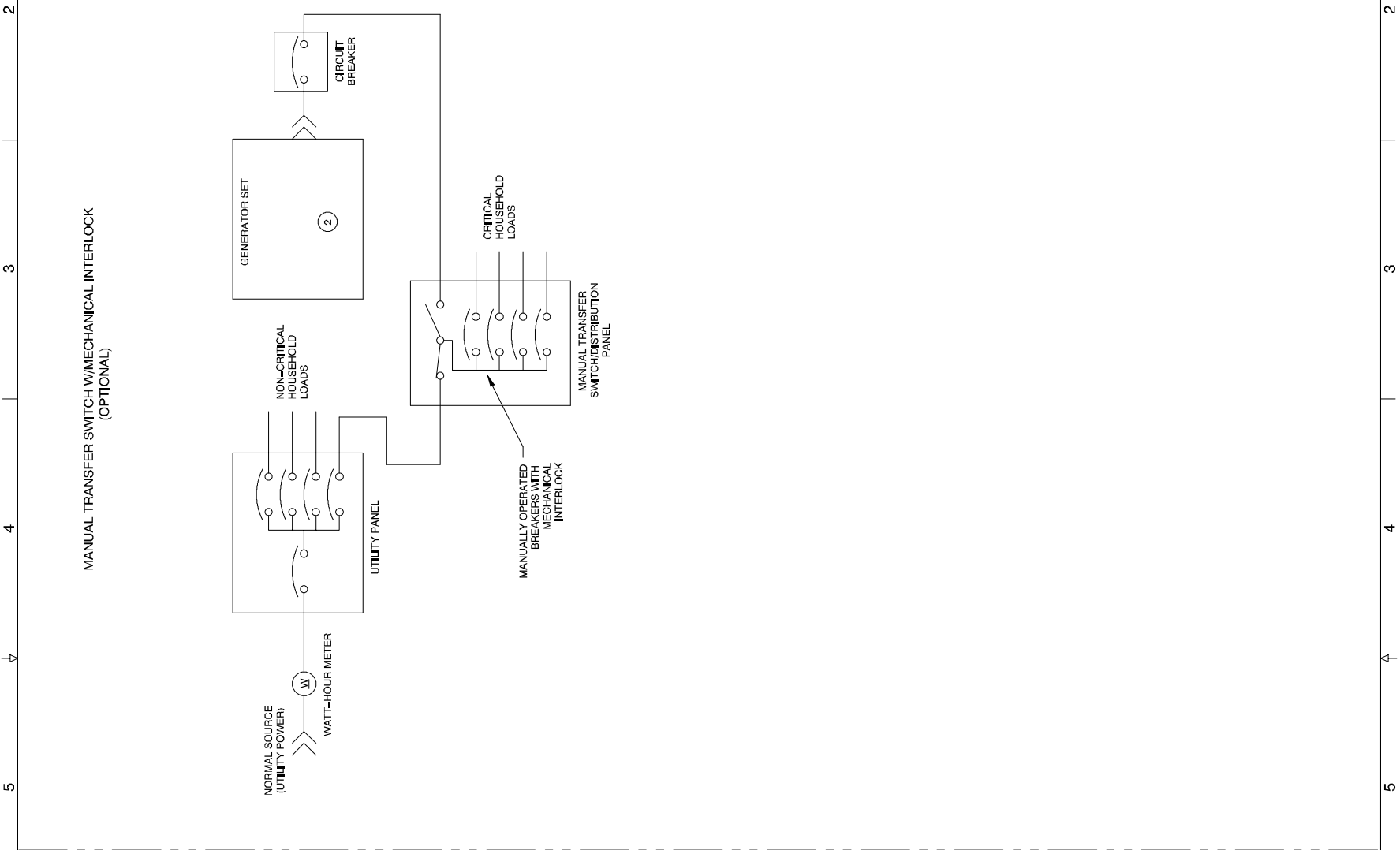
NO. OF SHEETS	TOTAL SHEETS	DATE	SCALE	TITLE
2	2	12-14-98	NONE	DIAGRAM, WIRING

Microprocessor Controller, Point-to-Point Wiring Diagram, 1ph, Sheet 2, 225085B-A



Relay Controller, Point-to-Point Wiring Diagram, 3ph, Sheet 1, 225088A-F

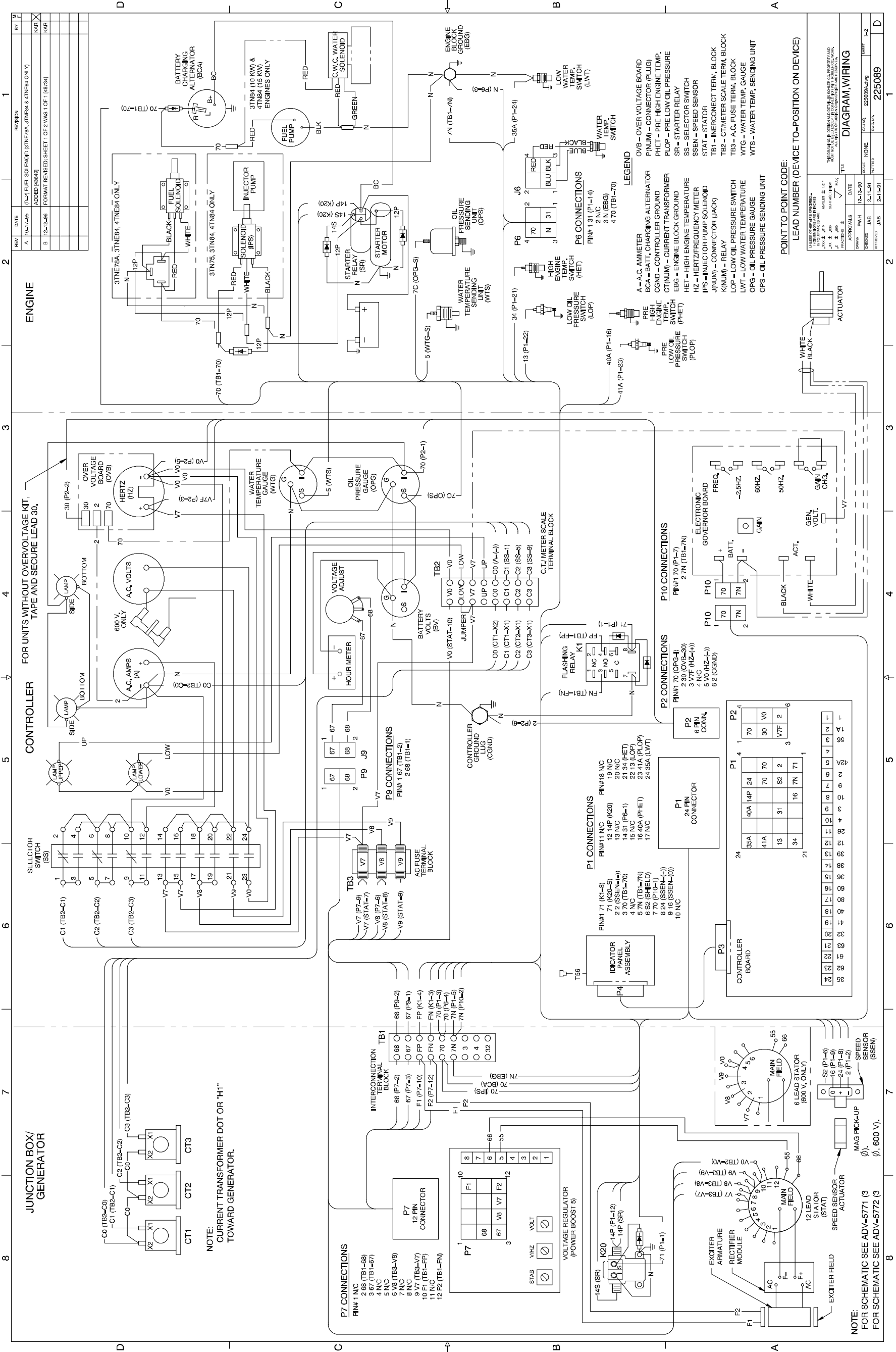
REV	DATE	REASON	BY
A	12-14-98	SHEET 2 OF 2 ADDED: AUTOMATIC & MANUAL TRANSFER SWITCH OPTIONS ADDED (48754)	KAR



REV	DATE	REASON	BY
A	12-14-98	SHEET 2 OF 2 ADDED: AUTOMATIC & MANUAL TRANSFER SWITCH OPTIONS ADDED (48754)	KAR

NO. OF SHEETS	TOTAL SHEETS	DATE	SCALE	TITLE
2	2	12-14-98	NONE	DIAGRAM, WIRING

Relay Controller, Point-to-Point Wiring Diagram, 3ph, Sheet 2, 225088B-A



REV	DATE	REASON	BY
A	10-1-85	(C-2) FUEL SOLENOID (3TNE78A, 3TNE84 & 4TNE84 ONLY) ADDRESS (3898)	KAR
B	12-13-86	FORMAT REARR. SHEET OF 2 HAS 1 OF 1 (6873)	KAR

DATE	SCALE	NO.	REV.	DATE	SCALE	NO.	REV.
10-1-85	1:1	225089A-1	1	10-1-85	1:1	225089A-1	1

DATE	SCALE	NO.	REV.	DATE	SCALE	NO.	REV.
10-1-85	1:1	225089A-1	1	10-1-85	1:1	225089A-1	1

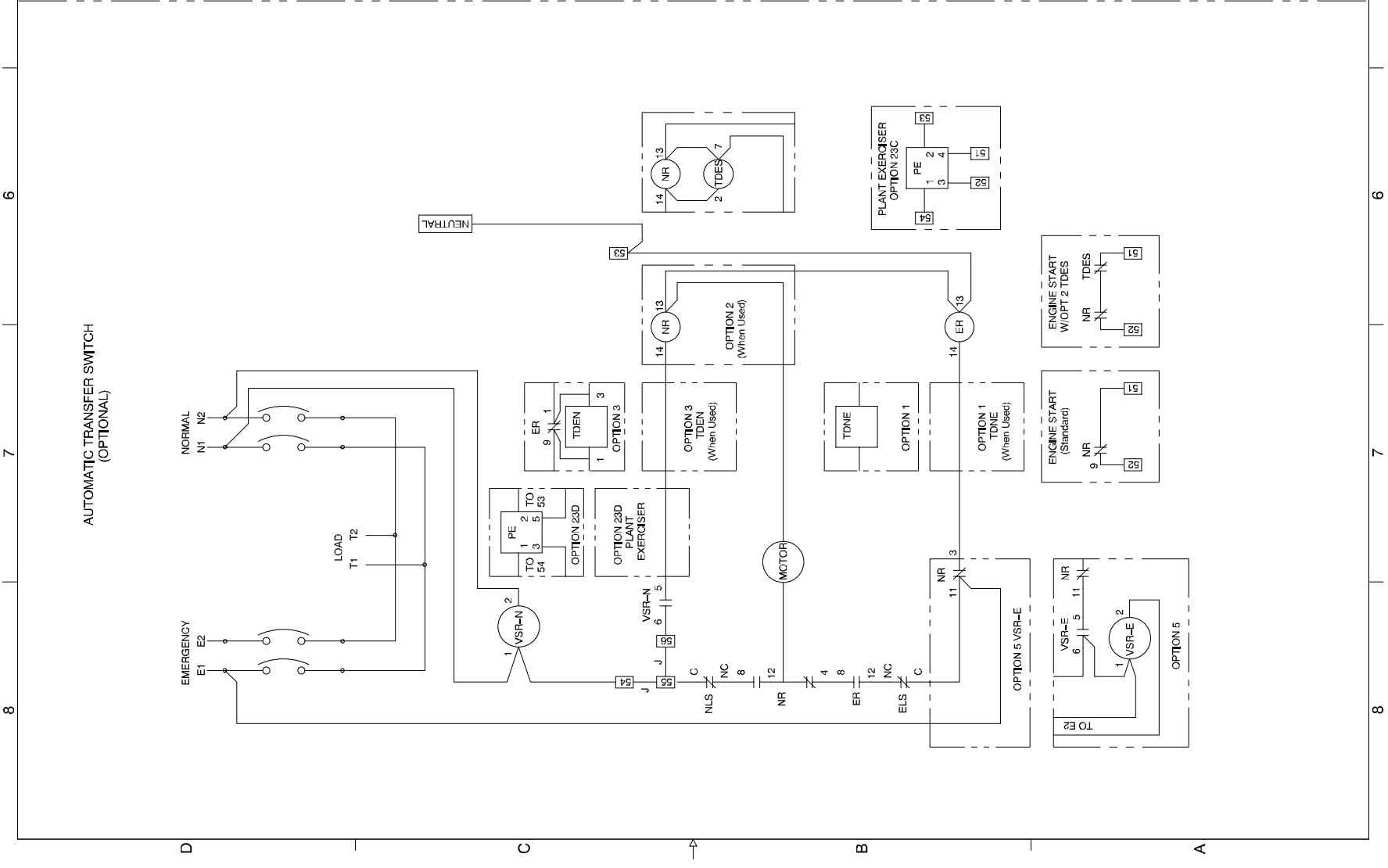
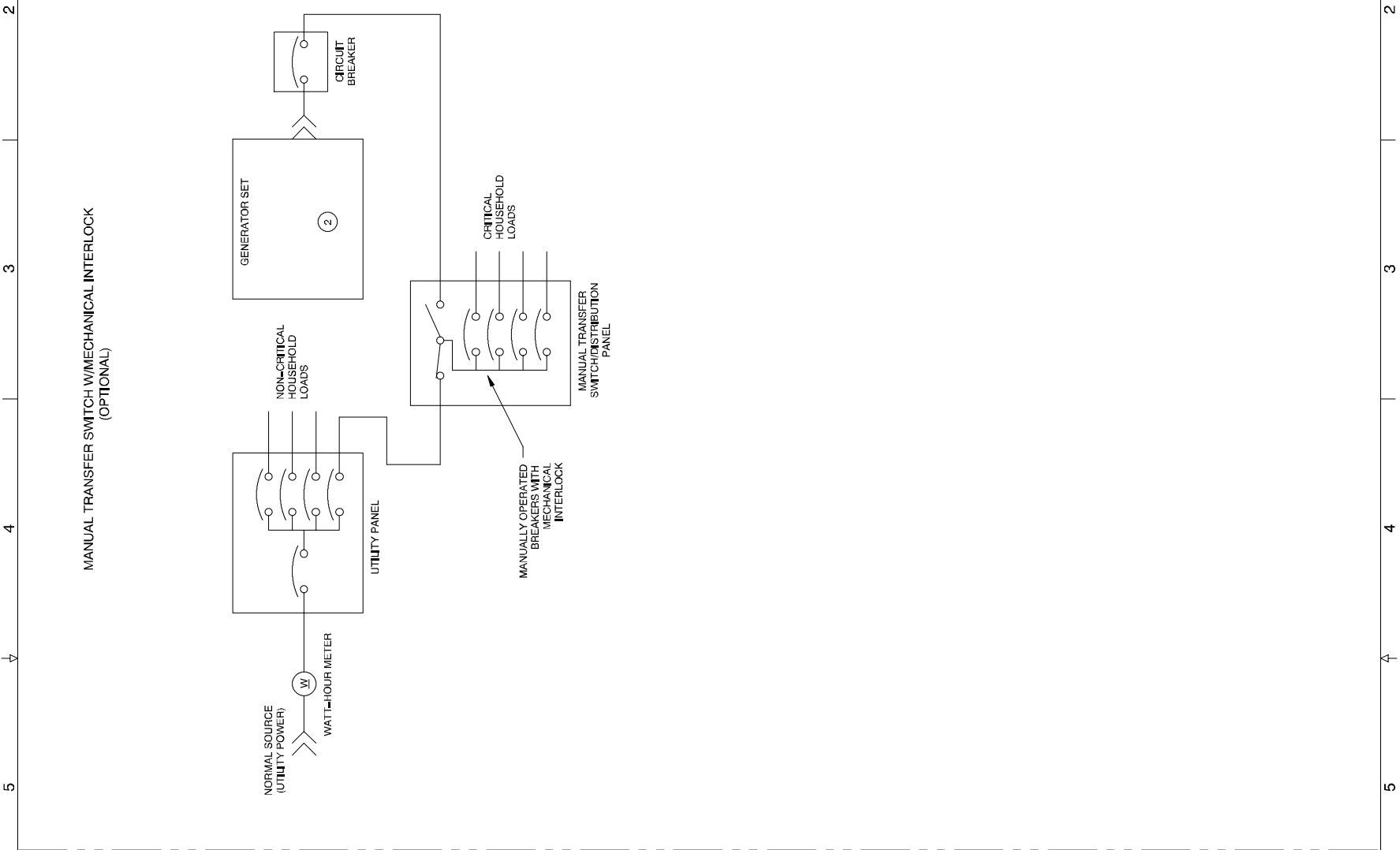
DATE	SCALE	NO.	REV.	DATE	SCALE	NO.	REV.
10-1-85	1:1	225089A-1	1	10-1-85	1:1	225089A-1	1

DATE	SCALE	NO.	REV.	DATE	SCALE	NO.	REV.
10-1-85	1:1	225089A-1	1	10-1-85	1:1	225089A-1	1

DATE	SCALE	NO.	REV.	DATE	SCALE	NO.	REV.
10-1-85	1:1	225089A-1	1	10-1-85	1:1	225089A-1	1

Microprocessor Controller, Point-to-Point Wiring Diagram, 3ph/600V, Sheet 1, 225089A-B

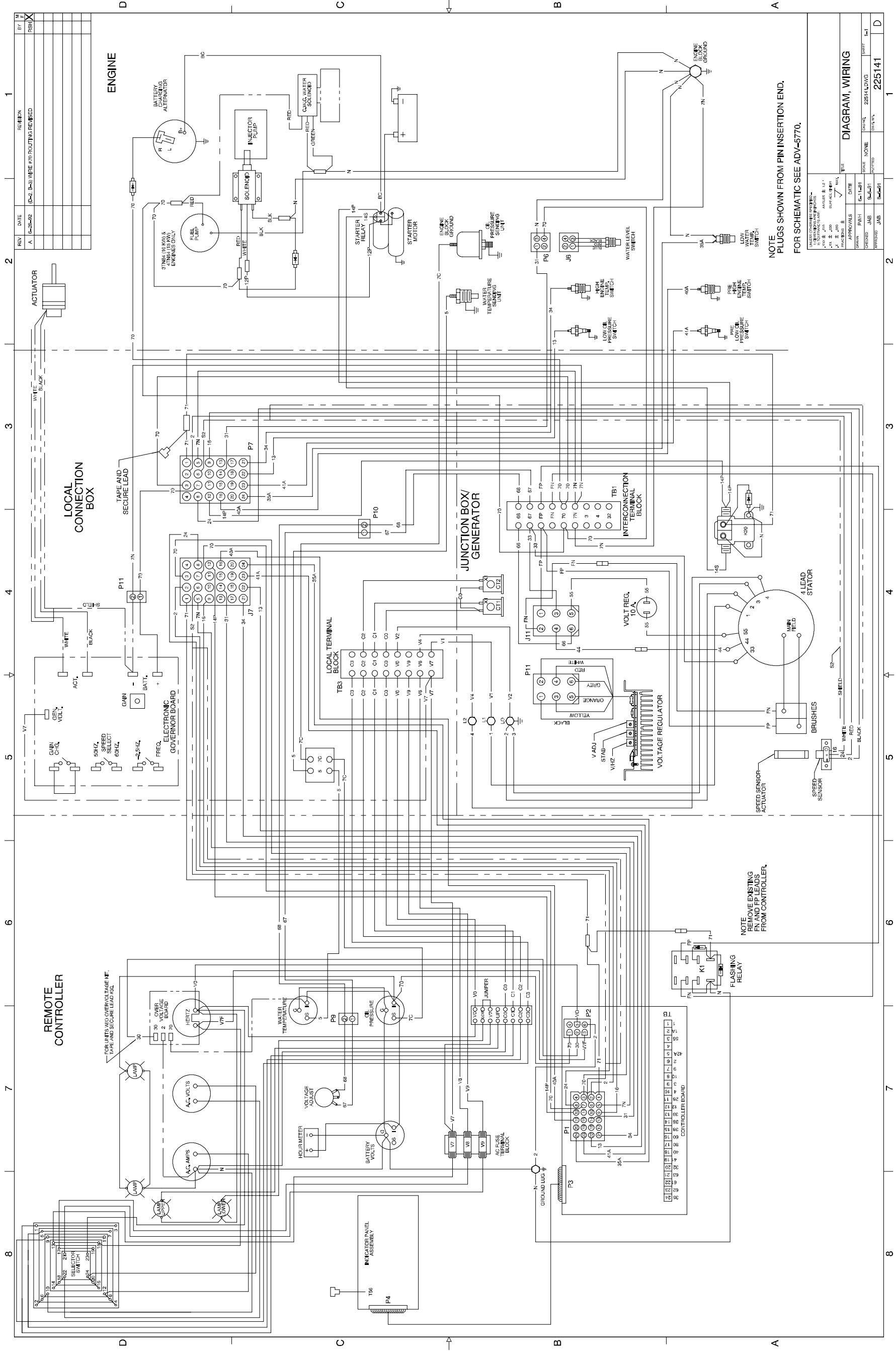
REV	DATE	REASON	BY
A	10-1-98	SHEET 2 OF 2 ADDED: AUTOMATIC & MANUAL TRANSFER SWITCH OPTIONS ADDED (48P3)	KHR



REV	DATE	REASON	BY
A	10-1-98	SHEET 2 OF 2 ADDED: AUTOMATIC & MANUAL TRANSFER SWITCH OPTIONS ADDED (48P3)	KHR

NO. OF SHEETS	TOTAL SHEETS	DATE	SCALE	TITLE
2	2	10-1-98	NONE	DIAGRAM, WIRING

Microprocessor Controller, Point-to-Point Wiring Diagram, 3ph/600V, Sheet 2, 225089B-A



NOTE
PLUGS SHOWN FROM PIN INSERTION END.
FOR SCHEMATIC SEE ADV-5770.

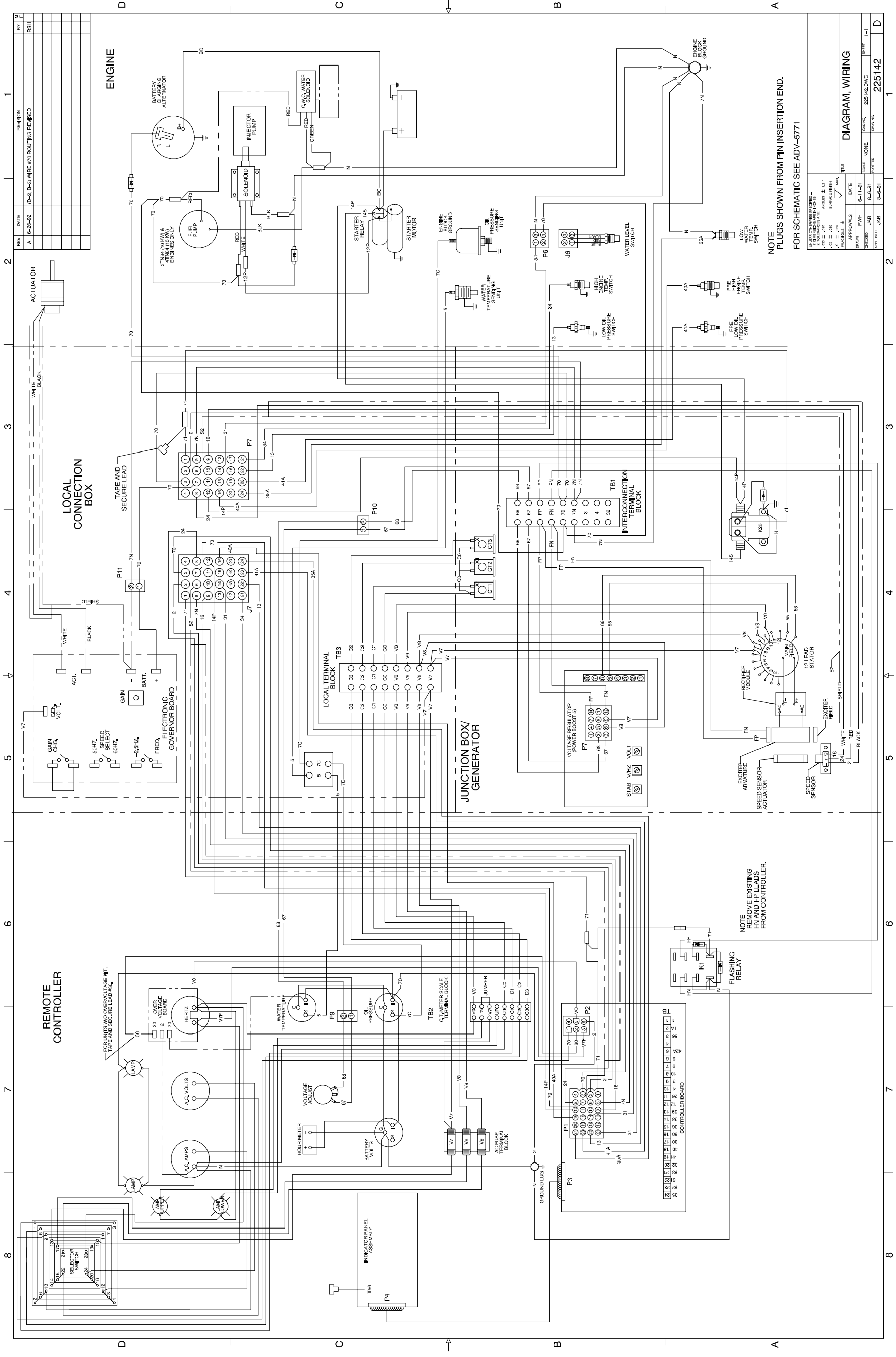
REV	DATE	REASON	BY
A	12-28-92	(D-2, 3-4) WIRE #70 ROUTING REVERSE	FSH

APPROVALS	DATE	SCALE	NO.	DATE	NO.
DESIGNED: JMB	12-28-92	1:1	225141-NG	1-1	1
DRAWN: JMB					
CHECKED: JMB					
APPROVED: JMB					

DIAGRAM, WIRING

225141

Microprocessor Controller, Point-to-Point Wiring Diagram, 1ph Remote Mounted, 225141-A



REV	DATE	REASON	BY
A	12-28-02	(D-2, 3-4) WIRE #70 ROUTING RECD	RSB

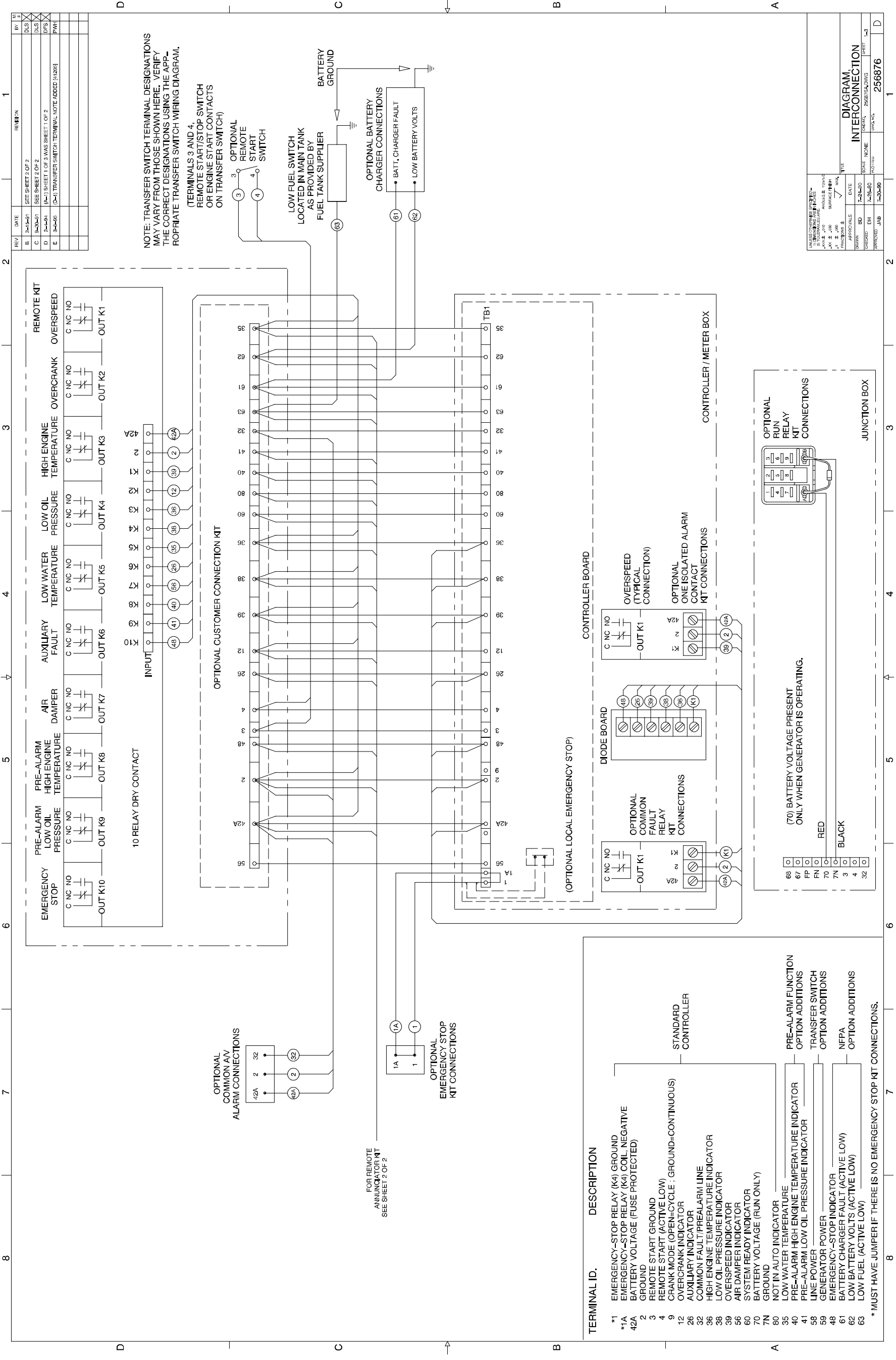
DATE	12-28-02
BY	RSB
APPROVALS	
DESIGNED	JAB
DRAWN	JAB
CHECKED	JAB
DATE	12-28-02
BY	RSB
APPROVALS	
DESIGNED	JAB
DRAWN	JAB
CHECKED	JAB

DATE	12-28-02
BY	RSB
APPROVALS	
DESIGNED	JAB
DRAWN	JAB
CHECKED	JAB

DATE	12-28-02
BY	RSB
APPROVALS	
DESIGNED	JAB
DRAWN	JAB
CHECKED	JAB

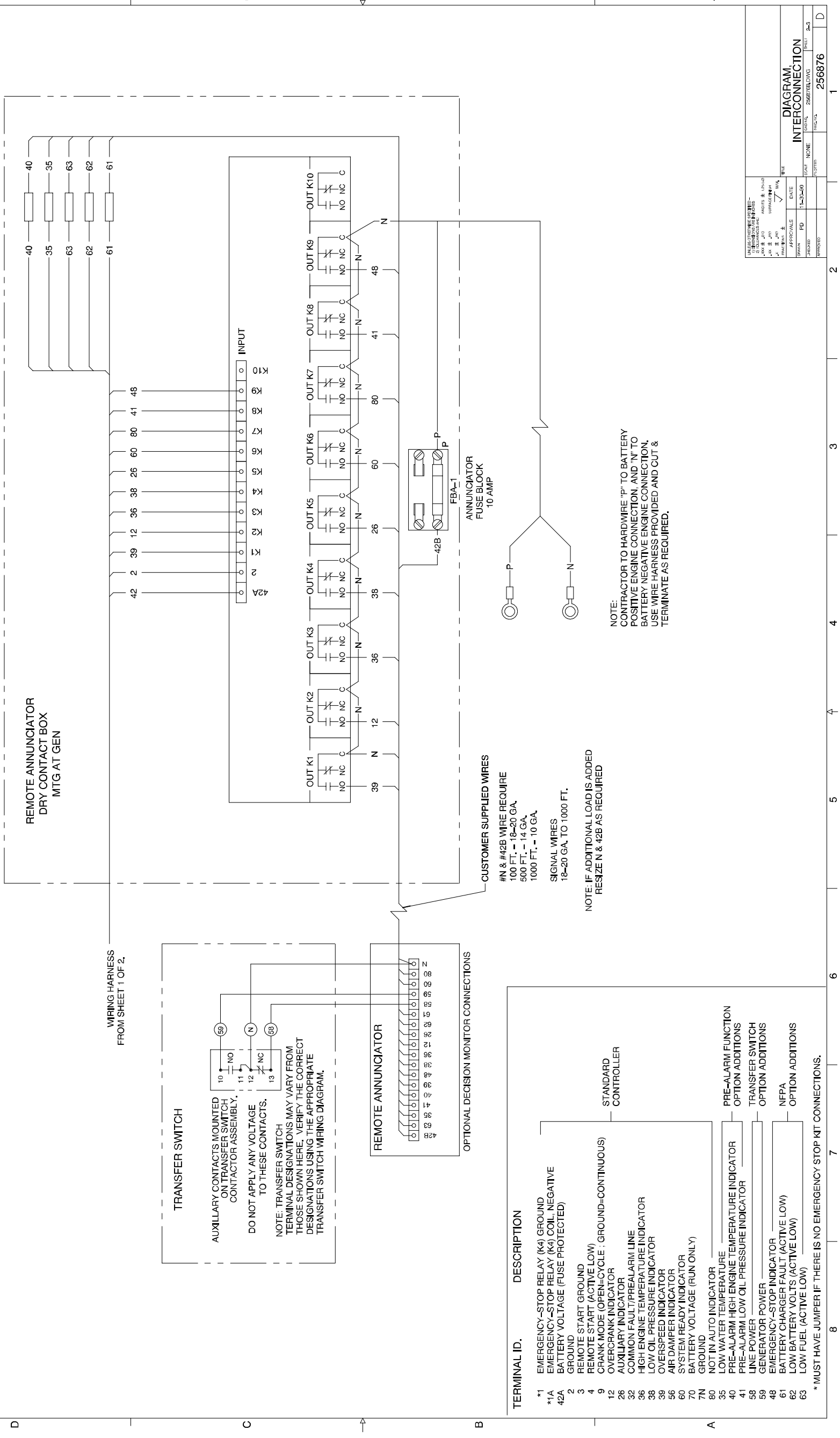
NOTE
PLUGS SHOWN FROM PIN INSERTION END.
FOR SCHEMATIC SEE ADV-5771

Microprocessor Controller, Point-to-Point Wiring Diagram, 3ph/600V Remote Mounted, 225142-A



Microprocessor Controller Accessory Connections, 256876A-E

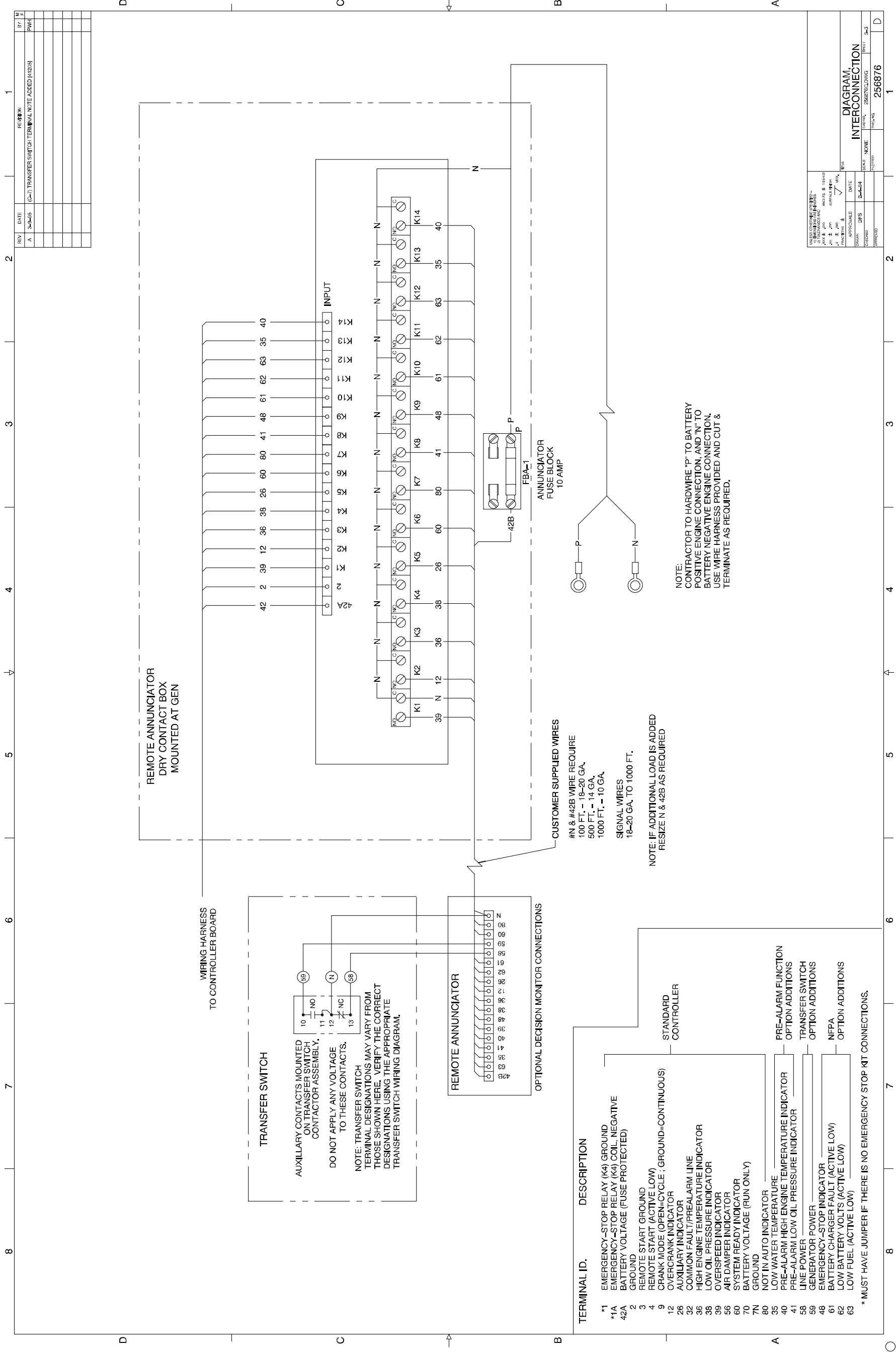
REV	DATE	REVISION	BY
C		(B-3) 42B WAS 42A; (B-4) ADDED ANNUNCIATOR FUSE BLOCK	D.S.
D		BLOCK WIRING & NOTE	D.S.
E		(A-1) SHEET 2 OF 3 WAS SHEET 2 OF 2	DPS
F		(C-7) TRANSFER SWITCH TERMINAL NOTE ADDED (4/10/08)	PAW



TERMINAL ID.	DESCRIPTION
*1	EMERGENCY-STOP RELAY (K4) GROUND
*1A	EMERGENCY-STOP RELAY (K4) COIL, NEGATIVE
42A	BATTERY VOLTAGE (FUSE PROTECTED)
2	GROUND
3	REMOTE START (ACTIVE LOW)
4	CRANK MODE (OPEN-CYCLE ; GROUND=CONTINUOUS)
9	OVERCRANK INDICATOR
12	AUXILIARY INDICATOR
26	COMMON FAULT/PRE-ALARM LINE
32	HIGH ENGINE TEMPERATURE INDICATOR
36	LOW ENGINE TEMPERATURE INDICATOR
38	OVERSPEED INDICATOR
39	AIR DAMPER INDICATOR
56	SYSTEM READY INDICATOR
60	BATTERY VOLTAGE (RUN ONLY)
7N	GROUND
80	NOT IN AUTO INDICATOR
35	LOW WATER TEMPERATURE
40	PRE-ALARM HIGH ENGINE TEMPERATURE INDICATOR
41	PRE-ALARM LOW OIL PRESSURE INDICATOR
58	LINE POWER
59	GENERATOR POWER
48	EMERGENCY-STOP INDICATOR
61	BATTERY CHARGER FAULT (ACTIVE LOW)
62	LOW BATTERY VOLTS (ACTIVE LOW)
63	LOW FUEL (ACTIVE LOW)

TERMINAL ID.	DESCRIPTION
1	EMERGENCY-STOP RELAY (K4) GROUND
2	GROUND
3	REMOTE START (ACTIVE LOW)
4	CRANK MODE (OPEN-CYCLE ; GROUND=CONTINUOUS)
9	OVERCRANK INDICATOR
12	AUXILIARY INDICATOR
26	COMMON FAULT/PRE-ALARM LINE
32	HIGH ENGINE TEMPERATURE INDICATOR
36	LOW ENGINE TEMPERATURE INDICATOR
38	OVERSPEED INDICATOR
39	AIR DAMPER INDICATOR
56	SYSTEM READY INDICATOR
60	BATTERY VOLTAGE (RUN ONLY)
7N	GROUND
80	NOT IN AUTO INDICATOR
35	LOW WATER TEMPERATURE
40	PRE-ALARM HIGH ENGINE TEMPERATURE INDICATOR
41	PRE-ALARM LOW OIL PRESSURE INDICATOR
58	LINE POWER
59	GENERATOR POWER
48	EMERGENCY-STOP INDICATOR
61	BATTERY CHARGER FAULT (ACTIVE LOW)
62	LOW BATTERY VOLTS (ACTIVE LOW)
63	LOW FUEL (ACTIVE LOW)

Microprocessor Controller, Remote Annunciator Kit, 10-Relay, 256876B-E



Microprocessor Controller, Remote Annunciator Kit, 14-Relay, 256876C-A

TP-5715 11/97a

© 1997, 2004 by Kohler Co. All rights reserved.

KOHLER[®] POWER SYSTEMS

KOHLER CO. Kohler, Wisconsin 53044
Phone 920-565-3381, Fax 920-459-1646
For the nearest sales/service outlet in the
US and Canada, phone 1-800-544-2444
KohlerPowerSystems.com

Kohler Power Systems
Asia Pacific Headquarters
7 Jurong Pier Road
Singapore 619159
Phone (65) 6264-6422, Fax (65) 6264-6455