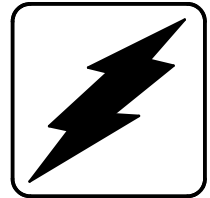


Wiring Diagrams

Industrial Generator Sets



Models:

6.5RMY

Controllers:

Decision-Maker[®] 3, 5-Light
Relay

KOHLER[®]
POWER SYSTEMS

ISO 9001
KOHLER
GENERATORS
INTERNATIONALLY REGISTERED
U.S.A. Plant ISO Registered

TP-5815 7/96b

Introduction

This manual contains the wiring diagrams for the 6.5RMY models equipped with either the microprocessor controller or the relay controller. Use the wiring diagram cross reference to determine the correct wiring diagrams.

All information in this publication represents data available at time of printing. Kohler Co. reserves the right to change this literature and the products represented without incurring obligation.

Service Assistance

For sales and service in the U.S.A. and Canada check the yellow pages of the telephone directory under the heading GENERATORS– ELECTRIC for an authorized service distributor/dealer or call 1-800-544-2444.

For sales and service outside the U.S.A. and Canada, contact your local distributor.

For further information or questions, contact the company directly at:

KOHLER CO., Kohler, Wisconsin 53044 U.S.A.
Phone: 920-565-3381
Fax: 920-459-1646 (U.S.A. Sales)
920-459-1614 (International)

To ensure supply of correct parts or information, make note of the following identification numbers in the spaces provided:

GENERATOR SET

MODEL, SPEC, and SERIAL numbers are found on the nameplate attached to the generator set.

Model No. _____

Specification No. _____

Serial No. _____

GENERATOR SET ACCESSORIES

An alternate nameplate inside the junction box identifies factory-installed generator set accessories.

Accessory Nos. _____

ENGINE

The engine serial number is found on the engine nameplate.

Engine Serial No. _____

Wiring Diagrams

At the time of print, this manual applied to the model numbers and specification (spec) numbers following. On occasion this manual may be applicable to specs not listed below, such as when similar new specs are created prior to the updated reprint or in cases where the manual is deemed an acceptable substitute for a manual under development.

Use the Wiring Diagram Cross Reference to determine the correct version number for a given model number and spec number. Find that version number in the Controller Wiring Diagrams Reference and determine the wiring diagrams by choosing the type of controller on the unit. Wiring diagram pages are numbered and arranged in numerical sequence by the numeric part of the alphanumeric part number.

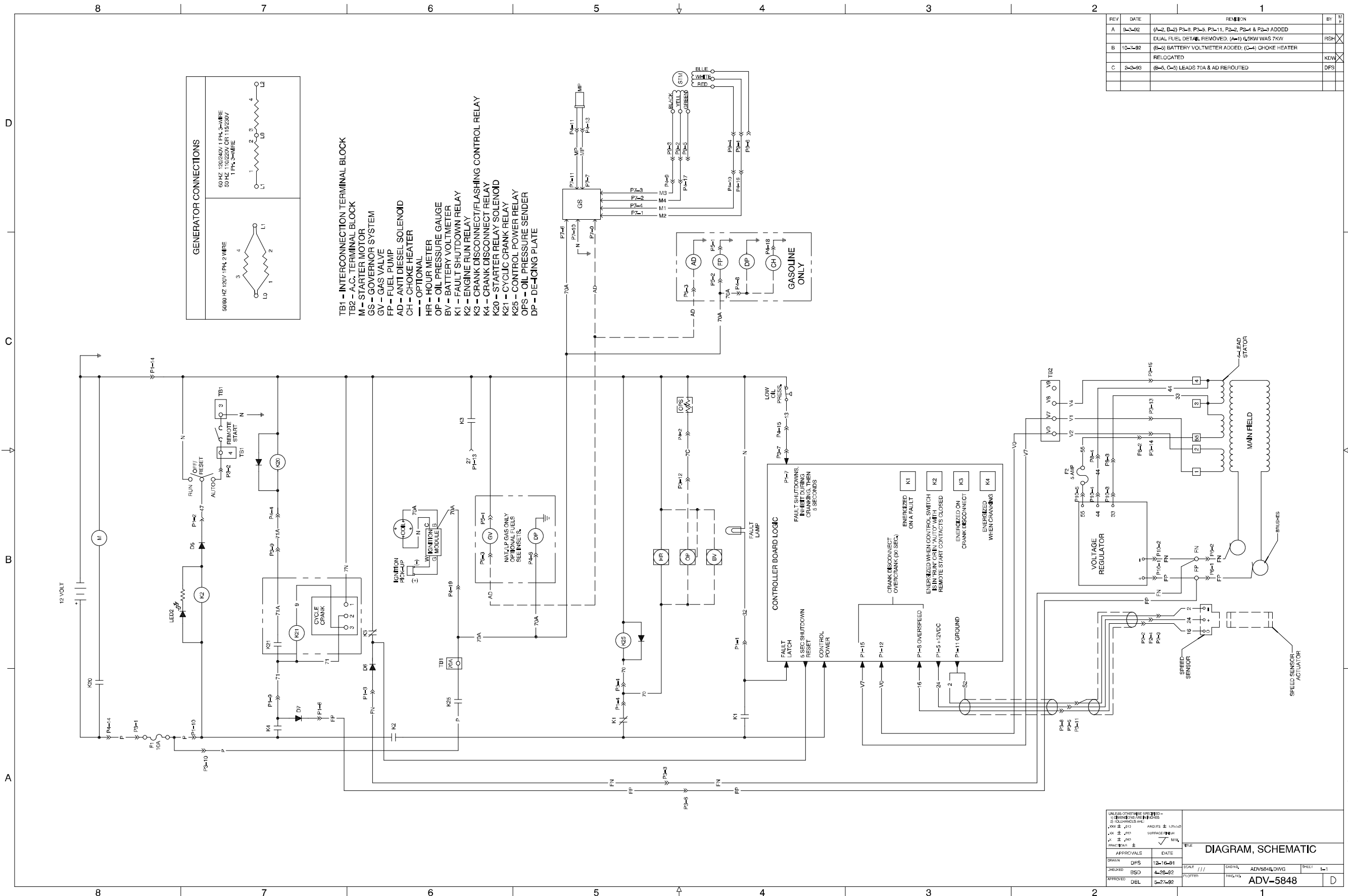
Wiring Diagram Cross Reference

Model No.	Spec. No.	Wiring Diagram Version No.
6.5RMY	140116	1
6.5RMY	140117-	2

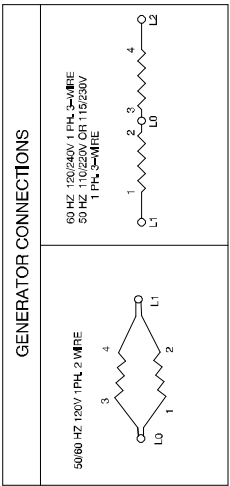
Controller Wiring Diagrams Reference

Controller Description (6.5RMY)	Version 1	Pg	Version 2	Pg
5-Light Microprocessor Controller				
Point-to-Point Wiring Diagram				
1ph	227770-	7	227770-C	8
3ph			227896-A	10
Schematic Diagram				
1ph	ADV-5883-B	1	ADV-5883-B	1
3ph			ADV-5943-	3
Microprocessor Controller Accessory Connections				
Accessories			255828A-M	12
Remote Annunciator Kit				
10-Relay			255828B-L	13
14-Relay			255828C-C	14
Relay Controller				
Point-to-Point Wiring Diagram				
1ph	227459-F	6	227853-B	9
3ph			227897-A	11
Schematic Diagram				
1ph	ADV-5848-C	4	ADV-5898-A	5
3ph			ADV-5942-	2

NOTE: Version 1 does not have battery charging
Version 2 has battery charging



REV	DATE	REVISION	BY	CHK
A	3-3-82	(A-2, B-2) P3-8, P3-5, P3-11, P3-2, P2-4 & P2-3 ADDED	RSH	X
B	10-1-82	DUAL FUEL DETAIL REMOVED. (A-1) 6.9KW WAS 7KW	KDW	X
C	2-2-83	(B-5) BATTERY VOLT METER ADDED; (C-4) CHOKE HEATER RELOCATED	DFS	X
		(B-5, C-5) LEADS 70A & AD REROUTED		



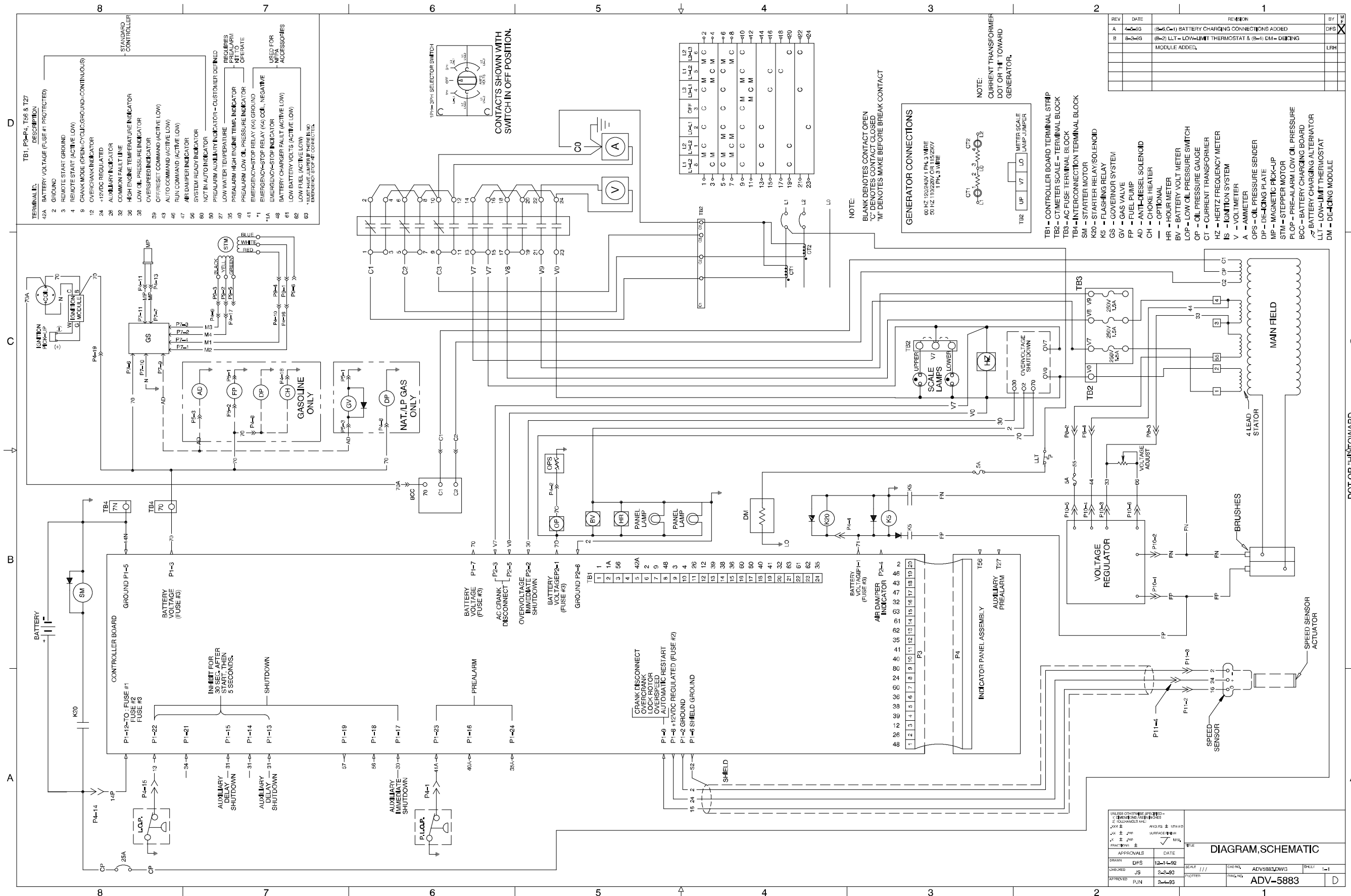
- TB1 - INTERCONNECTION TERMINAL BLOCK**
TB2 - A.C. TERMINAL BLOCK
M - STARTER MOTOR
GS - GOVERNOR SYSTEM
GV - GAS VALVE
FP - FUEL PUMP
AD - ANTI DIESEL SOLENOID
CH - CHOKE HEATER
HR - HOUR METER
OP - OIL PRESSURE GAUGE
BV - BATTERY VOLT METER
K1 - FAULT SHUTDOWN RELAY
K2 - CRANK DISCONNECT/FLASHING CONTROL RELAY
K3 - CRANK DISCONNECT RELAY
K4 - STARTER RELAY SOLENOID
K20 - CYCLIC CRANK RELAY
K21 - CONTROL POWER RELAY
OPS - OIL PRESSURE SENDER
DP - DE-ICING PLATE

UNLESS OTHERWISE SPECIFIED -
 DIMENSIONS ARE IN MILLIMETERS AND DECIMALS ARE IN MILLIMETERS.
 ANGLES ± 1.0°/0.2°
 SURFACE FINISH
 MAX
 MIN

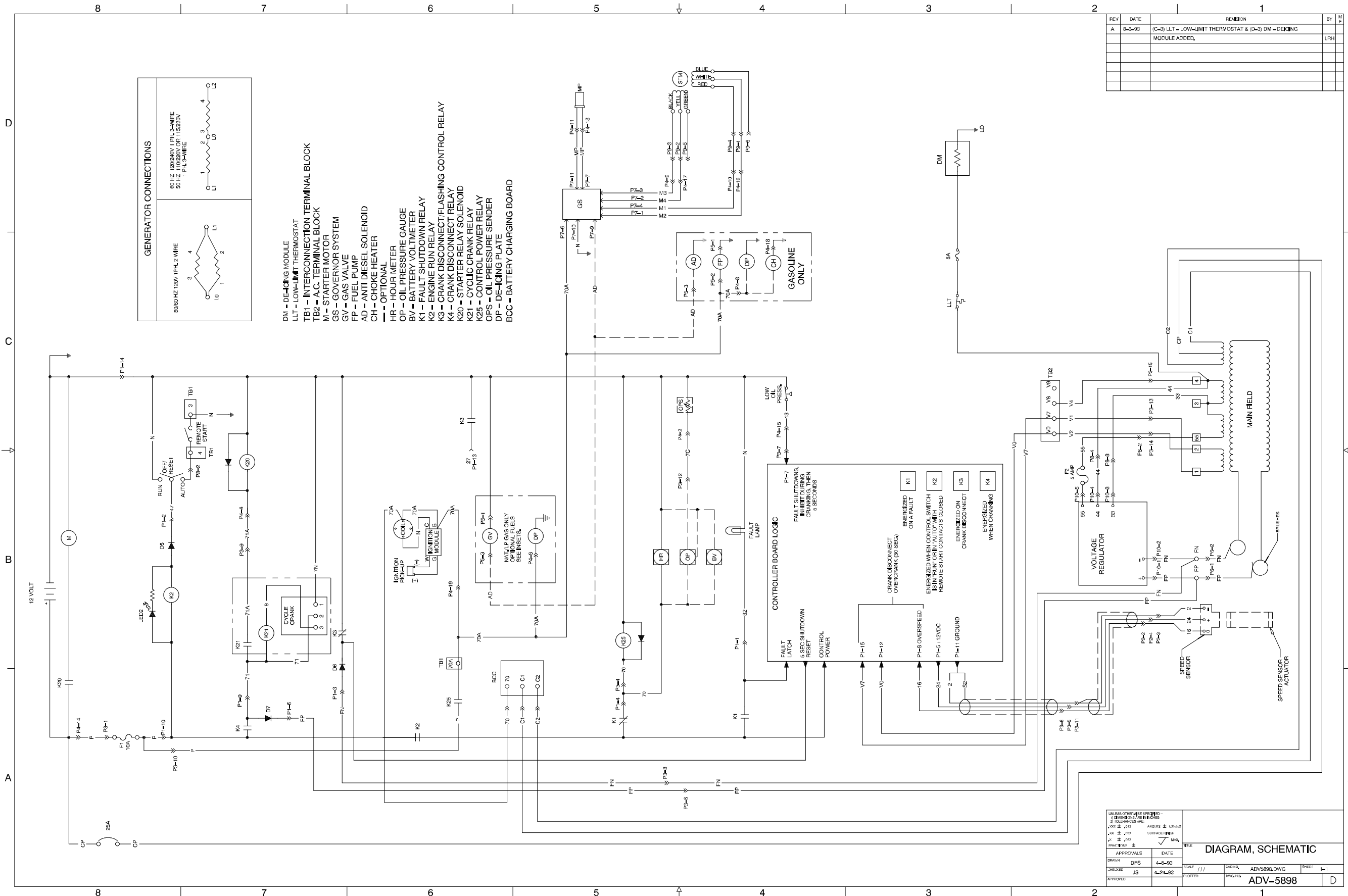
APPROVALS	DATE	TITLE
DFS	12-16-81	DIAGRAM, SCHEMATIC
BSO	4-28-82	
DEL	5-27-82	

SCALE: ADV5848/DWG
 SHEET: L-1
 ADV-5848
 D

Relay Controller, Schematic Diagram, 1 Phase, ADV-5848-C



Microprocessor Controller, Schematic Diagram, 1 Phase, ADV-5883-B



REV	DATE	REVISION	BY	CHK
A	8-3-83	(C-3) LLT - LOW-LIMIT THERMOSTAT & (D-3) DM - DE-ICEING MODULE ADDED.	LRH	

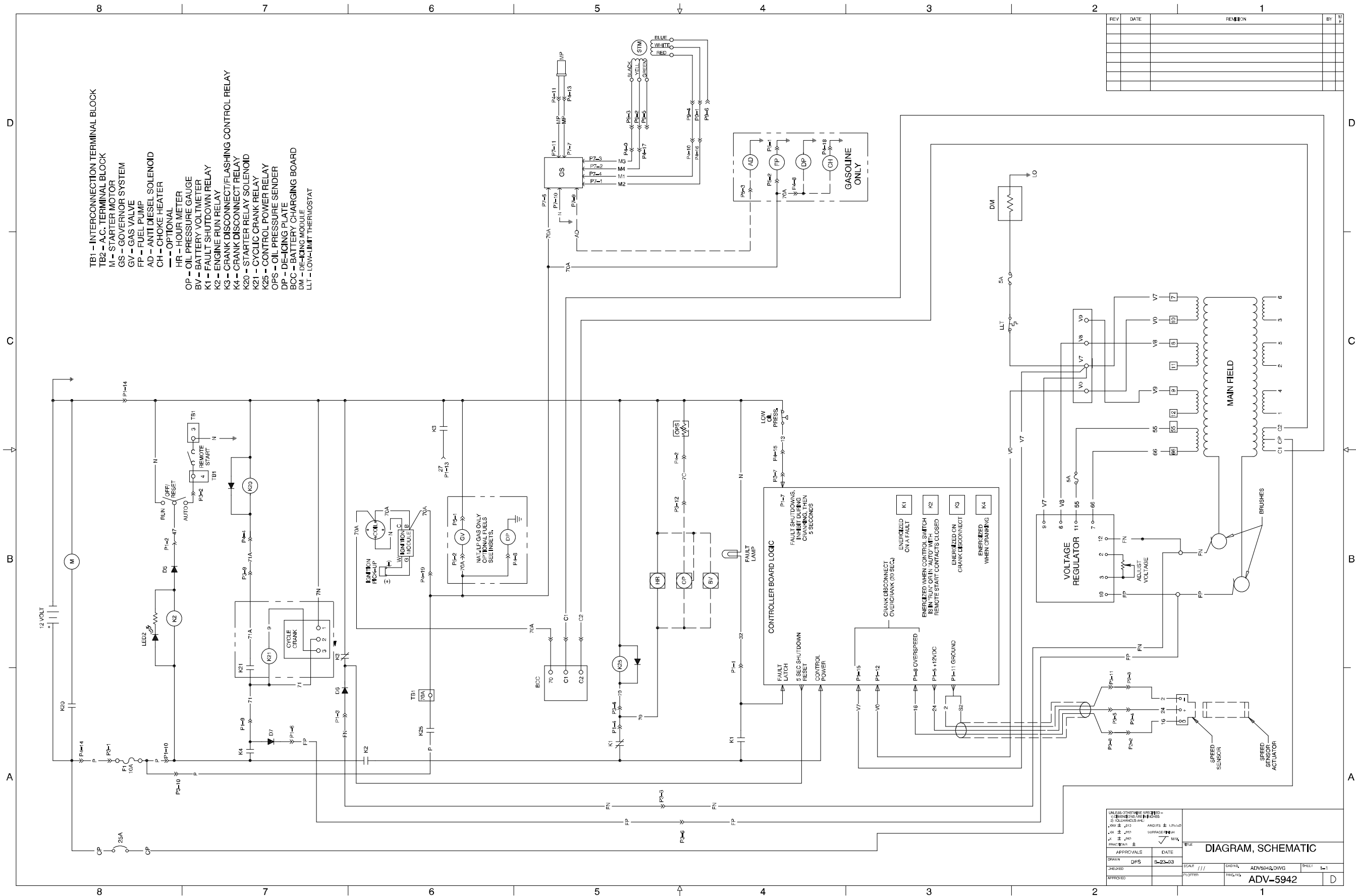
APPROVALS		DATE	SCALE	CAD FILE	REV. NO.	REV. DATE	REV. BY
DESIGNED	DPS	4-25-83	1/1	ADV5898.DWG	1		
CHECKED	JS	4-24-83					
APPROVED							

UNLESS OTHERWISE SPECIFIED - DIMENSIONS ARE IN INCHES AND DECIMALS ARE TO FOLLOW. SURFACE FINISH SHALL BE AS SHOWN.

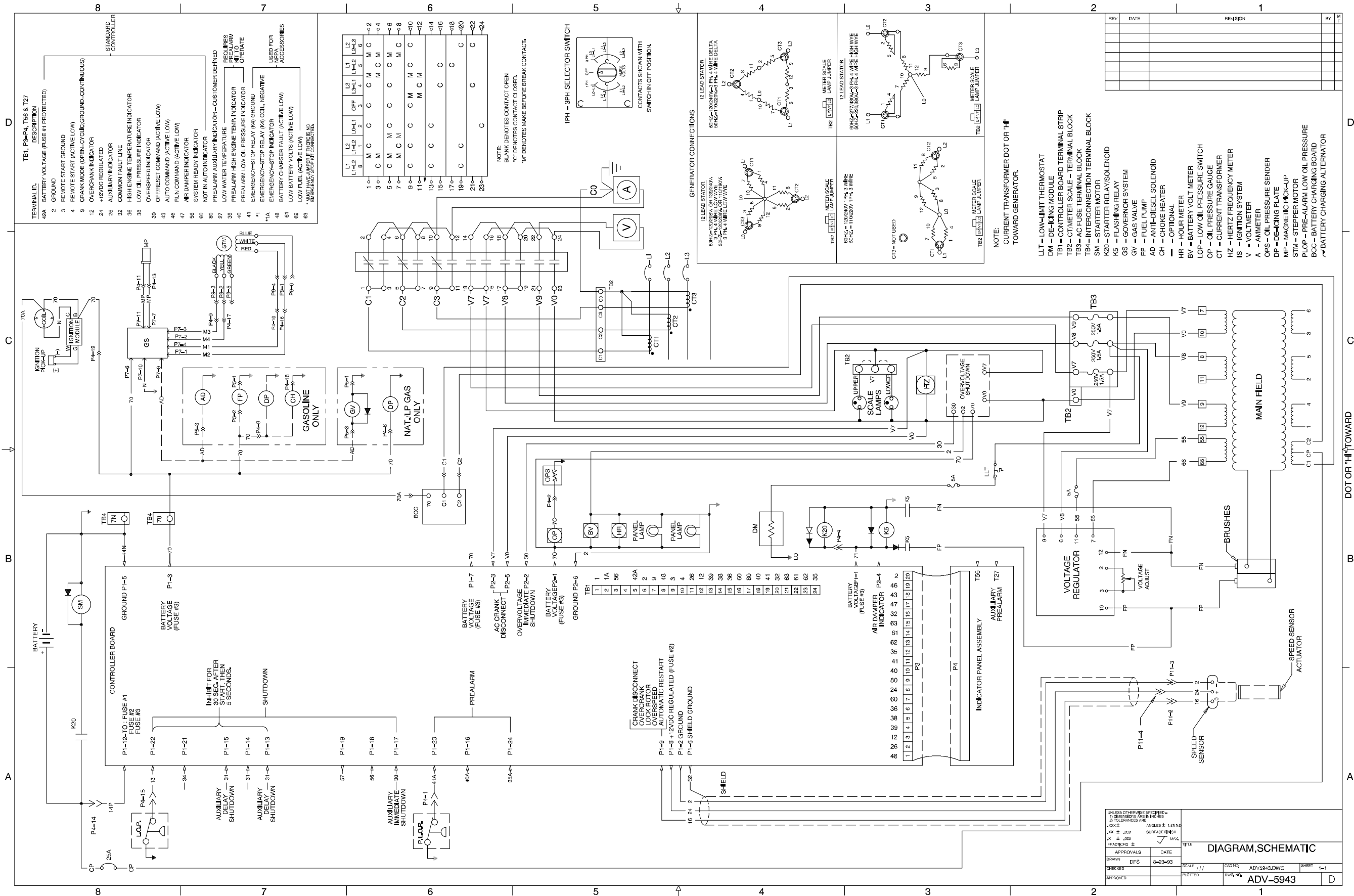
DIAGRAM, SCHEMATIC

ADV-5898

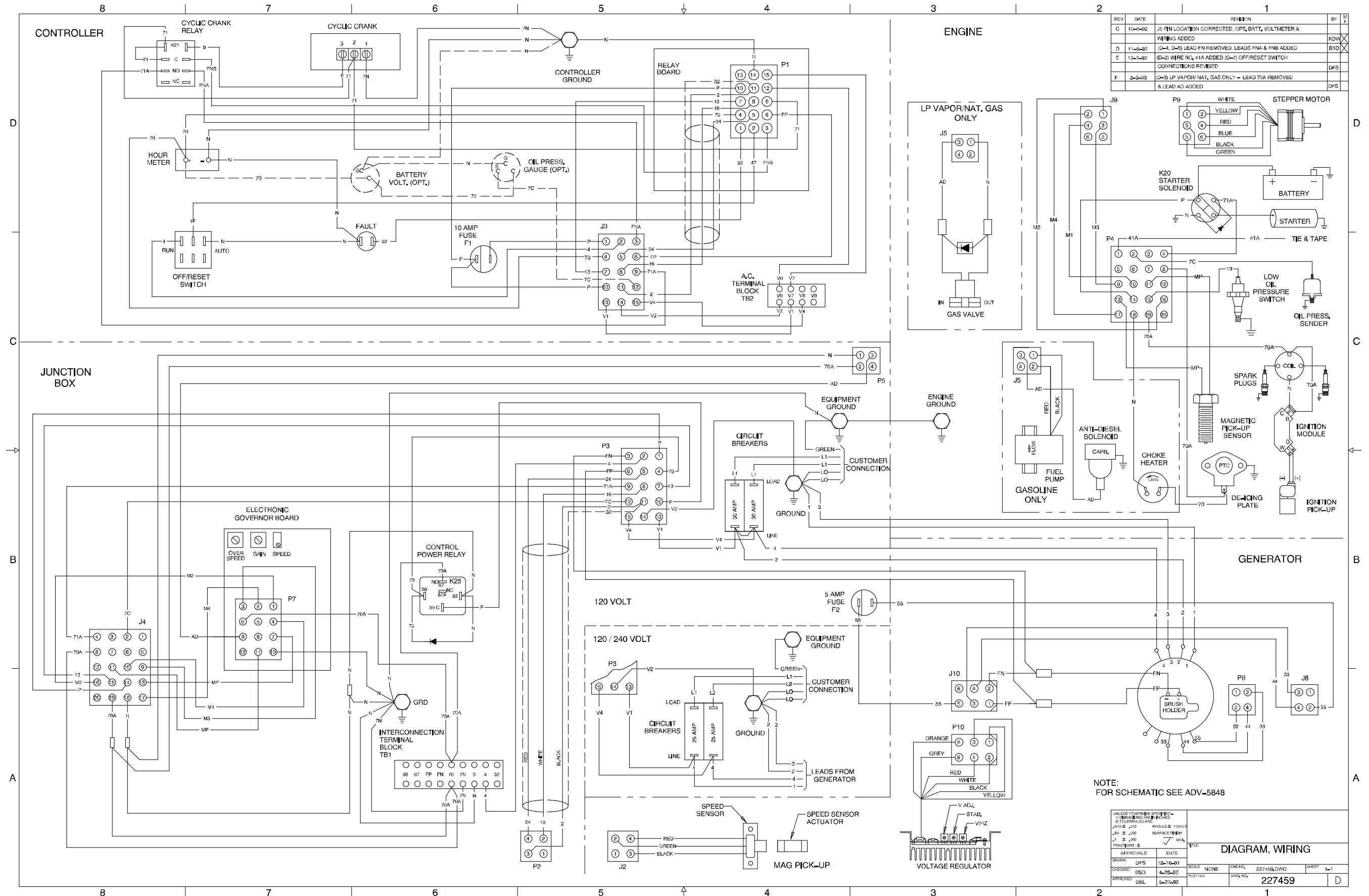
Relay Controller, Schematic Diagram, 1 Phase, ADV-5898-A



Relay Controller, Schematic Diagram, 3 Phase, ADV-5942-



Microprocessor Controller, Schematic Diagram, 3 Phase, ADV-5943-

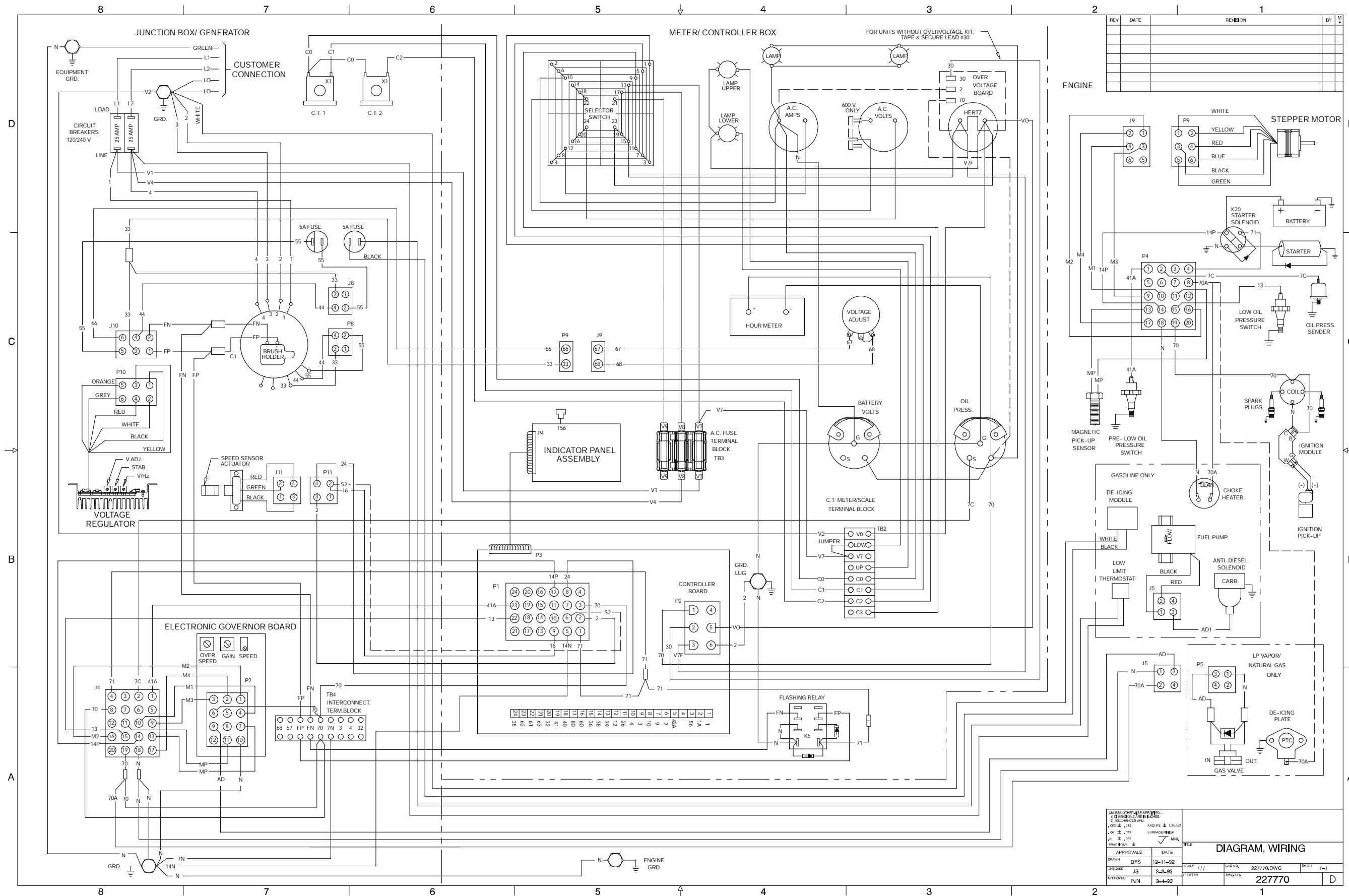


REV	DATE	REVISION	BY
G	10-6-92	J5 PIN LOCATION CORRECTED. OPT. BATT. VOLTMETER & WIRING ADDED	KDW
D	11-5-92	(D-1, D-5) LEAD FN REMOVED. LEADS FNA & FNB ADDED	BSD
E	12-7-92	(E-2) WIRE NO. 41A ADDED (E-7) OFF/RESET SWITCH CONNECTIONS REVISED	DPS
F	2-2-93	(F-3) LP VAPOR/NAT. GAS ONLY - LEAD 70A REMOVED & LEAD AD ADDED	DPS

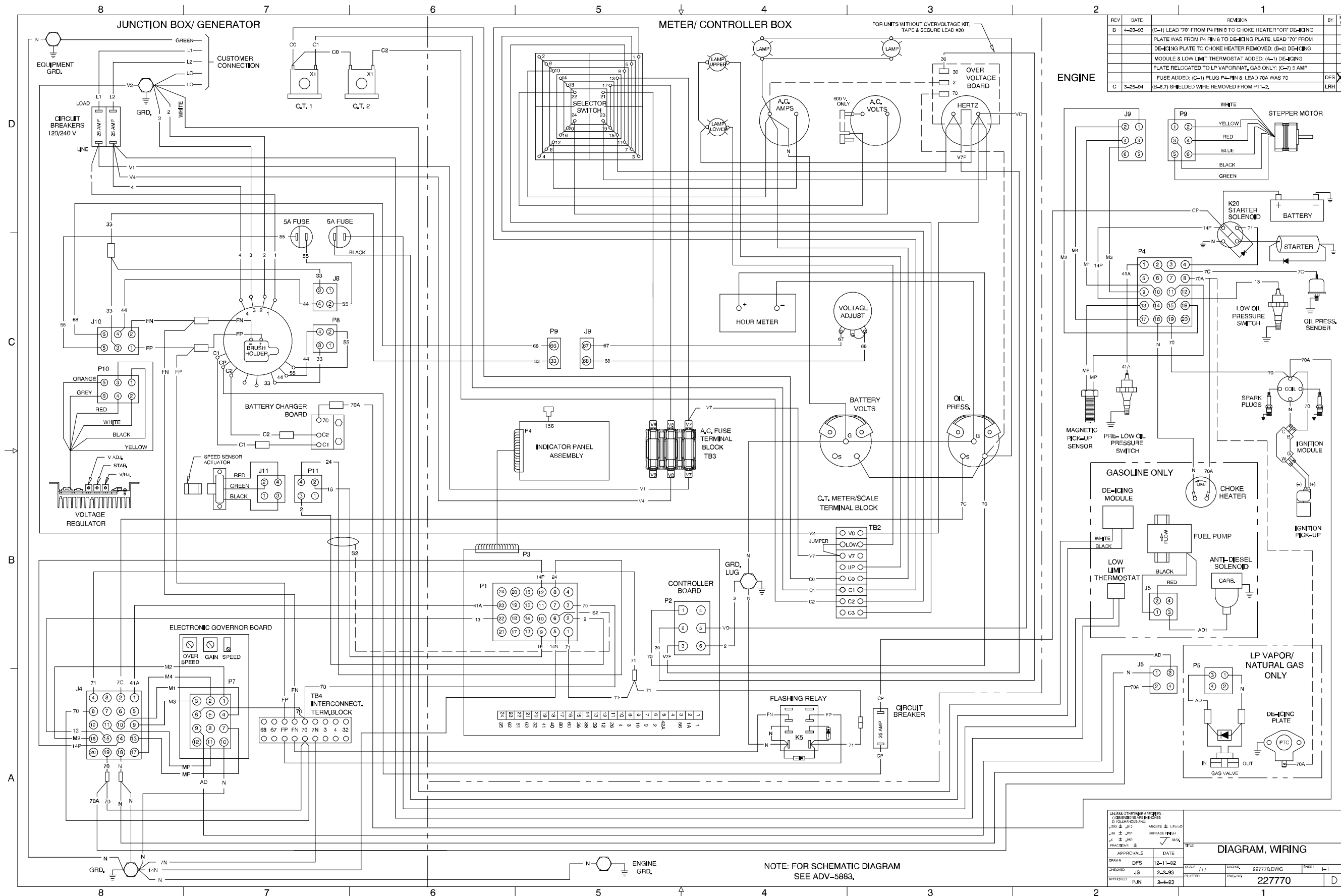
NOTE:
FOR SCHEMATIC SEE ADV-5848

UNLESS OTHERWISE SPECIFIED - DIMENSIONS ARE IN INCHES TOLERANCES ARE: FRACTIONS ± .005 SURFACE FINISH DECIMALS ± .000 SURFACE FINISH FRACTIONS ± .005 SURFACE FINISH		TITLE	
APPROVALS		DATE	
DRAWN	DPS	12-16-91	SCALE NONE
CHECKED	BSD	4-28-92	DWG. NO. 227459/DWG
APPROVED	DEL	5-27-92	SHEET 1-1
227459		D	

Relay Controller, Point-to-Point Wiring Diagram, 1 Phase, 227459-F



Microprocessor Controller, Point-to-Point Wiring Diagram, 1 Phase, 227770

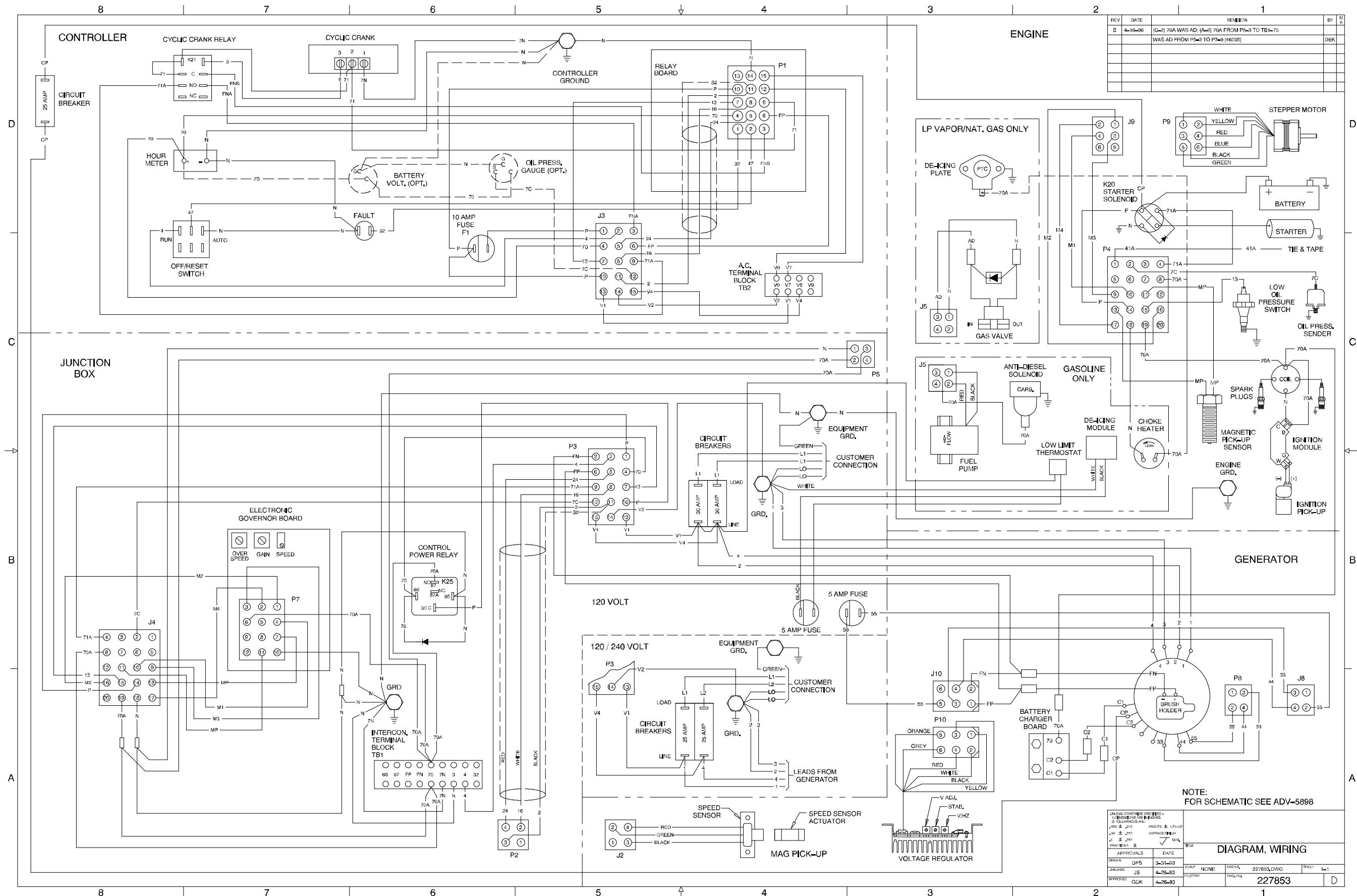


REV	DATE	REVISION	BY
B	4-25-93	(C-1) LEAD 70" FROM P4 PIN 8 TO CHOKE HEATER OR DE-ICING PLATE WAS FROM P4 PIN 8 TO DE-ICING PLATE. LEAD 70" FROM DE-ICING PLATE TO CHOKE HEATER REMOVED. (B-2) DE-ICING MODULE & LOW LIMIT THERMOSTAT ADDED; (A-1) DE-ICING PLATE RELOCATED TO LP VAPOR/NAT. GAS ONLY; (C-7) 5 AMP FUSE ADDED; (C-1) PLUG P4-PIN 8 LEAD 70A WAS 70 (B-6,7) SHIELDED WIRE REMOVED FROM P1-L2	DFS
C	3-25-94		LRH

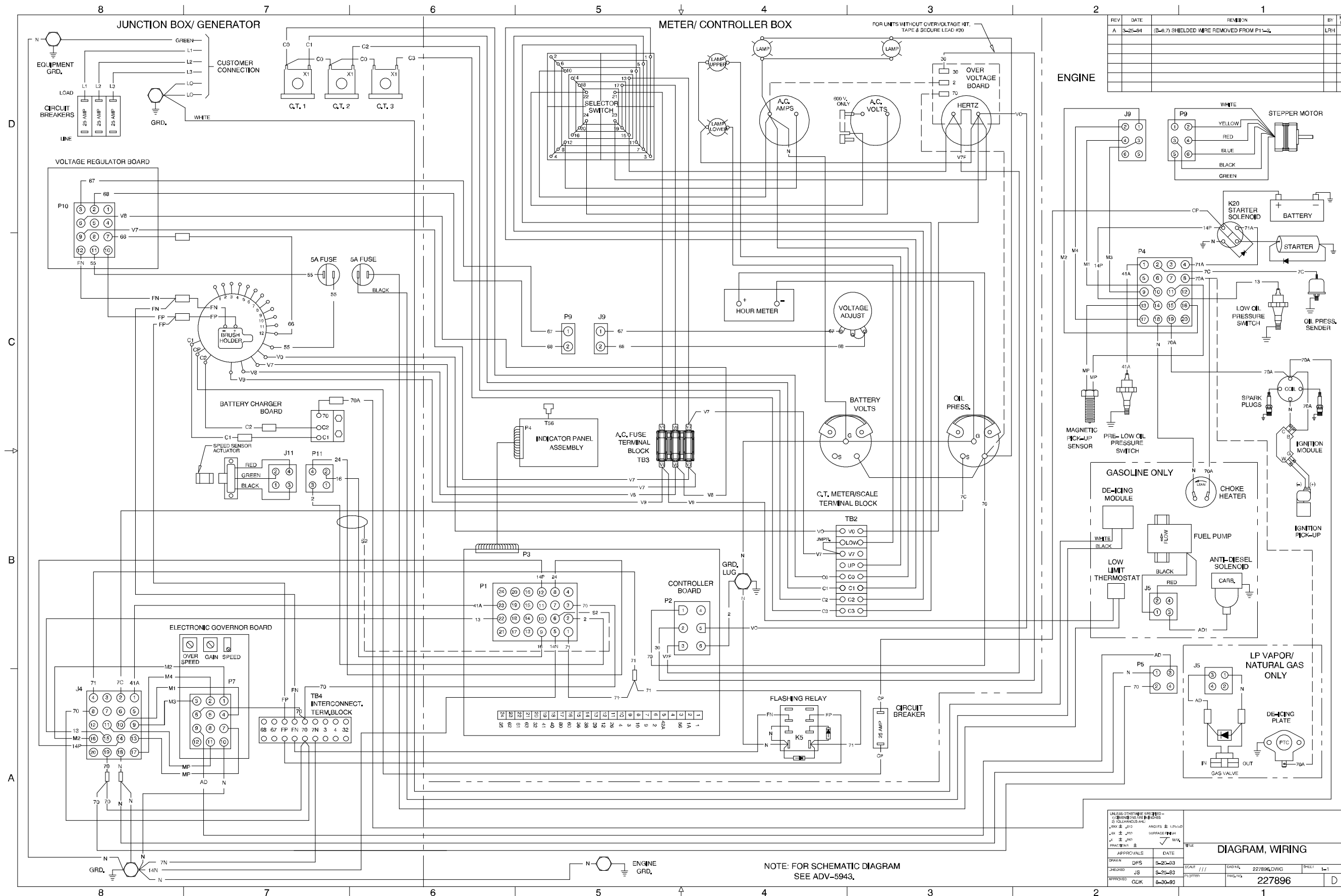
UNLESS OTHERWISE SPECIFIED - DIMENSIONS ARE IN INCHES			
DIMENSIONS ARE:		ANGLES ± 1/2° UNLESS OTHERWISE SPECIFIED	
± .015	± .010	± .015	± .010
± .005	± .003	± .005	± .003
± .002	± .001	± .002	± .001
APPROVALS	DATE	TITLE	
DESIGNED: DFS	12-11-92	DIAGRAM, WIRING	
DRAWN: JS	2-2-93	SCALE: 1/1	CAD FILE: 22777A.DWG
CHECKED: JLN	3-4-93	PLOTTED:	SHEET: L-1
APPROVED: PUN		FILE NO: 227770	D

NOTE: FOR SCHEMATIC DIAGRAM SEE ADV-5883.

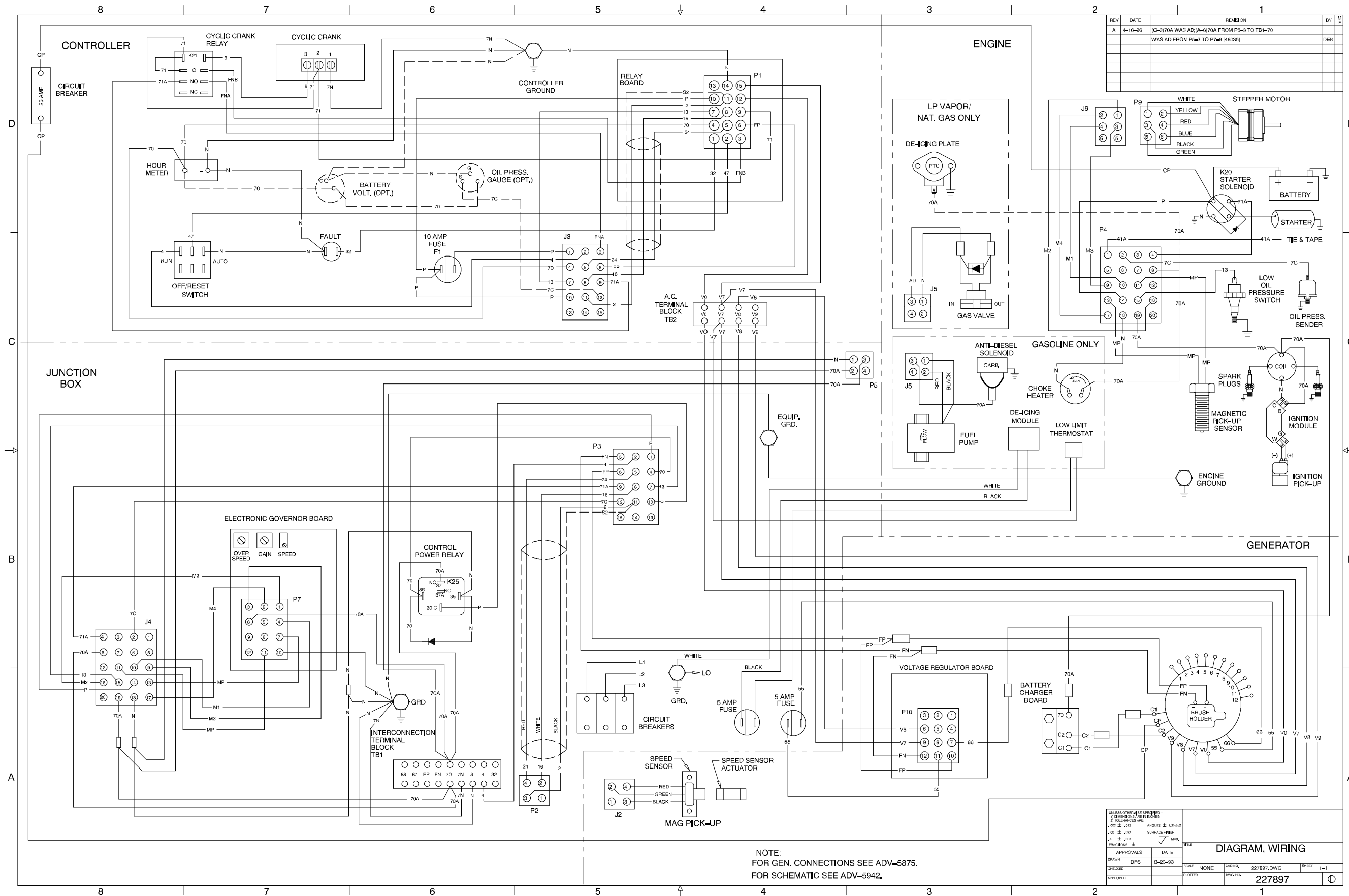
Microprocessor Controller, Point-to-Point Wiring Diagram, 1 Phase, 22770-C



Relay Controller, Point-to-Point Wiring Diagram, 1 Phase, 227853-B



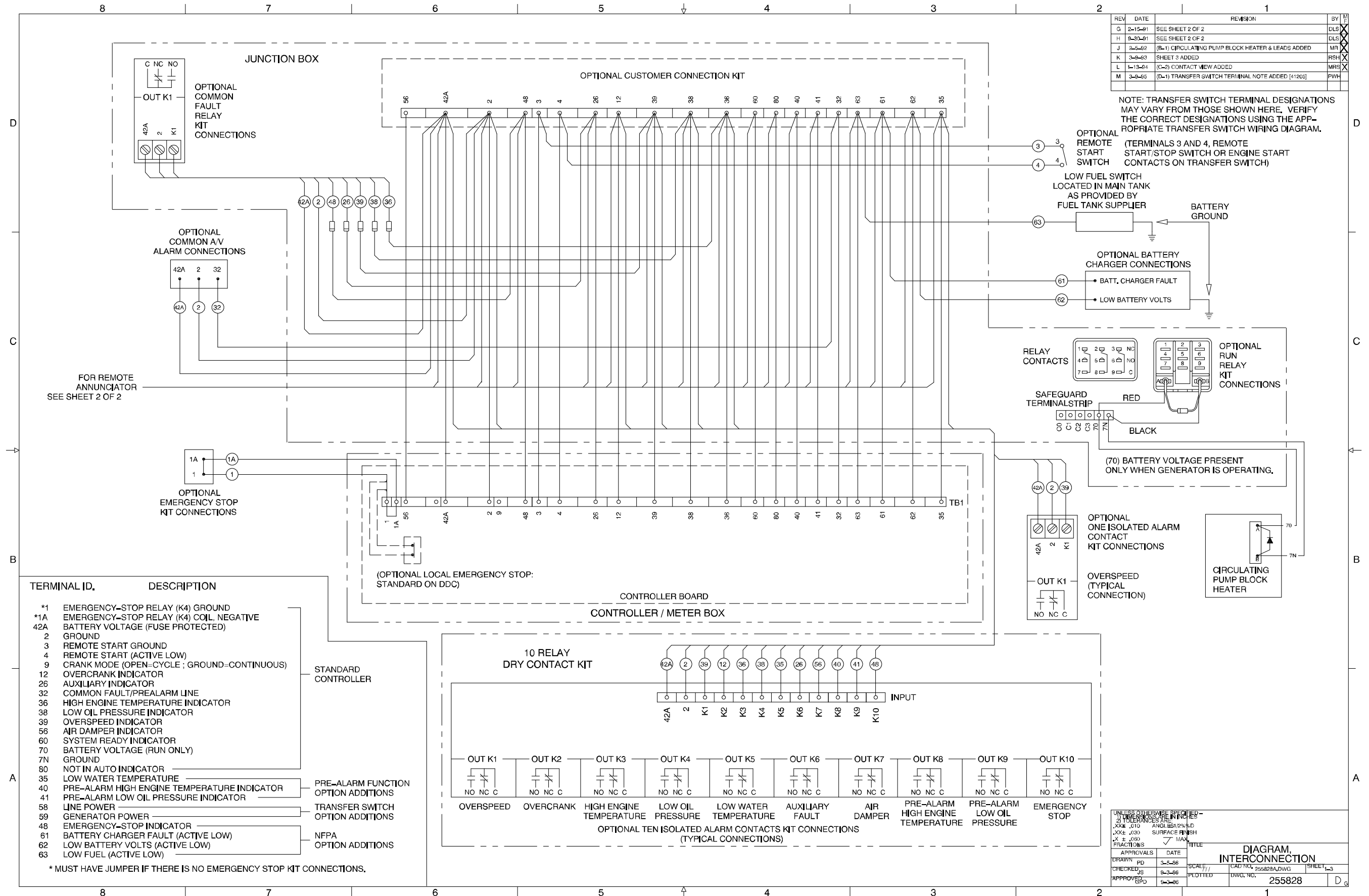
Microprocessor Controller, Point-to-Point Wiring Diagram, 3 Phase, 227896-A



NOTE:
FOR GEN. CONNECTIONS SEE ADV-5875.
FOR SCHEMATIC SEE ADV-5942.

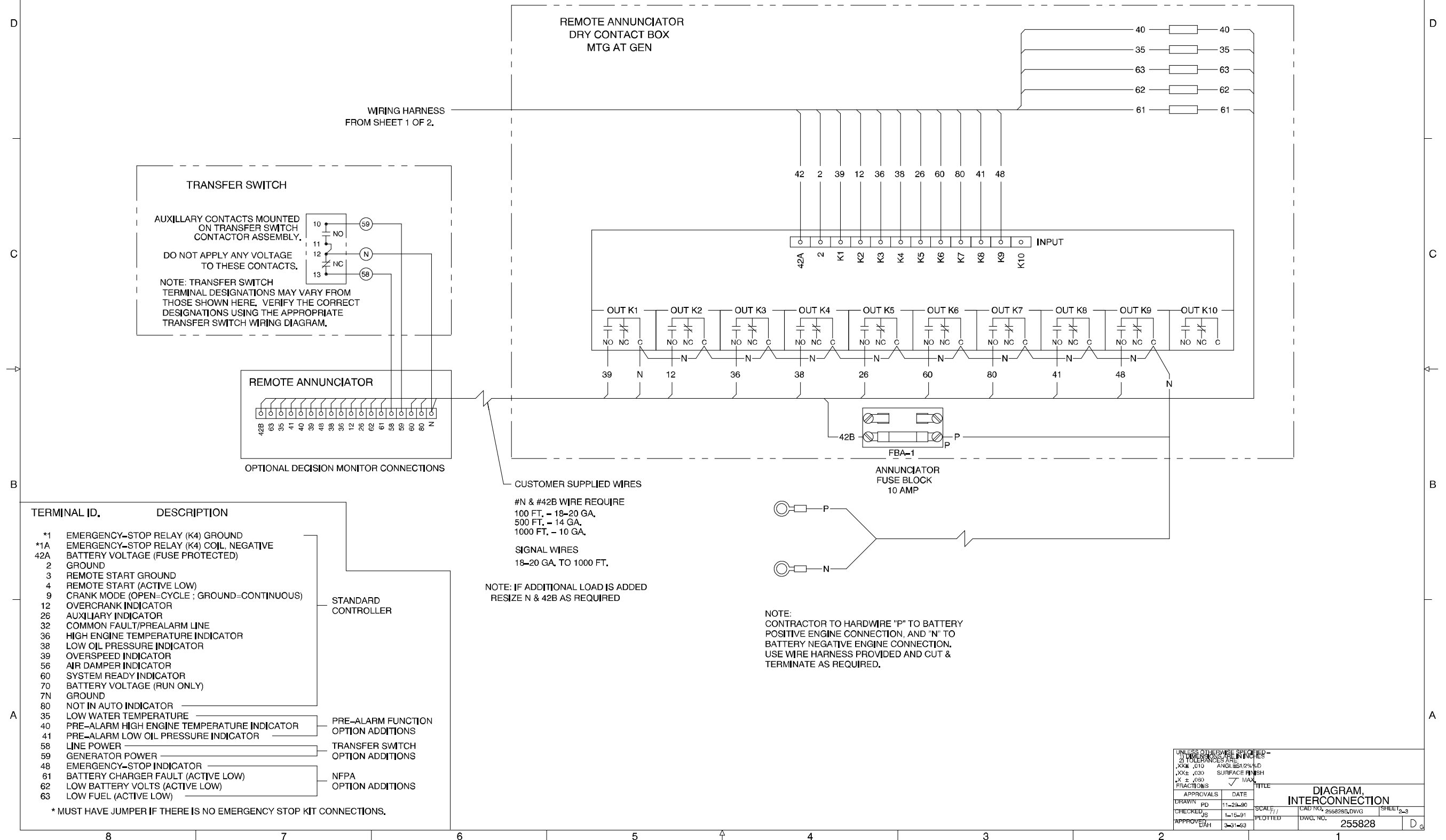
UNLESS OTHERWISE SPECIFIED -		TOLERANCES ARE:		SURFACE FINISH	
ANGLES	± 1/2°	LOC. ± .015	FIN. ± .015	MAX.	MIN.
APPROVALS	DATE	TITLE			
DESIGNED	DATE	DIAGRAM, WIRING			
DRAWN	DATE	SCALE	NONE	CAD FILE	227897.DWG
CHECKED	DATE	SCALE	NONE	SHEET	1-1
APPROVED	DATE	SCALE	NONE	FIG. NO.	227897

Relay Controller, Point-to-Point Wiring Diagram, 3 Phase, 227897-A



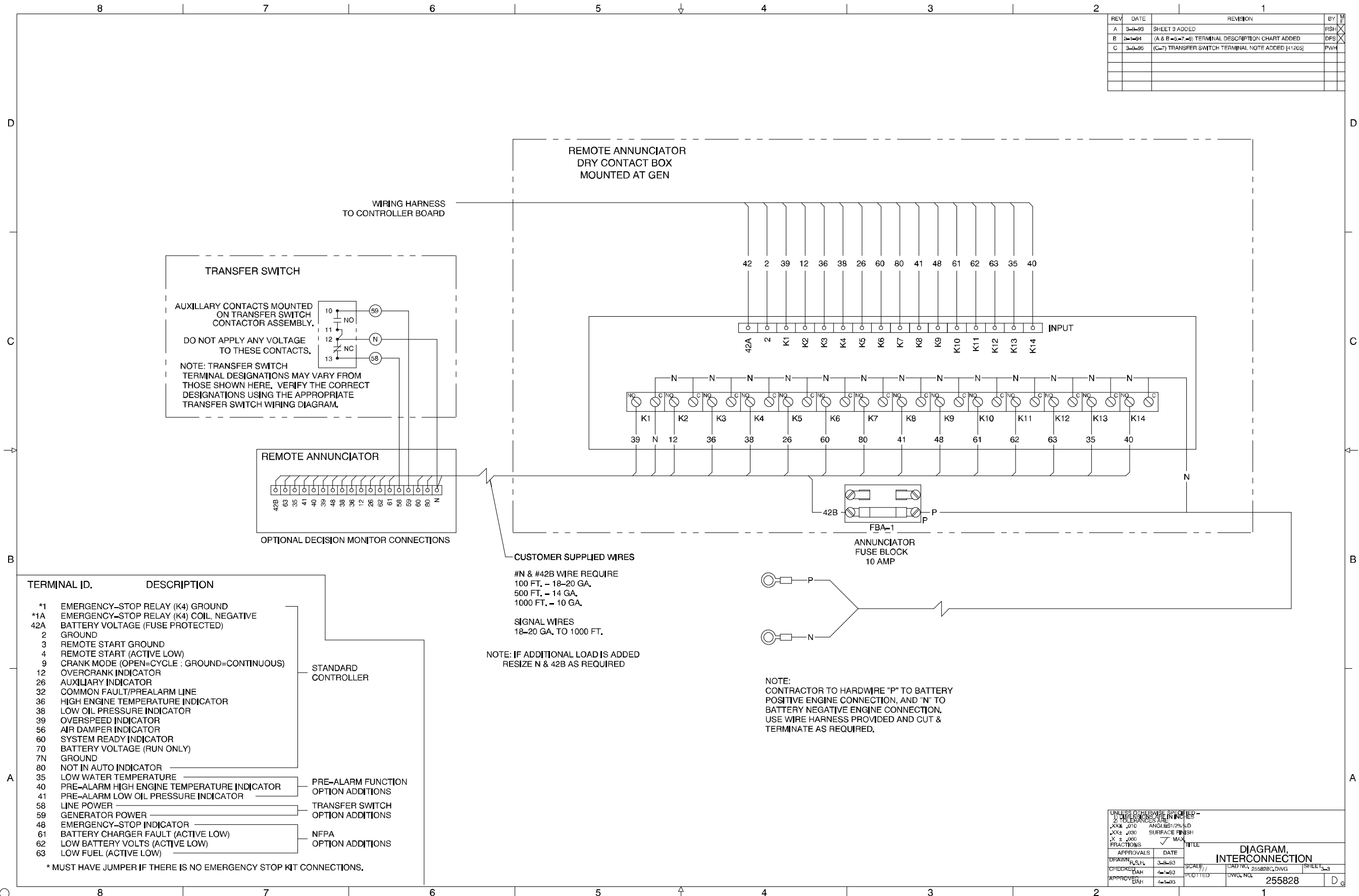
Microprocessor Controller Accessory Connections, 255828A-M

REV	DATE	REVISION	BY
G	2-15-91	REVISED INTERCONNECTIONS, ADDED NOTES & #N WAS #2	DLS
H	2-20-91	(B-8) 42B WAS 42A, (B-4) ADDED ANNUNCIATOR FUSE BLOCK	DLS
J	3-9-93	WIRING & NOTE	RSH
K	2-1-94	(A & B-6-7-8) TERMINAL DESCRIPTION CHART ADDED	DFS
L	3-9-95	(C-7) TRANSFER SWITCH TERMINAL NOTE ADDED [41205]	PWH



Microprocessor Controller, Remote Annunciator Kit, 10-Relay, 255828B-L

REV	DATE	REVISION	BY
A	3-9-93	SHEET 3 ADDED	FSH
B	3-1-94	(A & B = 5-7-93) TERMINAL DESCRIPTION CHART ADDED	DFS
C	3-3-95	(C-7) TRANSFER SWITCH TERMINAL NOTE ADDED [41205]	PWH



Microprocessor Controller, Remote Annunciator Kit, 14-Relay, 255828C-C

TP-5815 7/96b

E Kohler Co., 1996. All rights reserved.

KOHLER[®] POWER SYSTEMS

KOHLER CO. Kohler, Wisconsin 53044
Phone 920-565-3381, Web site www.kohlergenerators.com
Fax 920-459-1646 (U.S.A. Sales), Fax 920-459-1614 (International)
For the nearest sales and service outlet in U.S.A. and Canada
Phone 1-800-544-2444

Kohler Power Systems
Asia Pacific Headquarters
7 Jurong Pier Road
Singapore 619159
Phone (65)264-6422, Fax (65)264-6455