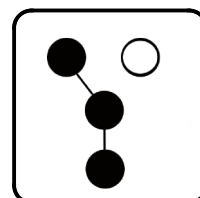


# Wiring Diagrams

## Service Entrance Rated Automatic Transfer Switches



Models:

**KEP**

Controls:

Decision-Maker® MPAC 1500

**KOHLER®**  
Power Systems

**9001**  
**KOHLER**  
POWER SYSTEMS  
NATIONALLY REGISTERED

TP-6919 6/17b

## Product Identification Information

Product identification numbers determine service parts. Record the product identification numbers in the spaces below immediately after unpacking the products so that the numbers are readily available for future reference. Record field-installed kit numbers after installing the kits.

## Transfer Switch Identification Numbers

Record the product identification numbers from the transfer switch nameplate.

Model Designation \_\_\_\_\_

Serial Number \_\_\_\_\_

[illegible]

This manual provides wiring diagrams for the automatic transfer switch models listed on the front cover.

Use the chart on the next page to identify the diagrams for your model. Diagrams are arranged in alphanumeric order.

Information in this publication represents data available at the time of print. The manufacturer of Kohler Co. products reserves the right to change this publication and the products represented without notice and without any obligation or liability whatsoever.

---

## Service Assistance

For professional advice on generator set power requirements and conscientious service, please contact your nearest Kohler distributor or dealer.

- Consult the Yellow Pages under the heading Generators—Electric.
- Visit the Kohler Power Systems website at [KOHLERPower.com](http://KOHLERPower.com).
- Look at the labels and decals on your Kohler product or review the appropriate literature or documents included with the product.
- Call toll free in the US and Canada 1-800-544-2444.
- Outside the US and Canada, call the nearest regional office.

### **Headquarters Europe, Middle East, Africa (EMEA)**

Kohler Power Systems Netherlands B.V.  
Kristallaan 1  
4761 ZC Zevenbergen  
The Netherlands  
Phone: (31) 168 331630  
Fax: (31) 168 331631

### **Asia Pacific**

Power Systems Asia Pacific Regional Office  
Singapore, Republic of Singapore  
Phone: (65) 6264-6422  
Fax: (65) 6264-6455

### **China**

North China Regional Office, Beijing  
Phone: (86) 10 6518 7950  
(86) 10 6518 7951  
(86) 10 6518 7952  
Fax: (86) 10 6518 7955

East China Regional Office, Shanghai  
Phone: (86) 21 6288 0500  
Fax: (86) 21 6288 0550

### **India, Bangladesh, Sri Lanka**

India Regional Office  
Bangalore, India  
Phone: (91) 80 3366208  
(91) 80 3366231  
Fax: (91) 80 3315972

### **Japan, Korea**

North Asia Regional Office  
Tokyo, Japan  
Phone: (813) 3440-4515  
Fax: (813) 3440-2727

# Schematics and Wiring Diagrams

In order to determine which diagrams apply to your unit, follow the instructions below to identify the transfer switch size (amps), the switch type (MCCB or ICCB), and the transformer assembly installed on your unit. Then refer to Figure 3, Wiring Diagram Reference, to find the applicable drawings.

## MCCB and ICCB Models

Check the model designation on the ATS nameplate to determine whether the model uses molded case circuit breakers (MCCB) or insulated case circuit breakers (ICCB) on the utility side. The second-to-last digit in the model designation identifies the utility side power switching device. See Figure 1. Also check the size of the transfer switch in amps.

Example:

KEP-DMTA-**0400S**-NK has a letter N in the second-to-last place, which indicates MCCB. The transfer switch size is 400 amps.

Code	Power Switching Device Type
M	MCCB
N	
P	
R	ICCB
T	

**Figure 1** Utility Side Power Switching Device

## Transformer Assemblies

Revised transformer assemblies were introduced with the release of service disconnect to OFF units and controller firmware version 1.10.

To identify the transformer assembly, open the enclosure door and compare the transformer assembly to Figure 2 or check the accessories section of the ATS nameplate. The nameplate is located on the controller cover on the inside of the enclosure door. The transformer assembly is typically mounted on the right side of the enclosure; the location varies for different ATS sizes and enclosure types.

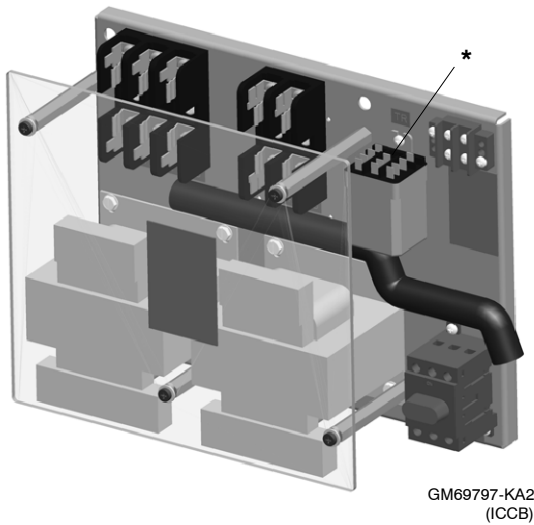
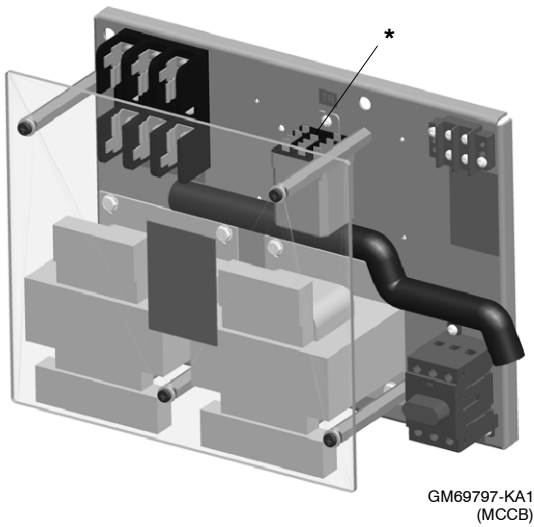
If the transfer switch is equipped with the revised transformer assembly, kit number GM94796-AA1 or GM94796-AA2 will appear in the accessories section of the transfer switch nameplate. Transfer switches equipped with an original transformer assembly GM69797-KA1 or GM69797-KA2 do not have the transformer kit number printed on the nameplate.

- Transfer switches equipped with an original transformer assembly GM69797-KA1 or GM69797-KA2 must use the Service Disconnect to Emergency position only.
- Transfer switches using revised transformer assembly number GM94796-AA1 (for MCCB models) or GM94796-AA2 (for ICCB models) are factory-set to use the Service Disconnect to OFF position.

**Note:** In some applications, an ATS equipped with the revised transformer assembly GM94796-AA1 or GM94796-AA2 may have been converted in the field to use the Service Disconnect to Emergency position. In this case, programmable output 1 on the main logic board will be disconnected and some connections to the transformer assembly terminal block TB will be different than shown on the wiring diagrams in this manual. See the Transfer Switch Operation/Installation Manual, TP-6946 revision 3/16b or later, for details.

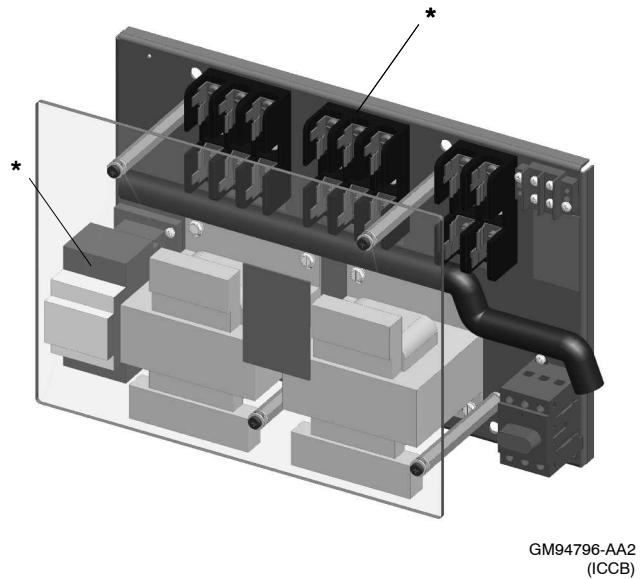
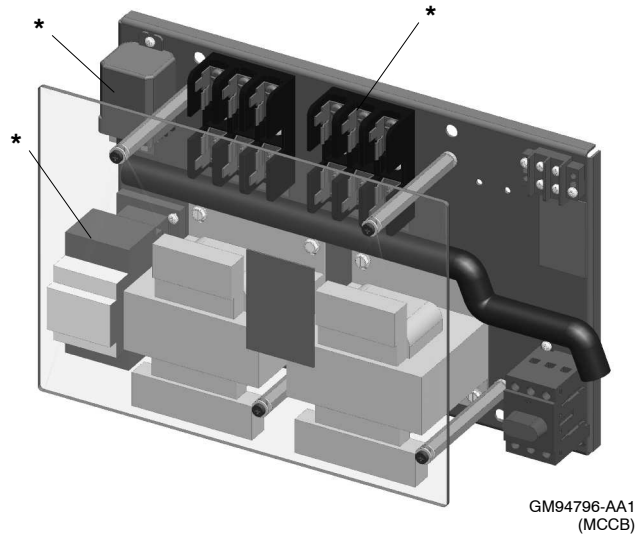


**Original Transformer Assemblies  
GM69797-KA1 and -KA2  
(Service Disconnect to EMERGENCY only) :**



\* Asterisk indicates differences that can be used to identify original or revised transformer assemblies.

**Revised Transformer Assemblies  
GM94796-AA1 and -AA2  
(Service Disconnect to OFF†) :**

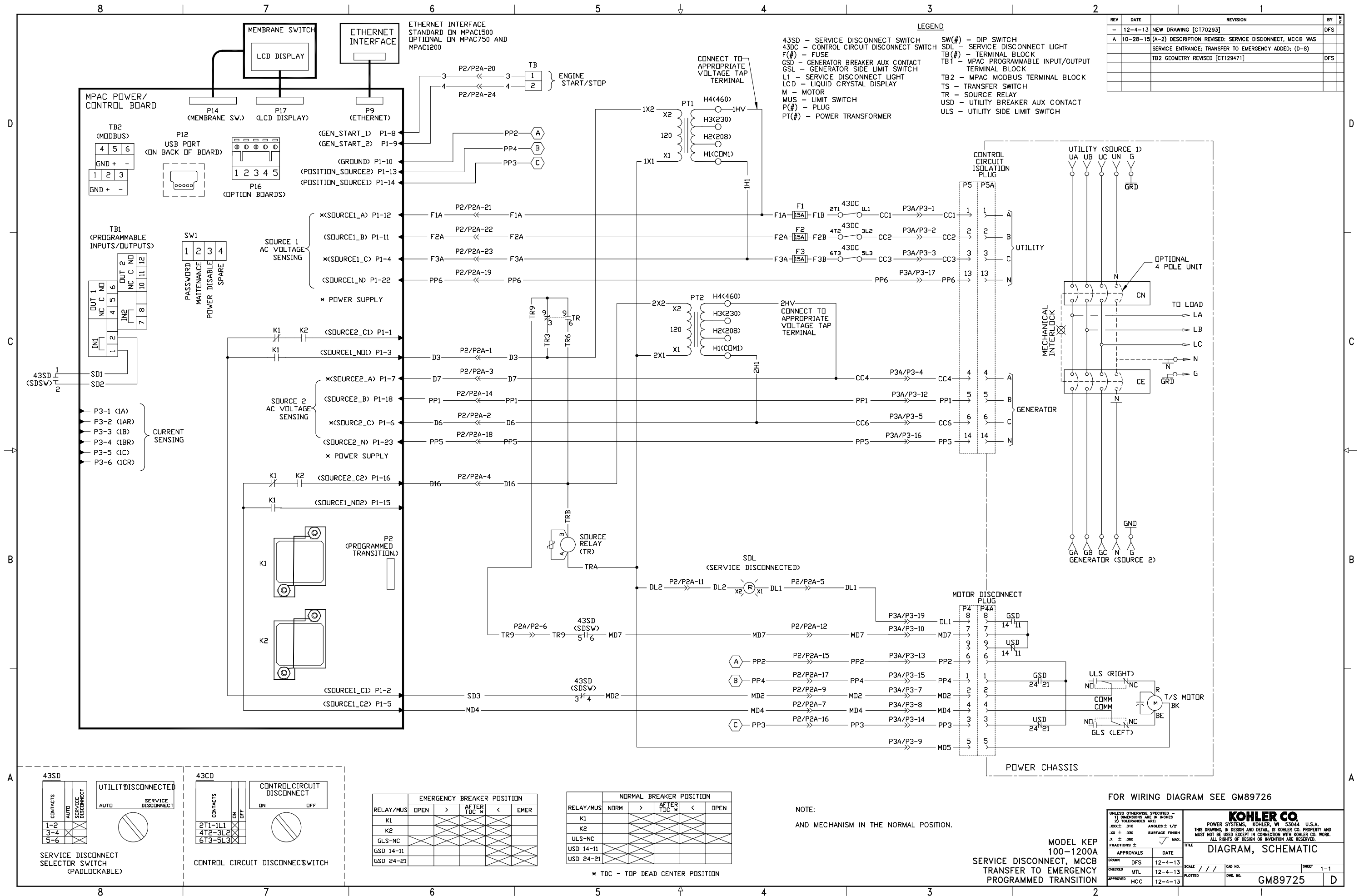


† Transfer switches equipped with transformer assembly GM94796-AA1 or GM94796-AA2 may be converted to use the Service Disconnect to Emergency position. See TP-6946, Transfer Switch Operation and Installation Manual.

**Figure 2** Transformer Assemblies

Model	Description	Schematic		Wiring Diagram	
		Drawing Number	Page	Drawing Number	Page
Units with Transformer Assembly GM69797-KA1 or GM69797-KA2 (Service Disconnect to EMERGENCY Models)	100–1200 Amp MCCB	GM89725	7	GM89726 Sheet 1 Sheet 2 Sheet 3	8 9 10
	800–4000 Amp ICCB	GM89727	11	GM89728 Sheet 1 Sheet 2 Sheet 3	12 13 14
Units with Transformer Assembly GM94796-AA1 or GM94796-AA2 (Service Disconnect to OFF Models)†	100–1200 Amp MCCB	GM95676 Sheet 1 Sheet 2	15 16	GM95677 Sheet 1 Sheet 2 Sheet 3 Sheet 4	17 18 19 20
	800–4000 Amp ICCB	GM95678	21	GM95679 Sheet 1 Sheet 2 Sheet 3	22 23 24
† Transfer switches equipped with transformer assembly GM94796-AA1 or GM94796-AA2 may be converted to use the Service Disconnect to Emergency position. See TP-6946, Transfer Switch Operation and Installation Manual.					

**Figure 3** Wiring Diagram Reference



ENCLOSURE BACK PANEL

REV	DATE	REVISION	BY	CHK
-	12-4-13	NEW DRAWING [CT70293]	DFS	
A	10-28-15	(A-2) DESCRIPTION REVISED: SERVICE DISCONNECT, MCCB WAS SERVICE ENTRANCE; TRANSFER TO EMERGENCY ADDED AND SEE SHEETS 2 & 3 [CT129471]	DFS	

P5 CONNECTIONS

PIN #1	CC1	(P3-1)
2	CC2	(P3-2)
3	CC3	(P3-3)
4	CC4	(P3-4)
5	PP1	(P3-12)
6	CC6	(P3-5)
7	N/C	.
8	N/C	.
9	N/C	.
10	N/C	.
11	N/C	.
12	N/C	.
13	PP6	(P3-17)
14	PP5	(P3-16)
15	N/C	.

P4 CONNECTIONS

PIN #1	PP4	(P3-15)
2	MD2	(P3-7)
3	PP3	(P3-14)
4	MD4	(P3-8)
5	MD5	(P3-9)
6	PP2	(P3-13)
7	MD7	(P3-10)
8	DL1	(P3-19)
9	N/C	.

P4 CONNECTIONS

PIN #1	PP4	(P3-15)
2	MD2	(P3-7)
3	PP3	(P3-14)
4	MD4	(P3-8)
5	MD5	(P3-9)
6	PP2	(P3-13)
7	MD7	(P3-10)
8	DL1	(P3-19)
9	N/C	.

P5 CONNECTIONS

PIN #1	CC1	(P3-1)
2	CC2	(P3-2)
3	CC3	(P3-3)
4	CC4	(P3-4)
5	PP1	(P3-12)
6	CC6	(P3-5)
7	N/C	.
8	N/C	.
9	N/C	.
10	N/C	.
11	N/C	.
12	N/C	.
13	PP6	(P3-17)
14	PP5	(P3-16)
15	N/C	.

P3 CONNECTIONS

PIN #1	CC1	(P5-1)
2	CC2	(P5-2)
3	CC3	(P5-3)
4	CC4	(P5-4)
5	CC6	(P5-6)
6	N/C	.
7	MD2	(P4-2)
8	MD4	(P4-4)
9	MD5	(P4-5)
10	MD7	(P4-7)
11	N/C	.
12	PP1	(P5-5)
13	PP2	(P4-6)
14	PP3	(P4-3)
15	PP4	(P4-1)
16	PP5	(P5-14)
17	PP6	(P5-13)
18	N/C	.
19	DL1	(P4-8)
20	N/C	.
21	N/C	.
22	N/C	.
23	N/C	.
24	N/C	.

(TO TRANSFORMER PANEL SHEET 2)

FOR SCHEMATIC DIAGRAM SEE GM89725

UNLESS OTHERWISE SPECIFIED - DIMENSIONS ARE IN INCHES TOLERANCES ARE: X.XX ± .010 ANGLES: 1/2° X ± .030 SURFACE FINISH: FRACTIONS ± MAX.		<b>KOHLER CO.</b> POWER SYSTEMS, KOHLER, WI 53044 U.S.A. THIS DRAWING, IN DESIGN AND DETAIL, IS KOHLER CO. PROPERTY AND MUST NOT BE USED EXCEPT IN CONNECTION WITH KOHLER CO. WORK. ALL RIGHTS OF DESIGN OR INVENTION ARE RESERVED.	
DRAWN DFS		DATE 12-4-13	
CHECKED MTL		DATE 12-4-13	
APPROVED HCC		DATE 12-4-13	
SCALE: / / /		SHEET 1-3	
PLOTTER		DWG. NO. GM89726	

MODEL KEP  
100-1200A  
SERVICE DISCONNECT, MCCB  
TRANSFER TO EMERGENCY  
PROGRAMMED TRANSITION

100-800 AMP MECHANISM  
(4P, 800A UNIT SHOWN)

1000-1200 AMP MECHANISM

ENCLOSURE SIDE PANEL

TRANSFORMER PANEL

TB

REV	DATE	REVISION	BY	CHK
-	12-4-13	NEW DRAWING [CT70293]	DFS	
A	10-28-15	(A-2) DESCRIPTION REVISED: SERVICE DISCONNECT, MCCB WAS SERVICE ENTRANCE; TRANSFER TO EMERGENCY ADDED AND SEE SHEETS 1 & 3 [CT129471]	DFS	

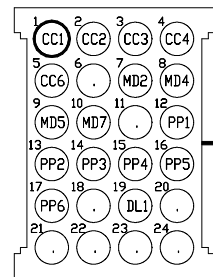
P3A CONNECTIONS

PIN #1	CC1	(43DC-1L1)
2	CC2	(43DC-3L2)
3	CC3	(43DC-5L3)
4	CC4	(W2)
5	CC6	(W1)
6	N/C	.
7	MD2	(P2A-9)
8	MD4	(P2A-7)
9	MD5	(W3)
10	MD7	(P2A-12)
11	N/C	.
12	PP1	(P2A-14)
13	PP2	(P2A-15)
14	PP3	(P2A-16)
15	PP4	(P2A-17)
16	PP5	(P2A-18)
17	PP6	(P2A-19)
18	N/C	.
19	DL1	(P2A-5)
20	N/C	.
21	N/C	.
22	N/C	.
23	N/C	.
24	N/C	.

P2A CONNECTIONS

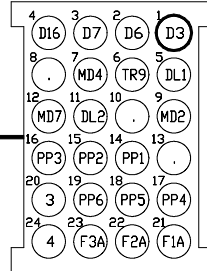
PIN #1	D3	(W5)
2	D6	(W1)
3	D7	(W2)
4	D16	(W4)
5	DL1	(P3A-19)
6	TR9	(TR-9)
7	MD4	(P3A-8)
8	N/C	.
9	MD2	(P3A-7)
10	N/C	.
11	DL2	(W3)
12	MD7	(P3A-10)
13	N/C	.
14	PP1	(P3A-12)
15	PP2	(P3A-13)
16	PP3	(P3A-14)
17	PP4	(P3A-15)
18	PP5	(P3A-16)
19	PP6	(P3A-17)
20	3	(TB-1)
21	F1A	(F1-2)
22	F2A	(F2-2)
23	F3A	(F3-2)
24	4	(TB-2)

P3A



(TO CONTACTOR SHEET 1)

P2A



(TO DOOR SHEET 3)

GM71482 HARNESS REF.

NOTE 1  
208V MODELS: CONNECT THE "1HV" LEAD TO THE H2 TERMINAL ON THE PT1 TRANSFORMER  
220-240V MODELS: CONNECT THE "1HV" LEAD TO THE H3 TERMINAL ON THE PT1 TRANSFORMER  
440-480V MODELS: CONNECT THE "1HV" LEAD TO THE H4 TERMINAL ON THE PT1 TRANSFORMER

NOTE 2  
208V MODELS: CONNECT THE "2HV" LEAD TO THE H2 TERMINAL ON THE PT2 TRANSFORMER  
220-240V MODELS: CONNECT THE "2HV" LEAD TO THE H3 TERMINAL ON THE PT2 TRANSFORMER  
440-480V MODELS: CONNECT THE "2HV" LEAD TO THE H4 TERMINAL ON THE PT2 TRANSFORMER

MODEL KEP  
100-1200A  
SERVICE DISCONNECT, MCCB  
TRANSFER TO EMERGENCY  
PROGRAMMED TRANSITION

FOR SCHEMATIC DIAGRAM SEE GM89725

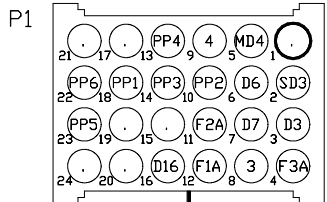
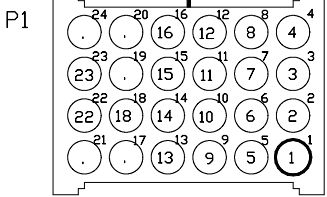
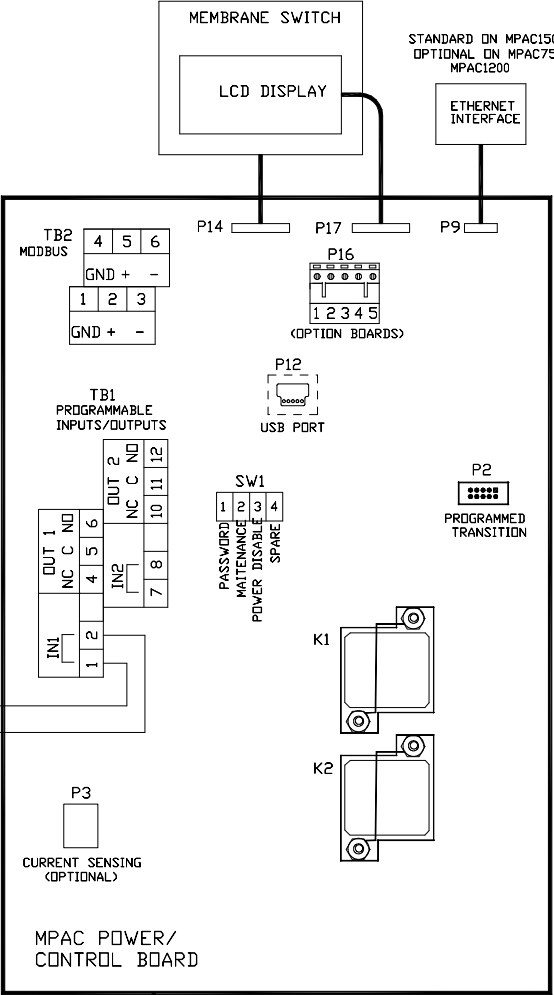
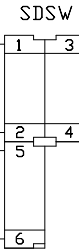
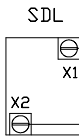
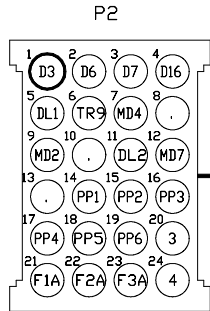
UNLESS OTHERWISE SPECIFIED - 1) DIMENSIONS ARE IN INCHES 2) TOLERANCES ARE: XXX ± .010 ANGLES: 1/2° XX ± .030 SURFACE FINISH X ± .080 FRACTIONS ±		<b>KOHLER CO.</b> POWER SYSTEMS, KOHLER, WI 53044 U.S.A. THIS DRAWING, IN DESIGN AND DETAIL, IS KOHLER CO. PROPERTY AND MUST NOT BE USED EXCEPT IN CONNECTION WITH KOHLER CO. WORK. ALL RIGHTS OF DESIGN OR INVENTION ARE RESERVED.	
APPROVALS		DATE	
DRAWN	DFS	12-4-13	
CHECKED	MTL	12-4-13	
APPROVED	HCC	12-4-13	
TITLE		DIAGRAM, WIRING	
SCALE		///	SHEET 2-3
PLOTTER		DWG. NO.	GM89726
			D

ENCLOSURE DOOR (REAR VIEW)

REV	DATE	REVISION	BY
-	12-4-13	NEW DRAWING [CT170293]	DFS
A	10-28-15	(A-2) DESCRIPTION REVISED: SERVICE DISCONNECT, MCCB WAS SERVICE ENTRANCE; TRANSFER TO EMERGENCY ADDED; (D-4) TB2 GEOMETRY REVISED AND SEE SHEETS 1 & 2 [CT129471]	DFS

P2 CONNECTIONS

PIN #1	D3	(P1-3)
2	D6	(P1-6)
3	D7	(P1-7)
4	D16	(P1-16)
5	DL1	(SDL-X1)
6	TR9	(SDSW-5)
7	MD4	(P1-5)
8	N/C	.
9	MD2	(SDSW-4)
10	N/C	.
11	DL2	(SDL-X2)
12	MD7	(SDSW-6)
13	N/C	.
14	PP1	(P1-18)
15	PP2	(P1-10)
16	PP3	(P1-14)
17	PP4	(P1-13)
18	PP5	(P1-23)
19	PP6	(P1-22)
20	3	(P1-8)
21	F1A	(P1-12)
22	F2A	(P1-11)
23	F3A	(P1-4)
24	4	(P1-9)



P1 CONNECTIONS

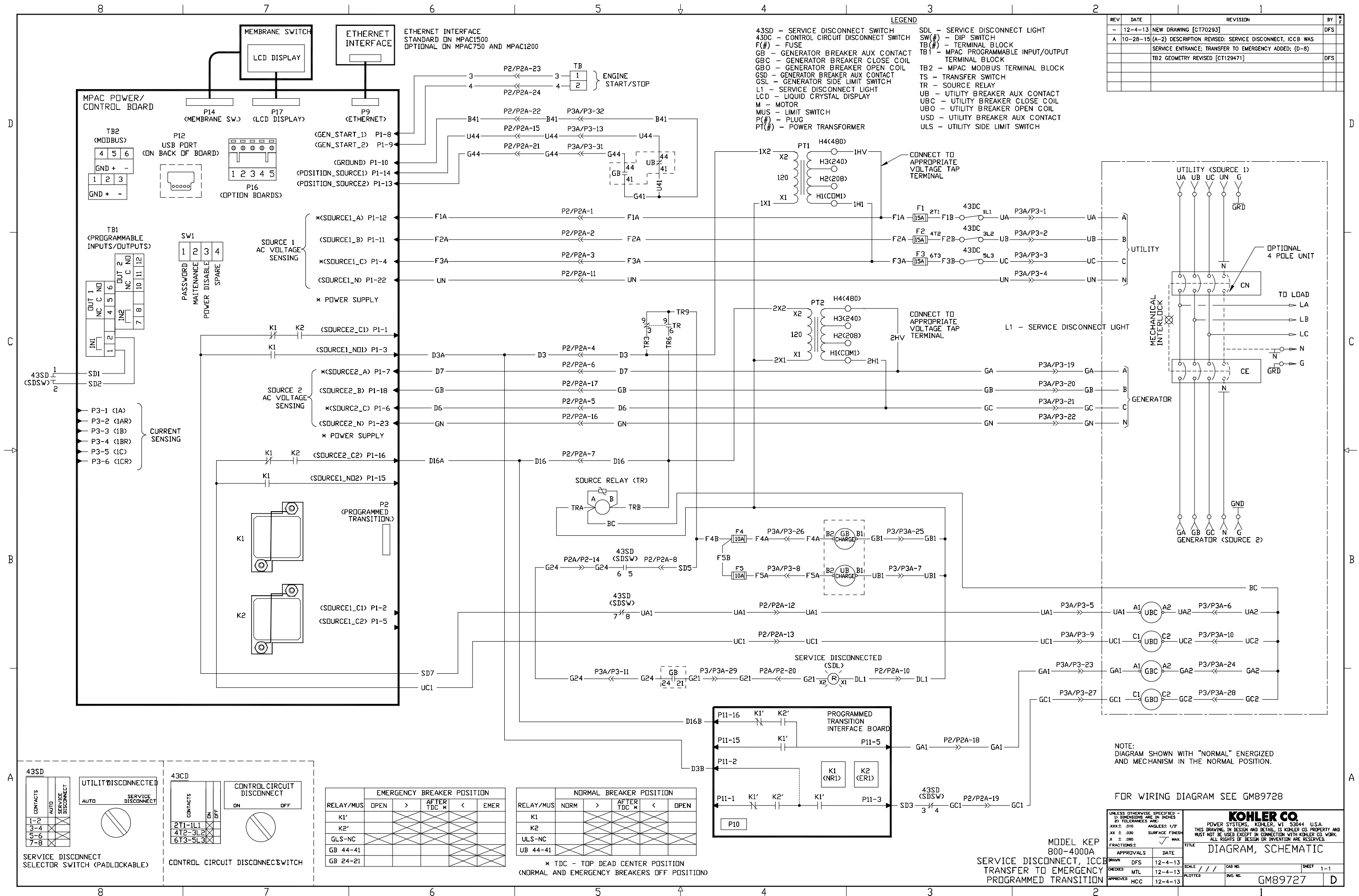
PIN #1	N/C	.
2	SD3	(SDSW-3)
3	D3	(P2-1)
4	F3A	(P2-23)
5	MD4	(P2-7)
6	D6	(P2-2)
7	D7	(P2-3)
8	3	(P2-20)
9	4	(P2-24)
10	PP2	(P2-15)
11	F2A	(P2-22)
12	F1A	(P2-21)
13	PP4	(P2-17)
14	PP3	(P2-16)
15	N/C	.
16	D16	(P2-4)
17	N/C	.
18	PP1	(P2-14)
19	N/C	.
20	N/C	.
21	N/C	.
22	PP6	(P2-19)
23	PP5	(P2-18)
24	N/C	.

GM71483 HARNESS REF.

FOR SCHEMATIC DIAGRAM SEE GM89725

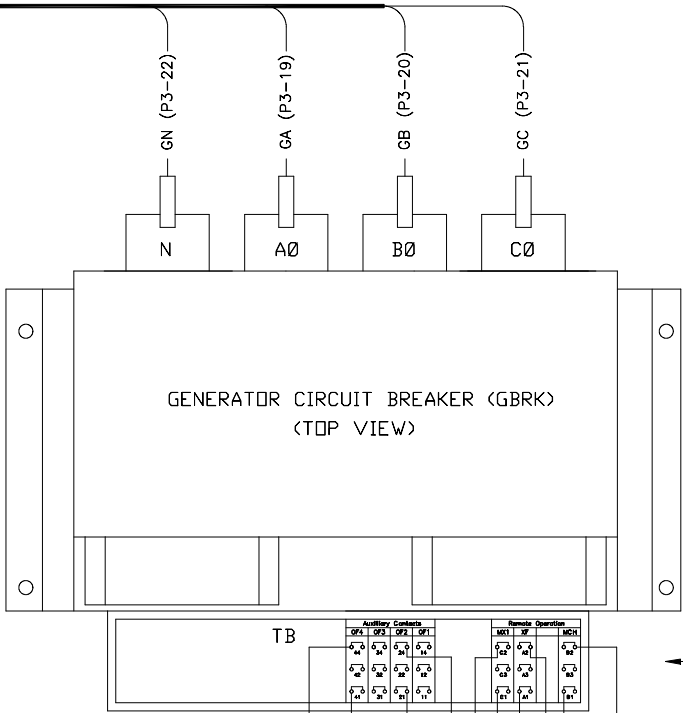
MODEL KEP  
100-1200A  
SERVICE DISCONNECT, MCCB  
TRANSFER TO EMERGENCY  
PROGRAMMED TRANSITION

UNLESS OTHERWISE SPECIFIED - DIMENSIONS ARE IN INCHES TOLERANCES ARE: XXX ± .010 ANGLES: 1/2° XX ± .030 SURFACE FINISH X ± .060 FRACTIONS: 1/16, 1/8, 1/4, 1/2, 3/4, 1, 2, 3, 4, 5, 6, 7, 8, 9, 10, 11, 12, 13, 14, 15, 16, 17, 18, 19, 20, 21, 22, 23, 24, 25, 26, 27, 28, 29, 30, 31, 32, 33, 34, 35, 36, 37, 38, 39, 40, 41, 42, 43, 44, 45, 46, 47, 48, 49, 50, 51, 52, 53, 54, 55, 56, 57, 58, 59, 60, 61, 62, 63, 64, 65, 66, 67, 68, 69, 70, 71, 72, 73, 74, 75, 76, 77, 78, 79, 80, 81, 82, 83, 84, 85, 86, 87, 88, 89, 90, 91, 92, 93, 94, 95, 96, 97, 98, 99, 100, 101, 102, 103, 104, 105, 106, 107, 108, 109, 110, 111, 112, 113, 114, 115, 116, 117, 118, 119, 120, 121, 122, 123, 124, 125, 126, 127, 128, 129, 130, 131, 132, 133, 134, 135, 136, 137, 138, 139, 140, 141, 142, 143, 144, 145, 146, 147, 148, 149, 150, 151, 152, 153, 154, 155, 156, 157, 158, 159, 160, 161, 162, 163, 164, 165, 166, 167, 168, 169, 170, 171, 172, 173, 174, 175, 176, 177, 178, 179, 180, 181, 182, 183, 184, 185, 186, 187, 188, 189, 190, 191, 192, 193, 194, 195, 196, 197, 198, 199, 200, 201, 202, 203, 204, 205, 206, 207, 208, 209, 210, 211, 212, 213, 214, 215, 216, 217, 218, 219, 220, 221, 222, 223, 224, 225, 226, 227, 228, 229, 230, 231, 232, 233, 234, 235, 236, 237, 238, 239, 240, 241, 242, 243, 244, 245, 246, 247, 248, 249, 250, 251, 252, 253, 254, 255, 256, 257, 258, 259, 260, 261, 262, 263, 264, 265, 266, 267, 268, 269, 270, 271, 272, 273, 274, 275, 276, 277, 278, 279, 280, 281, 282, 283, 284, 285, 286, 287, 288, 289, 290, 291, 292, 293, 294, 295, 296, 297, 298, 299, 300, 301, 302, 303, 304, 305, 306, 307, 308, 309, 310, 311, 312, 313, 314, 315, 316, 317, 318, 319, 320, 321, 322, 323, 324, 325, 326, 327, 328, 329, 330, 331, 332, 333, 334, 335, 336, 337, 338, 339, 340, 341, 342, 343, 344, 345, 346, 347, 348, 349, 350, 351, 352, 353, 354, 355, 356, 357, 358, 359, 360, 361, 362, 363, 364, 365, 366, 367, 368, 369, 370, 371, 372, 373, 374, 375, 376, 377, 378, 379, 380, 381, 382, 383, 384, 385, 386, 387, 388, 389, 390, 391, 392, 393, 394, 395, 396, 397, 398, 399, 400, 401, 402, 403, 404, 405, 406, 407, 408, 409, 410, 411, 412, 413, 414, 415, 416, 417, 418, 419, 420, 421, 422, 423, 424, 425, 426, 427, 428, 429, 430, 431, 432, 433, 434, 435, 436, 437, 438, 439, 440, 441, 442, 443, 444, 445, 446, 447, 448, 449, 450, 451, 452, 453, 454, 455, 456, 457, 458, 459, 460, 461, 462, 463, 464, 465, 466, 467, 468, 469, 470, 471, 472, 473, 474, 475, 476, 477, 478, 479, 480, 481, 482, 483, 484, 485, 486, 487, 488, 489, 490, 491, 492, 493, 494, 495, 496, 497, 498, 499, 500, 501, 502, 503, 504, 505, 506, 507, 508, 509, 510, 511, 512, 513, 514, 515, 516, 517, 518, 519, 520, 521, 522, 523, 524, 525, 526, 527, 528, 529, 530, 531, 532, 533, 534, 535, 536, 537, 538, 539, 540, 541, 542, 543, 544, 545, 546, 547, 548, 549, 550, 551, 552, 553, 554, 555, 556, 557, 558, 559, 560, 561, 562, 563, 564, 565, 566, 567, 568, 569, 570, 571, 572, 573, 574, 575, 576, 577, 578, 579, 580, 581, 582, 583, 584, 585, 586, 587, 588, 589, 590, 591, 592, 593, 594, 595, 596, 597, 598, 599, 600, 601, 602, 603, 604, 605, 606, 607, 608, 609, 610, 611, 612, 613, 614, 615, 616, 617, 618, 619, 620, 621, 622, 623, 624, 625, 626, 627, 628, 629, 630, 631, 632, 633, 634, 635, 636, 637, 638, 639, 640, 641, 642, 643, 644, 645, 646, 647, 648, 649, 650, 651, 652, 653, 654, 655, 656, 657, 658, 659, 660, 661, 662, 663, 664, 665, 666, 667, 668, 669, 670, 671, 672, 673, 674, 675, 676, 677, 678, 679, 680, 681, 682, 683, 684, 685, 686, 687, 688, 689, 690, 691, 692, 693, 694, 695, 696, 697, 698, 699, 700, 701, 702, 703, 704, 705, 706, 707, 708, 709, 710, 711, 712, 713, 714, 715, 716, 717, 718, 719, 720, 721, 722, 723, 724, 725, 726, 727, 728, 729, 730, 731, 732, 733, 734, 735, 736, 737, 738, 739, 740, 741, 742, 743, 744, 745, 746, 747, 748, 749, 750, 751, 752, 753, 754, 755, 756, 757, 758, 759, 760, 761, 762, 763, 764, 765, 766, 767, 768, 769, 770, 771, 772, 773, 774, 775, 776, 777, 778, 779, 780, 781, 782, 783, 784, 785, 786, 787, 788, 789, 790, 791, 792, 793, 794, 795, 796, 797, 798, 799, 800, 801, 802, 803, 804, 805, 806, 807, 808, 809, 810, 811, 812, 813, 814, 815, 816, 817, 818, 819, 820, 821, 822, 823, 824, 825, 826, 827, 828, 829, 830, 831, 832, 833, 834, 835, 836, 837, 838, 839, 840, 841, 842, 843, 844, 845, 846, 847, 848, 849, 850, 851, 852, 853, 854, 855, 856, 857, 858, 859, 860, 861, 862, 863, 864, 865, 866, 867, 868, 869, 870, 871, 872, 873, 874, 875, 876, 877, 878, 879, 880, 881, 882, 883, 884, 885, 886, 887, 888, 889, 890, 891, 892, 893, 894, 895, 896, 897, 898, 899, 900, 901, 902, 903, 904, 905, 906, 907, 908, 909, 910, 911, 912, 913, 914, 915, 916, 917, 918, 919, 920, 921, 922, 923, 924, 925, 926, 927, 928, 929, 930, 931, 932, 933, 934, 935, 936, 937, 938, 939, 940, 941, 942, 943, 944, 945, 946, 947, 948, 949, 950, 951, 952, 953, 954, 955, 956, 957, 958, 959, 960, 961, 962, 963, 964, 965, 966, 967, 968, 969, 970, 971, 972, 973, 974, 975, 976, 977, 978, 979, 980, 981, 982, 983, 984, 985, 986, 987, 988, 989, 990, 991, 992, 993, 994, 995, 996, 997, 998, 999, 1000, 1001, 1002, 1003, 1004, 1005, 1006, 1007, 1008, 1009, 1010, 1011, 1012, 1013, 1014, 1015, 1016, 1017, 1018, 1019, 1020, 1021, 1022, 1023, 1024, 1025, 1026, 1027, 1028, 1029, 1030, 1031, 1032, 1033, 1034, 1035, 1036, 1037, 1038, 1039, 1040, 1041, 1042, 1043, 1044, 1045, 1046, 1047, 1048, 1049, 1050, 1051, 1052, 1053, 1054, 1055, 1056, 1057, 1058, 1059, 1060, 1061, 1062, 1063, 1064, 1065, 1066, 1067, 1068, 1069, 1070, 1071, 1072, 1073, 1074, 1075, 1076, 1077, 1078, 1079, 1080, 1081, 1082, 1083, 1084, 1085, 1086, 1087, 1088, 1089, 1090, 1091, 1092, 1093, 1094, 1095, 1096, 1097, 1098, 1099, 1100, 1101, 1102, 1103, 1104, 1105, 1106, 1107, 1108, 1109, 1110, 1111, 1112, 1113, 1114, 1115, 1116, 1117, 1118, 1119, 1120, 1121, 1122, 1123, 1124, 1125, 1126, 1127, 1128, 1129, 1130, 1131, 1132, 1133, 1134, 1135, 1136, 1137, 1138, 1139, 1140, 1141, 1142, 1143, 1144, 1145, 1146, 1147, 1148, 1149, 1150, 1151, 1152, 1153, 1154, 1155, 1156, 1157, 1158, 1159, 1160, 1161, 1162, 1163, 1164, 1165, 1166, 1167, 1168, 1169, 1170, 1171, 1172, 1173, 1174, 1175, 1176, 1177, 1178, 1179, 1180, 1181, 1182, 1183, 1184, 1185, 1186, 1187, 1188, 1189, 1190, 1191, 1192, 1193, 1194, 1195, 1196, 1197, 1198, 1199, 1200, 1201, 1202, 1203, 1204, 1205, 1206, 1207, 1208, 1209, 1210, 1211, 1212, 1213, 1214, 1215, 1216, 1217, 1218, 1219, 1220, 1221, 1222, 1223, 1224, 1225, 1226, 1227, 1228, 1229, 1230, 1231, 1232, 1233, 1234, 1235, 1236, 1237, 1238, 1239, 1240, 1241, 1242, 1243, 1244, 1245, 1246, 1247, 1248, 1249, 1250, 1251, 1252, 1253, 1254, 1255, 1256, 1257, 1258, 1259, 1260, 1261, 1262, 1263, 1264, 1265, 1266, 1267, 1268, 1269, 1270, 1271, 1272, 1273, 1274, 1275, 1276, 1277, 1278, 1279, 1280, 1281, 1282, 1283, 1284, 1285, 1286, 1287, 1288, 1289, 1290, 1291, 1292, 1293, 1294, 1295, 1296, 1297, 1298, 1299, 1300, 1301, 1302, 1303, 1304, 1305, 1306, 1307, 1308, 1309, 1310, 1311, 1312, 1313, 1314, 1315, 1316, 1317, 1318, 1319, 1320, 1321, 1322, 1323, 1324, 1325, 1326, 1327, 1328, 1329, 1330, 1331, 1332, 1333, 1334, 1335, 1336, 1337, 1338, 1339, 1340, 1341, 1342, 1343, 1344, 1345, 1346, 1347, 1348, 1349, 1350, 1351, 1352, 1353, 1354, 1355, 1356, 1357, 1358, 1359, 1360, 1361, 1362, 1363, 1364, 1365, 1366, 1367, 1368, 1369, 1370, 1371, 1372, 1373, 1374, 1375, 1376, 1377, 1378, 1379, 1380, 1381, 1382, 1383, 1384, 1385, 1386, 1387, 1388, 1389, 1390, 1391, 1392, 1393, 1394, 1395, 1396, 1397, 1398, 1399, 1400, 1401, 1402, 1403, 1404, 1405, 1406, 1407, 1408, 1409, 1410, 1411, 1412, 1413, 1414, 1415, 1416, 1417, 1418, 1419, 1420, 1421, 1422, 1423, 1424, 1425, 1426, 1427, 1428, 1429, 1430, 1431, 1432, 1433, 1434, 1435, 1436, 1437, 1438, 1439, 1440, 1441, 1442, 1443, 1444, 1445, 1446, 1447, 1448, 1449, 1450, 1451, 1452, 1453, 1454, 1455, 1456, 1457, 1458, 1459, 1460, 1461, 1462, 1463, 1464, 1465, 1466, 1467, 1468, 1469, 1470, 1471, 1472, 1473, 1474, 1475, 1476, 1477, 1478, 1479, 1480, 1481, 1482, 1483, 1484, 1485, 1486, 1487, 1488, 1489, 1490, 1491, 1492, 1493, 1494, 1495, 1496, 1497, 1498, 1499, 1500, 1501, 1502, 1503, 1504, 1505, 1506, 1507, 1508, 1509, 1510, 1511, 1512, 1513, 1514, 1515, 1516, 1517, 1518, 1519, 1520, 1521, 1522, 1523, 1524, 1525, 1526, 1527, 1528, 1529, 1530, 1531, 1532, 1533, 1534, 1535, 1536, 1537, 1538, 1539, 1540, 1541, 1542, 1543, 1544, 1545, 1546, 1547, 1548, 1549, 1550, 1551, 1552, 1553, 1554, 1555, 1556, 1557, 1558, 1559, 1560, 1561, 1562, 1563, 1564, 1565, 1566, 1567, 1568, 1569, 1570, 1571, 1572, 1573, 1574, 1575, 1576, 1577, 1578, 1579, 1580, 1581, 1582, 1583, 1584, 1585, 1586, 1587, 1588, 1589, 1590, 1591, 1592, 1593, 1594, 1595, 1596, 1597, 1598, 1599, 1600, 1601, 1602, 1603, 1604, 1605, 1606, 1607, 1608, 1609, 1610, 1611, 1612, 1613, 1614, 1615, 1616, 1617, 1618, 1619, 1620, 1621, 1622, 1623, 1624, 1625, 1626, 1627, 1628, 1629, 1630, 1631, 1632, 1633, 1634, 1635, 1636, 1637, 1638, 1639, 1640, 1641, 1642, 1643, 1644, 1645, 1646, 1647, 1648, 1649, 1650, 1651, 1652, 1653, 1654, 1655, 1656, 1657, 1658, 1659, 1660, 1661, 1662, 1663, 1664, 1665, 1666, 1667, 1668, 1669, 1670, 1671, 1672, 1673, 1674, 1675, 1676, 1677, 1678, 1679, 1680, 1681, 1682, 1683, 1684, 1685, 1686, 1687, 1688, 1689, 1690, 1691, 1692, 1693, 1694, 1695, 1696, 1697, 1698, 1699, 1700, 1701, 1702, 1703, 1704, 1705, 1706, 1707, 1708, 1709, 1710, 1711, 1712, 1713, 1714, 1715, 1716, 1717, 1718, 1719, 1720, 1721, 1722, 1723, 1724, 1725, 1726, 1727, 1728, 1729, 1730, 1731, 1732, 1733, 1734, 1735, 1736, 1737, 1738, 1739, 1740, 1741, 1742, 1743, 1744, 1745, 1746, 1747, 1748, 1749, 1750, 1751, 1752, 1753, 1754, 1755, 1756, 1757, 1758, 1759, 1760, 1761, 1762, 1763, 1764, 1765, 1766, 1767, 1768, 1769, 1770, 1771, 1772, 1773, 1774, 1775, 1776, 1777, 1778, 1779, 1780, 1781, 1782, 1783, 1784, 1785, 1786, 1787, 1788, 1789, 1790, 1791, 1792, 1793, 1794, 1795, 1796, 1797, 1798, 1799, 1800, 1801, 1802, 1803, 1804, 1805, 1806, 1807, 1808, 1809, 1810, 1811, 1812, 1813, 1814, 1815, 1816, 1817, 1818, 1819,
---



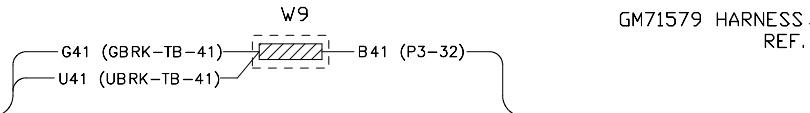
ENCLOSURE CIRCUIT BREAKER COMPARTMENTS

REV	DATE	REVISION	BY	CHK
-	12-4-13	NEW DRAWING [CT70293]	DFS	
A	1-15-15	(A-2) DESCRIPTION REVISED: SERVICE DISCONNECT, ICCB WAS SERVICE ENTRANCE; TRANSFER TO EMERGENCY ADDED AND SEE SHEETS 2 & 3 [CT129471]	DFS	

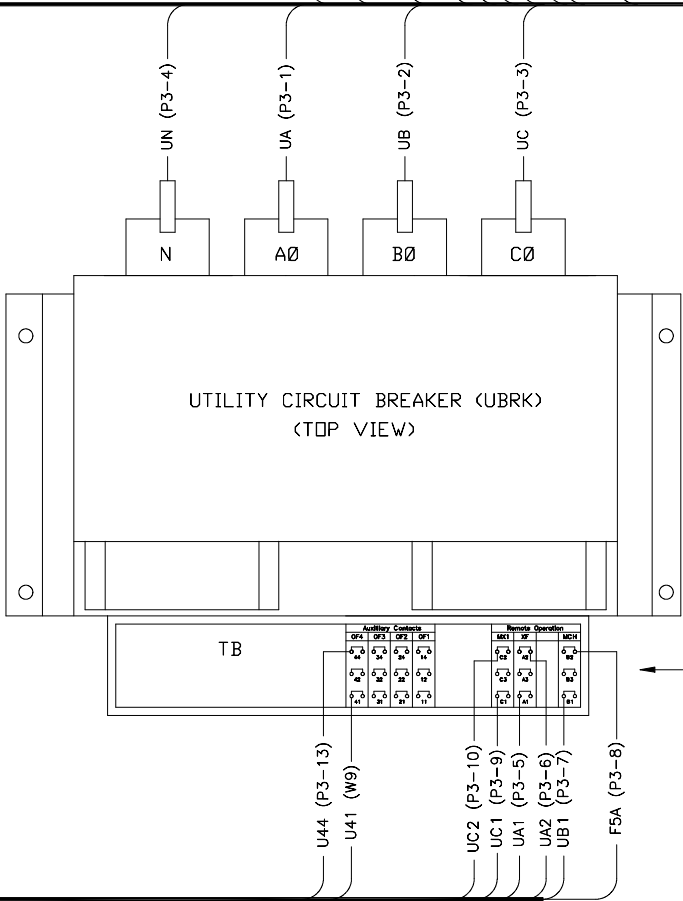
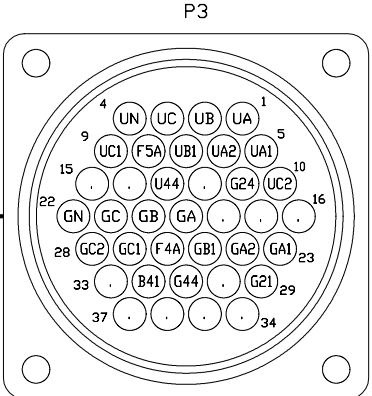


P3 CONNECTIONS			
PIN #1	UA (UBRK-A0)	19	GA (GBRK-A0)
2	UB (UBRK-B0)	20	GB (GBRK-B0)
3	UC (UBRK-C0)	21	GC (GBRK-C0)
4	UN (UBRK-N)	22	GN (GBRK-N)
5	UA1 (UBRK-TB-A1)	23	GA1 (GBRK-TB-A1)
6	UA2 (UBRK-TB-A2)	24	GA2 (GBRK-TB-A2)
7	UB1 (UBRK-TB-B1)	25	GB1 (GBRK-TB-B1)
8	F5A (UBRK-TB-B2)	26	F4A (GBRK-TB-B2)
9	UC1 (UBRK-TB-C1)	27	GC1 (GBRK-TB-C1)
10	UC2 (UBRK-TB-C2)	28	GC2 (GBRK-TB-C2)
11	G24 (GBRK-TB-24)	29	G21 (GBRK-TB-21)
12	N/C	30	N/C
13	U44 (UBRK-TB-44)	31	G44 (GBRK-TB-44)
14	N/C	32	B41 (W9)
15	N/C	33	N/C
16	N/C	34	N/C
17	N/C	35	N/C
18	N/C	36	N/C
		37	N/C

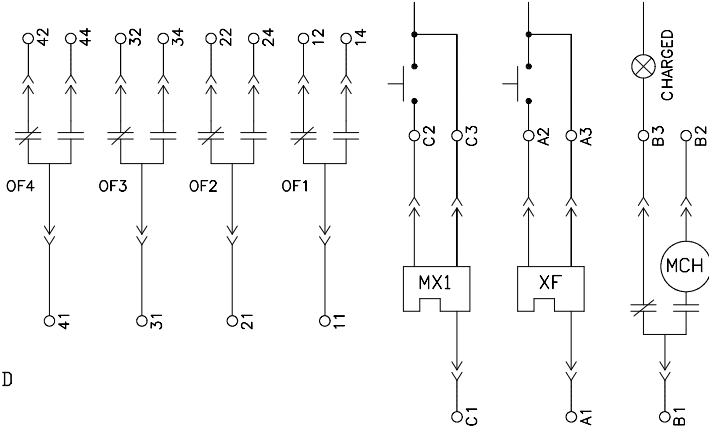
SEE DETAIL A FOR ENLARGED VIEW OF TERMINAL BLOCK



GM71579 HARNESS REF.



SEE DETAIL A FOR ENLARGED VIEW OF TERMINAL BLOCK



DETAIL A

Auxiliary Contacts				Remote Operation		
OF4	OF3	OF2	OF1	MX1	XF	MCH
44 42 41	34 32 31	24 22 21	14 12 11	C2 C3 C1	A2 A3 A1	B2 B3 B1

NOTE:  
OF = AUXILIARY CONTACTS  
MX1 = SHUNT TRIP  
XF = SHUNT CLOSE  
MCH = SPRING-CHARGING MOTOR

FOR SCHEMATIC DIAGRAM SEE GM89727

MODEL KEP  
800-4000 AMP  
SERVICE DISCONNECT, ICCB  
TRANSFER TO EMERGENCY  
PROGRAMMED TRANSITION

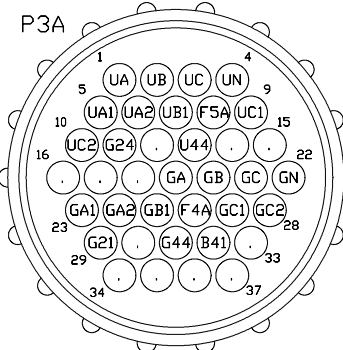
UNLESS OTHERWISE SPECIFIED - DIMENSIONS ARE IN INCHES TOLERANCES ARE: X.XX ± .010 ANGLES: 1/2° X ± .030 SURFACE FINISH: MAX. FRACTIONS: 1/16, 1/8, 1/4, 1/2, 3/4		<b>KOHLER CO.</b> POWER SYSTEMS, KOHLER, WI 53044 U.S.A. THIS DRAWING, IN DESIGN AND DETAIL, IS KOHLER CO. PROPERTY AND MUST NOT BE USED EXCEPT IN CONNECTION WITH KOHLER CO. WORK. ALL RIGHTS OF DESIGN OR INVENTION ARE RESERVED.	
APPROVALS	DATE	TITLE DIAGRAM, WIRING	
DRAWN DFS	12-4-13	SCALE	SHEET 1-3
CHECKED MTL	12-4-13	ENG. NO.	GM89728
APPROVED HCC	12-4-13	PLOTTED	D



ENCLOSURE SIDE PANEL

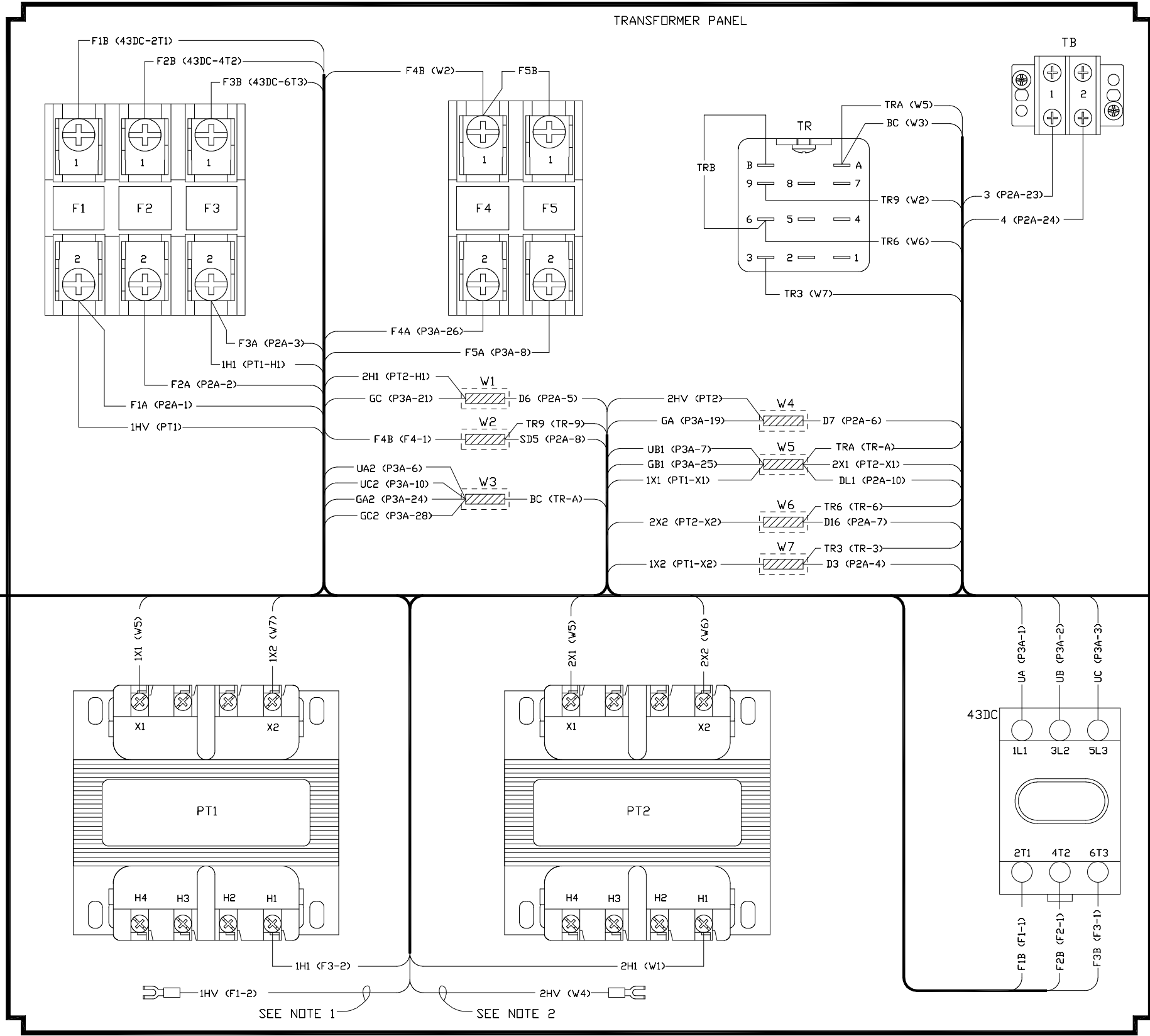
P3A CONNECTIONS

- PIN #1 UA (43DC-1L1)  
2 UB (43DC-3L2)  
3 UC (43DC-5L3)  
4 UN (P2A-11)  
5 UA1 (P2A-12)  
6 UA2 (W3)  
7 UB1 (W5)  
8 F5A (F5-2)  
9 UC1 (P2A-13)  
10 UC2 (W3)  
11 G24 (P2A-14)  
12 N/C  
13 U44 (P2A-15)  
14 N/C  
15 N/C  
16 N/C  
17 N/C  
18 N/C  
19 GA (W4)  
20 GB (P2A-17)  
21 GC (W1)  
22 GN (P2A-16)  
23 GA1 (P2A-18)  
24 GA2 (W3)  
25 GB1 (W5)  
26 F4A (F4-2)  
27 GC1 (P2A-19)  
28 GC2 (W3)  
29 G21 (P2A-20)  
30 N/C  
31 G44 (P2A-21)  
32 B41 (P2A-22)  
33 N/C  
34 N/C  
35 N/C  
36 N/C  
37 N/C



(TO CIRCUIT BREAKERS SHEET 1)

TRANSFORMER PANEL

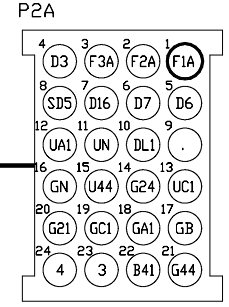


NOTE 1  
208V MODELS: CONNECT THE "1HV" LEAD TO THE H2 TERMINAL ON THE PT1 TRANSFORMER  
220-240V MODELS: CONNECT THE "1HV" LEAD TO THE H3 TERMINAL ON THE PT1 TRANSFORMER  
440-480V MODELS: CONNECT THE "1HV" LEAD TO THE H4 TERMINAL ON THE PT1 TRANSFORMER

NOTE 2  
208V MODELS: CONNECT THE "2HV" LEAD TO THE H2 TERMINAL ON THE PT2 TRANSFORMER  
220-240V MODELS: CONNECT THE "2HV" LEAD TO THE H3 TERMINAL ON THE PT2 TRANSFORMER  
440-480V MODELS: CONNECT THE "2HV" LEAD TO THE H4 TERMINAL ON THE PT2 TRANSFORMER

P2A CONNECTIONS

- PIN #1 F1A (F1-2)  
2 F2A (F2-2)  
3 F3A (F3-2)  
4 D3 (W7)  
5 D6 (W1)  
6 D7 (W4)  
7 D16 (W6)  
8 SD5 (W2)  
9 N/C  
10 DL1 (W5)  
11 UN (P3A-4)  
12 UA1 (P3A-5)  
13 UC1 (P3A-9)  
14 G24 (P3A-11)  
15 U44 (P3A-13)  
16 GN (P3A-22)  
17 GB (P3A-20)  
18 GA1 (P3A-23)  
19 GC1 (P3A-27)  
20 G21 (P3A-29)  
21 G44 (P3A-31)  
22 B41 (P3A-32)  
23 3 (TB-1)  
24 4 (TB-2)



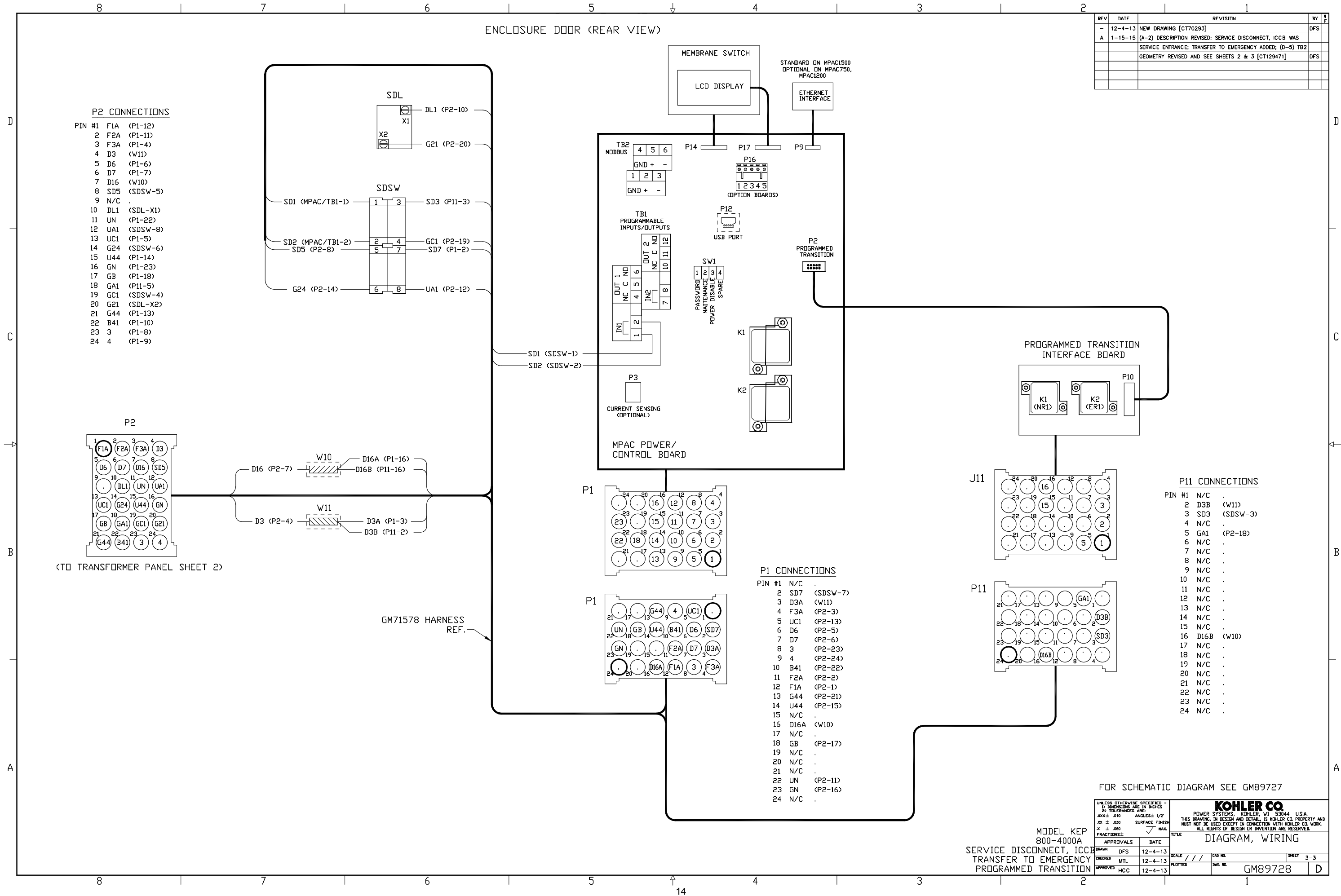
(TO DOOR SHEET 3)

GM71577 HARNESS REF.

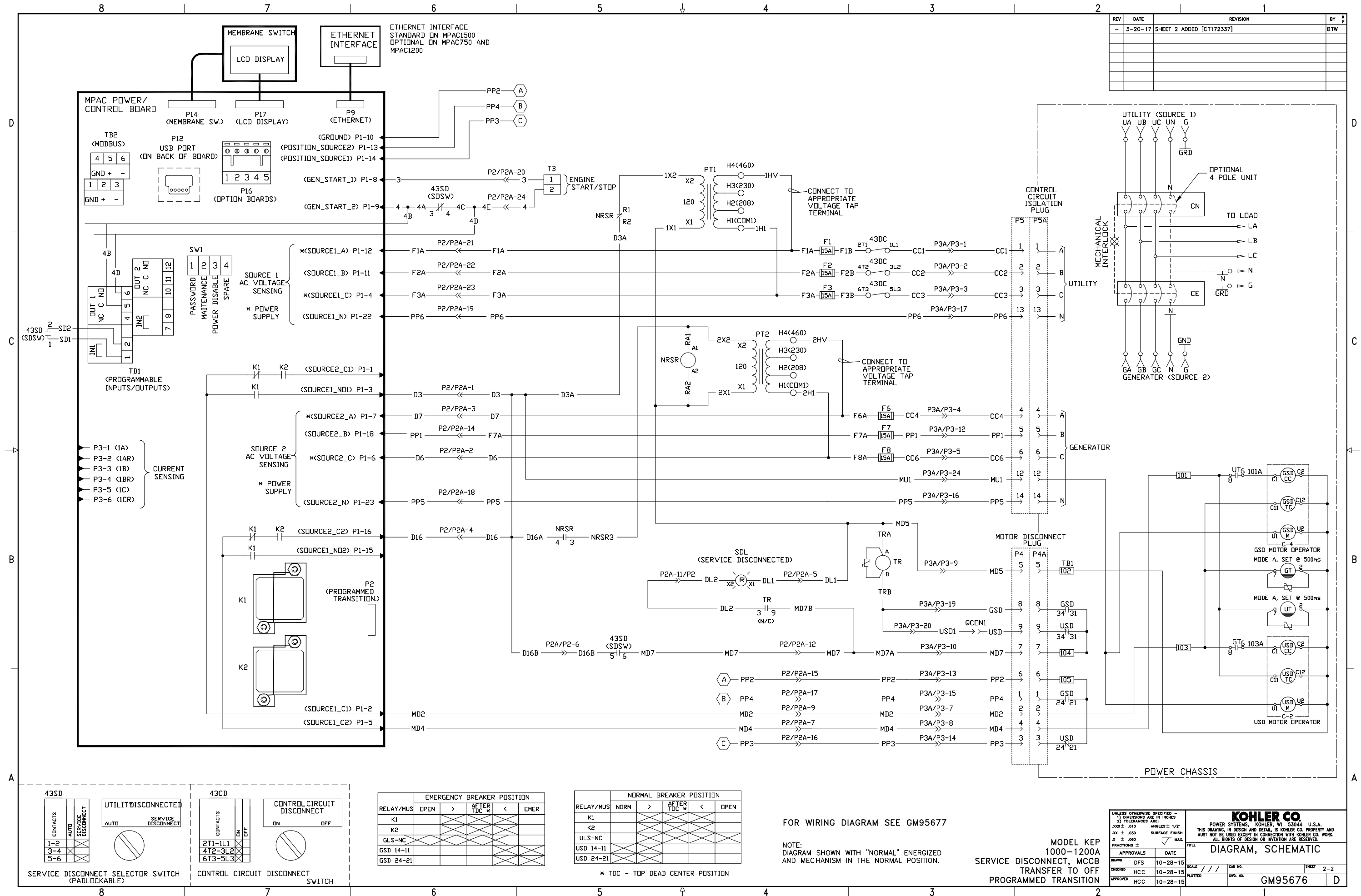
FOR SCHEMATIC DIAGRAM SEE GM89727

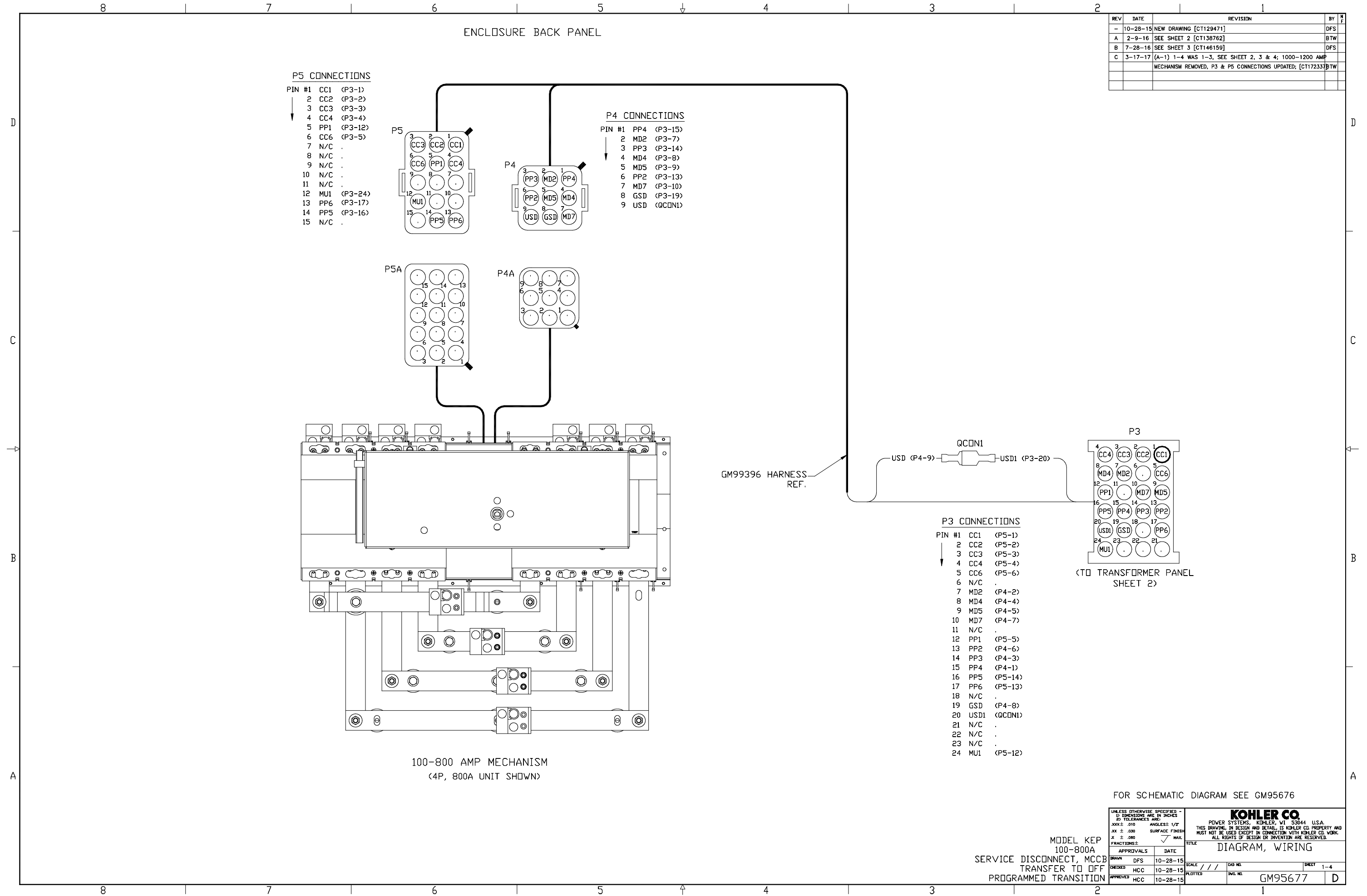
MODEL KEP  
800-4000A  
SERVICE DISCONNECT, ICCB  
TRANSFER TO EMERGENCY  
PROGRAMMED TRANSITION

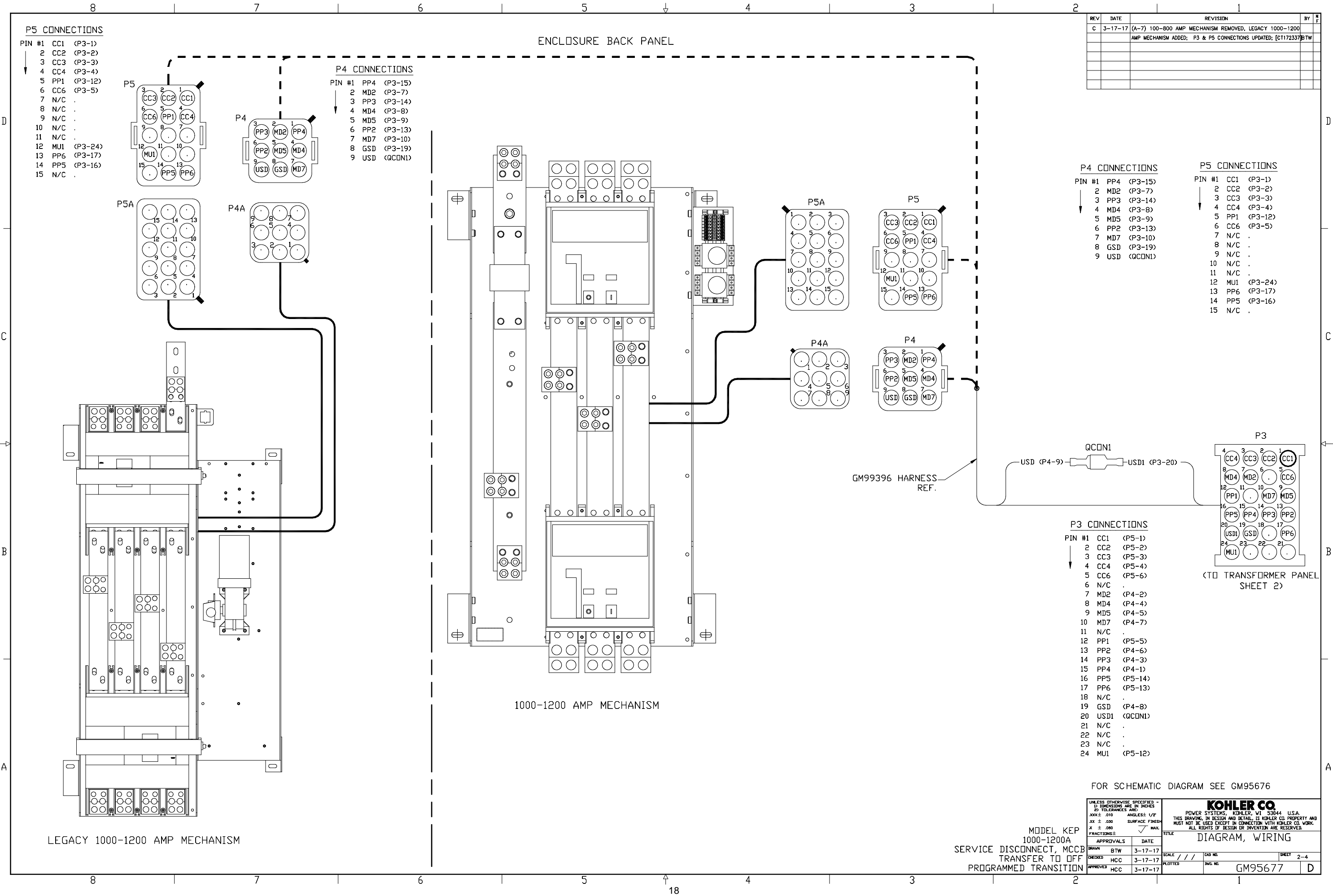
UNLESS OTHERWISE SPECIFIED - DIMENSIONS ARE IN INCHES TOLERANCES ARE: X.XX ± .010 X ± .005 FRACTIONS ± 1/16		ANGLES: 1/2° SURFACE FINISH: MAX.		DRAWN DFS 12-4-13		DATE 12-4-13		SHEET 2-3	
KOHLE CO. POWER SYSTEMS, KOHLER, WI 53044 U.S.A. THIS DRAWING, IN DESIGN AND DETAIL, IS KOHLER CO. PROPERTY AND MUST NOT BE USED EXCEPT IN CONNECTION WITH KOHLER CO. WORK. ALL RIGHTS OF DESIGN OR INVENTION ARE RESERVED.		TITLE DIAGRAM, WIRING		SCALE 1" = 1"		DWG. NO. GM89728		BY DFS	











FOR SCHEMATIC DIAGRAM SEE GM95676

MODEL KEP  
1000-1200A  
SERVICE DISCONNECT, MCCB  
TRANSFER TO OFF  
PROGRAMMED TRANSITION

UNLESS OTHERWISE SPECIFIED - DIMENSIONS ARE IN INCHES TOLERANCES ARE: X.XX ± .010 ANGLES: 1/2° X ± .030 SURFACE FINISH: X ± .080 FRACTIONS: MAX. APPROVALS: BTW 3-17-17 CHECKED: HCC 3-17-17 APPROVED: HCC 3-17-17		DATE: 3-17-17	
DRAWN: BTW 3-17-17		DATE: 3-17-17	
CHECKED: HCC 3-17-17		DATE: 3-17-17	
APPROVED: HCC 3-17-17		DATE: 3-17-17	
SCALE: / / /		SHEET: 2-4	
PLOTTER: / / /		SHEET: 2-4	
DWG. NO. GM95677		D	

ENCLOSURE SIDE PANEL

REV	DATE	REVISION	BY	CHK
C	3-17-17	NEW SHEET 3 ADDED, P3A CONNECTIONS UPDATED.(CT172337)BTW		

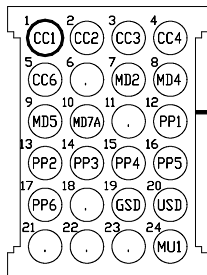
P3A CONNECTIONS

PIN #1	CC1	(43DC-1L1)
2	CC2	(43DC-3L2)
3	CC3	(43DC-5L3)
4	CC4	(F6-1)
5	CC6	(F8-1)
6	N/C	.
7	MD2	(P2A-9)
8	MD4	(P2A-7)
9	MD5	(W4)
10	MD7A	(W6)
11	N/C	.
12	PP1	(F7-1)
13	PP2	(P2A-15)
14	PP3	(P2A-16)
15	PP4	(P2A-17)
16	PP5	(P2A-18)
17	PP6	(P2A-19)
18	N/C	.
19	GSD	(W8)
20	USD	(W8)
21	N/C	.
22	N/C	.
23	N/C	.
24	MU1	(W5)

P2A CONNECTIONS

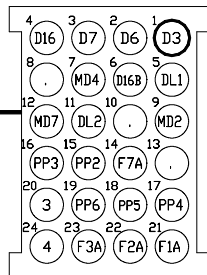
PIN #1	D3	(W5)
2	D6	(W2)
3	D7	(W3)
4	D16	(W5)
5	DL1	(W4)
6	D16B	(W5)
7	MD4	(P3A-8)
8	N/C	.
9	MD2	(P3A-7)
10	N/C	.
11	DL2	(TR-3)
12	MD7	(W6)
13	N/C	.
14	F7A	(F7-2)
15	PP2	(P3A-13)
16	PP3	(P3A-14)
17	PP4	(P3A-15)
18	PP5	(P3A-16)
19	PP6	(P3A-17)
20	3	(TB-1)
21	F1A	(F1-2)
22	F2A	(F2-2)
23	F3A	(F3-2)
24	4	(TB-2)

P3A



(TO CONTACTOR SHEET 1)

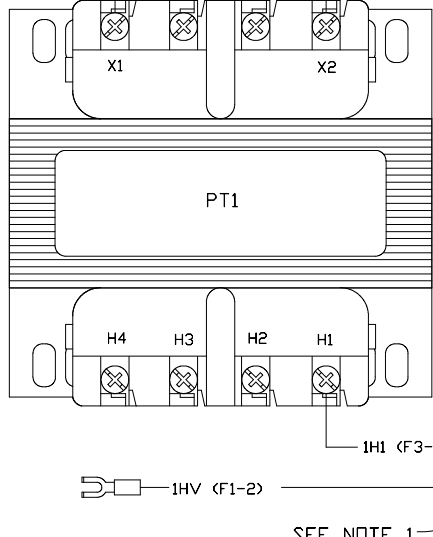
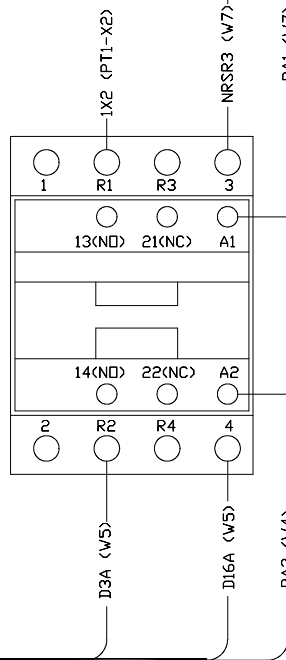
P2A



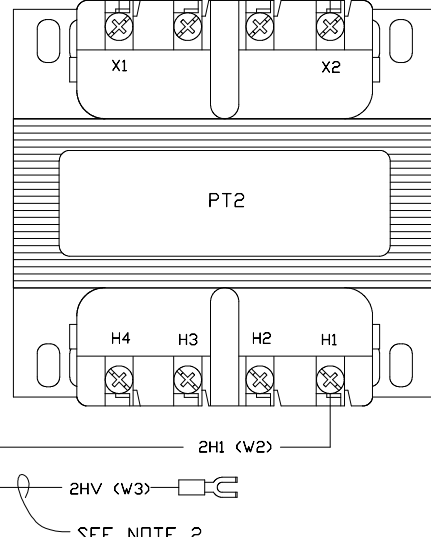
(TO DOOR SHEET 3)

GM95685 HARNESS REF.

NRSR

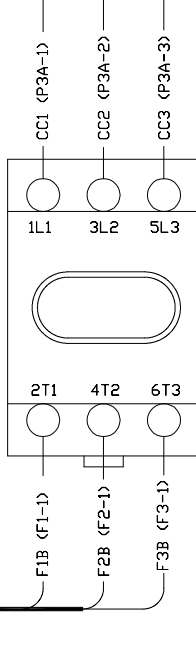


SEE NOTE 1



SEE NOTE 2

43DC



NOTE 1

208V MODELS: CONNECT THE "1HV" LEAD TO THE H2 TERMINAL ON THE PT1 TRANSFORMER  
220-240V MODELS: CONNECT THE "1HV" LEAD TO THE H3 TERMINAL ON THE PT1 TRANSFORMER  
440-480V MODELS: CONNECT THE "1HV" LEAD TO THE H4 TERMINAL ON THE PT1 TRANSFORMER

NOTE 2

208V MODELS: CONNECT THE "2HV" LEAD TO THE H2 TERMINAL ON THE PT2 TRANSFORMER  
220-240V MODELS: CONNECT THE "2HV" LEAD TO THE H3 TERMINAL ON THE PT2 TRANSFORMER  
440-480V MODELS: CONNECT THE "2HV" LEAD TO THE H4 TERMINAL ON THE PT2 TRANSFORMER

FOR SCHEMATIC DIAGRAM SEE GM95676

UNLESS OTHERWISE SPECIFIED - DIMENSIONS ARE IN INCHES TOLERANCES ARE: X.X ± .010 ANGLES: 1/2° X.X ± .030 SURFACE FINISH: MAX. FRACTIONS: 1/16		<b>KOHLER CO.</b> POWER SYSTEMS, KOHLER, WI 53044 U.S.A. THIS DRAWING, IN DESIGN AND DETAIL, IS KOHLER CO. PROPERTY AND MUST NOT BE USED EXCEPT IN CONNECTION WITH KOHLER CO. WORK. ALL RIGHTS OF DESIGN OR INVENTION ARE RESERVED.	
APPROVALS DRAWN BTW CHECKED HCC APPROVED HCC		DATE 3-17-17 3-17-17 3-17-17	
TITLE DIAGRAM, WIRING		SCALE: / / / SHEET 3-4 DWG. NO. GM95677	

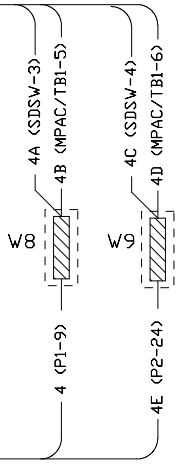
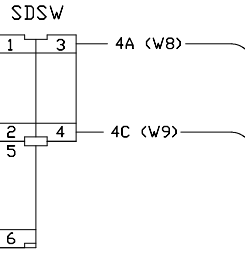
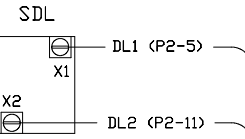
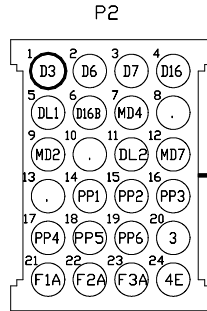
MODEL KEP  
100-1200A  
SERVICE DISCONNECT, MCCB  
TRANSFER TO OFF  
PROGRAMMED TRANSITION

ENCLOSURE DOOR (REAR VIEW)

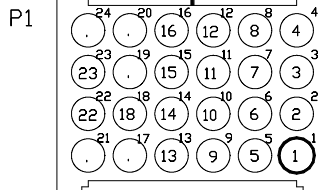
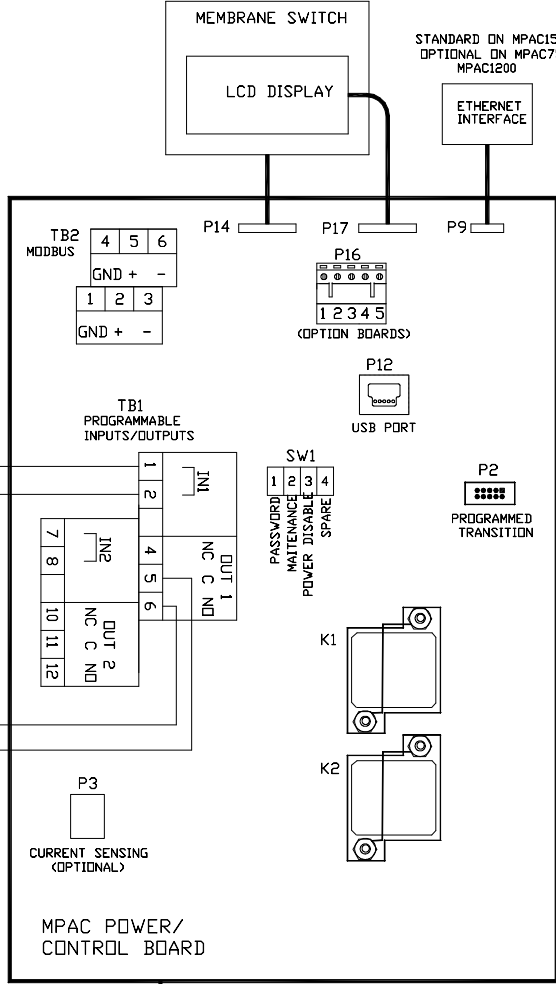
REV	DATE	REVISION	BY	CHK
-	10-28-15	NEW DRAWING [CT129471]	DFS	
A	2-9-16	SEE SHEET 2 [CT138762]	BTW	
B	7-28-16	(C-4) TB1 GEOMETRY RROTTAED 180° [CT146159]	DFS	
C	3-17-17	(A-1) 4-4 WAS 3-3 [CT172337]	BTW	

P2 CONNECTIONS

PIN #1	D3	(P1-3)
2	D6	(P1-6)
3	D7	(P1-7)
4	D16	(P1-16)
5	DL1	(SDL-X1)
6	D16B	(SDSW-5)
7	MD4	(P1-5)
8	N/C	.
9	MD2	(P1-2)
10	N/C	.
11	DL2	(SDL-X2)
12	MD7	(SDSW-6)
13	N/C	.
14	PP1	(P1-18)
15	PP2	(P1-10)
16	PP3	(P1-14)
17	PP4	(P1-13)
18	PP5	(P1-23)
19	PP6	(P1-22)
20	3	(P1-8)
21	F1A	(P1-12)
22	F2A	(P1-11)
23	F3A	(P1-4)
24	4E	(W9)

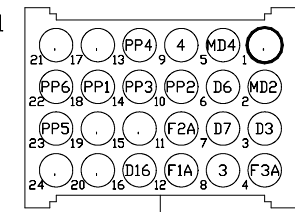


GM95688 HARNESS REF.



P1 CONNECTIONS

PIN #1	N/C	.
2	MD2	(P2-9)
3	D3	(P2-1)
4	F3A	(P2-23)
5	MD4	(P2-7)
6	D6	(P2-2)
7	D7	(P2-3)
8	3	(P2-20)
9	4	(W8)
10	PP2	(P2-15)
11	F2A	(P2-22)
12	F1A	(P2-21)
13	PP4	(P2-17)
14	PP3	(P2-16)
15	N/C	.
16	D16	(P2-4)
17	N/C	.
18	PP1	(P2-14)
19	N/C	.
20	N/C	.
21	N/C	.
22	PP6	(P2-19)
23	PP5	(P2-18)
24	N/C	.

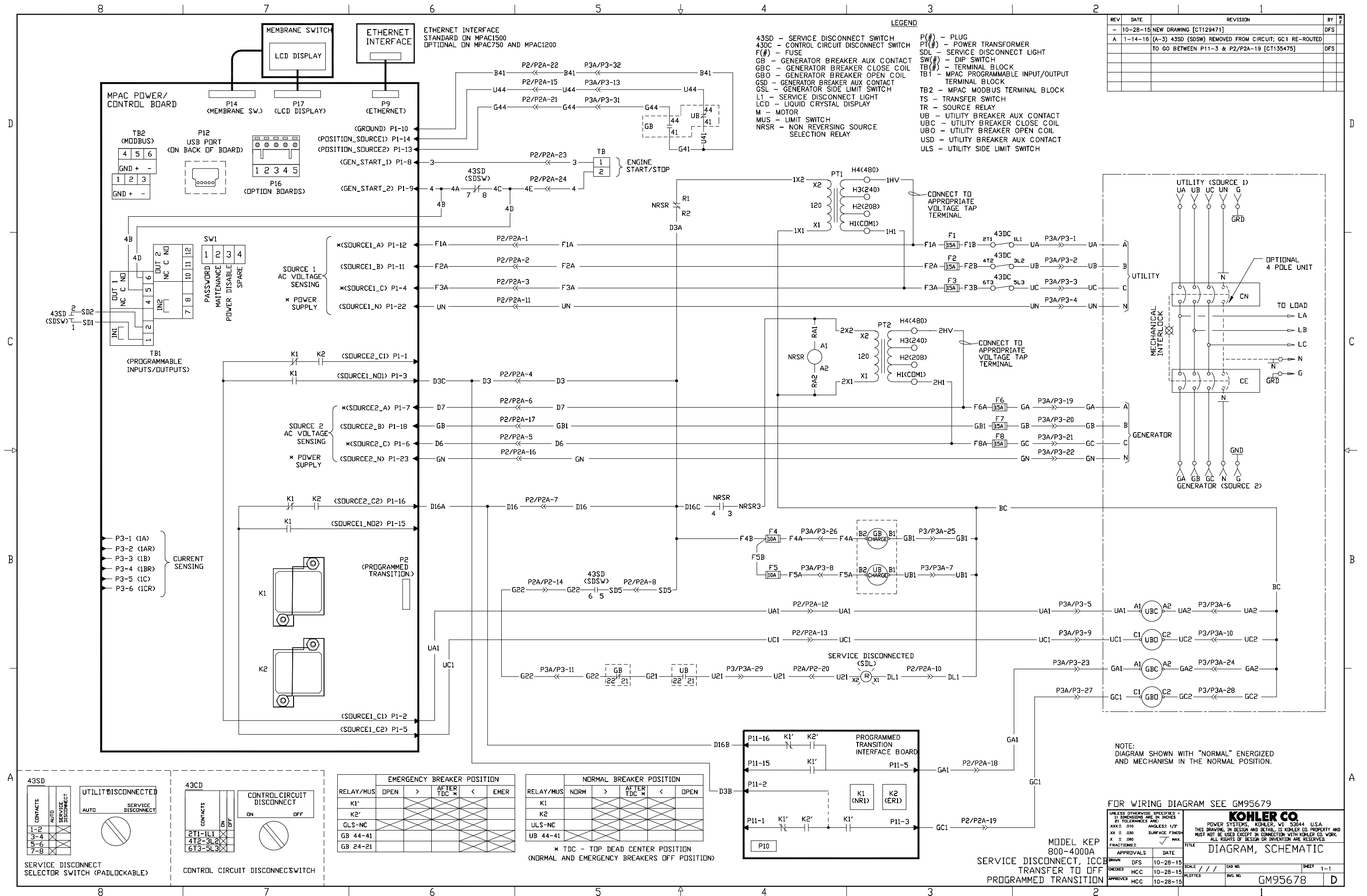


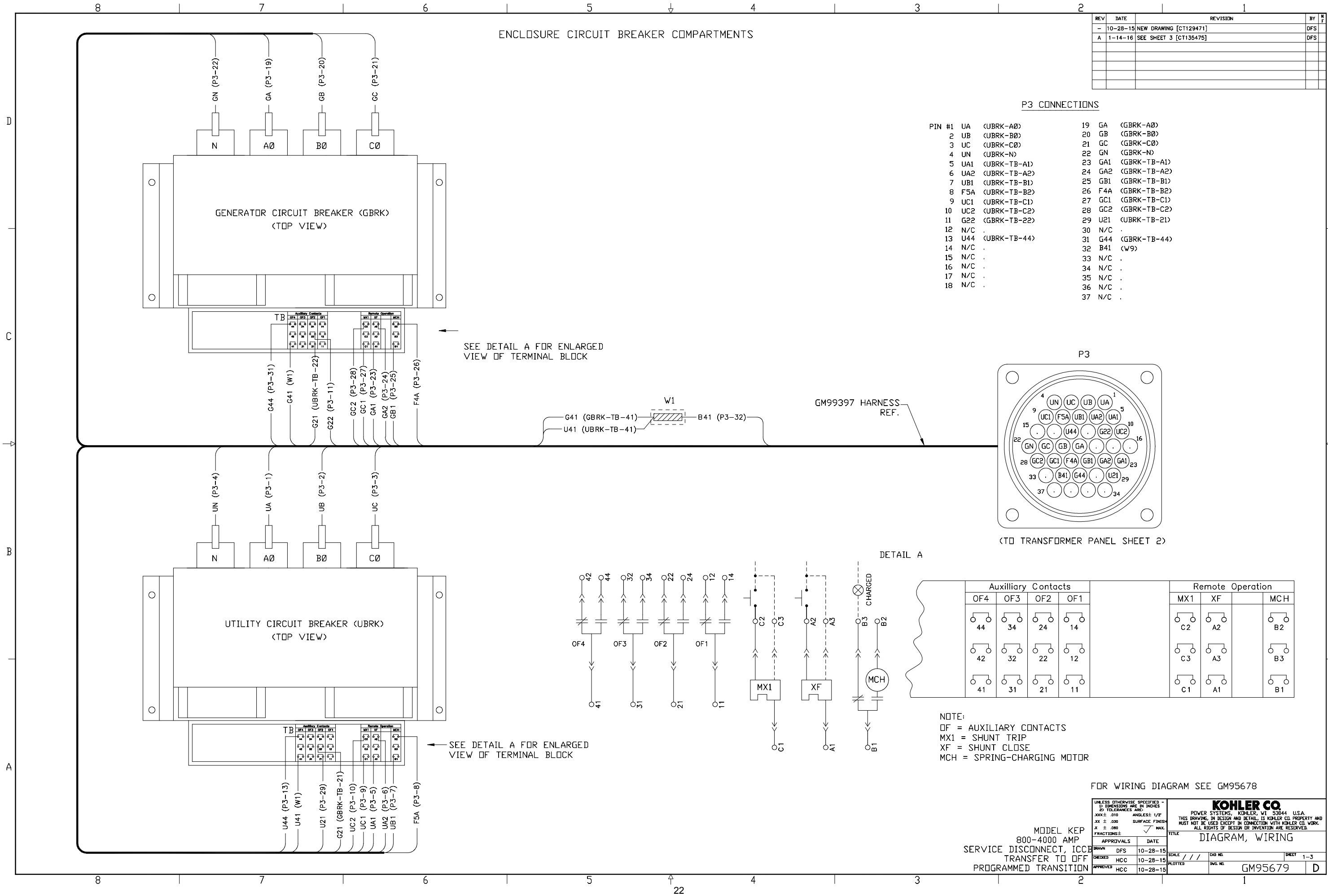
FOR SCHEMATIC DIAGRAM SEE GM95676

MODEL KEP  
100-1200A  
SERVICE DISCONNECT, MCCB  
TRANSFER TO OFF  
PROGRAMMED TRANSITION

UNLESS OTHERWISE SPECIFIED - DIMENSIONS ARE IN INCHES TOLERANCES ARE: XXX ± .010 ANGLES: 1/2° XX ± .030 SURFACE FINISH X ± .080 FRACTIONS ±		KOHLE CO. POWER SYSTEMS, KOHLER, WI 53044 U.S.A. THIS DRAWING, IN DESIGN AND DETAIL, IS KOHLER CO. PROPERTY AND MUST NOT BE USED EXCEPT IN CONNECTION WITH KOHLER CO. WORK. ALL RIGHTS OF DESIGN OR INVENTION ARE RESERVED.	
APPROVALS		DATE	
DRAWN	DFS	10-28-15	
CHECKED	HCC	10-28-15	
APPROVED	HCC	10-28-15	
TITLE		DIAGRAM, WIRING	
SCALE		///	SHEET 4-4
DWG. NO.		GM95677	



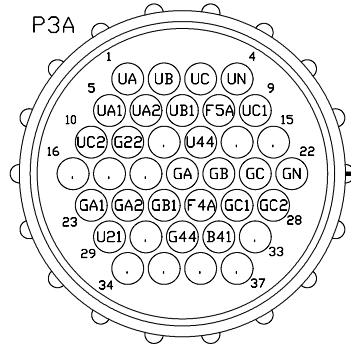




ENCLOSURE SIDE PANEL

P3A CONNECTIONS

PIN #1	UA	(43DC-1L1)
2	UB	(43DC-3L2)
3	UC	(43DC-5L3)
4	UN	(P2A-11)
5	UA1	(P2A-12)
6	UA2	(W3)
7	UB1	(W5)
8	F5A	(F5-2)
9	UC1	(P2A-13)
10	UC2	(W3)
11	G22	(P2A-14)
12	N/C	.
13	U44	(P2A-15)
14	N/C	.
15	N/C	.
16	N/C	.
17	N/C	.
18	N/C	.
19	GA	(F6-1)
20	GB	(F7-1)
21	GC	(F8-1)
22	GN	(P2A-16)
23	GA1	(P2A-18)
24	GA2	(W3)
25	GB1	(W5)
26	F4A	(F4-2)
27	GC1	(P2A-19)
28	GC2	(W3)
29	U21	(P2A-20)
30	N/C	.
31	G44	(P2A-21)
32	B41	(P2A-22)
33	N/C	.
34	N/C	.
35	N/C	.
36	N/C	.
37	N/C	.

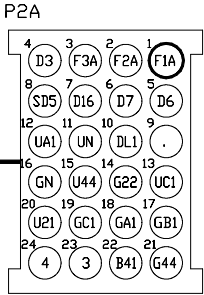


(TO CIRCUIT BREAKERS SHEET 1)

REV	DATE	REVISION	BY	CHK
-	10-28-15	NEW DRAWING [CT129471]	DFS	
A	1-14-16	SEE SHEET 3 [CT135475]	DFS	

P2A CONNECTIONS

PIN #1	F1A	(F1-2)
2	F2A	(F2-2)
3	F3A	(F3-2)
4	D3	(W7)
5	D6	(W2)
6	D7	(W4)
7	D16	(W7)
8	SD5	(W7)
9	N/C	.
10	DL1	(W5)
11	UN	(P3A-4)
12	UA1	(P3A-5)
13	UC1	(P3A-9)
14	G22	(P3A-11)
15	U44	(P3A-13)
16	GN	(P3A-22)
17	GB1	(F7-2)
18	GA1	(P3A-23)
19	GC1	(P3A-27)
20	U21	(P3A-29)
21	G44	(P3A-31)
22	B41	(P3A-32)
23	3	(TB-1)
24	4	(TB-2)



(TO DOOR SHEET 3)

GM95686 HARNESS REF.

FOR WIRING DIAGRAM SEE GM95678

NOTE 1  
208V MODELS: CONNECT THE "1HV" LEAD TO THE H2 TERMINAL ON THE PT1 TRANSFORMER  
220-240V MODELS: CONNECT THE "1HV" LEAD TO THE H3 TERMINAL ON THE PT1 TRANSFORMER  
440-480V MODELS: CONNECT THE "1HV" LEAD TO THE H4 TERMINAL ON THE PT1 TRANSFORMER

NOTE 2  
208V MODELS: CONNECT THE "2HV" LEAD TO THE H2 TERMINAL ON THE PT2 TRANSFORMER  
220-240V MODELS: CONNECT THE "2HV" LEAD TO THE H3 TERMINAL ON THE PT2 TRANSFORMER  
440-480V MODELS: CONNECT THE "2HV" LEAD TO THE H4 TERMINAL ON THE PT2 TRANSFORMER

MODEL KEP  
800-4000A  
SERVICE DISCONNECT, ICCB  
TRANSFER TO OFF  
PROGRAMMED TRANSITION

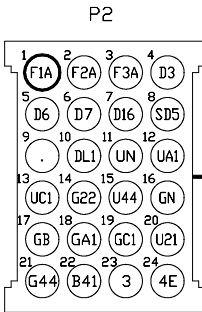
UNLESS OTHERWISE SPECIFIED - 1) DIMENSIONS ARE IN INCHES 2) TOLERANCES ARE: XXX ± .010 ANGLES: 1/2° XX ± .030 SURFACE FINISH X ± .080 FRACTIONS: MAX. APPROVALS DATE DRAWN DFS 10-28-15 CHECKED HCC 10-28-15 APPROVED HCC 10-28-15		KOHLER CO. POWER SYSTEMS, KOHLER, WI 53044 U.S.A. THIS DRAWING, IN DESIGN AND DETAIL, IS KOHLER CO. PROPERTY AND MUST NOT BE USED EXCEPT IN CONNECTION WITH KOHLER CO. WORK. ALL RIGHTS OF DESIGN OR INVENTION ARE RESERVED. TITLE DIAGRAM, WIRING SCALE: / / / CADD NO. PLOTTER NO. SHEET 2-3 GM95679 D	
---	--	--	--

ENCLOSURE DOOR (REAR VIEW)

REV	DATE	REVISION	BY	CHK
-	10-28-15	NEW DRAWING [CT129471]	DFS	
A	1-14-16	(B-1) P11-3; GC1 (P2-19) WAS SD3 (SDSW-3); (C-8)		
		P2-19: GC1 (P11-3) WAS GC1 (SDSW-4); (D-7) SDSW		
		TERMINAL 3: SD3 (P11-3) REMOVED; SDSW TERMINAL 4:		
		GC1 (P2-19) REMOVED [CT135475]	DFS	

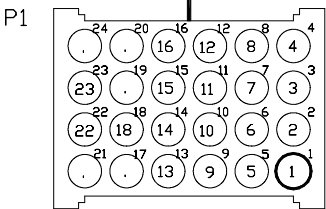
P2 CONNECTIONS

PIN #1	F1A	(P1-12)
2	F2A	(P1-11)
3	F3A	(P1-4)
4	D3	(W11)
5	D6	(P1-6)
6	D7	(P1-7)
7	D16	(W10)
8	SD5	(SDSW-5)
9	N/C	.
10	DL1	(SDL-X1)
11	UN	(P1-22)
12	UA1	(P1-2)
13	UC1	(P1-5)
14	G22	(SDSW-6)
15	U44	(P1-14)
16	GN	(P1-23)
17	GB	(P1-18)
18	GA1	(P11-5)
19	GC1	(P11-3)
20	U21	(SDL-X2)
21	G44	(P1-13)
22	B41	(P1-10)
23	3	(P1-8)
24	4E	(W12)



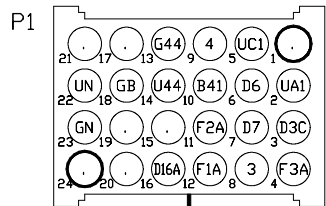
(TO TRANSFORMER PANEL SHEET 2)

GM95689 HARNESS REF.

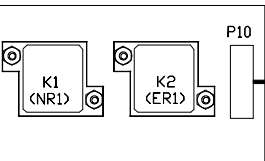


P1 CONNECTIONS

PIN #1	N/C	.
2	UA1	(P2-12)
3	D3C	(W11)
4	F3A	(P2-3)
5	UC1	(P2-13)
6	D6	(P2-5)
7	D7	(P2-6)
8	3	(P2-23)
9	4	(W13)
10	B41	(P2-22)
11	F2A	(P2-2)
12	F1A	(P2-1)
13	G44	(P2-21)
14	U44	(P2-15)
15	N/C	.
16	D16A	(W10)
17	N/C	.
18	GB	(P2-17)
19	N/C	.
20	N/C	.
21	N/C	.
22	UN	(P2-11)
23	GN	(P2-16)
24	N/C	.

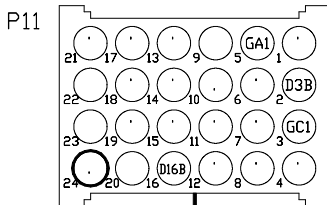
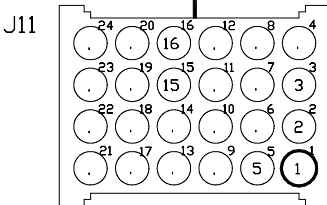


PROGRAMMED TRANSITION INTERFACE BOARD



P11 CONNECTIONS

PIN #1	N/C	.
2	D3B	(W11)
3	GC1	(P2-19)
4	N/C	.
5	GA1	(P2-18)
6	N/C	.
7	N/C	.
8	N/C	.
9	N/C	.
10	N/C	.
11	N/C	.
12	N/C	.
13	N/C	.
14	N/C	.
15	N/C	.
16	D16B	(W10)
17	N/C	.
18	N/C	.
19	N/C	.
20	N/C	.
21	N/C	.
22	N/C	.
23	N/C	.
24	N/C	.



FOR WIRING DIAGRAM SEE GM95678

MODEL KEP  
800-4000A  
SERVICE DISCONNECT, ICCB  
TRANSFER TO OFF  
PROGRAMMED TRANSITION

UNLESS OTHERWISE SPECIFIED - DIMENSIONS ARE IN INCHES TOLERANCES ARE: X.X ± .010 ANGLES: 1/2° X.X ± .030 SURFACE FINISH X ± .000 FRACTIONS: 1/16" MAX.		KOHLER CO. POWER SYSTEMS, KOHLER, WI 53044 U.S.A. THIS DRAWING, IN DESIGN AND DETAIL, IS KOHLER CO. PROPERTY AND MUST NOT BE USED EXCEPT IN CONNECTION WITH KOHLER CO. WORK. ALL RIGHTS OF DESIGN OR INVENTION ARE RESERVED.	
APPROVALS		DATE	
DRAWN	DFS	10-28-15	
CHECKED	HCC	10-28-15	
APPROVED	HCC	10-28-15	
TITLE		DIAGRAM, WIRING	
SCALE		3-3	
DWG. NO.		GM95679	



**TP-6919 6/17b**

© 2014, 2016, 2017 by Kohler Co. All rights reserved.

# **KOHLER®** Power Systems

KOHLER CO. Kohler, Wisconsin 53044  
Phone 920-457-4441, Fax 920-459-1646  
For the nearest sales/service outlet in the  
US and Canada, phone 1-800-544-2444  
[KOHLERPower.com](http://KOHLERPower.com)

Kohler Power Systems  
Asia Pacific Headquarters  
7 Jurong Pier Road  
Singapore 619159  
Phone (65) 6264-6422, Fax (65) 6264-6455