

SUPPLEMENT

Original Issue Date: 4/14

Model: 20RESB

Market: Residential/Light Commercial

Subject: Supplement to Installation Manual TP-6925 and
Operation Manual TP-6926

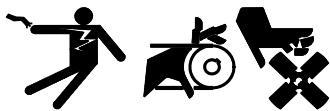
Introduction

Use this information as a supplement to 20RESB Installation Manual TP-6925, version 1/14, and Operation Manual TP-6926, version 1/14. Refer to the generator operation and installation manuals for additional safety precautions, service assistance information, operation, and troubleshooting information.

Safety Precautions

Observe the following safety precautions while resetting the thermostat.

WARNING



**Accidental starting.
Can cause severe injury or death.**

Disconnect the battery cables before working on the generator set. Remove the negative (-) lead first when disconnecting the battery. Reconnect the negative (-) lead last when reconnecting the battery.

Disabling the generator set. Accidental starting can cause severe injury or death. Before working on the generator set or connected equipment, disable the generator set as follows: (1) Move the generator set master switch to the OFF position. (2) Disconnect the power to the battery charger. (3) Remove the battery cables, negative (-) lead first. Reconnect the negative (-) lead last when reconnecting the battery. Follow these precautions to prevent starting of the generator set by an automatic transfer switch, remote start/stop switch, or engine start command from a remote computer.

Thermostat Information

The Model 20RESB generator includes a resettable thermostat in the air intake compartment. The

thermostat detects excess heat inside the enclosure. If the thermostat trips, the generator will shut down and the controller will display a fault (underspeed, underfrequency, or undervoltage). If the thermostat trips for some reason other than high temperature (i.e. a nuisance trip), follow these steps to reset the thermostat.

Procedure to Reset the Thermostat

See Figure 5 on page 6 for the thermostat location.

1. Disconnect the utility power to the generator by opening (turning OFF) the corresponding circuit breaker at the building's distribution panel.
2. Open the enclosure roof and secure it with the roof stay on the left side of the enclosure.
3. Remove the service door from the right side of the enclosure by removing the plug and two screws. Lift the door up and off. Then remove four screws and remove the front panel.
4. Disconnect the generator set engine starting battery(ies), negative (-) lead first.
5. Press the button on the thermostat to reset it.
6. Reconnect the generator set engine starting battery, negative (-) lead last.
7. Replace the air intake panel and service door.
8. Reconnect utility power to the generator set by closing the circuit breaker in the distribution panel.
9. Reset the fault on the RDC2 controller. Refer to the generator Operation Manual for instructions, if necessary.

Drawings and Diagrams

See pages 2 through 5 for updated drawings and diagrams.

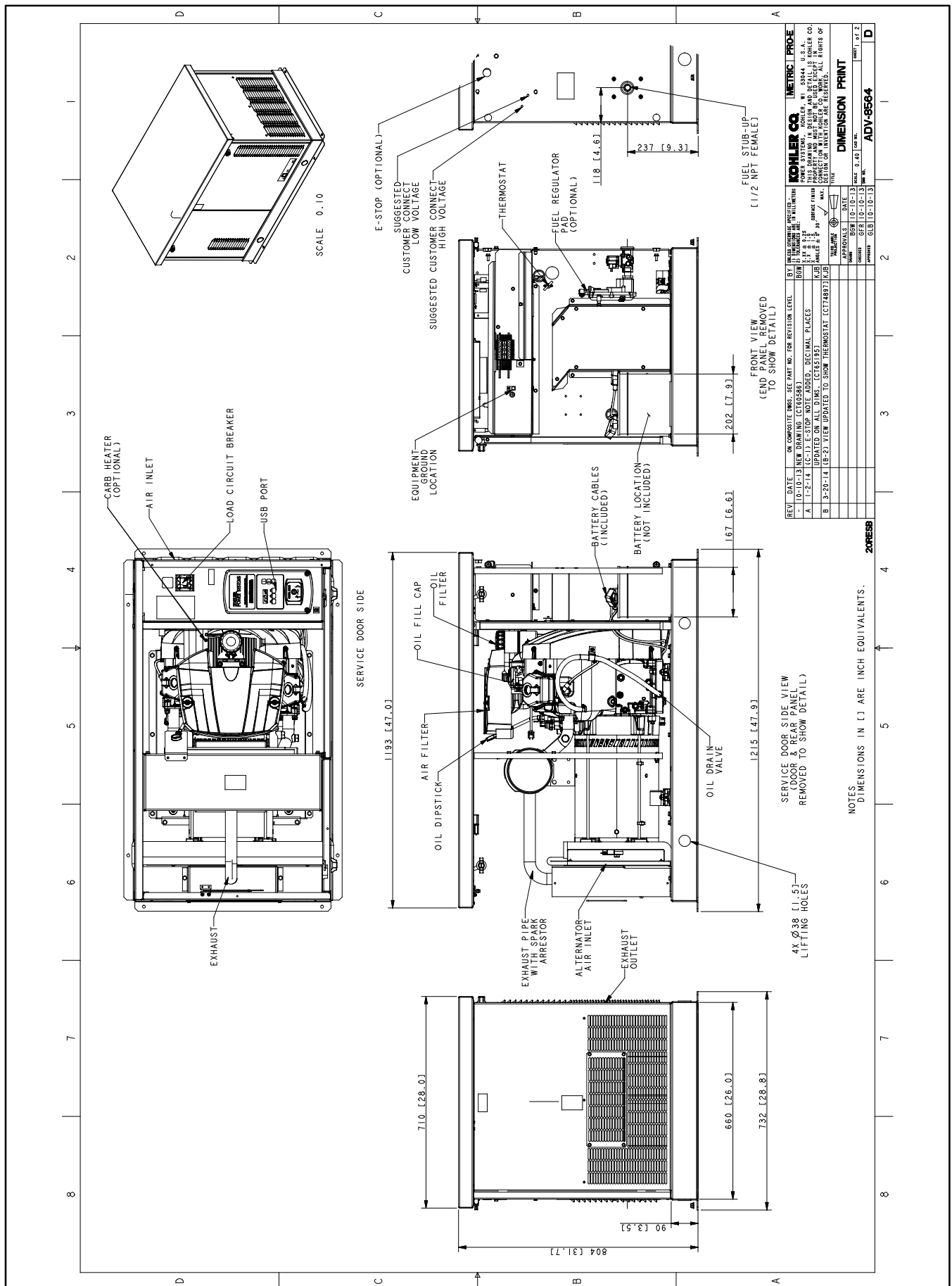


Figure 1 Dimension Drawing (Thermostat Location), ADV-8564 Sheet 1

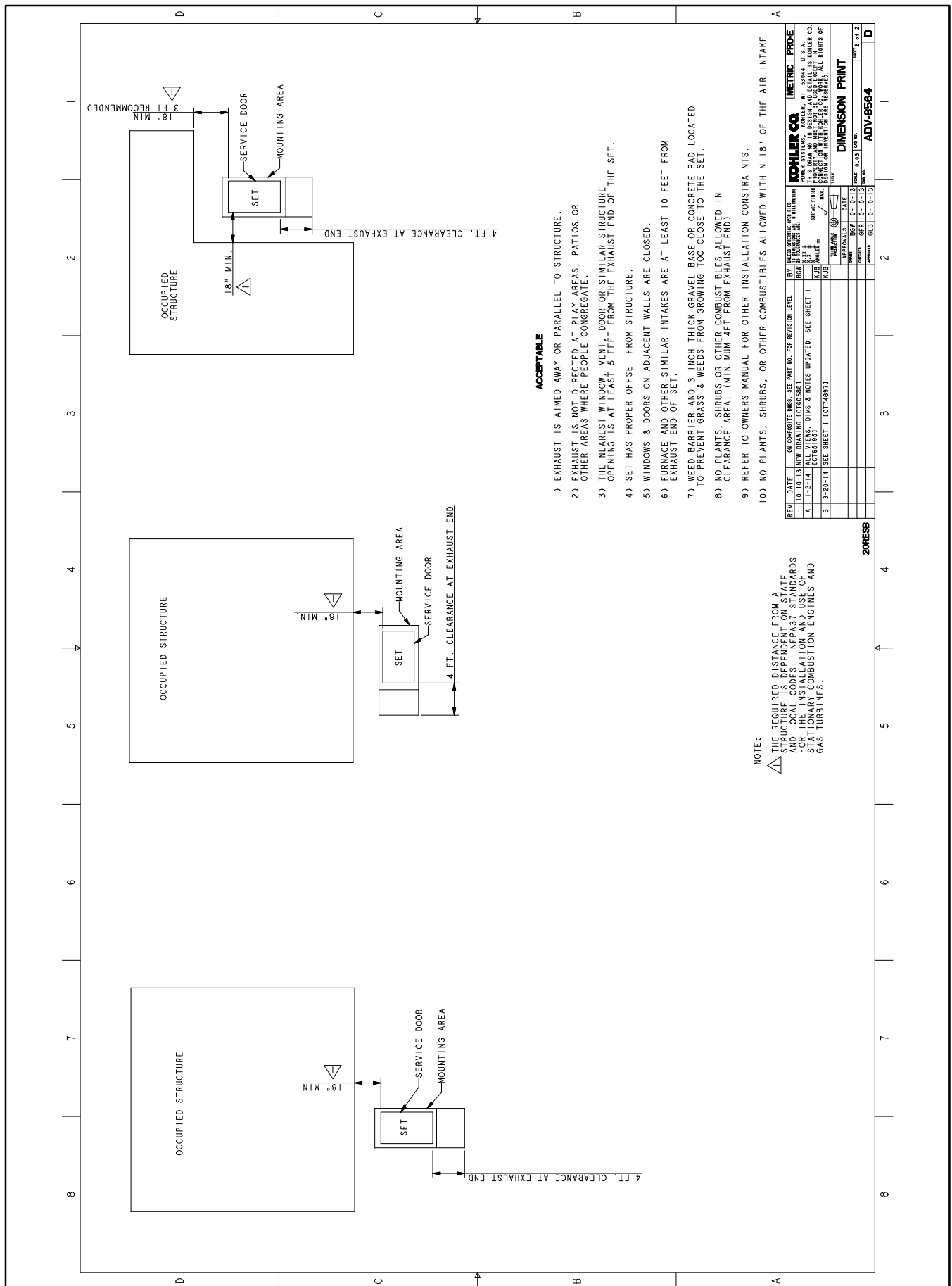


Figure 2 Dimension Drawing (Minimum Clearance from Structure), ADV-8564 Sheet 2

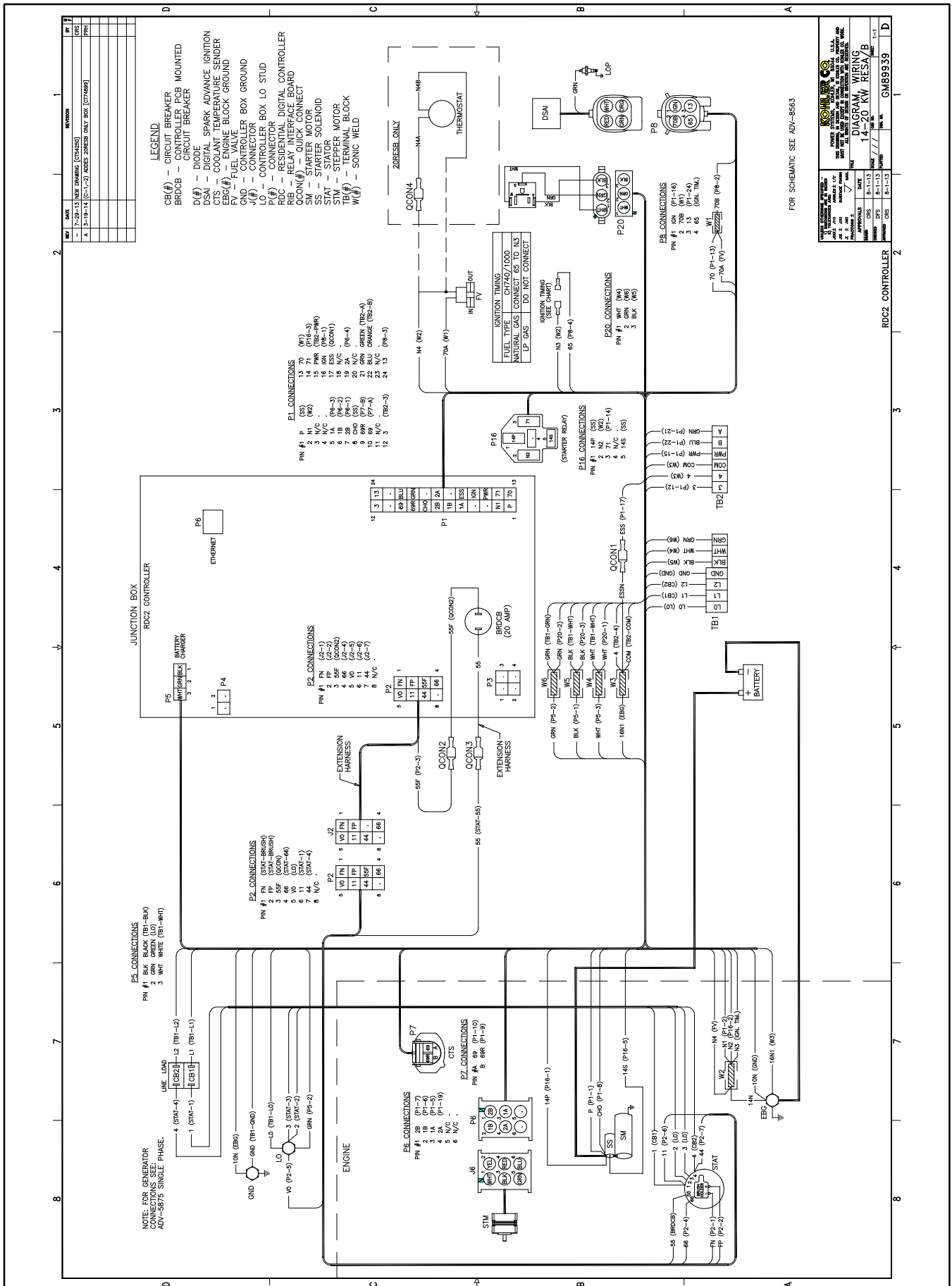


Figure 4 Schematic Diagram, ADV-8563

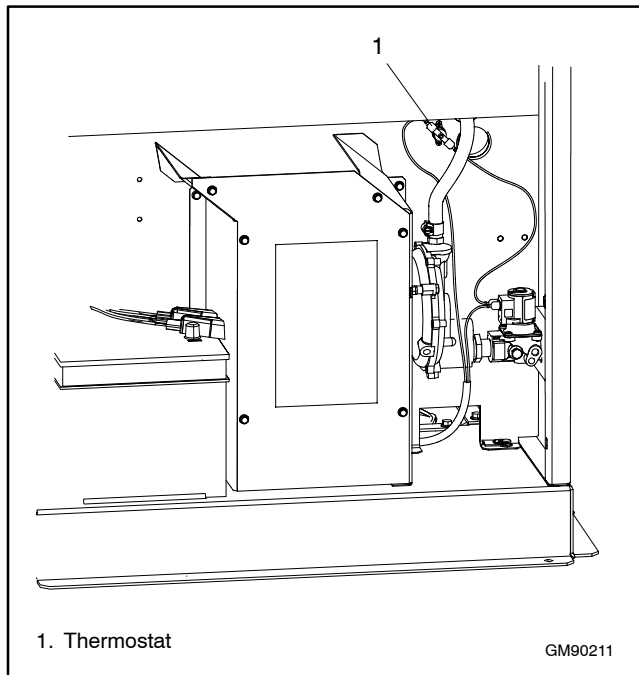


Figure 5 Thermostat Location

Availability is subject to change without notice. Kohler Co. reserves the right to change the design or specifications without notice and without any obligation or liability whatsoever. Contact your local Kohler® generator set distributor for availability.

© 2014 by Kohler Co. All rights reserved.