
INSTALLATION INSTRUCTIONS

Original Issue Date: 4/96

Model: 135/150ROZJ (John Deere 6081 Engine)

Market: Industrial

Subject: Sound Shield Enclosure Kits PA-336695, 336695

Introduction

Sound shield enclosure provides sound dampening when operating the generator set.

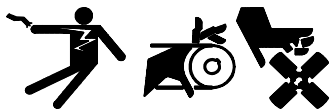
The sound shield enclosure is preassembled at the factory and some final assembly is required at the time of installation. See Figure 2 for sound shield enclosure overall dimensions.

Read the entire installation procedure and compare the kit parts with the parts list at the end of this publication before beginning installation. Perform the steps in the order shown.

Safety Precautions

Observe the following safety precautions while installing the kit.

⚠ WARNING



**Accidental starting.
Can cause severe injury or death.**

Disconnect the battery cables before working on the generator set. Remove the negative (-) lead first when disconnecting the battery. Reconnect the negative (-) lead last when reconnecting the battery.

Disabling the generator set. Accidental starting can cause severe injury or death. Before working on the generator set or connected equipment, disable the generator set as follows: (1) Move the generator set master switch to the OFF position. (2) Disconnect the power to the battery charger. (3) Remove the battery cables, negative (-) lead first. Reconnect the negative (-) lead last when reconnecting the battery. Follow these precautions to prevent starting of the generator set by an automatic transfer switch, remote start/stop switch, or engine start command from a remote computer.

Installation Procedure

1. Place the generator set master switch in the OFF position.
2. Disconnect the power to the battery charger, if equipped.
3. Disconnect the generator set engine starting battery(ies), negative (-) lead first.
4. Mark the sound shield enclosure access doors so they can be installed in their original locations. Doors and openings are factory-aligned for fit and appearance.
5. Remove the sound shield enclosure access doors.
6. Remove the screws that attach the sound shield enclosure to the shipping pallet.
7. Remove the drill screws attaching the radiator duct flange, if installed, to the radiator shroud. See Figure 1. Do not remove the bolts attaching the radiator duct flange to the sound shield enclosure.
8. Remove any shipped-loose components, packing material, and literature from inside the sound shield enclosure. If the exhaust piping is preassembled, disconnect the exhaust system at the exhaust manifold.
9. Check the weight of the sound shield enclosure and choose lifting equipment capable of handling the weight. Consult the respective sound shield enclosure spec sheet for the weights. Place the sound shield enclosure on a solid flat surface until installed over the generator set.

Hoist the sound shield enclosure, including the silencer, at each eyebolt on top of the enclosure. Lift slowly to prevent damage to the generator set and/or the sound enclosure. Because the silencer is mounted to the sound shield enclosure, the sound shield enclosure may require balancing to achieve vertical removal. Use load levelers as necessary to balance the load. If the exhaust system is preassembled, use care that loose exhaust does not damage the engine and/or the sound shield enclosure.

10. Consult generator set spec sheet for generator set weights. Use lifting equipment capable of handling the weight to lift generator set and place it on the mounting base. Mount generator set to mounting base as required. Remove lifting equipment from generator set.
11. Raise sound shield enclosure and place it over generator set. Observe each corner for adequate clearance while carefully lowering sound shield enclosure. Check that exhaust system is correctly aligned if sound shield enclosure has preassembled exhaust piping. Remove hoist equipment from sound shield enclosure.
12. Align radiator duct flange to radiator shroud. Attach radiator duct flange to radiator shroud using four drill screws (X-794-1). Pre-drill mounting holes if an impact wrench is not available. See Figure 1.
13. Secure sound shield enclosure to mounting base. See Figure 3 for hole locations.

Note: The exhaust system may be partially preassembled on some sound shield enclosures.

14. Starting at exhaust muffler install exhaust pipes (336249, 336694, 336250). At each connection install exhaust clamps (289372). Install exhaust clamp (276949) at exhaust manifold outlet. Do not yet tighten exhaust clamps. See Figure 4.

Final tighten all exhaust clamps with each section installed and exhaust pipe centered in hole of sound shield enclosure.

15. Install fiberglass exhaust wrap (19000 09400) over exhaust piping starting at exhaust manifold. Overlap exhaust wrap about 1/3 to 1/2 of the material width. Use hose clamp (X-426-5) to secure the beginning of the exhaust wrap. The end of the exhaust wrap must stop at or beyond the point where exhaust the pipe goes through the hole in the sound shield enclosure. Secure end of exhaust wrap with second hose clamp (X-426-5).
16. Finalize installation of generator set. Install battery rack and cables. Connect fuel supply and return line to generator set. Make all AC connections and replace junction box panels. Connect all remote electrical wiring (remote emergency stop, remote annunciator, etc.).
17. Install all sound shield enclosure access doors in their original locations. If required, readjust doors for fit and appearance.
18. Check that all hardware has been tightened.
19. Check that the generator set master switch is in the OFF position.
20. Reconnect the generator set engine starting battery, negative (-) lead last.
21. Reconnect power to the battery charger, if equipped.

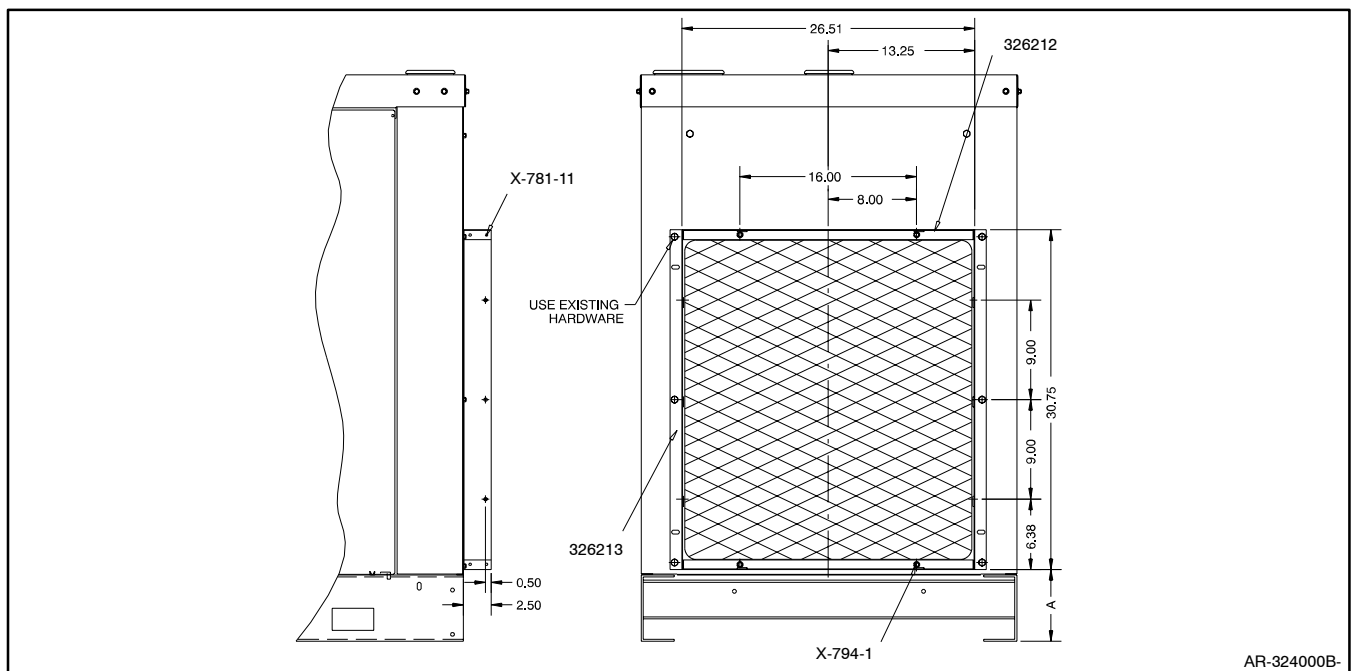
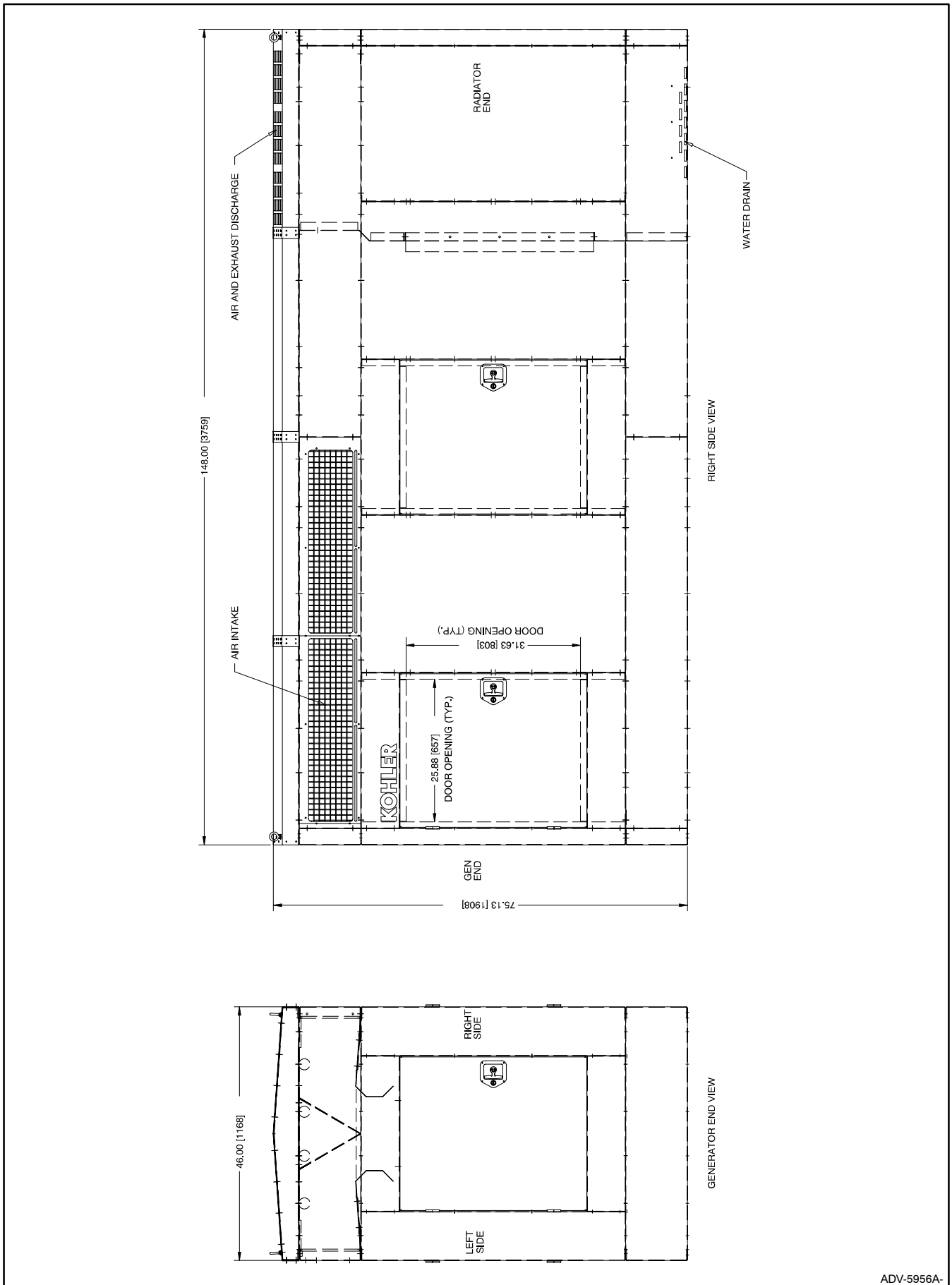


Figure 1 Radiator Duct Flange Mounting



ADV-5956A-

Figure 2 Sound Shield Dimension Drawing

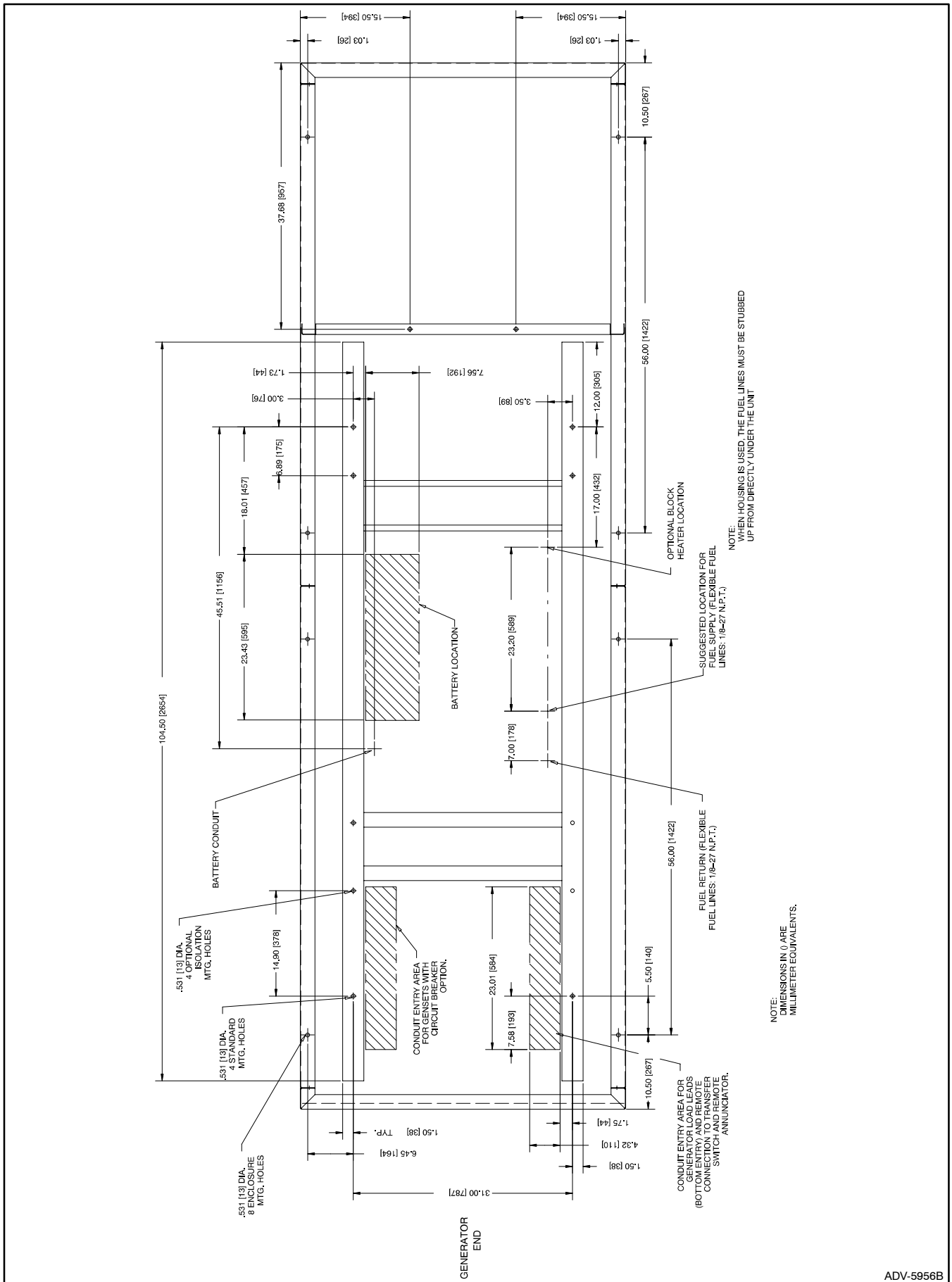


Figure 3 Sound Shield Enclosure Generator Floor Mounting Plan

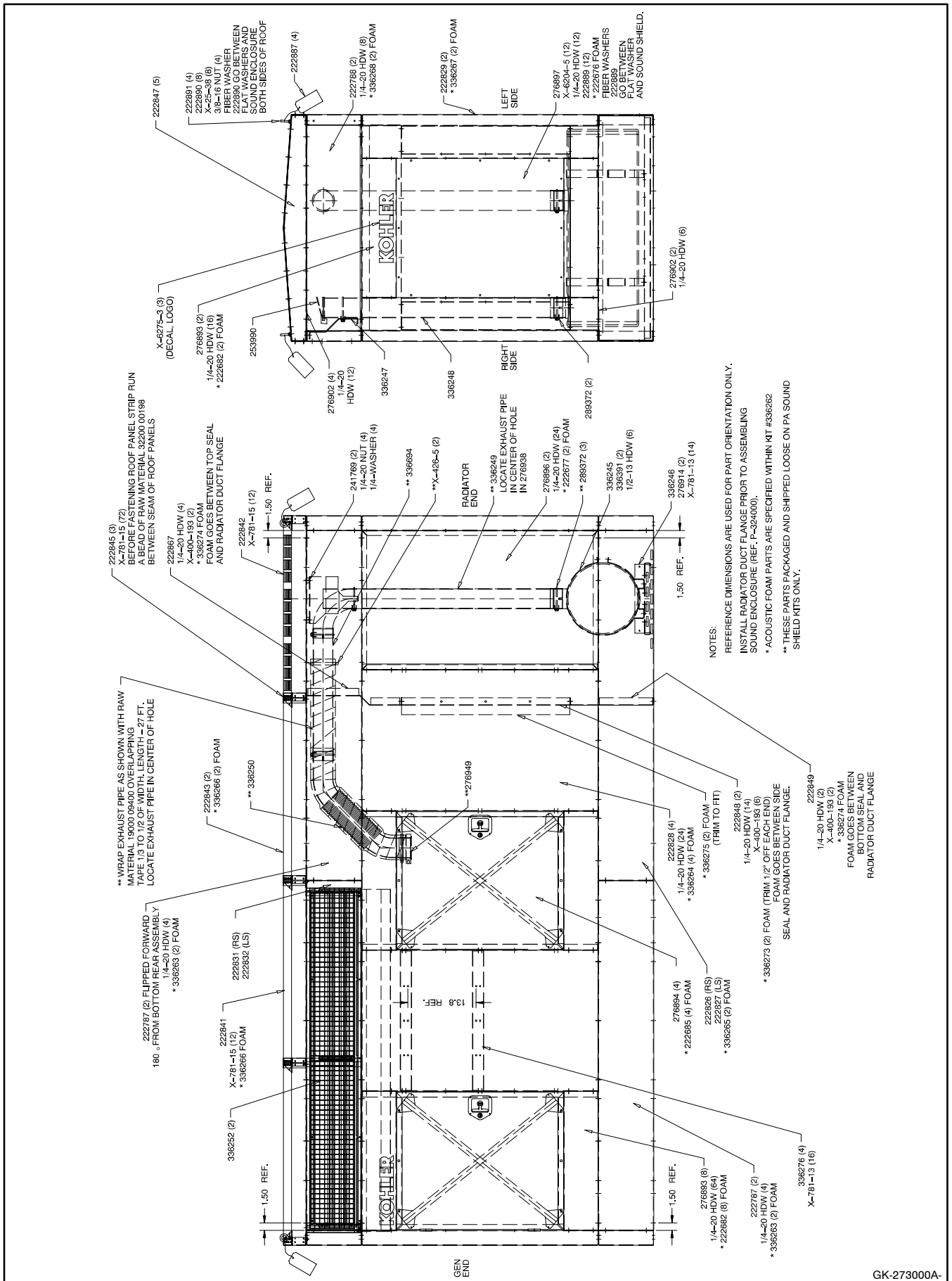


Figure 4 Sound Shield Assembly

Parts List

Sound Shield Kits

Kits: PA-336695, 336695		
Qty.	Description	Part Numbers
8	Washer, plain	X-25-38
10	Spacer	X-400-193
2	Clamp, hose, 4.875/3.62	X-426-5
2	Tie, cable	X-468-7
8	Rivet, pop, 1/8 in. aluminum/steel	X-781-11
90	Rivet, pop, 1/8 in. stainless	X-781-13
152	Rivet, pop, 3/8 in. aluminum/stainless	X-781-15
4	Screw, drill	X-794-1
12	Nut, retainer	X-6204-5
3	Logo, Kohler	X-6275-3
32	Foam, seal tape, ft.	19000 08100
26	Insulation, fiberglass, ft.	19000 08118
53	Foam, PVC seal tape, ft.	19010 08118
1	Pipe, exhaust	336694
4	Channel, solid	222787
4	Channel, solid	222788
1	Channel, drain	222826
1	Channel, drain	222827
4	Support, side door	222828
4	Support, corner	222829
1	Channel, air intake	222831
1	Channel, air intake	222832
1	Panel, roof	222841
1	Panel, roof	222842
2	Panel, roof	222843
3	Strip, roof	222845
5	Support, roof	222847
2	Seal, side	222848
1	Seal, bottom	222849
1	Seal, top	222867
2	Support, baffle	222868
4	Tag, instruction	222887
12	Washer, fiber	222889
8	Washer, fiber	222890

Kits: PA-336695, 336695		
Qty.	Description	Part Numbers
4	Bolt, eye	222891
2	Mount, controller	241769
1	Cap, rain	253990
12	Support, door	276893
5	Door	276894
2	Panel, side	276896
1	Door, front	276897
12	Gusset, corner	276902
2	Stiffener, muffler support	276914
10	Brace, door	276915
5	Latch, key locking	276918
1	Clamp, manifold	276949
5	Clamp, exhaust pipe, 4 in.	289372
40	Screw, flat head machine	295098
10	Hinge, split	297601
2	Frame, air duct	326212
3	Frame, air duct	326213
1	Muffler, exhaust	336245
1	Support, muffler	336246
1	Support, exhaust	336247
1	Pipe, exhaust	336248
1	Pipe, exhaust	336249
1	Pipe, flex exhaust	336250
2	Baffle	336251
2	Screen	336252
1	Support, foam wedge	336253
2	Strap, foam wedge	336254
2	Strap, foam wedge	336255
2	Support screen	336256
2	Support, screen	336257
4	Louver, air intake	336258
2	Louver, air intake bottom	336259
1	Kit, acoustic foam	336262
4	Bracket, battery charger	336276
2	Clamp, muffler	336391