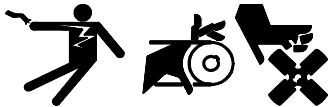

INSTALLATION INSTRUCTIONS

Original Issue Date: 4/96
 Model: 6-15 kW
 Market: Industrial
 Subject: Inner Tank Leak Alarm Kit PA-226202

The inner tank leak alarm indicates the inner tank has leaked into the outer tank and the double-wall subbase fuel tank needs replacement.

Fuel tanks. Explosive fuel vapors can cause severe injury or death. Gasoline and other volatile fuels stored in day tanks or subbase fuel tanks can cause an explosion. Store only diesel fuel in tanks.

⚠ WARNING



**Accidental starting.
 Can cause severe injury or death.**

Disconnect the battery cables before working on the generator set. Remove the negative (-) lead first when disconnecting the battery. Reconnect the negative (-) lead last when reconnecting the battery.

Disabling the generator set. Accidental starting can cause severe injury or death. Before working on the generator set or connected equipment, disable the generator set as follows: (1) Move the generator set master switch to the OFF position. (2) Disconnect the power to the battery charger. (3) Remove the battery cables, negative (-) lead first. Reconnect the negative (-) lead last when reconnecting the battery. Follow these precautions to prevent starting of the generator set by an automatic transfer switch, remote start/stop switch, or engine start command from a remote computer.

⚠ WARNING



**Explosive fuel vapors.
 Can cause severe injury or death.**

Use extreme care when handling, storing, and using fuels.

Installation

1. Place the generator set master switch in the OFF position.
2. Disconnect generator set engine starting battery, negative (-) lead first.
3. Attach leak alarm bracket (336505) to annunciator box assembly (A-224861).
4. Mount annunciator box assembly to junction box. See Figure 1 for mounting location.
5. Remove pipe plug from tank for leak alarm sensor. See Figure 1 for pipe plug location. Apply pipe sealant to threads of leak alarm (A-226201) and install in tank.
6. Connect leak alarm wiring harness (226206) to annunciator box assembly and leak alarm sensor. See Figure 1.
7. Connect wire harness power leads to either battery or starter. See Leak Alarm Battery Connections Figure 1.
8. Check that the generator set master switch is in the OFF position.
9. Reconnect the generator set engine starting battery, negative (-) lead last.

Use the following table to identify leak alarm conditions.
See Figure 1 Leak Alarm Panel view.

Alarm Switch Position	Float Switch Position	Observation
Normal	Open	The alarm horn and the lamp are not energized.
Normal	Closed	The alarm horn and lamp activate when a fuel leak occurs. If the alarm switch is moved to the silence position, the lamp stays on until the fuel leak fault is corrected.
Silence	Open	The alarm horn sounds to alert the user that the alarm horn switch is not in the normal position and that the alarm horn will not sound should a fuel leak occur.

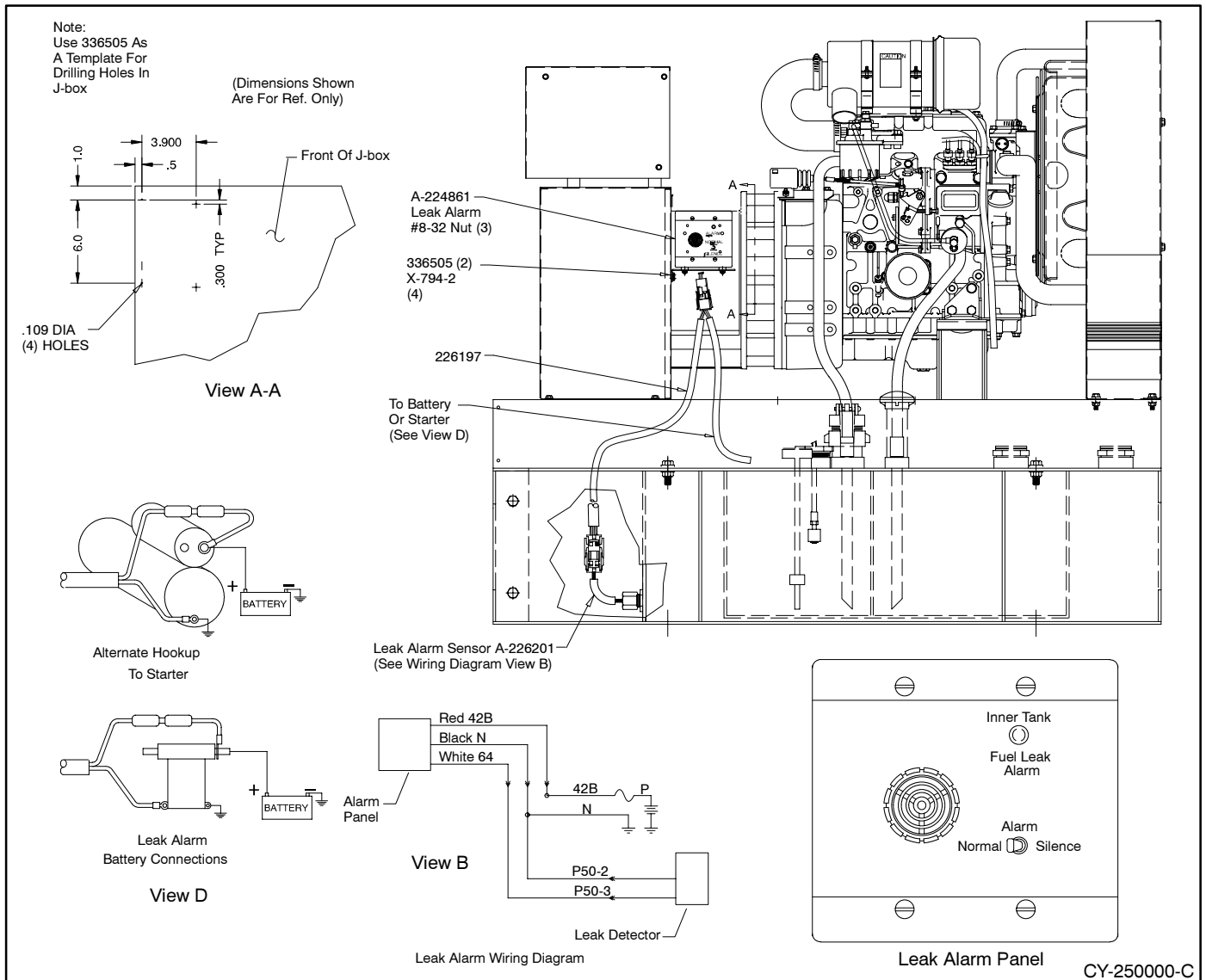


Figure 1 6-15 kW Double-Wall Subbase Fuel Tank Leak Alarm Installation

Inner Tank Leak Alarm

Parts List		
Kit: PA-226202		
Qty.	Description	Part Number
2	Screw, drill	X-794-2
1	Box, annunciator	A-224861
1	Sensor, leak alarm	A-226201
1	Harness, leak alarm wiring	226206
1	Bracket, leak alarm	336505