

---

## INSTALLATION INSTRUCTIONS

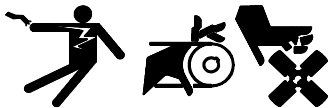
---

Original Issue Date: 11/98  
Model: 18RY/RZ  
Market: Industrial  
Subject: Weather Housing Kit PA-326790

The weather housing kit provides weather protection for generator sets installed outdoors. Lockable housing panels prevent unauthorized personnel from tampering with the generator set. Observe the following safety precautions when installing the weather housing kit.

---

**⚠ WARNING**



**Accidental starting.  
Can cause severe injury or death.**

Disconnect battery cables before working on generator set. (Remove negative (-) lead first when disconnecting battery. Reconnect negative (-) lead last when reconnecting battery.)

---

**Disabling generator set. Accidental starting can cause severe injury or death.** Before working on the generator set or connected equipment, disable the generator set as follows:

- 1) Turn the generator set master switch to OFF position.
- 2) Disconnect power to battery charger.
- 3) Remove battery cables (remove negative (-) lead first). Reconnect negative (-) lead last when reconnecting battery. Follow these precautions to prevent starting of generator set by an automatic transfer switch or remote start/stop switch.

**⚠ WARNING**



**Hot engine and exhaust system.  
Can cause severe injury or death.**

Do not work on generator set until it is allowed to cool.

**Servicing exhaust system. Hot parts can cause severe injury or death.** Do not touch hot engine parts. An engine becomes hot while running and exhaust system components become extremely hot.

# Installation

1. Place the generator set master switch in the OFF position.
2. Disconnect the power to the battery charger, if equipped.
3. Disconnect the generator set engine starting battery(ies), negative (-) lead first.
4. Refer to the assembly drawing in Figure 1 to identify kit components and their position.

---

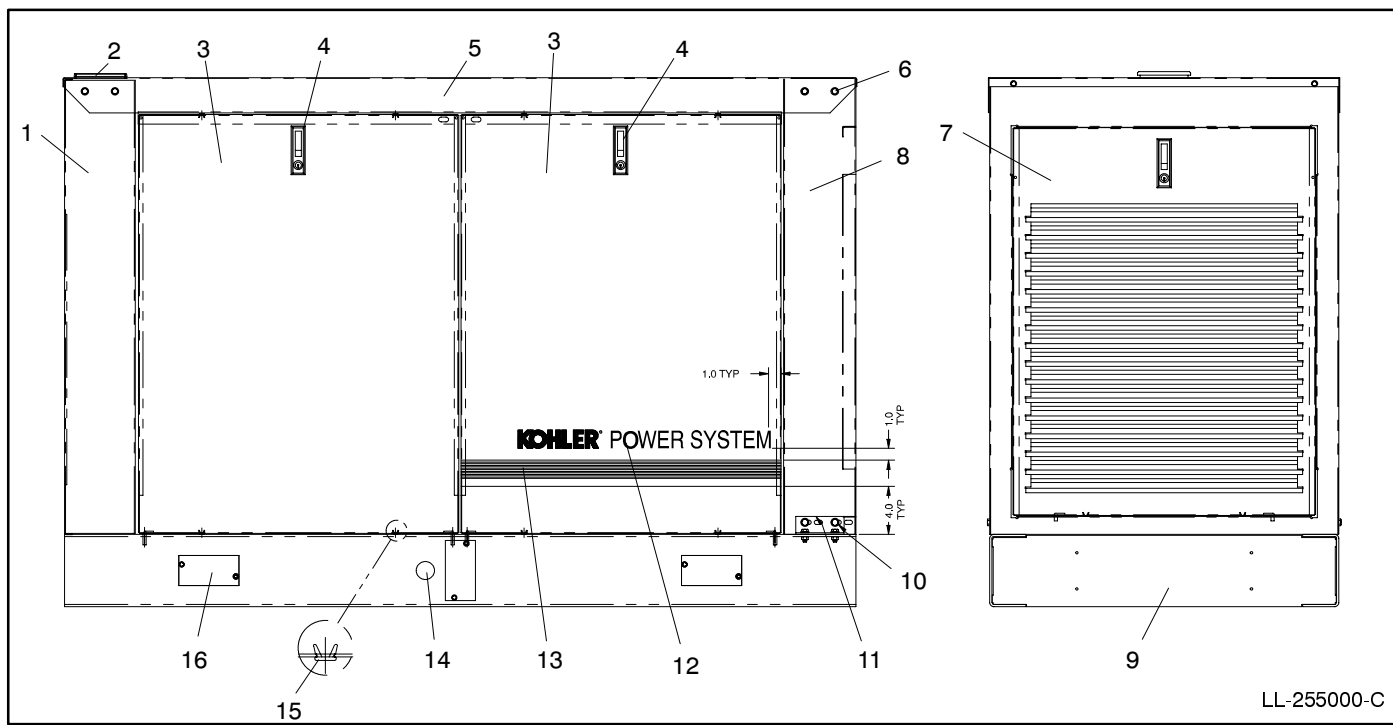
## NOTE

The generator set skid is predrilled to accept the weather housing components.

---

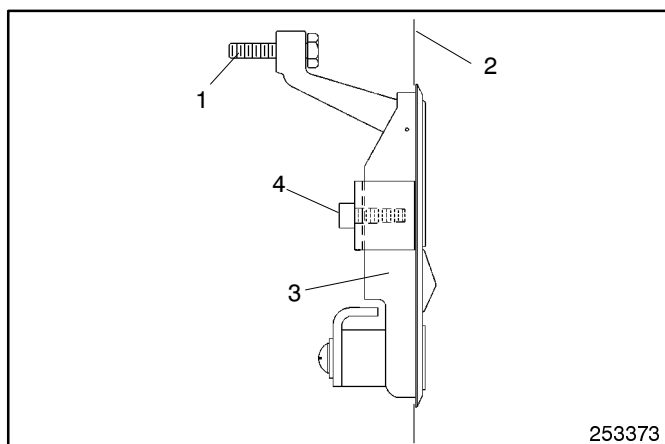
the exhaust outlet and radiator fill port on the generator set.

5. Secure the skid rail covers (254955) to the generator set skid with #10-24 screws (X-6216-1). See Figure 1.
6. Secure the mounting brackets (253950) with 5/16-18 x 1.0 in. bolts (X-125-5) and 5/16 in. plain washers (X-25-85) to the alternator end of the generator set skid. Final tighten the hardware. See Figure 1.
7. Remove the original radiator guard. Install radiator guard (326437) using 1/4-20 x 0.625 in. bolts (X-465-2), and 1/4 in. plain washers (X-25-40).
8. Position the rear housing shroud (276268) on the skid. Secure the shroud to the mounting brackets with 5/16-18 x 1.0 in. bolts (X-125-5) and 5/16 in. plain washers (X-25-85).
9. Position the weather housing roof (326438) over the top of the generator set. Align the roof openings with the exhaust outlet and radiator fill port on the generator set.
10. Secure the roof to the radiator guard and rear shroud using 1/4-14 drill screws with washers (X-794-4) in the holes provided.
11. Install the 4.5 in. (114 mm) plug (253268) into the roof hole over the radiator cap.
12. Install door latches (253373) into the openings in the doors using the screws supplied with the door latches. See Figure 2.
13. Install four plastic plugs (253723) per door to reduce vibration. Locate two plugs on the top of the door where the door meets the roof and on the bottom where the door meets the skid.
14. Attach the decals (X-6232-2 and X-6246-1) to a clean, dry surface as shown in Figure 1.
15. Install the side (326789) and back (254476-BLK) weather housing doors.
16. Secure the six skid rail covers (254758) to the generator set skid with 1/4-14 drill screws (X-794-1). See Figure 1 for location of skid rail covers.
17. Final tighten all mounting hardware.
18. Reconnect the generator set engine starting battery, negative (-) lead last.
19. Reconnect the power to the battery charger, if equipped.
20. Adjust each door latch as required to keep the door secured tight against the weather housing roof and end shrouds. See Figure 2.



- |  |   |
|--|---|
| 1. Radiator shroud (326437), 1/4-20 x 0.625 in. bolts (X-465-2), and 1/4 in. plain washers (X-25-40) | 9. Skid rail cover (254955) and screws (X-6216-1)                           |
| 2. Plug (253268)   | 10. Bolt, 5/16-18 x 1.0 in. (X-125-5), and 5/16 in. plain washers (X-25-85) |
| 3. Housing door (326789)   | 11. Mounting bracket (253950)   |
| 4. Door latch (253373)   | 12. Logo decal (X-6246-1)   |
| 5. Housing roof (326438)   | 13. Stripes decal (X-6232-2)  |
| 6. Drill screw with washer (X-794-4)   | 14. Plug (X-301-19)   |
| 7. Rear housing door (254476-BLK)  | 15. Door plug (253723)  |
| 8. Rear housing shroud (276268)  | 16. Skid rail cover (254758) and 1/4-14 drill screws (X-794-1)              |

**Figure 1. Weather Housing Assembly**



1. Latch adjusting screw
2. Door
3. Latch
4. Screw

**Figure 2. Door Latch**

## Weather Housing Kit

Parts List		
Kit: PA-326790		
Qty.	Description	Part Number
10	Washer, plain, 1/4 in.	X-25-40
8	Washer, plain, 5/16 in.	X-25-85
8	Bolt, 5/16-18 x 1.0 in.	X-125-5
1	Plug, button, 1.2 in. (30.5 mm)	X-301-19
10	Bolt, 1/4-20 x 0.625 in.	X-465-2
12	Screw, drill hex, 1/4-14	X-794-1
12	Screw, drill w/washer	X-794-4
8	Screw, phil hex crimp tite	X-6216-1
2	Decal, stripes	X-6232-2
2	Decal, logo	X-6246-1
1	Plug, 4.5 in. (114.3 mm)	253268
5	Latch, door	253373
20	Plug, plastic	253723
2	Bracket, mounting	253950
1	Door, rear housing	254476-BLK
6	Cover, skid rail	254758
2	Cover, skid end	254955
1	Shroud, rear housing	276268
1	Shroud, radiator	326437
1	Roof, housing	326438
4	Door, housing	326789