

## INSTALLATION INSTRUCTIONS

Original Issue Date: 5/16

Model: **400 Amp Model RDT ATS (Standard and Service Entrance Rated)**

Market: **ATS**

Subject: **Auxiliary Switch Kit GM100830-KP1**

### Introduction

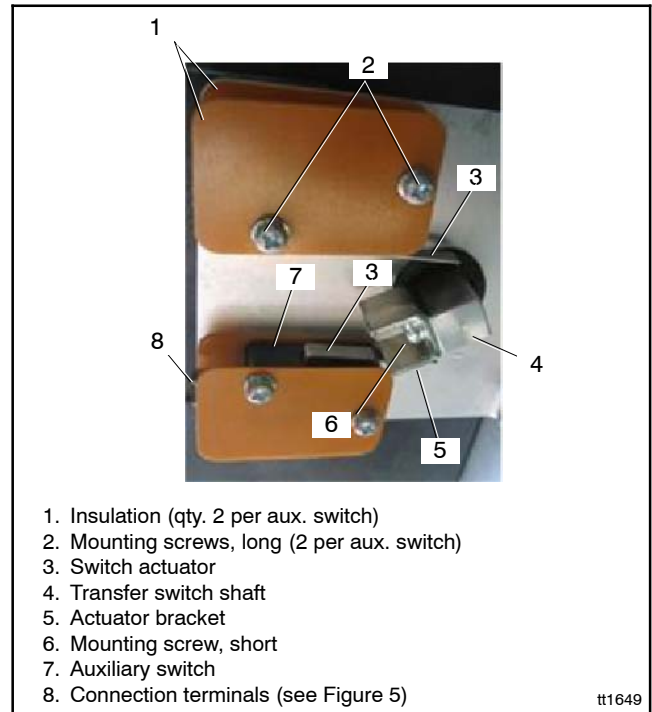
Optional auxiliary switches provide position-indicating contacts for connection to customer-supplied alarms, remote indicators, or other devices.

The auxiliary switch kit includes two switches, one to indicate the Normal position and one for the Emergency position. Each switch provides two sets of contacts:

- Normally open (NO) contacts that close when the auxiliary switch is activated.
- Normally closed (NC) contacts that open when the auxiliary switch is activated.

See Figure 1 for the installed kit. See Figure 2 for contact operation and Figure 3 for the contact rating. Connect to the NO or NC contacts as needed for the application.

Read the entire installation procedure and compare the kit parts with the parts list at the end of this publication before beginning installation. Perform the steps in the order shown. Also refer to the instructions provided with the customer-supplied equipment that is being connected to the switch.



**Figure 1** Auxiliary Switch Kit Components, Installed

	ATS Position			
	Normal		Emergency	
Auxiliary Switch	NO	NC	NO	NC
Normal switch	Closed	Open	Open	Closed
Emergency switch	Open	Closed	Closed	Open

**Figure 2** Auxiliary Switch Contact Operation

Description	Contact Rating
Auxiliary Contacts	15 A @ 250 VAC Form C

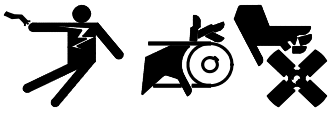
**Figure 3** Auxiliary Contact Rating

## Safety Precautions

Observe the following safety precautions while installing the kit.

---

**⚠ WARNING**




**Accidental starting.  
Can cause severe injury or death.**

Disconnect the battery cables before working on the generator set. Remove the negative (-) lead first when disconnecting the battery. Reconnect the negative (-) lead last when reconnecting the battery.

---

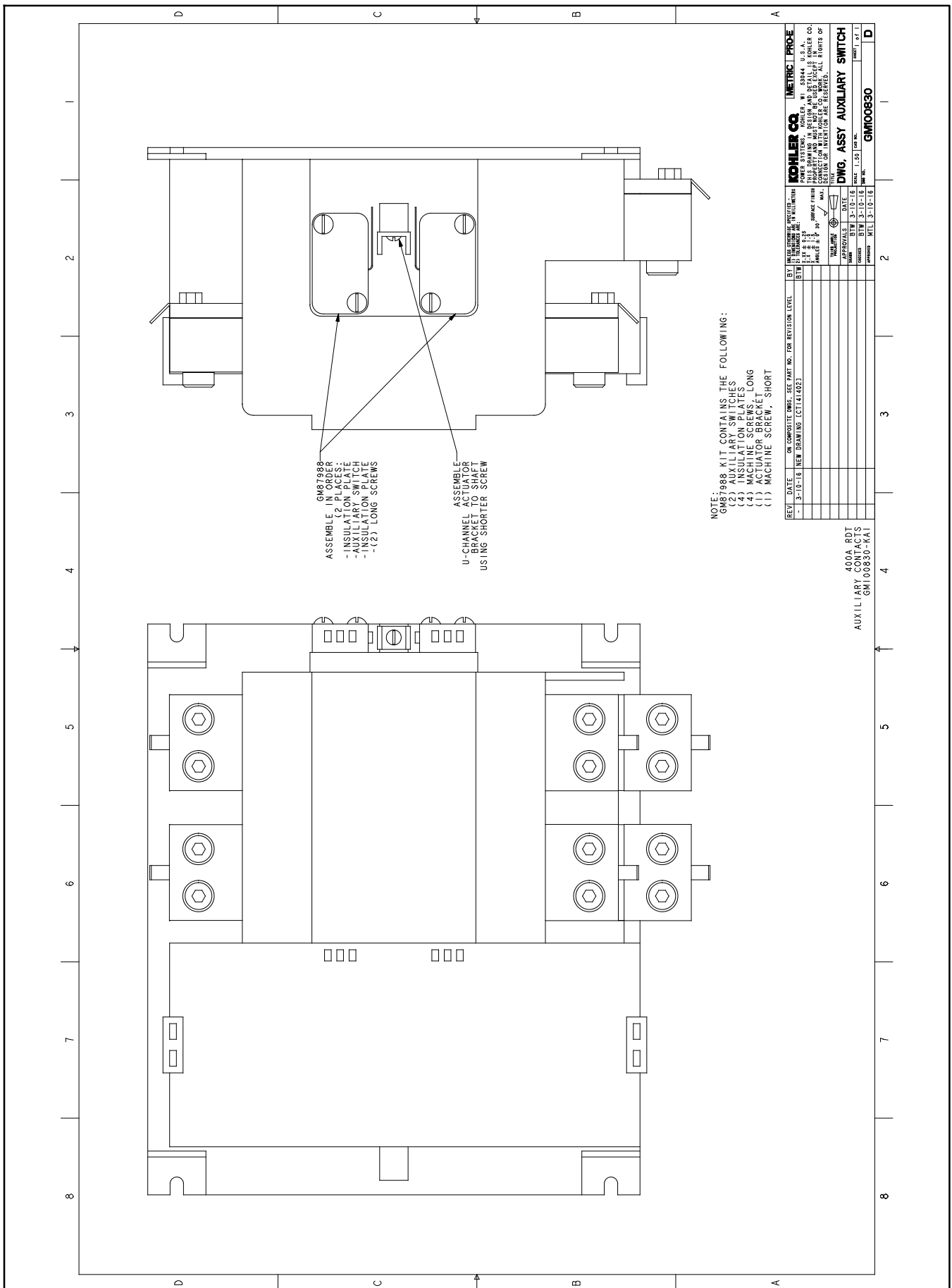
**Disabling the generator set. Accidental starting can cause severe injury or death.** Before working on the generator set or equipment connected to the set, disable the generator set as follows: (1) Press the generator set off/reset button to shut down the generator set. (2) Disconnect the power to the battery charger, if equipped. (3) Remove the battery cables, negative (-) lead first. Reconnect the negative (-) lead last when reconnecting the battery. Follow these precautions to prevent the starting of the generator set by the remote start/stop switch.

<b>⚠ DANGER</b>

<b>Hazardous voltage. Will cause severe injury or death.</b>
Disconnect all power sources before opening the enclosure.

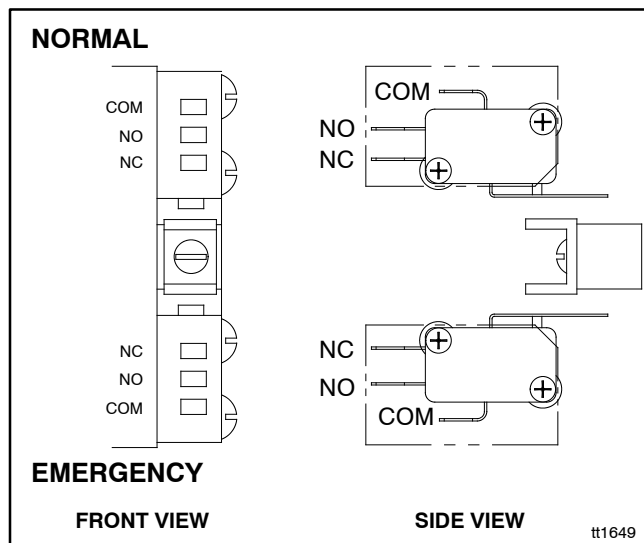
**Grounding electrical equipment. Hazardous voltage can cause severe injury or death.** Electrocutation is possible whenever electricity is present. Ensure you comply with all applicable codes and standards. Electrically ground the generator set, transfer switch, and related equipment and electrical circuits. Turn off the main circuit breakers of all power sources before servicing the equipment. Never contact electrical leads or appliances when standing in water or on wet ground because these conditions increase the risk of electrocution.

## Installation Procedure

1. Place the generator set master switch in the OFF position.
2. Disconnect the power to the battery charger.
3. Disconnect the generator set engine starting battery(ies), negative (-) lead first.
4. Disconnect power to the transfer switch.
5. Open the enclosure door and identify the mounting location for the auxiliary contacts on the right side of the contactor. See Figure 4.
6. Attach the U-shaped actuator bracket to the contactor shaft using the short screw. See Figure 1 and Figure 4.
7. See Figure 1. Install each auxiliary switch so that its actuator will contact the actuator bracket on the transfer switch shaft.
  - a. Place one auxiliary switch between two insulators. Install the auxiliary switch and insulators onto the transfer switch using two long mounting screws. Do not overtighten the screws.
  - b. Install the second auxiliary switch between two insulators using two long mounting screws. Do not overtighten the screws.
8. Connect an ohmmeter or test lamp across the NO and COM contact terminals. See Figure 5.
9. Manually operate the transfer switch and verify that the auxiliary switch is actuated when the contactor is in the corresponding (normal or emergency) position and not actuated otherwise.
10. Manually operate the transfer switch to the other position and verify that the second auxiliary switch is actuated when the contactor is in the corresponding (normal or emergency) position and not actuated otherwise.
11. Use 0.187 in. fast-on connectors to connect customer-supplied equipment to the auxiliary switch terminals as required for the application. See Figure 2 and Figure 5. Refer to the instructions provided with the customer-supplied equipment to determine whether to connect to the normally open (NO) or normally closed (NC) contacts.



**Figure 4** Auxiliary Switch Kit Installation Drawing, GM100830



**Figure 5** Auxiliary Switch Connection Terminals

12. Close and secure the transfer switch enclosure door.
13. Reconnect power to the transfer switch.
14. Check that the generator set master switch is in the OFF position.
15. Reconnect the generator set engine starting battery, negative (-) lead last.
16. Reconnect power to the battery charger.

## Parts List

### Switch, Auxiliary

Kit: GM100830-KP1		
Qty.	Description	Part Number
1	Assembly, includes *	GM87988
1	Bracket, actuator	*
4	Insulator, cont. auxiliary switch.	*
4	Screw, machine, long	*
1	Screw, machine, short	*
2	Switch, contactor aux.	*
1	Installation Instructions	TT-1694

Availability is subject to change without notice. Kohler Co. reserves the right to change the design or specifications without notice and without any obligation or liability whatsoever. Contact your local Kohler® generator set distributor for availability.