



### Battery Rack Kit PA-259742

This kit is for use on all unboxed R-Series model generator sets. Battery cables are not included in the kit.

The following battery cables are necessary for proper battery connection:

Model	Kit No.
10RM/15RMY	Std. with Generator Set
10RMOY/15RMOY/15ROY	259754
17.5ROY/22.5ROZ/24ROZ	259755
22.5RZ	287349
32.5ROZ/32.5RZ/47.5ROZ	290497

#### WARNING

**UNIT STARTS WITHOUT NOTICE!** Units with Automatic Transfer Switches start automatically. Turn Generator Main Switch on controller to OFF position, and remove battery cables (remove negative lead first and reconnect it last) to disable generator set before working on any equipment connected to generator.

#### WARNING

**LEAD ACID STARTING BATTERY!** Battery generates flammable hydrogen gas and contains acid. Use extreme care when handling or charging battery. Avoid contacting terminals with tools, etc., to prevent burns and to prevent sparks that could cause an explosion. Remove wristwatch, rings, and any other jewelry before handling battery. If acid splashes on skin or eyes, flush affected areas with cold water for 15 minutes. In case of eye contact, get immediate medical attention. Operate generator set and charge battery only in well-ventilated areas.

#### MOUNTING BATTERY RACK

- Place controller main switch to OFF position. Disconnect battery, negative lead first.

#### NOTE

On all units, except 10RM and 15RMY, remove existing battery cables from terminals on generator set. Cables will not be reused.

- If unit is a 15ROY, exchange the position of the oil pressure switch (271622) and the oil pressure sender (264390). See Figure 1 for new locations.
  - Remove leads from switches.
  - Remove switches.
  - Coat threads of switches with a high temperature pipe joint compound and install in new locations.
  - Reconnect leads to switches.
- Measure distance from radiator end as shown in Figure 1. See Table 1 for dimensions and location.

#### NOTE

If no "B" dimension is given, allow for .38 in. (9.5 mm) of clearance between battery and generator.

- Drill four .375 in. (9.5 mm) dia. holes in top of skid using battery rack as a template.
- Mount battery rack to skid using four screws, lock washers, and nuts.
- Place battery on rack with terminals away from the generator set. Place battery clamp on back edge of battery.
- Insert hold down stud into rack and through battery clamp. Install washer and lock nut, do not final tighten. Repeat for other side of battery.
- With both studs installed, tighten nuts evenly until battery is secure. Do not overtighten!
- On all units, except 10RM and 15RMY, install new battery cables to appropriate terminals on generator set.
- Attach red battery cable to battery positive (+) terminal.
- With controller main switch in OFF position, attach black battery cable to battery negative (-) terminal.

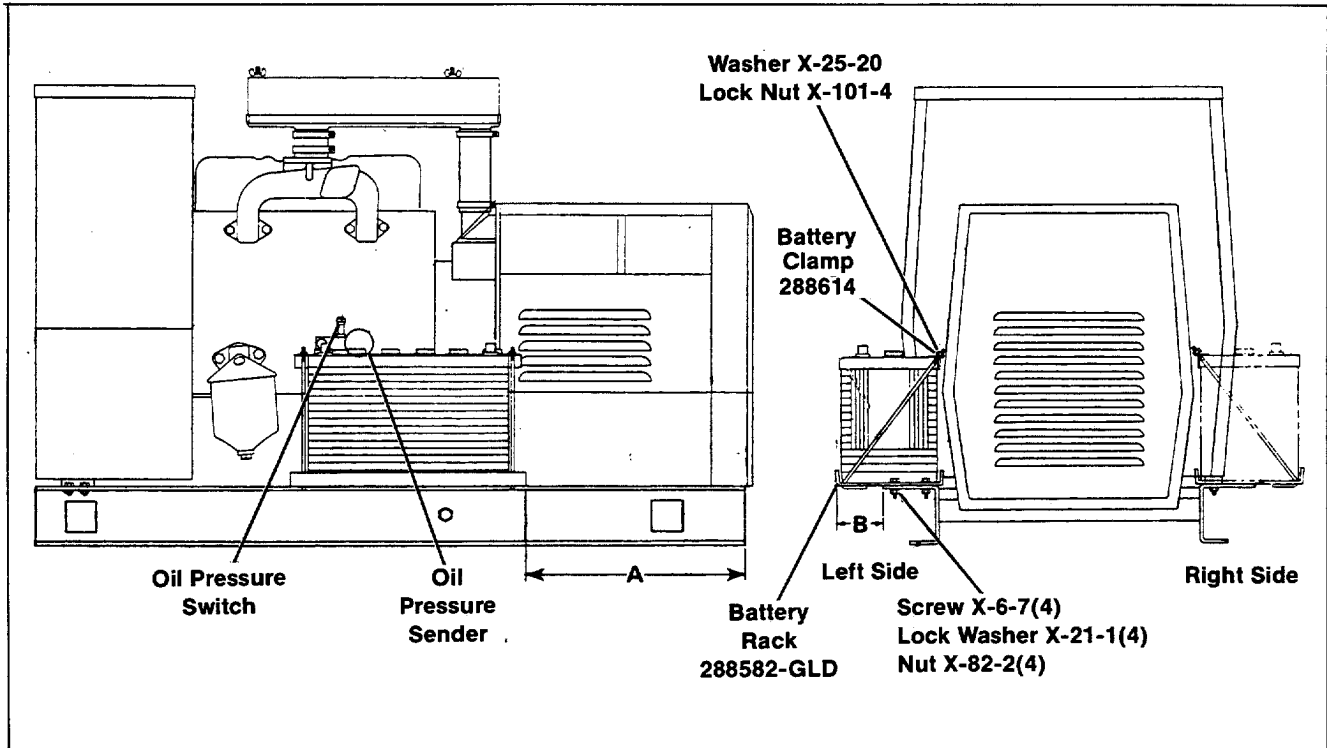


Figure 1. Mounting Battery Rack

Table 1. Dimensions and Location

Model	Dimension		Location
	A	B	
10RM/15RMY (Wisc.)	14.50 in. (368 mm)	2.40 in. (61 mm)	Left Side
10RMOY/15RMOY (MWM)	1.50 in. (38 mm)	—	Right Side
15ROY (Perkins)	0.0 in. (0.0 mm)	—	Left Side
17.5ROY/24ROY	11.38 in. (289 mm)	3.88 in. (98 mm)	Left Side
22.5ROZ (Perkins)	11.38 in. (289 mm)	—	Left Side
22.5RZ (White)	22.00 in. (559 mm)	—	Right Side
32.5ROZ/32.5RZ	32.00 in. (813 mm)	—	Right Side
47.5ROZ	29.00 in. (737 mm)	—	Left Side

PART LISTING

Part No.	Description	Qty.
X-6-7	Screw, 5/16-18 x 1"	4
X-21-1	Washer, 5/16" Lock	4
X-25-20	Washer, 5/16" Flat	2
X-82-2	Nut, 5/16-18	4
X-101-4	Nut, 5/16-24 Lock	2
274200	Stud, Hold Down	2
288582-GLD	Rack, Battery	1
288614	Clamp, Battery	1