

Accessory 05F or 05G 225-800 Amp Automatic Transfer Switches

When installing Accessory 05F or 05G on your 225-800 Amp Automatic Transfer Switch, a wire must be added to the contactor harness to pick up voltage at EB. This wire runs from EB to cavity number 17 in the contactor harness plug. Follow the instructions for your specific switch.

WARNING

SHOCK HAZARD! De-energize both normal and emergency sources before proceeding!

225-400 Amp Switches

1. Add lead T019-1859-19258 to terminal 19 (EB) on rear of contactor. See Figure 1.
2. Place terminal of lead over existing nut at connection 19 (EB). Do not remove or loosen the present nut at location 19 (EB).
3. Add a lockwasher (X-19-1) and nut (X-70-2) to keep new terminal in place.
4. Route lead through contactor harness to cavity 17 in the contactor harness plug. See Figure 2. Secure with tie wraps (X-468-1).

600-800 Amp Switches

1. Add lead T019-1654-19218 to 600 Amp Switches, or lead T019-1854-19217 to 800 Amp Switches to the EB terminal on front of the contactor. See Figure 3.
2. On 600 Amp Switches, place terminal of lead over existing nut at connection EB. Do not loosen or remove present nut at EB. Attach lead with lockwasher (X-22-3) and nut (X-83-1).

On 800 Amp Switches, place terminal of lead over existing nut at connection EB. Do not loosen or remove present nut at EB. Attach lead with lockerwasher (X-24-6) and nut (X-89-8).

3. Route the lead through the hole on 600 Amp Switches and over the top on 800 Amp Switches; through the contactor harness to the number 17 cavity on the contactor harness plug. See Figure 3. Secure with tie wraps (X-468-1).

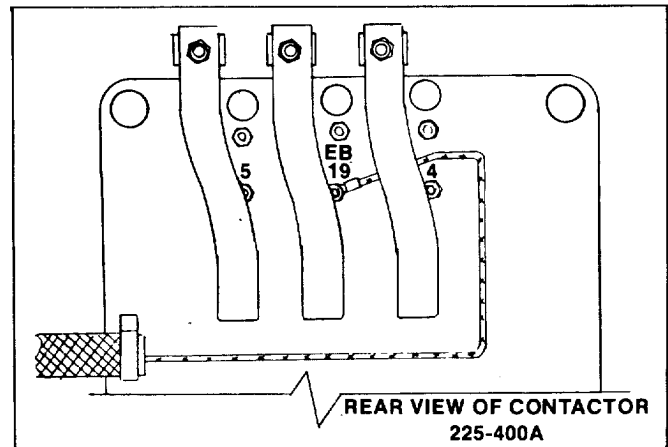


Figure 1. 225-400 Amp Switch

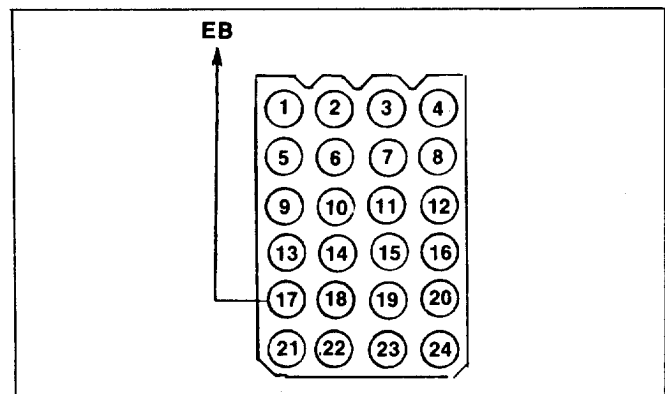


Figure 2. Contactor Harness Plug

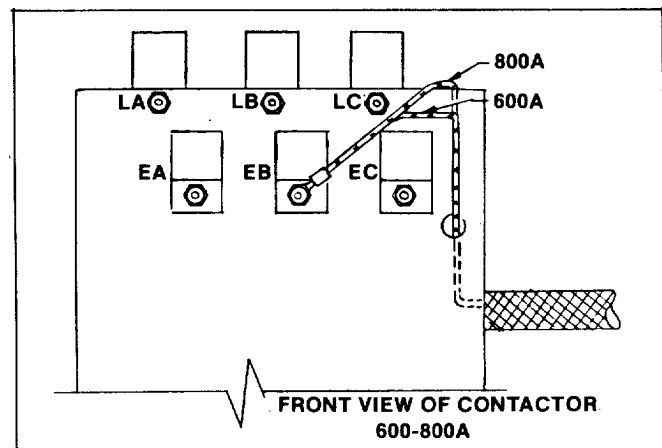


Figure 3. 600-800 Amp Switch