

Battery Rack Kit PA-253138 30-60ROZ (4 Cyl.) Unhoused 60/80ROZ (6 Cyl.) Housed Or Unhoused Fast-Response II

WARNING

UNIT STARTS WITHOUT NOTICE! Units with Automatic Transfer Switches start automatically. Potential injury or electrocution can result. Turn Generator Master Switch on controller to OFF position and remove battery cables (remove negative lead first and reconnect it last) to disable generator set before working on any equipment connected to generator.

WARNING

EXPLOSIVE BATTERY GASES! The gases generated by a battery being charged are highly explosive. Do not smoke or permit flame or spark to occur near a battery at any time, particularly when it is being charged. Avoid contacting terminals with tools, etc., to prevent burns and to prevent sparks that could cause an explosion. Remove wristwatch, rings, and any other jewelry before handling battery. Any compartment containing batteries should be well ventilated to prevent accumulation of explosive gases. To avoid sparks, do not disturb battery charger connections while battery is being charged and always turn charger off before disconnecting.

WARNING

DANGEROUS ACID! Avoid contact with battery electrolyte. It contains acid which can eat holes in clothing, burn skin, and cause permanent damage to eyes. Always wear splash-proof safety goggles when working around the battery. If battery electrolyte is splashed in the eyes or on skin, immediately flush the affected area for 15 minutes with large quantities of clean water. In the case of eye contact, seek immediate medical aid. Never add acid to a battery once the battery has been placed in service. Doing so may result in dangerous spattering of electrolyte.

WARNING

ELECTRICAL SHOCK! Battery can cause electrical burns and shocks. Exercise reasonable care when working near the battery to avoid electrical connections through tools. Remove wristwatch, rings, and any other jewelry.

MOUNTING BATTERY RACK

1. Place controller master switch to OFF position. Disconnect battery, negative lead first. Remove existing battery cables from terminals on generator set. Cables will not be reused.
2. Measure distance from radiator end as shown in Figure 1.
3. Drill two .344-in. (8.74-mm) diameter holes 15.0 in. (381 mm) apart in top of skid using battery rack as a template.

NOTE

Battery rack edge should be 1 in. (25 mm) from outside edge of skid.

4. Mount battery rack to skid using two screws, lock washers, and nuts.
5. Place battery on rack with terminals toward the generator set. Place battery clamp on front edge of battery.
6. Insert hold-down stud into rack and through battery clamp. Install washer and nut; do not final tighten. Repeat for other side of battery.
7. With both studs installed, tighten nuts evenly until battery is secure. Do not over tighten!
8. Check that controller master switch is in the OFF position and attach red battery cable to appropriate terminal on generator set and to battery positive (+) terminal.
9. Attach black battery cable to appropriate terminal on generator set and to battery negative (-) terminal

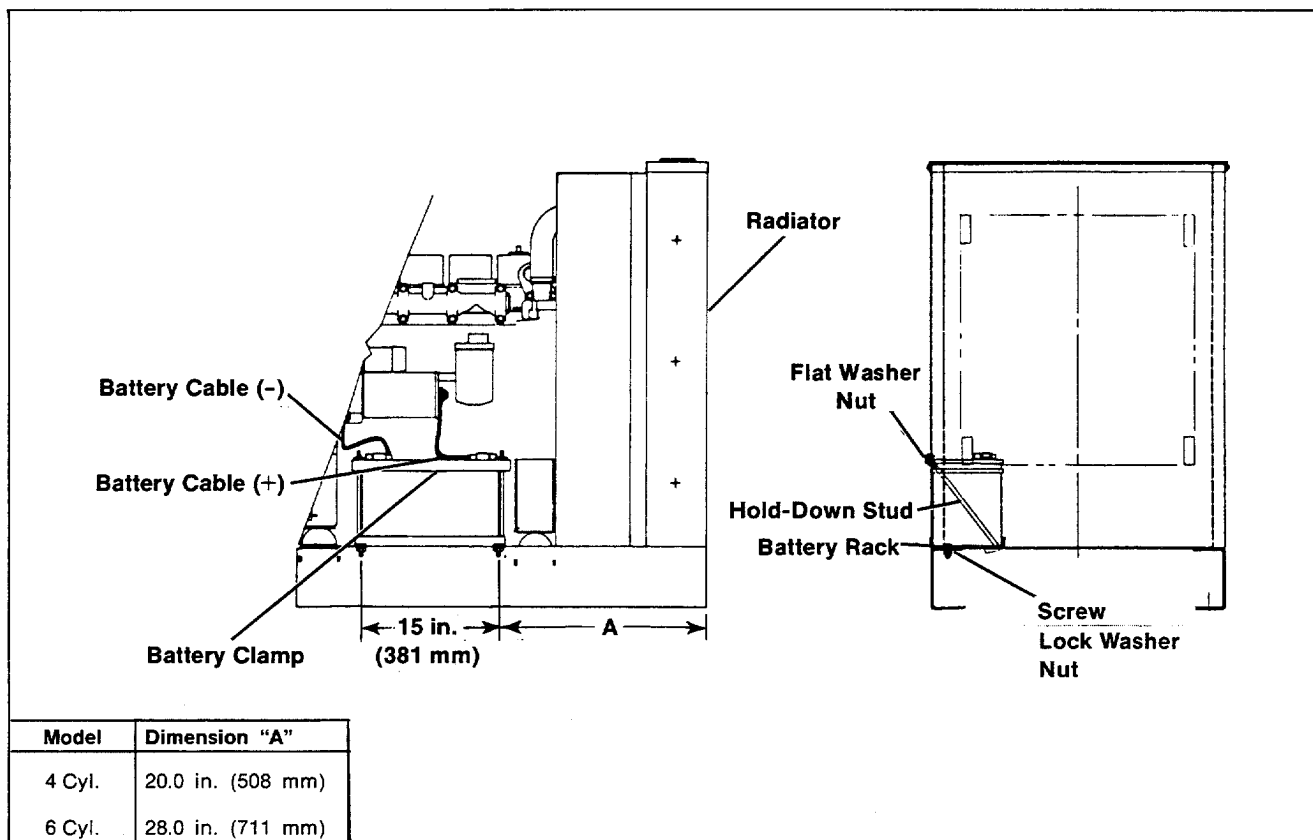


Figure 1. Mounting Battery Rack

PARTS LISTING

Part No.	Description	Qty.
X-22-3	Washer, 3/8" Lock	2
X-25-44	Washer, 21/64" x 9/16" Flat	2
X-101-4	Nut, 5/16-24	2
X-545-45	Cable, Battery (+)	1
X-545-46	Cable, Battery (-)	1
X-6050-4	Screw, M8-1.25 x 25	2
X-6053-2	Nut, M8-1.25	2
274200	Stud, Battery Hold-Down	2
288582	Rack, Battery	1
288614	Clamp, Battery	1