



Alarm Horn Kit 12 Volt FRII

Kit Number	Controller Type
PA-255118	Solid-State Logic
PA-255386	Relay Logic

The alarm horn is used as an alert when an operating failure occurs on the generator set. Use the following instructions when installing kit.

WARNING

UNIT STARTS WITHOUT NOTICE! Units with Automatic Transfer Switches start automatically. Turn Generator Main Switch on controller to OFF position, and remove battery cables (remove negative lead first and reconnect it last) to disable generator set before working on any equipment connected to generator.

INSTALLATION

1. Place controller main switch to OFF position. Disconnect battery of generator set, negative lead first.
2. Remove panels to expose mounting bracket.
3. Locate mounting bracket with predrilled holes for mounting alarm horn kit. See Figure 1.
4. Mount horn bracket to junction box bottom using a screw, tooth lock washer, split lock washer, and nut. See Figure 2.

NOTE

Place tooth lock washer between screw head and bracket.

5. Mount alarm horn to bracket with nut.

NOTE

Pitch of alarm horn can be adjusted by turning screw located near push-on terminal.

6. On solid-state models only, mount circuit board assembly to mounting bracket with three screws and lock washers.
7. Mount flasher clip to mounting bracket with two screws, flat washers, lock washers, and nuts. Place flat washers between clip and mounting bracket. Slide flasher into clip and secure with a cable tie.

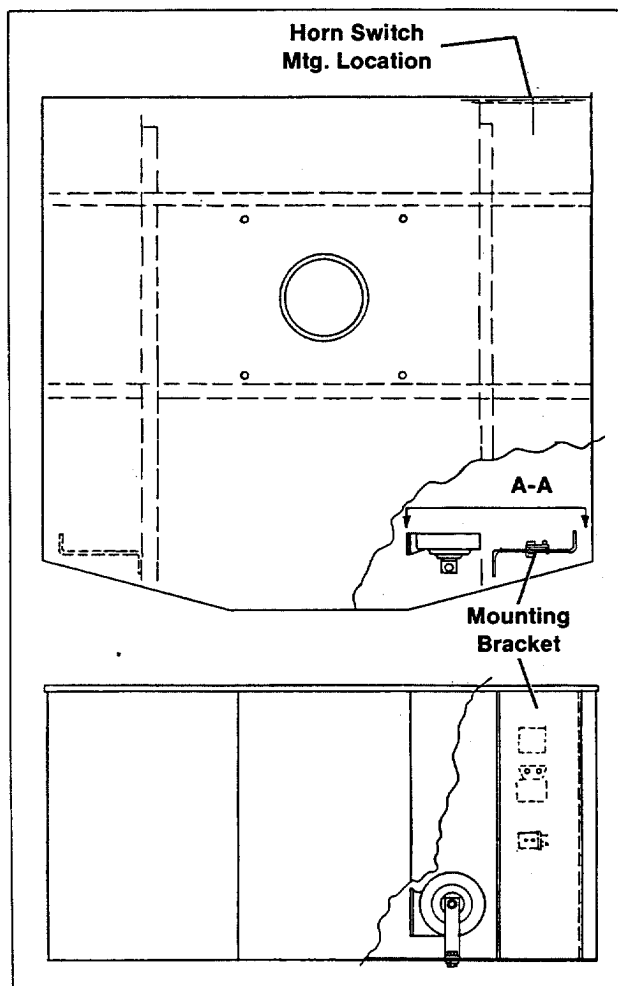


Figure 1. Mounting Bracket

8. Mount relay using two screws, flat washers, split lock washers, and nuts.

NOTE

Use one relay bracket screw as a ground. Place eyelet terminal of shielded cable, and white lead (solid-state model) or black lead (relay model) behind screw head. Install tooth washer between eyelet terminal and relay.

9. Drill .50 in. (12.7 mm) diameter and .125 in. (3.2 mm) diameter holes in junction box as shown in Figure 3.
10. Install toggle switch, nameplate, and lock ring.

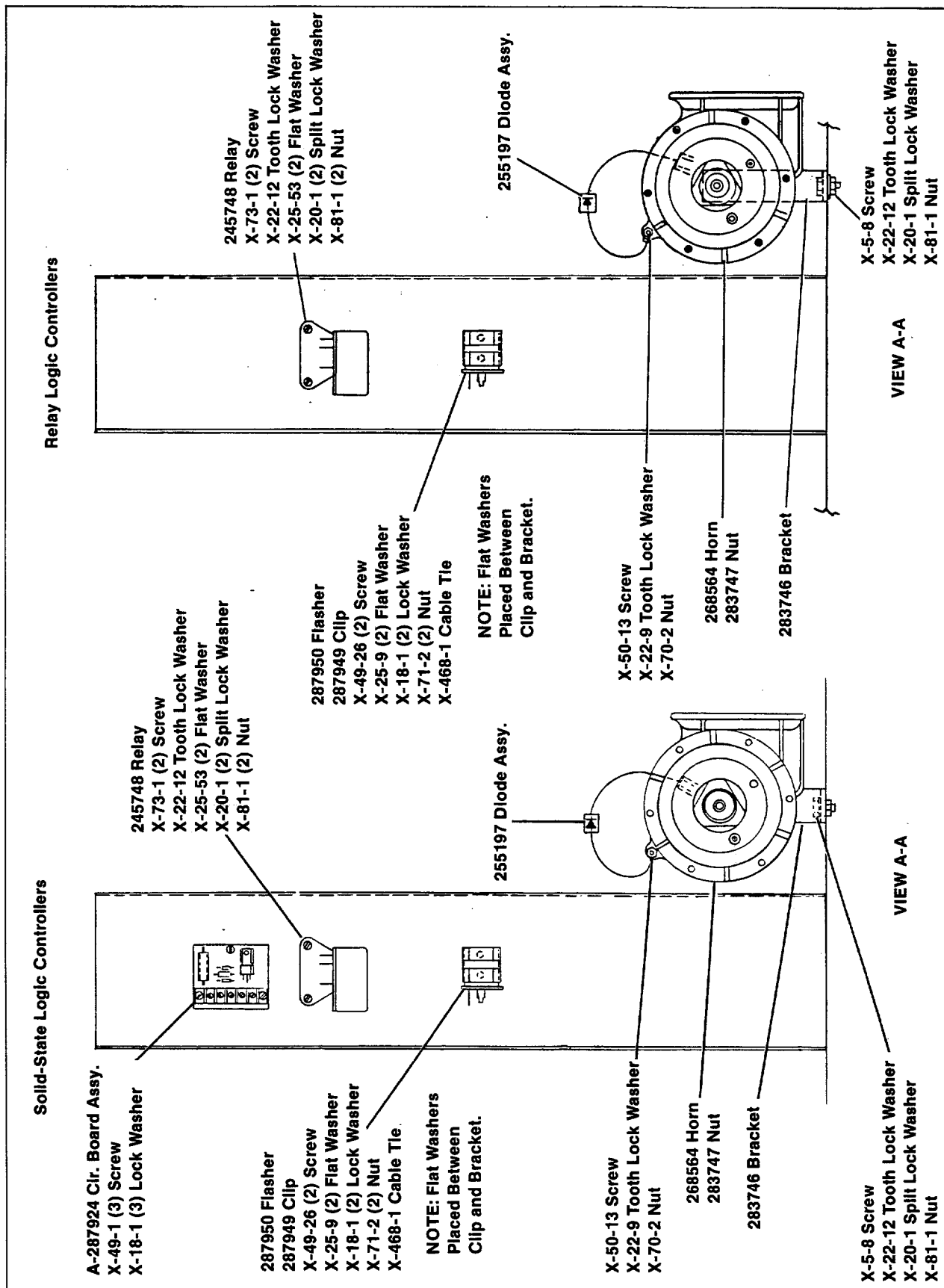


Figure 2. Installing Alarm Horn Kit

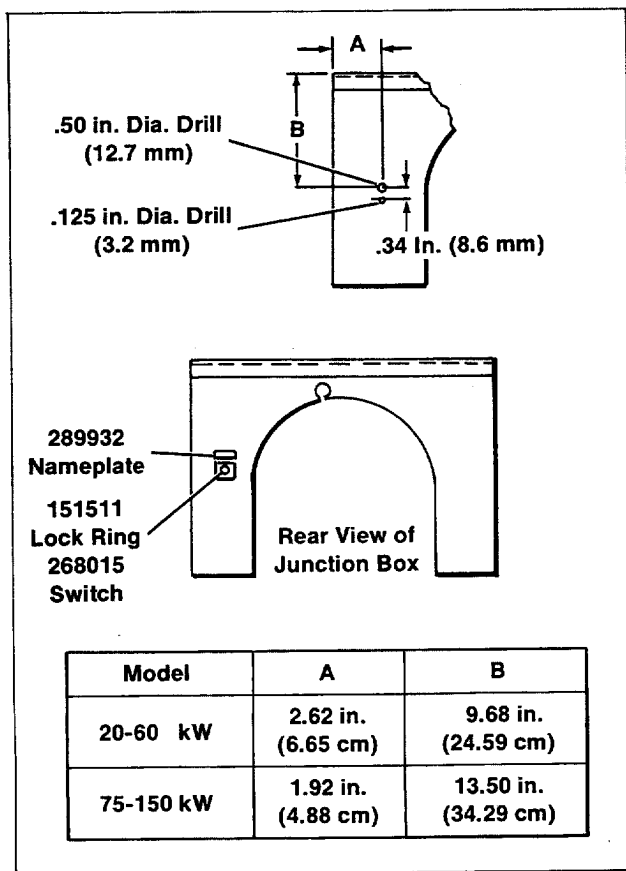


Figure 3. Horn Switch Mounting

11. Connect eyelet terminals of wiring harness and diode assembly to alarm horn grounding tab with screw, tooth washer, and nut. Place eyelet terminals behind screw head. Place tooth washer between horn and nut.
12. See Figure 4 or 5 to connect remainder of alarm horn wiring.

NOTE

Several wires not listed are also part of the generator set wiring harness shown in Figures 4 and 5.

NOTE

Bare wire without terminal in shielded cable should be bent back on cable jacket .50 in. (13 mm) and insulated with electrical tape.

- a. Connect white lead of diode assembly to push-on terminal of alarm horn.
- b. Connect push-on terminal of wiring harness to piggyback terminal on white lead of diode assembly.
- c. Connect the other push-on terminal of wiring harness to flasher terminal.
- d. Connect red lead between flasher and terminal 3 of relay.
- e. Connect lead P to terminal 1 of relay.
- f. On solid-state models, connect black lead between terminal 4 of relay and to GRD. terminal on circuit board.

NOTE

White lead also goes to GRD. terminal of circuit board.

On relay models, connect black lead to terminal 4 of relay.

- g. On solid-state models only, connect orange lead between terminal 5 of relay and terminal HR of circuit board.
- h. On solid-state models, connect lead 64 to terminal 64 of circuit board.
- On relay models, connect lead 64 to terminal 5 of relay.
- i. On solid-state models only, connect lead 42A to terminal 42A of circuit board.
- j. On solid-state models only, connect lead 65 to terminal 63 of circuit board.
- k. Connect the other end of lead 64 (in wiring harness near switch) to alarm horn switch.
- l. Connect lead 32 (in wiring harness) to other terminal of alarm horn switch.

- m. On relay models only, remove controller cover and connect white lead between terminal 43 on controller board terminal block and pin 4 of 24-pin plug. See Figure 6. Replace controller cover.

13. Replace junction box panels.
14. Check that the controller main switch is in the OFF position. Reconnect battery, negative lead last.

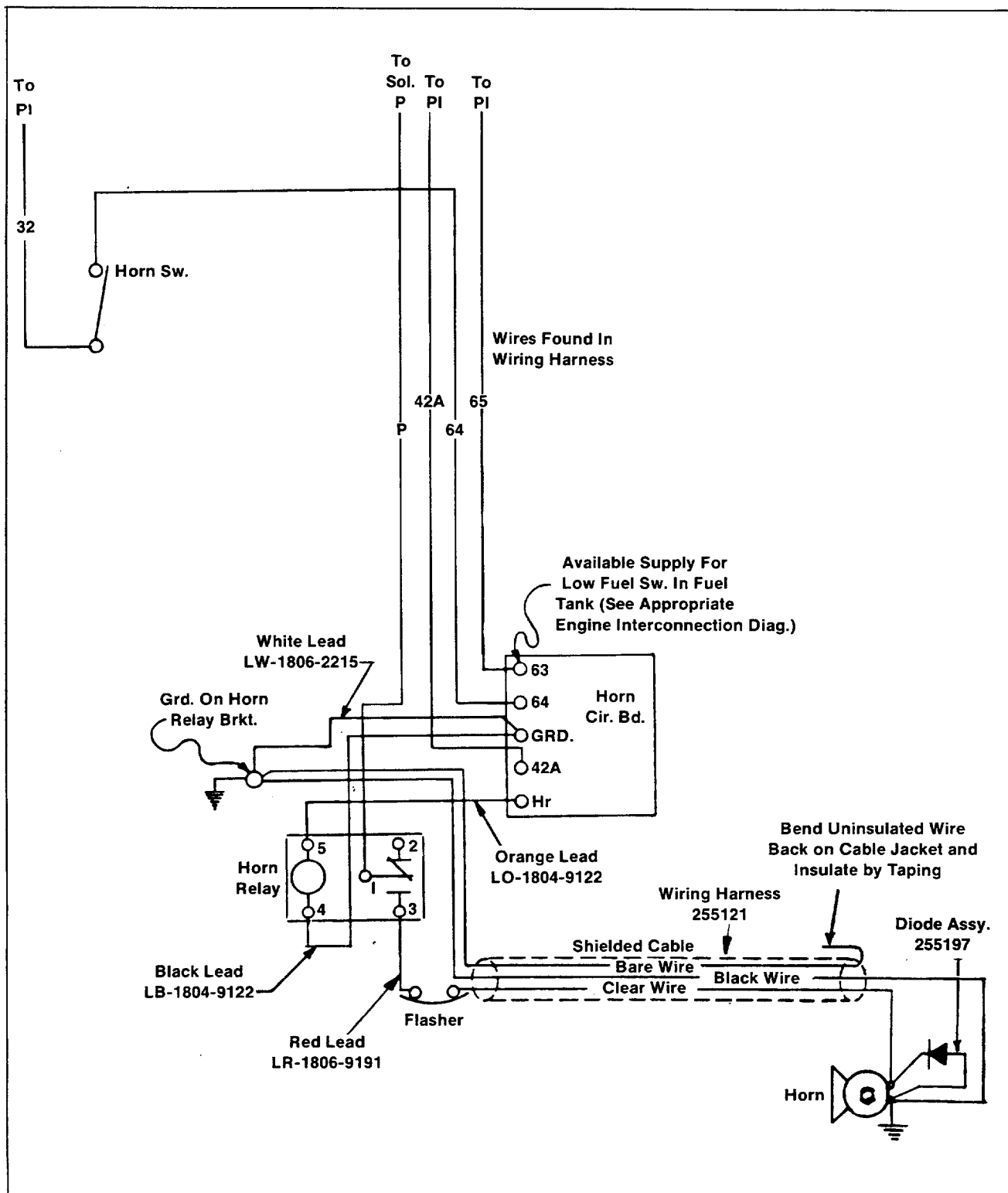


Figure 4. Wiring Diagram (Solid-State Model)

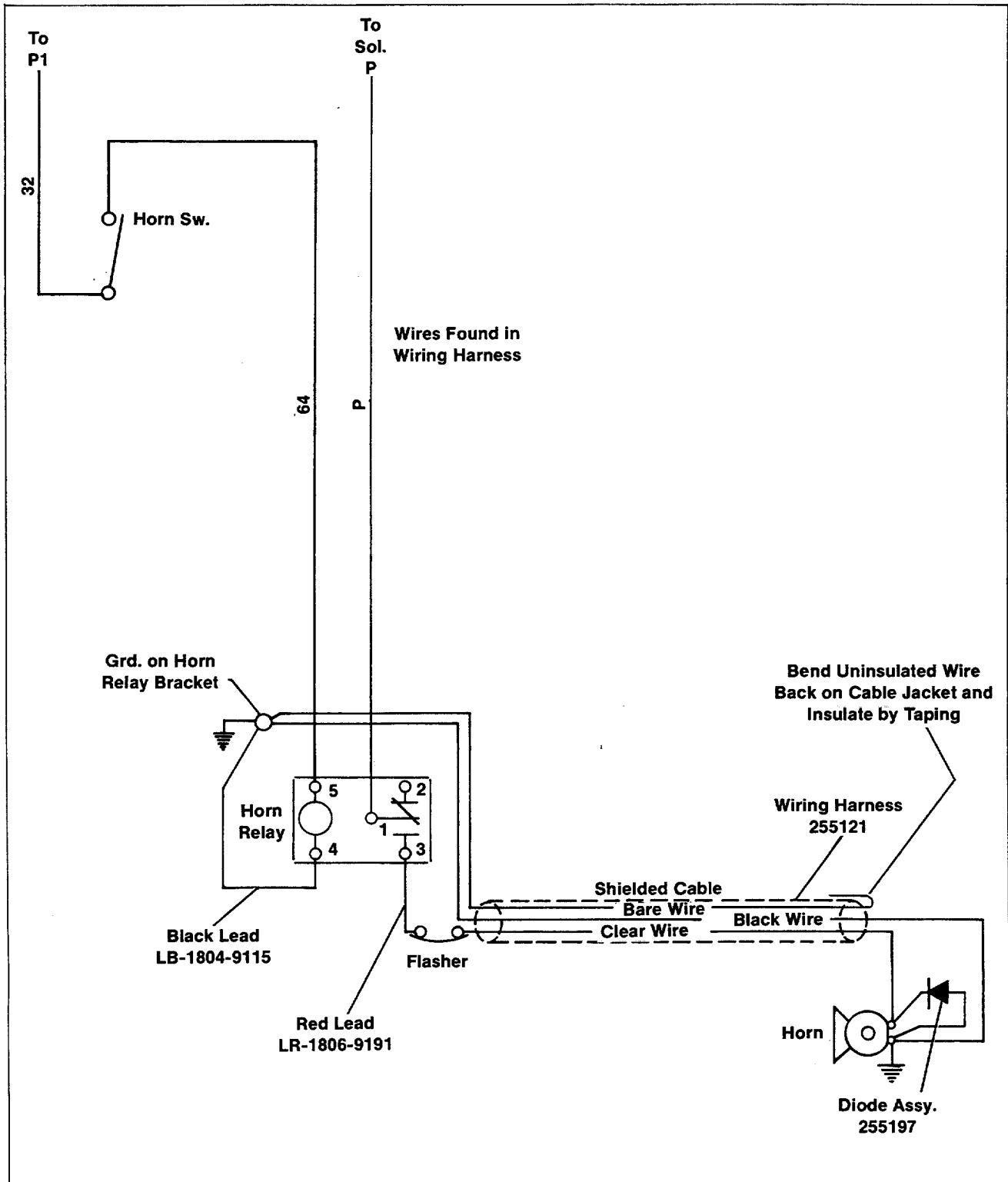


Figure 5. Wiring Diagram (Relay Model)

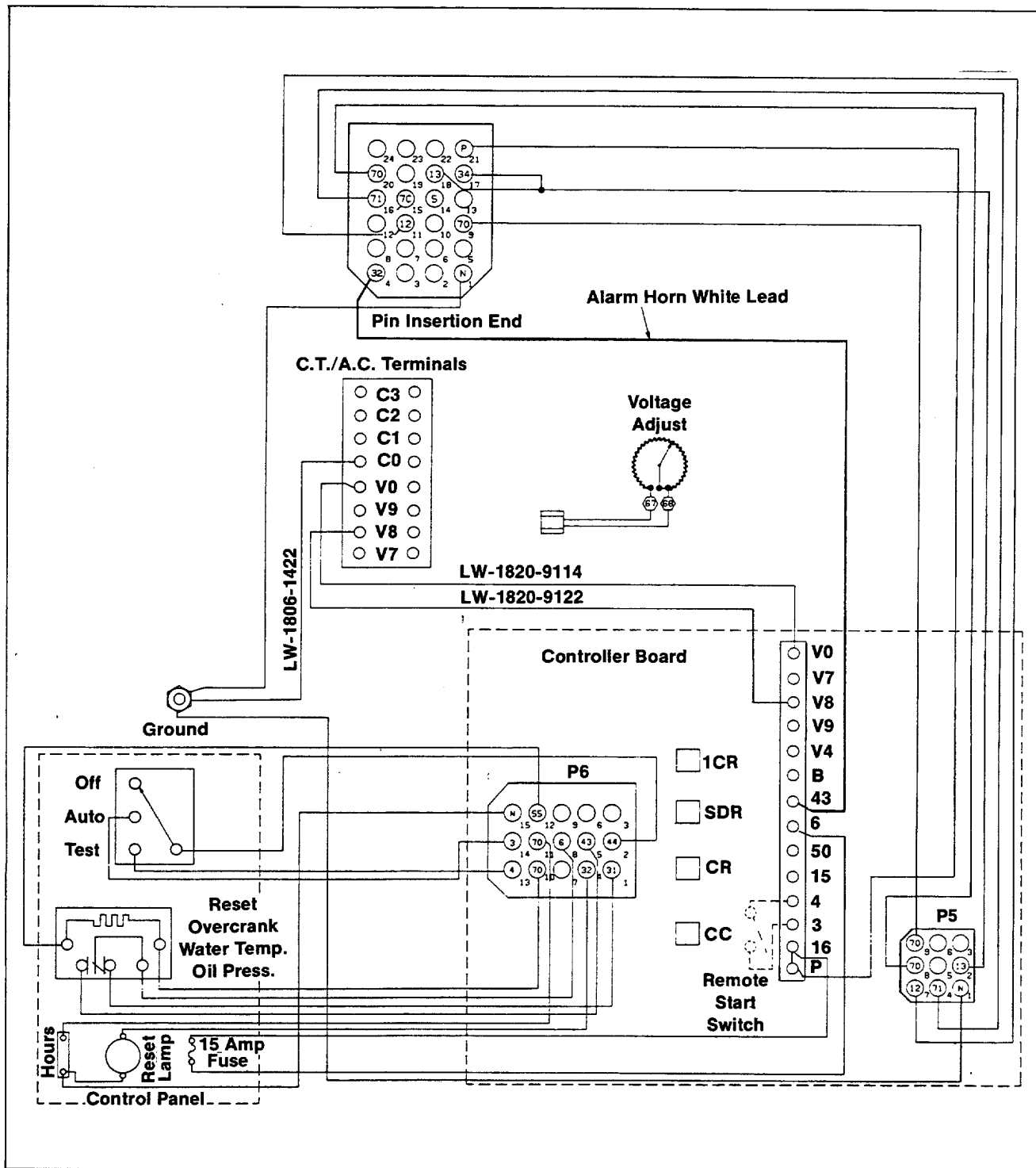


Figure 6. Relay Controller Wiring Diagram

PART LISTING

Description	Qty.	Common Parts	PA-255118	PA-255386
Board Assembly, Circuit	1		A-287924	
Screw, 1/4-20 x 3/4"	1	X-5-8		
Washer, #6 Lock	2			X-18-1
	5		X-18-1	
Washer, 1/4" Split Lock	3	X-20-1		
Washer, #10 Internal Tooth Lock	1	X-22-9		
Washer, 1/4" Internal/External Tooth Lock	2	X-22-12		
Washer, #6 Flat	2	X-25-9		
Washer, 1/4" Flat	2	X-25-53		
Screw, 6-32 x 5/16"	3		X-49-1	
Screw, 6-32 x 1/2"	2	X-49-26		
Screw, 10-24 x 3/8"	1	X-50-13		
Nut, 10-24	1	X-70-2		
Nut, 6-32	2	X-71-2		
Screw, 1/4-20 x 1/2"	2	X-73-1		
Nut, 1/4-20	3	X-81-1		
Tie, Cable	1	X-468-1		
Ring, Lock	1	151511		
Relay	1	245748		
Harness, Wiring	1	255121		
Diode Assembly, 12 Volt	1	255197		
Switch, Toggle	1	268015		
Horn	1	268564		
Bracket, Horn	1	283746		
Nut, Horn	1	283747		
Clip, Flasher	1	287949		
Flasher	1	287950		
Nameplate	1	289932		
Lead, Black	1		LB-1804-9122	LB-1804-9115
Lead, Orange	1		LO-1804-9122	
Lead, Red	1	LR-1806-9191		
Lead, White	1		LW-1806-2215	LW-1820-9185