

### Battery Rack Kit #PA-255113 20 ROZ and 30/45 RZ Housed or Unhoused Fast-Response II

#### **⚠ WARNING**

**UNIT STARTS WITHOUT NOTICE!** Units with Automatic Transfer Switches start automatically. Potential injury or electrocution can result. Turn Generator Master Switch on controller to OFF position, and remove battery cables (remove negative lead first and reconnect it last) to disable generator set before working on any equipment connected to generator.

#### **⚠ WARNING**

**DANGEROUS ACID!** Avoid contact with battery electrolyte. It contains acid which can eat holes in clothing, burn skin, and cause permanent damage to eyes. Always wear splash-proof safety goggles when working around the battery. If battery electrolyte is splashed in the eyes or on skin, immediately flush the affected area for 15 minutes with large quantities of clean water. In the case of eye contact, seek immediate medical aid. Never add acid to a battery once the battery has been placed in service. Doing so may result in dangerous spattering of electrolyte.

#### **⚠ WARNING**

**ELECTRICAL SHOCK!** Battery can cause electrical burns and shocks. Exercise reasonable care when working near the battery to avoid electrical connections through tools. Remove wristwatch, rings, and any other jewelry.

#### **⚠ WARNING**

**EXPLOSIVE BATTERY GASES!** The gases generated by a battery being charged are highly explosive. Do not smoke or permit flame or spark to occur near a battery at any time, particularly when it is being charged. Avoid contacting terminals with tools, etc., to prevent burns and to prevent sparks that could cause an explosion. Remove wristwatch, rings, and any other jewelry before handling battery. Any compartment containing batteries should be well ventilated to prevent accumulation of

explosive gases. To avoid sparks, do not disturb battery charger connections while battery is being charged and always turn charger off before disconnecting.

#### **MOUNTING BATTERY RACK**

1. Place controller master switch to OFF position. Disconnect battery, negative lead first. Remove existing battery cables from terminals on generator set. Cables will not be used.
2. Remove doors to expose generator set, if unit is housed.
3. Measure distance from radiator end and from inside edge of skid, using dimensions given in Figure 1 or 2.

#### **NOTE**

Figure 1 is for Model 20 ROZ and mounts battery rack on *right* side when viewed from generator end.

Figure 2 is for Models 30/45 RZ and mounts battery on *left* side when viewed from generator end.

4. Drill two .343 in. (8.71 mm) dia. holes 15.0 in. (381 mm) apart in top of skid using battery rack as a template.
5. Mount battery rack to skid using two screws, lock washers, and nuts.

#### **NOTE**

When installing battery rack in a housed unit, the rack must be at least 1 in. (25 mm) from outside edge of skid to provide adequate door clearance and the battery must have .38 inches (9 mm) of engine clearance.

#### **NOTE**

When installing battery rack on an unhoused unit, battery rack should be flush with outside edge of skid.

6. Place battery on rack with terminals toward the generator set. Place battery clamp on front edge of battery.
7. Insert hold down stud into rack and through battery clamp. Install flat washer and lock nut, do not final tighten. Repeat for other side of battery.

8. With both studs installed, tighten nuts evenly until battery is secure. Do not overtighten.
9. Attach red battery cable to starter solenoid terminal on engine and to battery positive (+) terminal.
10. With controller master switch in OFF position, attach black battery cable to engine block. Place appropriate 5/16" or 1/2" internal-external tooth lock washer between engine block and battery cable terminal. Connect black battery cable to battery negative (-) terminal. Replace doors, if unit is housed.

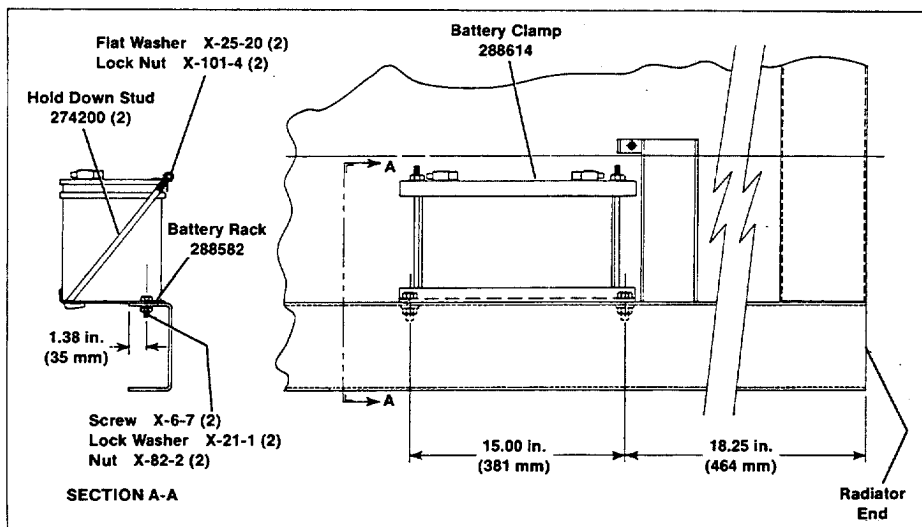


Figure 1. Mounting Battery Rack (20 ROZ)

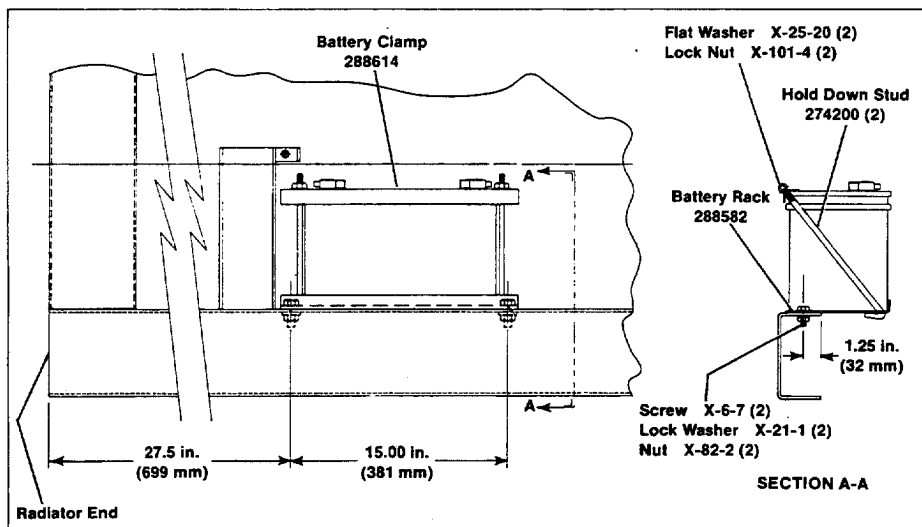


Figure 2. Mounting Battery Rack (30/45 RZ)

#### PARTS LISTING

Part No.	Description	Qty.
X-6-7	Screw, 5/16-18 x 1"	2
X-21-1	Washer, 5/16" Lock	2
X-22-16	Washer, 5/16" Internal/External Tooth Lock	1
X-22-26	Washer, 1/2" Internal/External Tooth Lock	1
X-25-20	Washer, 5/16" Flat	2
X-82-2	Nut, 5/16-18	2
X-101-4	Nut, 5/16-24 Lock	2
X-545-37	Cable, Battery (+)	1
X-545-53	Cable, Battery (-)	1
274200	Stud, Hold Down	2
288582	Rack, Battery	1
288614	Clamp, Battery	1