



Anticipatory Alarm Kit #PA-255072 60/80 ROZ - (6-Cylinder Engines) Fast-Response II

The Anticipatory Alarm Kit provides the switches which allow monitoring of three functions—low water temperature, anticipatory high water temperature and anticipatory low oil pressure. This kit is used in conjunction with either the Decision Maker II or the Remote Annunciator option. The low water temperature indicator activates if optional engine block heater is not working and/or water temperature may be too low (below 80°F, 27°C) for ten-second start-up. The anticipatory high water temperature indicator activates if engine coolant approaches shutdown level. The anticipatory low oil pressure indicator activates if engine oil pressure approaches shutdown level.

WARNING

UNIT STARTS WITHOUT NOTICE! Units with Automatic Transfer Switches start automatically. Potential injury or electrocution can result. Turn Generator Master Switch on controller to OFF position and remove battery cables (remove negative lead first and reconnect it last) to disable generator set before working on any equipment connected to generator.

WARNING

HOT COOLANT! Engine coolant is pressurized and hot enough to cause severe burns. If generator set is equipped with a coolant recovery tank, check coolant level at tank. If necessary to check coolant level at radiator or surge tank (on city-water or remote radiator-cooled sets), place a rag over the cap and turn slowly to release pressure before removing cap.

NOTE

Reroute leads in plastic conduit as necessary to reach switches. In some cases, earlier wiring harnesses may require extension of leads and/or terminal changes.

MOUNTING AND CONNECTION

1. Place controller master switch to OFF position. Disconnect battery of generator set, negative lead first.
2. With generator set sufficiently cooled, drain the coolant into a suitable container.

NOTE

Petcock valve is located on radiator bottom and/or on engine block.

3. Remove pipe plugs for low water temperature switch, anticipatory high water switch, and anticipatory low oil pressure switch. See Figure 1 for locations.
4. Coat threads of switches with pipe sealant and install in their respective locations. See Figure 1.
5. Connect lead 35A to one screw terminal of low water temperature switch. Connect ground lead N to the other screw terminal of switch.
6. Connect lead 40A to screw terminal of anticipatory high water temperature switch.
7. Connect lead 41A to push-on terminal of anticipatory low oil pressure switch.
8. Close petcock valve on bottom of radiator and/or engine block. Fill cooling system to proper level with fresh coolant.
9. Check that the controller master switch is in the OFF position. Reconnect battery, negative lead last.
10. Test run the generator set for a few minutes and check for leaks at switches.

CAUTION

Special attention should be given when checking for proper coolant level. After a radiator has been drained, it normally requires some time before complete refill of all air cavities takes place.

PARTS LISTING

Part No.	Qty.	Description
240976	1	Anticipatory High Water Temperature Switch
271662	1	Anticipatory Low Oil Pressure Switch
290090	1	Low Water Temperature Switch

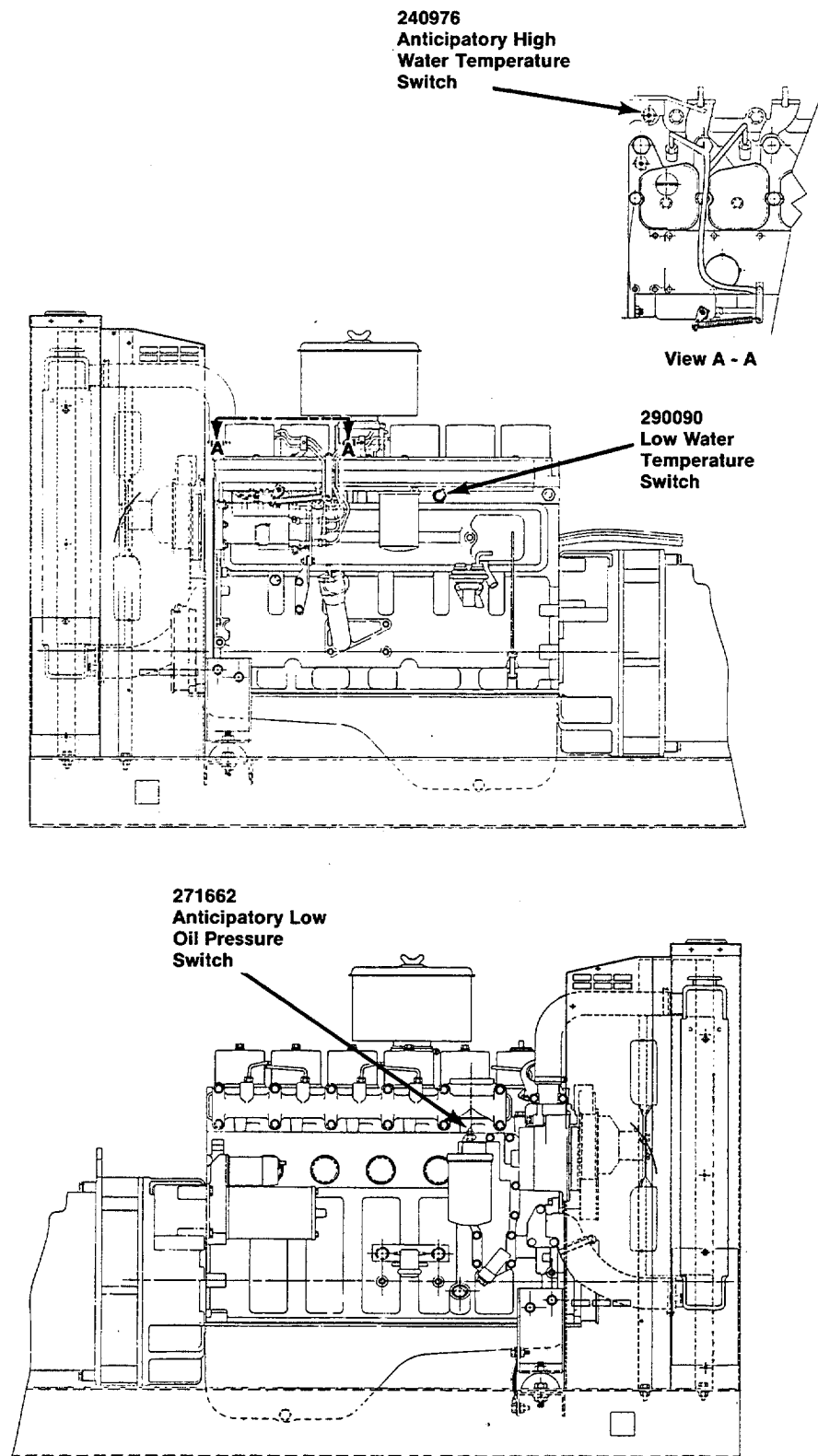


Figure 1. Anticipatory Alarm Locations