



Exhaust Mounting Kits 20ROZ Fast-Response II

Models	Exhaust Mounting Kits		Silencer Kits	
	Critical	Industrial	Critical	Industrial
20ROZ	PA-255260	PA-255259	PA-255258	PA-255257

The Silencer and Exhaust Mounting Kits are intended for installation on a housed generator set. Exhaust Mounting Kits do not include silencers.

Refer to the respective set of general installation instructions and follow all safety precautions when assembling. See Figure 1 and part listing for identification and location of parts.

WARNING

UNIT STARTS WITHOUT NOTICE! Units with Automatic Transfer Switches start automatically. Potential injury or electrocution can result. Turn Generator Master Switch on controller to OFF position, and remove battery cables (remove negative lead first and reconnect it last) to disable generator set before working on any equipment connected to generator.

WARNING

HOT PIPING! An engine gets hot while running, and exhaust system components get extremely hot. Do not work on generator set until unit is allowed to cool.

MOUNTING INDUSTRIAL-TYPE SILENCER

1. Place controller master switch to OFF position. Disconnect battery of generator set, negative lead first.
2. Remove housing doors to expose generator set.
3. Coat threads on both ends of pipe with pipe sealant and install into engine exhaust manifold. Hand-tighten only.
4. Lower silencer (inlet side first) through hole in housing roof and install onto exhaust pipe. Tighten silencer using a large pipe wrench at inlet end.
5. Check that controller master switch is in the OFF position. Reconnect battery, negative lead last. Replace doors.

MOUNTING CRITICAL-TYPE SILENCER

1. Place controller master switch to OFF position. Disconnect battery of generator set, negative lead first.
2. Remove housing doors to expose generator set.
3. Coat threads on both ends of rain disc/pipe assembly with pipe sealant and install into engine exhaust manifold.
4. Install elbow onto rain disc/pipe assembly and tighten. See Figure 1 for approximate angle.
5. Position silencer bracket using dimensions given in Figure 1. Using silencer bracket as a template, drill two 281 in. (7.1 mm) dia. holes in housing roof. Locate holes at each end of silencer bracket.
6. Install rubber mounts to housing roof using two lock washers and hex. nuts.
7. Mount silencer bracket to rubber mounts using two screws and lock washers.
8. Coat threads on inlet end of silencer with pipe sealant and install into elbow.

NOTE

Angle of elbow may require adjustment so that silencer fits properly in groove of bracket.

9. Thread hex. nuts on studs about 1 inch (25 mm). Place silencer strap over silencer and attach studs. With studs through silencer bracket, install, and tighten lock nuts. Tighten hex. nuts on studs against silencer bracket.
10. Check that controller master switch is in the OFF position. Reconnect battery, negative lead last. Replace doors.

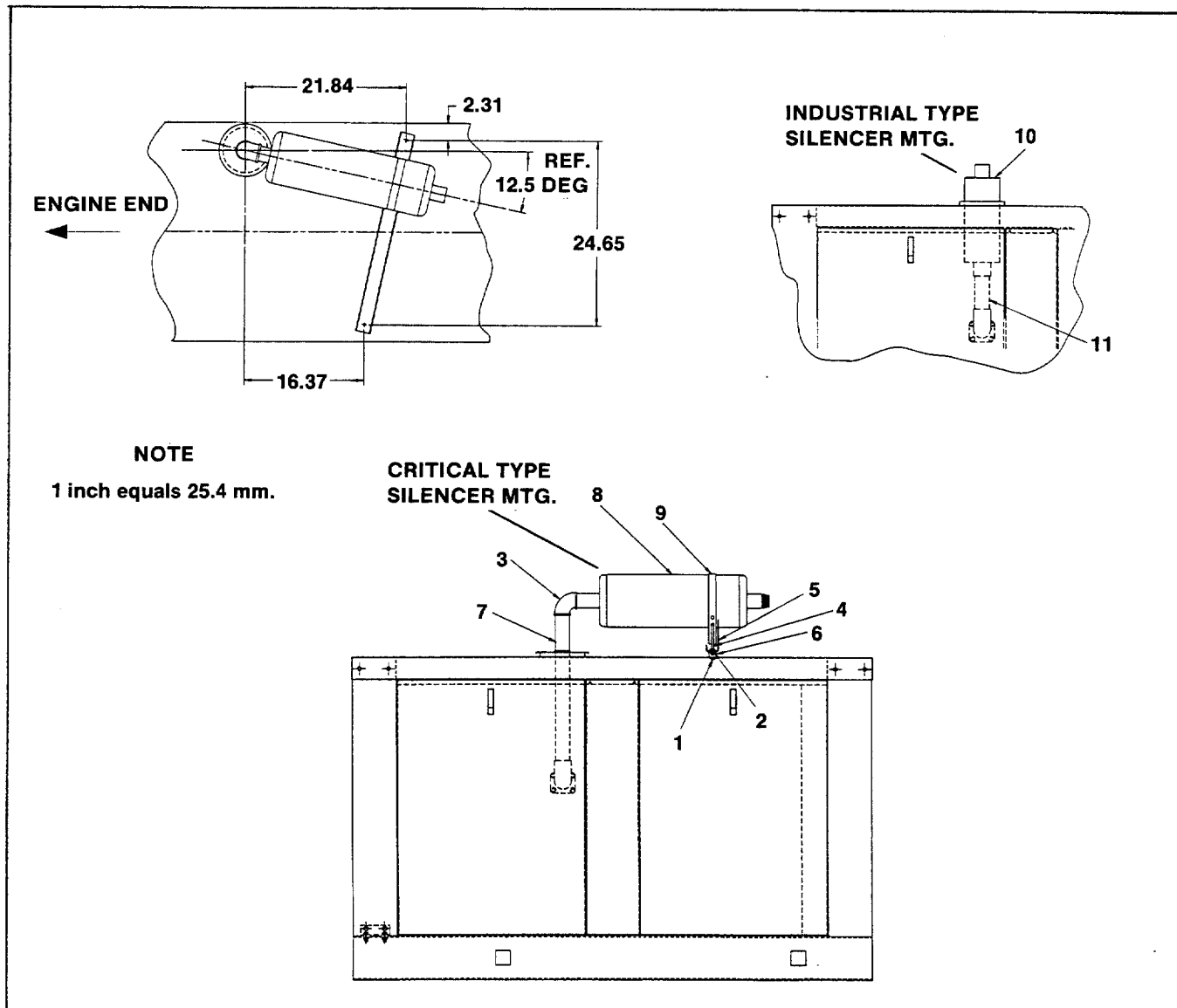


Figure 1. Silencer Mounting

PARTS LISTING

Ref. No.	Description	Qty.	PA-255259	PA-255260	PA-255257	PA-255258
1	Screw, 1/4-20 x 3/8"	2		X-5-17		
	Washer, 1/4 Lock	4		X-20-1		
	Nut, 1/4-20 Hex.	4		X-81-1		
2	Nut, 1/4-20 Lock	2		X-101-8		
3	Elbow, 1 1/2 NPT	1		151771		
4	Stud	2		253307		
5	Bracket, Silencer	1		253310		
6	Mount, Rubber	2		259632		
7	Rain Disc/Pipe Assembly	1		255511		
8	Silencer, Critical	1			289714	
9	Strap, Silencer	1		290864		
10	Silencer, Industrial	1			150201	
11	Pipe, 6" x 1 1/2 NPT	1	155029-1			