



Exhaust Mounting Kits 20RZ Fast-Response II

| Kits | Critical | Industrial |
|--|------------------------|------------------------|
| Exhaust Mounting Kits Silencer Kits | PA-255328 PA-255347 | PA-255327 PA-255346 |

The Silencer and Exhaust Mounting Kits are intended for installation on a housed generator set. Exhaust Mounting Kits do not include silencers.

Refer to the mounting instructions and follow all safety precautions when assembling. See Figure 1 and parts listing for identification and location of parts.

WARNING

UNIT STARTS WITHOUT NOTICE! Units with Automatic Transfer Switches start automatically. Potential injury or electrocution can result. Turn Generator Master Switch on controller to OFF position and remove battery cables (remove negative lead first and reconnect it last) to disable generator set before working on any equipment connected to generator.

WARNING

HOT PIPING! An engine gets hot while running, and exhaust system components get extremely hot. Do not work on generator set until unit is allowed to cool.

MOUNTING SILENCER

- Place controller master switch to OFF position. Disconnect battery of generator set, negative lead first.
- Remove housing doors to expose generator set.

- Attach exhaust adapter to engine exhaust manifold and install 1.75 in. clamp. Do not final tighten.
- Slide mounting bands over silencer and align silencer inlet over exhaust pipe, do not secure. Position mounting bands according to dimensions given in Figure 1.
- With mounting bands perpendicular to housing edge, mark position of holes on housing roof. Silencer should not extend beyond housing perimeter. Remove silencer.
- Drill four .281 in. (7.1mm) dia. holes in housing roof.
- Install rubber mounts to housing roof using four screws and lock washers.
- Open mounting bands to their maximum diameter and slide over silencer.
- Align holes in mounting bands with rubber mount studs. Install silencer onto exhaust pipe and connect 2 in. clamp, do not final tighten.
- Install mounting bands to rubber mounts using four lock washers and nuts.
- Tighten adjustment screw on each mounting band to secure silencer.
- Final tighten clamps on exhaust adapter and silencer inlet.
- Check that controller master switch is in the OFF position. Reconnect battery, negative lead last. Replace doors.

PARTS LISTING

| Ref. No. | Description | Qty. | PA-255327 | PA-255328 | PA-255346 | PA-255347 |
|----------|------------------------|------|-----------|-----------|-----------|-----------|
| 1 | Screw, 1/4 - 20 x 1/2" | 4 | X-5-13 | X-5-13 | | |
| | Washer, 1/4" Lock | 4 | X-20-1 | X-20-1 | | |
| 2 | Mount, Rubber | 4 | 259632 | 259632 | | |
| 3 | Washer, 1/4" Lock | 4 | X-20-1 | X-20-1 | | |
| | Nut, 1/4 - 20 | 4 | X-81-1 | X-81-1 | | |
| 4 | Band, Mounting | 2 | 255329 | 279380 | | |
| 5 | Adapter, Exhaust | 1 | 255330 | 255330 | | |
| 6 | Clamp, 2 in. | 1 | X-722-5 | X-722-5 | | |
| 7 | Clamp, 1.75 in. | 1 | 277706 | 277706 | | |
| 8 | Silencer, Critical | 1 | | | | 255333 |
| | Silencer, Industrial | 1 | | | 255332 | |

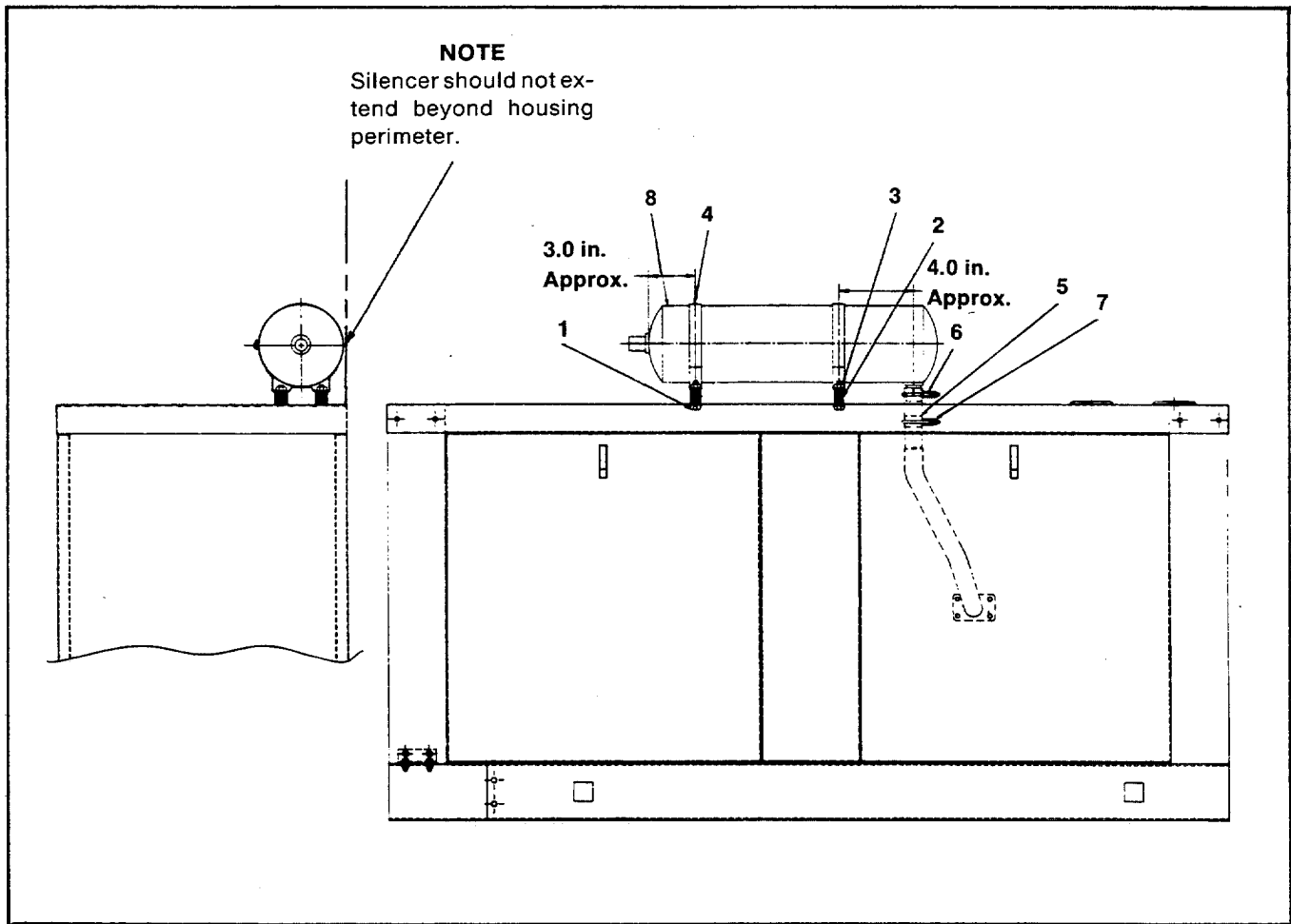


Figure 1. Silencer Mounting.