



### Silencer Kits 15RMY (Wisconsin Engine-15 VG4D)

Silencer Kit No.	Type
PA-256390 PA-256391	Critical Residential

The Silencer Kit is designed for installation on a housed generator set. Select the Silencer Kit (critical or residential) appropriate for the application. Refer to the following procedure to install the Silencer Kit. Observe all safety precautions during installation and refer to Figure 1 and the parts listing to locate and identify kit components.

#### **WARNING**

**UNIT STARTS WITHOUT NOTICE!** Units with Automatic Transfer Switches start automatically. Potential injury or electrocution can result. Turn Generator Main Switch on controller to OFF/RESET position and remove battery cables (remove negative lead first and reconnect it last) to disable generator set before working on any equipment connected to the generator.

#### **WARNING**

**HOT PIPING!** An engine gets hot while running and exhaust components get extremely hot. Do not work on the generator set until unit is allowed to cool.

#### **INSTALLING SILENCER KIT.**

1. Move Generator Main Switch to the OFF/RESET position.
2. Disconnect battery cables from battery (negative lead first).
3. Remove doors of generator housing to expose generator set.
4. Thread the 5 in. exhaust pipe (X-223-2) into engine exhaust manifold. Hand-tighten until snug.
5. Slide narrow end of flexible exhaust tube (X-797-13) over end of exhaust pipe. Secure flexible exhaust tube to exhaust pipe with 2 in. clamp (X-722-5). Do not final tighten.

#### **NOTE**

The flexible exhaust tube must overlap exhaust pipe a minimum of 2 in. (51 mm).

6. Insert unthreaded end of remaining exhaust pipe (X-396-14 or X-396-15) into the end of the flexible exhaust tube. Install 2 1/2 in. clamp (X-722-2), but do not final tighten.

#### **NOTE**

Flexible exhaust tube must overlap exhaust pipe a minimum of 2 in. (51 mm).

7. With the center collar facing upward, slide rain disc (291118) over end of exhaust pipe. Maintain a clearance of 1/4 to 1/2 in. between rain disc and generator housing. Install 2 1/2 in. clamp (X-722-5), but do not final tighten.
8. Thread pipe elbow (X-215-6) onto threaded end of exhaust pipe. Hand-tighten until snug and elbow faces the generator end of the set.
9. Position silencer brackets (290867 or 290866) and silencer (285720 or 289715) on generator housing as shown in Figure 1. Silencer brackets should align with roof supports in generator housing.
10. Raise or lower exhaust pipe to align with silencer inlet.
11. With silencer assembly parallel to housing edge, mark position of silencer brackets on generator housing. Remove silencer.
12. Using silencer brackets as templates, drill four .375 in. (9.4 mm) holes through housing and housing supports.
13. Position silencer (285720 or 289715) on silencer brackets. Observe direction of air flow as indicated on silencer. Thread silencer into elbow until tight.
14. Thread hex nut (X-82-2) on angle bolt (290869) approximately 1 in. (25 mm). Place silencer strap (290864 or 290865) over silencer and attach angle bolts. Place washer (X-25-85) over threaded end of angle bolts and insert through bracket and housing roof. Install and alternately tighten lock nuts (X-101-6) with washers (X-25-85). Tighten hex nuts on angle bolts against silencer bracket.
15. Thread exhaust outlet (X-215-6) onto silencer until snug. Exhaust outlet elbow must point away from controller face.
16. Final tighten all clamps on exhaust pipe and exhaust tube.
17. Verify that controller Main Switch is in the OFF/RESET position. Reconnect battery cables, negative lead last.

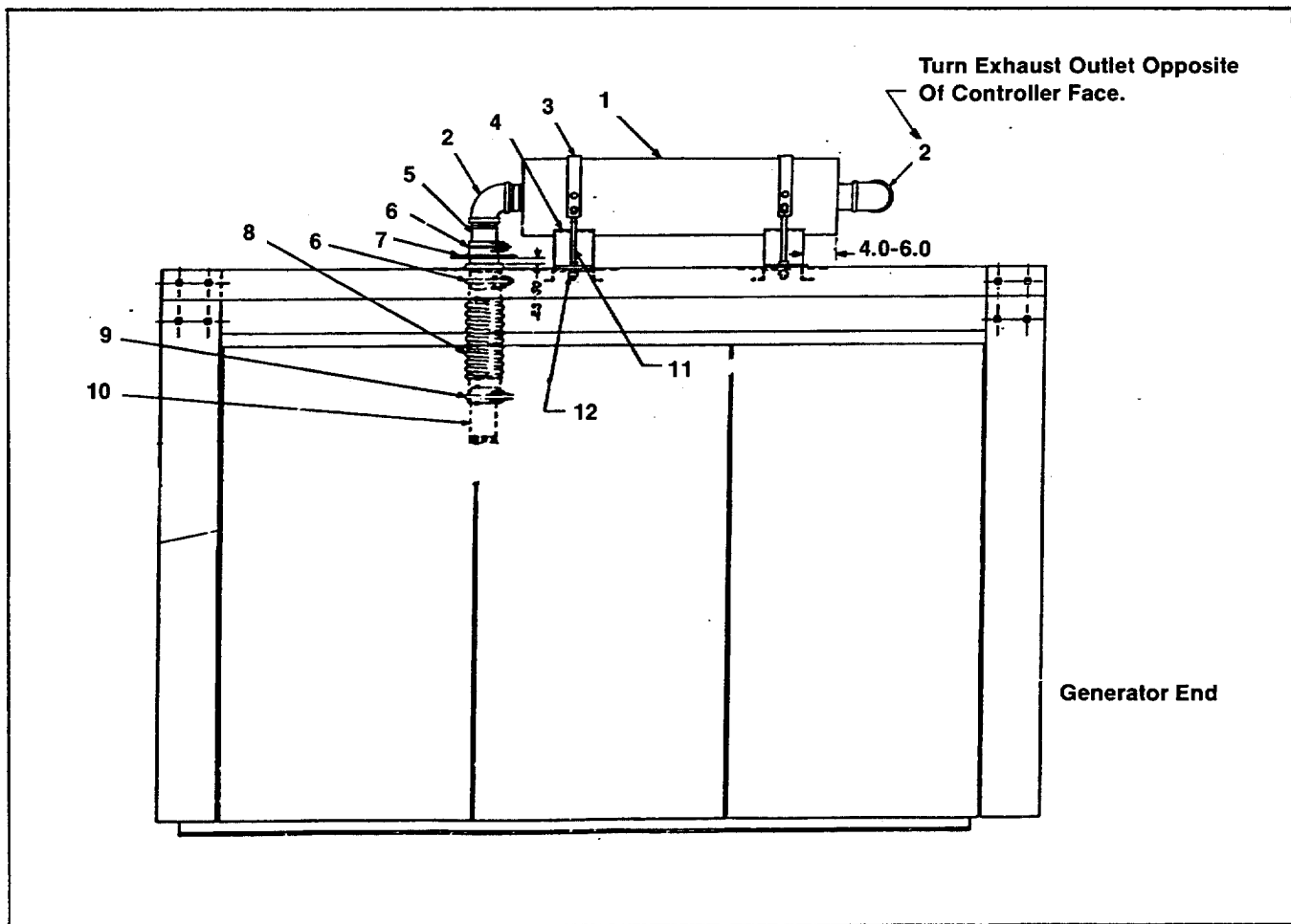


Figure 1. Service Views

#### Parts Listing

Ref No.	Description	Qty.	PA-256390	PA-256391
1	Silencer, critical	1	289715	
	Silencer, residential	1		285720
2	Elbow, pipe	2	X-215-6	X-215-6
3	Strap, silencer	2	290865	290864
4	Bracket, silencer	2	290867	290866
5	Pipe, 2 in. N.P.T.F. x 11 in.	1	X-396-15	
	Pipe, 2 in. N.P.T.F. x 10 in.	1		X-396-14
6	Clamp, 2-1/2 in.	2	X-722-2	X-722-2
7	Disc, rain	1	291118	291118
8	Hose, flexible exhaust	1	X-797-13	X-797-13
9	Clamp, 2 in.	1	X-722-5	X-722-5
10	Pipe, 1 1/2 N.P.T.F. x 5 in.	1	X-223-2	X-223-2
11	Bolt, angle	4	290869	290869
12	Nut, stop 5/16-18	4	X-101-16	X-101-16
	Nut, hex 5/16-18	4	X-82-2	X-82-2
	Washer, plain 11/32 x 3/4 x 16 ga.	8	X-25-85	X-25-85