



Flexible Fuel Line Kit PA-258993 For 20 - 100ROZ Standby Generators using Cummins 4B and 6B Engines

The flexible fuel line kit provides a flexible connection between the engine fuel fittings and the fuel tank plumbing. This kit is designed for installation on 20 through 100ROZ standby generator sets powered by Cummins 4B and 6B diesel engines. After the flexible fuel lines are installed, verify that all connections are tight then bleed air from the fuel system according to the engine manufacturer's instructions. If air is trapped in the fuel system, hard starting and/or erratic operation will occur. Observe all safety precautions during kit installation. For additional information on fuel system installation, consult the Standby Generator Installation Guide (ES-420).

WARNING

FIRE HAZARD! Spilled fuel may ignite on contact with hot engine parts. Wipe up all spilled fuel after bleeding fuel system.

WARNING

DANGEROUS FUELS! Use extreme caution when handling, storing, and using fuels—all fuels are highly explosive in a vapor state. Store fuel in a well-ventilated area away from spark producing equipment and out of the reach of children. Never add fuel to the tank while the engine is running to prevent spilled fuel from igniting on contact with hot parts or from ignition spark. Keep fuel lines and connections tight and in good condition—don't replace flexible fuel lines with rigid lines. Flexible sections are used to avoid breakage due to vibration.

WARNING

UNIT STARTS WITHOUT NOTICE! Units with Automatic Transfer Switches start automatically. Potential injury or electrocution can result. Turn generator master switch on controller to OFF position and remove battery cables (remove negative lead first and reconnect it last) to disable generator set before working on any equipment connected to the generator.

WARNING

FLASH FIRE! To avoid the possibility of a flash fire, do not smoke or permit flame or spark to occur near fuel line, fuel filter, fuel pump, or other sources of spilled fuel or fuel vapors.

Installation

Location of kit components and fuel inlet and return connections on 20 through 60ROZ sets with Cummins 4B engines is shown in Figure 1. Refer to Figure 2 to identify these items on generators powered by Cummins 6B engines. These illustrations are representative of most units, however your generator may differ slightly from those shown.

1. Thread the hose fitting (X-652-1) into the fuel pump inlet until tight.
2. Attach one end of the $\frac{3}{8}$ x 25 in. fuel line (X-651-19) to the installed fuel pump hose fitting. Secure this connection with hose clamp (X-426-10).
3. Attach the other end of the fuel line to the fuel tank outlet fitting and secure with hose clamp.
4. Connect the $\frac{5}{16}$ x 30 in. fuel line (X-386-70) to the engine fuel return line and secure with hose clamp. Since this line drains excess fuel from the engine, the other end of the $\frac{5}{16}$ - 30 in. fuel line should be connected to the fuel tank inlet fitting; install a hose clamp at this connection.

Parts Listing

Description	Qty.	Part Number
Line, fuel ($\frac{5}{16}$ x 30 in.)	1	X-386-70
Clamp, hose	4	X-426-10
Line, fuel ($\frac{3}{8}$ x 25 in.)	1	X-651-19
Fitting, hose	1	X-652-1

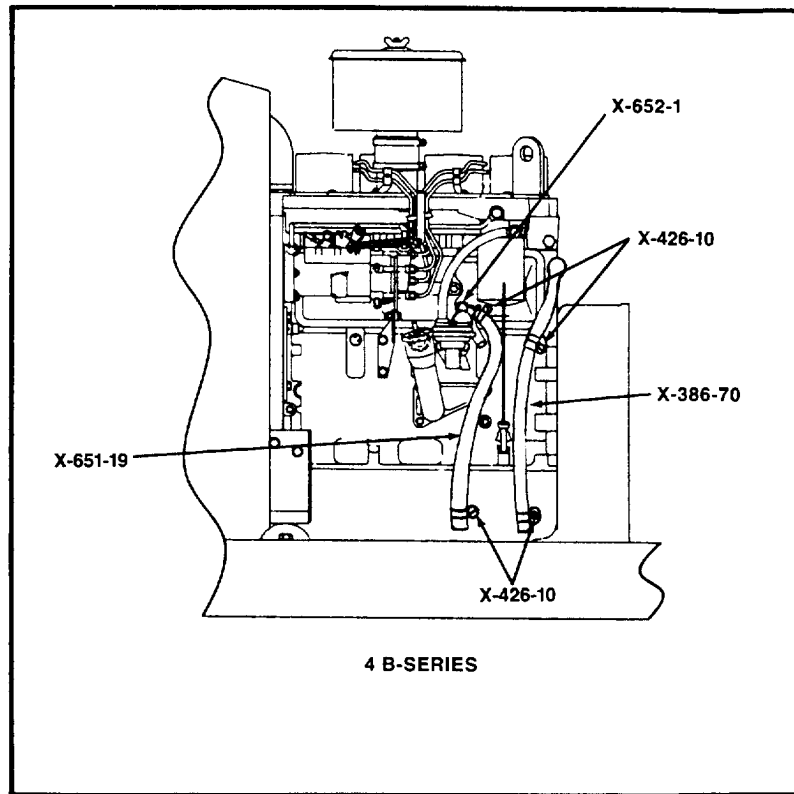


Figure 1. Flexible Fuel Line Installation 20 -60ROZ (Cummins 4B Engine)

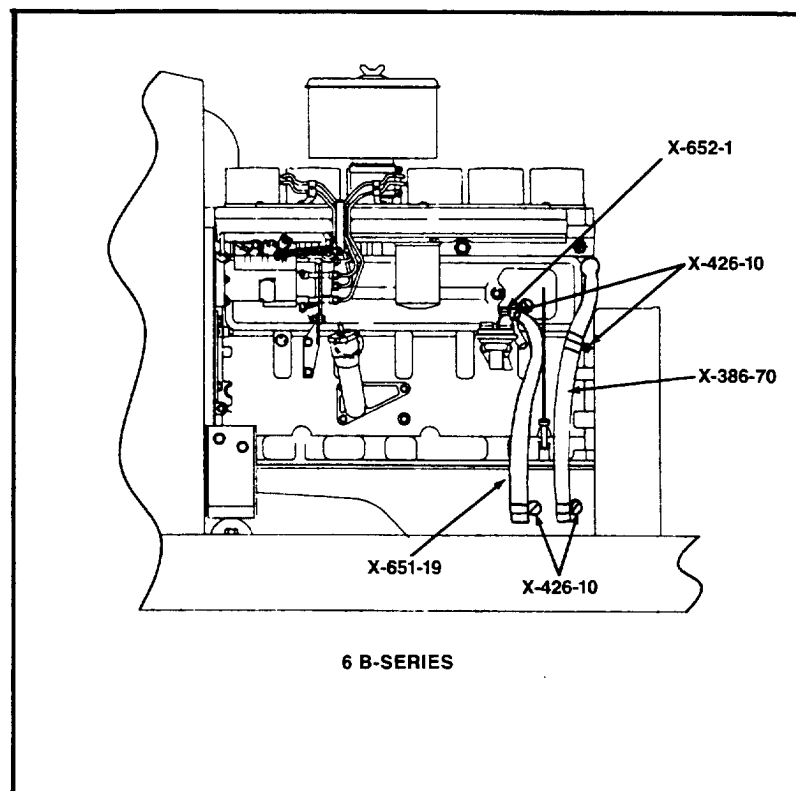


Figure 2. Flexible Fuel Line Installation 80 - 100ROZ (Cummins 6B Engine)