

**INSTALLATION INSTRUCTIONS**

**Air-Vac™ Cooling Kit PA-256361  
For 15 kW Standby Generator Sets**

The Air-Vac™ cooling kit reverses the air flow through the generator set. The reversed air flow evacuates warm air created by the engine and other components from the housing and pulls in cool air.



**WARNING**

**Accidental starting.  
Can cause severe injury or death.**

Disconnect battery cables before working on generator set (negative lead first and reconnect it last).

**Accidental starting can cause severe injury or death.** Turn generator master switch to OFF position, disconnect power to battery charger, and remove battery cables (remove negative lead first and reconnect it last) to disable generator set before working on any equipment connected to generator. The generator set can be started by automatic transfer switch or remote start/stop switch unless these precautions are followed.

**WARNING**

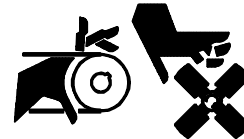


**Hot engine and exhaust system.  
Can cause severe injury or death.**

Do not work on generator set until unit is allowed to cool.

**Hot parts can cause severe injury or death.** Do not touch hot engine parts. An engine gets hot while running and exhaust system components get extremely hot.

**WARNING**



**Rotating parts.  
Can cause severe injury or death.**

Do not operate generator set without all guards, screens, or covers in place.

**Flying projectiles can cause severe injury or death.** Retorque all crankshaft and rotor hardware after servicing. When making adjustments or servicing generator set, do not loosen crankshaft hardware or rotor thru-bolt. If rotating crankshaft manually, direction should be clockwise only. Turning crankshaft bolt or rotor thru-bolt counterclockwise can loosen hardware and result in serious personal injury from hardware or pulley flying off engine while unit is running.

**INSTALLATION**

1. Move generator master switch to OFF position, allow generator set to cool.
2. Disconnect generator set battery cables, negative lead first.
3. Remove flywheel screen, see Figure 1.
4. Remove flywheel by driving out the starting crank pin in the crankshaft and remove the flywheel nut and washer. Hold the flywheel firmly, pulling up at the same time. Strike the end of the crankshaft with a babbitt hammer. The flywheel will then slide off the crankshaft. Save key for reuse.

**NOTE**

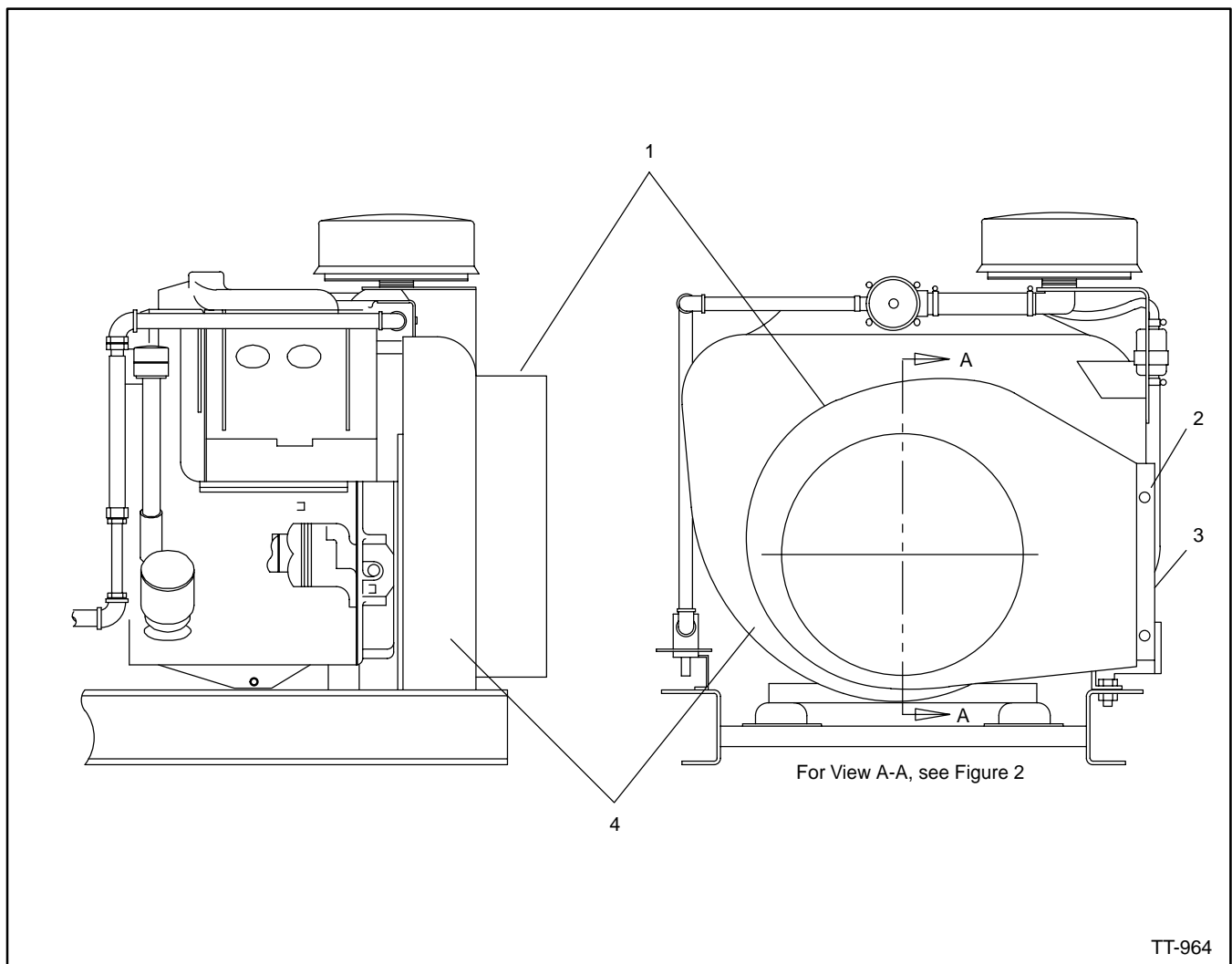
Do not use a hard hammer as it may ruin the crankshaft and bearings.

5. Install kit flywheel (256348) with key and 1 1/4-12 elastic stop hex nut (X-101-18). Tighten nut to 100 ft. lbs. (135.6 Nm). See Figure 2.

6. Install fan adapter (256349) on flywheel with six 1/2-13 x 1.00-in. hex screws (X-129-17). Tighten screws to 68 ft. lbs. (92.2 Nm). See Figure 2.
7. Position the blower housing (256354) as shown in Figure 1. For housed models, the opening can be located at the 3, 6, 9, or 12 o'clock positions.
8. Install blower housing on flywheel housing with seven 1/4-20 x 0.50-in. hex screws (X-465-6).
9. Install blower rotor (256086) on fan adapter with six 1/4-20 x 0.625-in. hex screws (X-465-2). Tighten to 96 in. lbs. (10.8 Nm).
10. Attach blower plate (256083) to blower housing with eight 8-32 x 0.375-in. self-tapping screws (X-67-59) and 0.281 x 0.625 x 0.065-in. plain washers (X-25-40).
11. Place screen (256350) over opening on blower housing and attach with four 8-32 x 0.375-in. self-tapping screws (X-67-59) and plain washers, see Figure 1.
12. If required by application, install ducting to opening of blower housing.
13. Reconnect battery cables, negative lead last.

**NOTE**

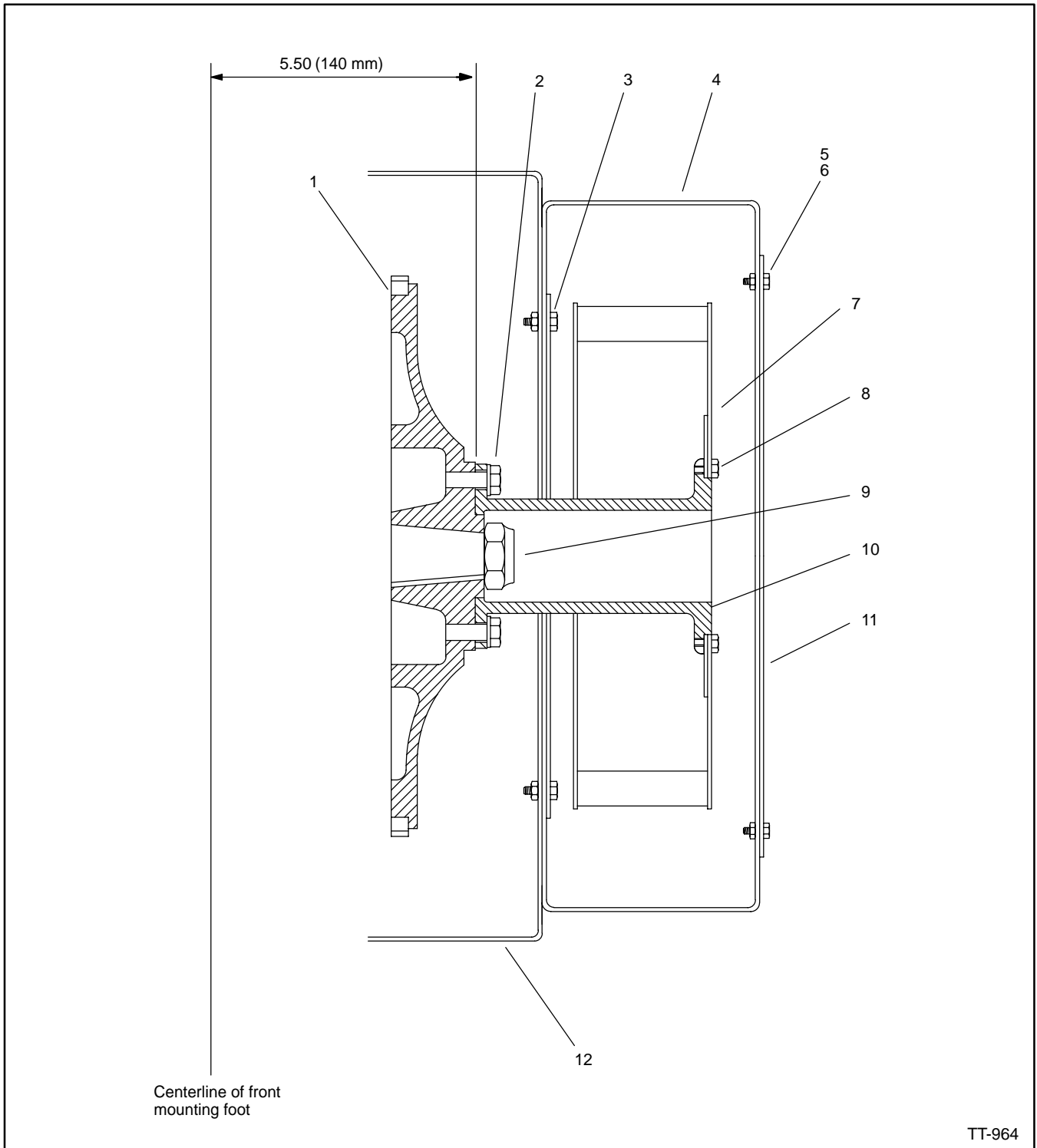
If application requires ducting, flexible ductwork must be used. Vacuum draw on ducting must not exceed a reading of 1/2-inch column of water.



1. Air-Vac™ Cooling Housing
2. Screw (X-67-59)

3. Screen (256350)
4. Engine Flywheel Housing

**Figure 1. Flywheel/Blower Housing Location**



TT-964

- |                              |                                |
|------------------------------|--------------------------------|
| 1. Flywheel (256348)         | 7. Blower Rotor (256086)       |
| 2. Screw (X-129-17) (qty. 6) | 8. Screw (X-465-2) (qty. 7)    |
| 3. Screw (X-465-6) (qty. 7)  | 9. Elastic Stop Nut (X-101-18) |
| 4. Blower Housing (256354)   | 10. Fan Adapter (256349)       |
| 5. Screw (X-67-59) (qty. 6)  | 11. Blower Plate (256083)      |
| 6. Washer (X-25-40) (qty. 6) | 12. Engine Flywheel Housing    |

**Figure 2. Air-Vac Kit—View A-A**

## Parts List

Kit PA-226361		
Description	Qty.	Part Number
Nut, 1 1/4-12 elastic stop	1	X-101-18
Screw, 1/2-13 x 1.00 in. hex	6	X-129-17
Washer, 0.281 x 0.625 x 0.065 in. plain	12	X-25-40
Screw, 1/4-20 x 0.625 in. hex	6	X-465-2
Screw, 1/4-20 x 0.50 in. hex	7	X-465-6
Screw, 8-32 x 0.375 in. self-tapping	12	X-67-59
Plate, blower	1	256083
Rotor, blower	1	256086
Flywheel	1	256348
Adapter, fan	1	256349
Screen	1	256350
Housing, blower	1	256354