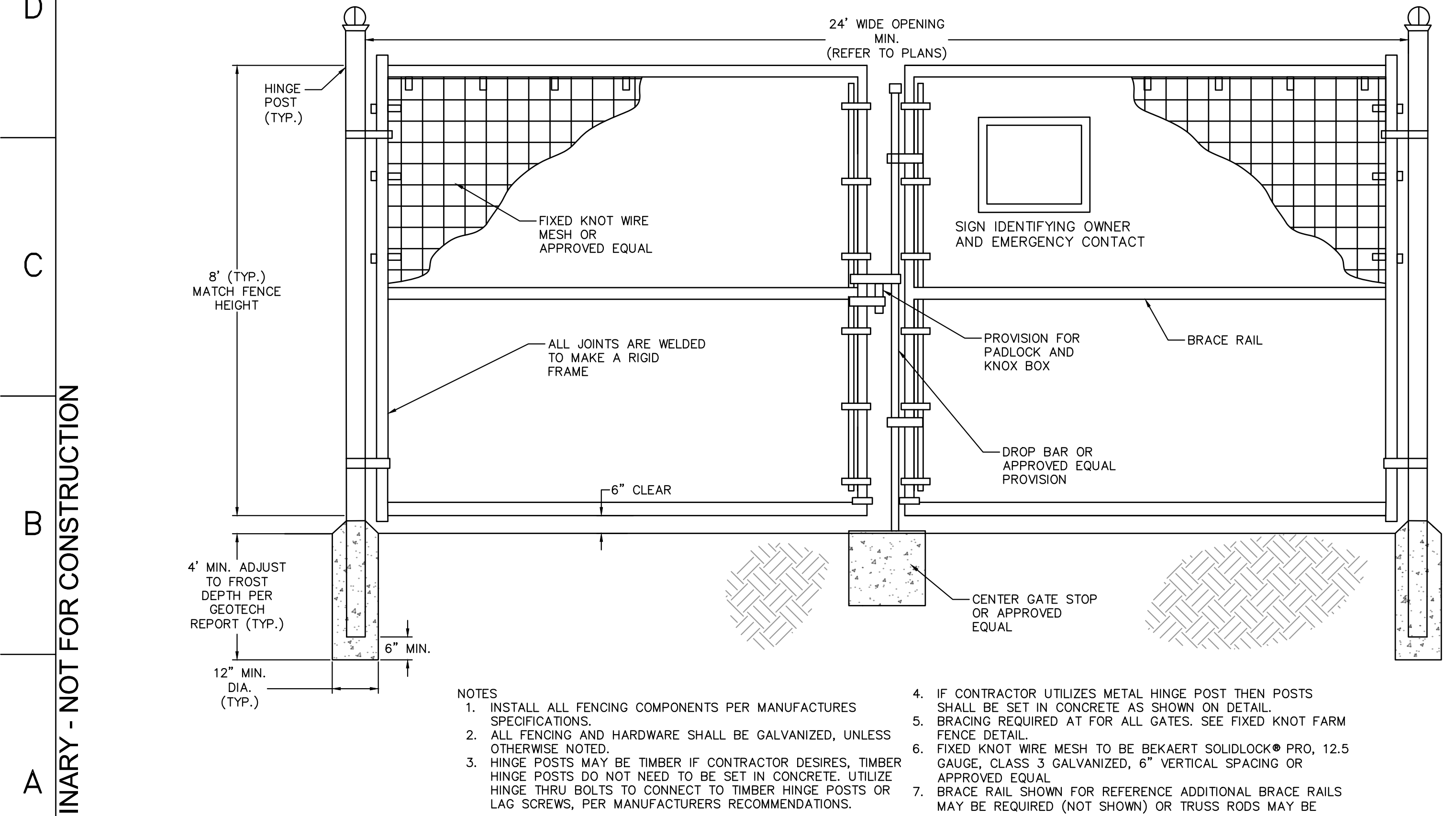


- NOTES
1. INSTALL ALL FENCING COMPONENTS PER MANUFACTURES SPECIFICATIONS.
 2. ALL FENCING AND HARDWARE SHALL BE GALVANIZED, UNLESS OTHERWISE NOTED.
 3. ALL SQUARE POSTS TO BE MIN. 5"X5" NOMINAL SIZE OR ROUND POST WITH MIN. 5" OR 6" DIAMETER PRESSURE TREATED WOOD OR APPROVED EQUAL. PREFER POSTS TO HAVE A CHAMFERED TOP.
 4. ALL LINE POST TO BE SET TO A MIN. DEPTH OF 4' BELOW GRADE, ALL CORNER, END OR GATE POSTS SHALL BE SET TO A MIN. DEPTH OF 6' BELOW GRADE, UNLESS OTHERWISE NOTED.
 5. FIXED KNOT WIRE MESH TO BE BEKAERT SOLIDLOCK® PRO, 12.5 GAUGE, CLASS 3 GALVANIZED, 6" VERTICAL SPACING OR APPROVED EQUAL.
 6. BRACING IS REQUIRED AT ALL CORNER, END, AND GATE POSTS. DOUBLE BRACING (TWO BRACE ASSEMBLIES IN A ROW) SHOULD BE USED FOR STRAIGHT RUNS OF FENCE THAT EXCEED 1,000 LF. AN ADDITIONAL BRACE ASSEMBLY SHOULD BE INSTALLED MID SPAN FOR STRAIGHT RUNS OF FENCE THAT EXCEED 1,320 LF. ADDITIONAL BRACING MAY BE STILL BE REQUIRED OVER UNEVEN TERRAIN, CONTRACTOR SHALL INSTALL ADDITIONAL BRACING AS NEEDED IF DEFLECTION IS NOTICED DURING TENSIONING.

1 FIXED KNOT FARM FENCE (WITH WILDLIFE GAP)
C-700

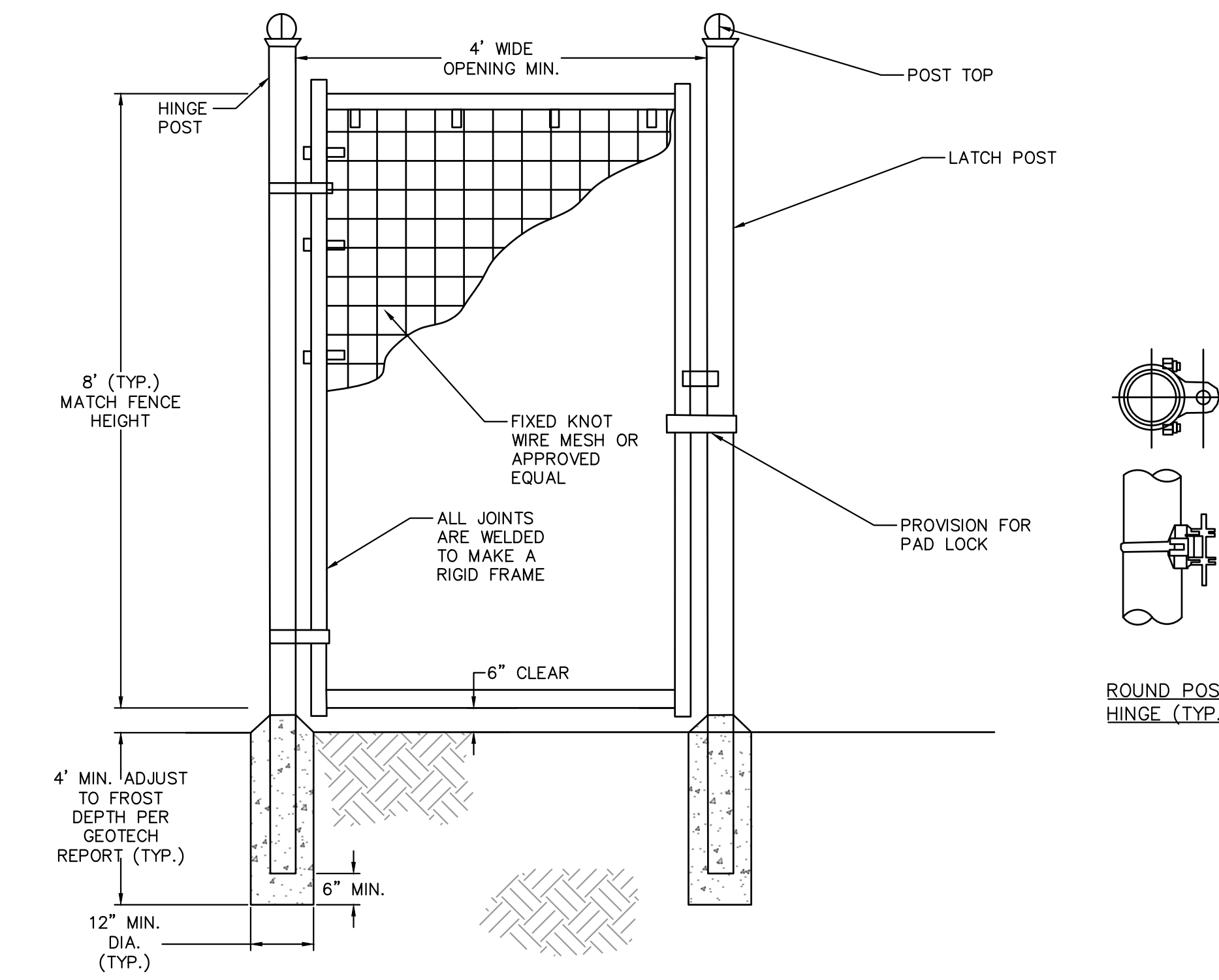
SCALE: NTS



- NOTES
1. INSTALL ALL FENCING COMPONENTS PER MANUFACTURES SPECIFICATIONS.
 2. ALL FENCING AND HARDWARE SHALL BE GALVANIZED, UNLESS OTHERWISE NOTED.
 3. HINGE POSTS MAY BE TIMBER IF CONTRACTOR DESIRES, TIMBER HINGE POSTS DO NOT NEED TO BE SET IN CONCRETE. UTILIZE HINGE THRU BOLTS TO CONNECT TO TIMBER HINGE POSTS OR LAG SCREWS, PER MANUFACTURERS RECOMMENDATIONS.
 4. IF CONTRACTOR UTILIZES METAL HINGE POST THEN POSTS SHALL BE SET IN CONCRETE AS SHOWN ON DETAIL.
 5. BRACING REQUIRED AT FOR ALL GATES. SEE FIXED KNOT FARM FENCE DETAIL.
 6. FIXED KNOT WIRE MESH TO BE BEKAERT SOLIDLOCK® PRO, 12.5 GAUGE, CLASS 3 GALVANIZED, 6" VERTICAL SPACING OR APPROVED EQUAL.
 7. BRACE RAIL SHOWN FOR REFERENCE ADDITIONAL BRACE RAILS MAY BE REQUIRED (NOT SHOWN) OR TRUSS RODS MAY BE REQUIRED PER MANUFACTURES RECOMMENDATIONS

3 24' WIDE FIXED KNOT FARM FENCE DOUBLE SWING GATE (WITH WILDLIFE GAP)
C-700

SCALE: NTS

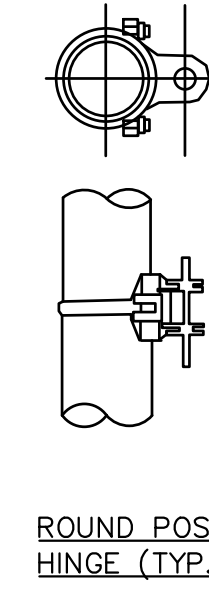


- NOTES
1. INSTALL ALL FENCING COMPONENTS PER MANUFACTURES SPECIFICATIONS.
 2. ALL FENCING AND HARDWARE SHALL BE GALVANIZED, UNLESS OTHERWISE NOTED.
 3. HINGE POSTS MAY BE TIMBER IF CONTRACTOR DESIRES, TIMBER HINGE POSTS DO NOT NEED TO BE SET IN CONCRETE. UTILIZE HINGE THRU BOLTS TO CONNECT TO TIMBER HINGE POSTS OR LAG SCREWS, PER MANUFACTURERS RECOMMENDATIONS.
 4. IF CONTRACTOR UTILIZES METAL HINGE POST THEN POSTS SHALL BE SET IN CONCRETE AS SHOWN ON DETAIL.
 5. BRACING REQUIRED AT FOR ALL GATES. SEE FIXED KNOT FARM FENCE DETAIL.
 6. FIXED KNOT WIRE MESH TO BE BEKAERT SOLIDLOCK® PRO, 12.5 GAUGE, CLASS 3 GALVANIZED, 6" VERTICAL SPACING OR APPROVED EQUAL.
 7. BRACE RAILS AND/ OR TRUSS RODS ARE NOT SHOWN, MAY BE REQUIRED PER MANUFACTURES RECOMMENDATIONS

2 FIXED KNOT FARM FENCE PERSONNEL GATE (WITH WILDLIFE GAP)
C-700

SCALE: NTS

DETAILS SHOWN ON THE CIVIL DETAIL SHEETS THAT ARE NOT NOTED IN THE PLANS ARE PROVIDED FOR REFERENCE ONLY AND SHOULD BE UTILIZED, IF NEEDED, REFER TO SHEET C-200 GENERAL NOTES FOR ADDITIONAL INFORMATION. CONTRACTOR SHALL OBTAIN WRITTEN APPROVAL FROM THE ENGINEER PRIOR TO USING ANY ALTERNATIVE MEASURES UNLESS OTHERWISE NOTED IN THE PLANS AND GENERAL NOTES.



nexamp
301 Sennett Street, 2nd Floor, Boston, MA 02109
Tel: 617-512-5440 Fax: 617-512-5252 Web: nexamp.com

KNOBELSDORFF
2074 137TH STREET
GOODHUE, MN 56527

Kimley-Horn
2005 KIMLEY-HORN AND ASSOCIATES, INC.
5710 LAKE COOK ROAD, SUITE 200
DEERFIELD, IL 60015
WWW.KIMLEY-HORN.COM

Rev	Issued For	Date
0	90% CIVIL PLANS	6/12/2025
1	ISSUED FOR REVIEW	8/1/2025
2	ISSUED FOR PERMIT	10/28/2025

Project:

CEMETERY SUN, LLC
SCHUYLER COUNTY

24638 ADAMS RD
FREDRICK, IL 62639

Drawing Title:

CONSTRUCTION DETAILS

Dwg No: C-700 Size: D Sheet Rev: 2

Approved by: APK
Drawn by: LAD

Call Before You Dig
811
1-800-892-0123

PRELIMINARY - NOT FOR CONSTRUCTION

Company Confidential - This drawing or print is the property of Nexamp, Inc. and is subject to return on request. The design concepts and information contained herein are proprietary to Nexamp, Inc. and its subsidiaries and are submitted in confidence. They are not transferable and must be used only for the purpose for which the Drawing/print is expressly loaned. They must not be disclosed, reproduced detrimental to the interest of Nexamp, Inc. All patent rights are reserved unless they are expressly assigned in writing by a duly authorized representative of Nexamp, Inc.