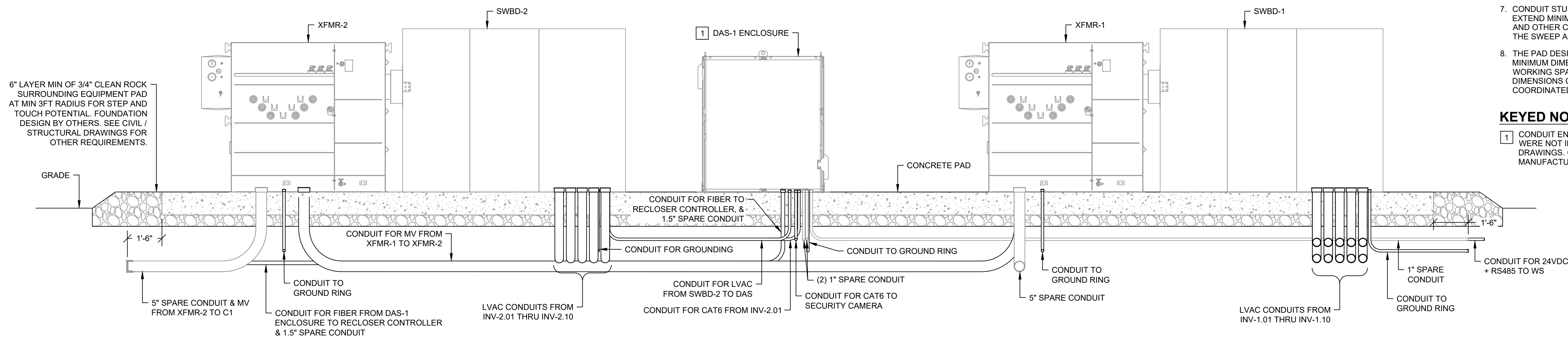
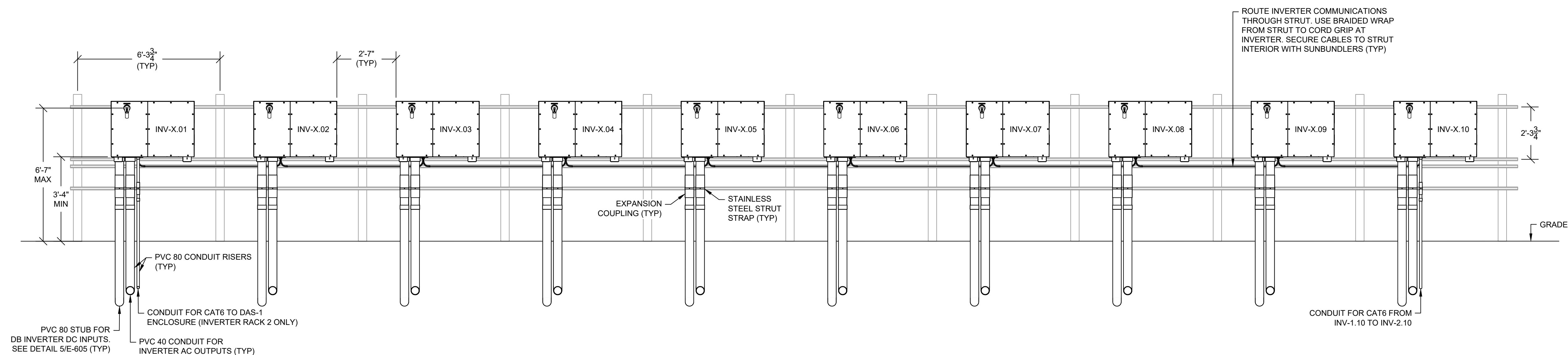
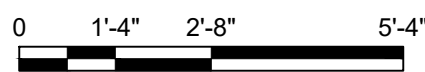


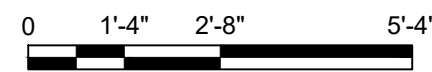
THIS EDGE INTENTIONALLY LEFT BLANK FOR BINDING - PAPER SIZE 34" X 22" - THIS EDGE INTENTIONALLY LEFT BLANK FOR BINDING - PAPER SIZE 34" X 22" - THIS EDGE INTENTIONALLY LEFT BLANK FOR BINDING - PAPER SIZE 34" X 22" - THIS EDGE INTENTIONALLY LEFT BLANK FOR BINDING - PAPER SIZE 34" X 22"



1 ELEVATION - EQUIPMENT PAD
SCALE: 3/8" = 1'-0" 1



2 TYPICAL ELEVATION - INVERTER RACK
SCALE: 3/8" = 1'-0" 1



SHEET NOTES:

1. DRAWING IS DIAGRAMMATIC AND INDICATES RECOMMENDED ROUTING. CONTRACTOR SHALL COORDINATE EXACT ROUTING WITH FIELD CONDITIONS AND SUBMIT PLANNED MODIFICATIONS TO ENGINEER FOR APPROVAL.
2. FOLLOW EQUIPMENT MANUFACTURER'S INSTRUCTIONS FOR EQUIPMENT INSTALLATION.
3. WORKING CLEARANCES TO BE PROVIDED FOR ALL EQUIPMENT PER NEC 110.26 AND 110.34 BASED ON VOLTAGE AND CONDITIONS AS REQUIRED.
4. NO MORE THAN A TOTAL OF 360° BENDS ON A CONDUIT RUN. CONTRACTOR SHALL INSTALL PULL BOX AS NECESSARY.
5. ALL UNDERGROUND CONDUITS SHALL BE PVC 40. ALL 90° UNDERGROUND ELBOWS FOR COMMUNICATION CONDUITS SHALL BE RMC. IF A CONDUIT RUN EXCEEDS 100', THE 90° UNDERGROUND ELBOWS AT THE PULLING END OF THE CIRCUIT SHALL BE IMC. ALL OTHER UNDERGROUND ELBOWS AND STUB UPS SHALL BE PVC 80, UON.
6. PROVIDE EXPANSION FITTINGS ON ALL CONDUIT RISERS AND LEAVE ADDITIONAL SACK FOR ALL CONDUCTORS PRIOR TO TERMINATION TO ALLOW FOR ANNUAL FROST HEAVE.
7. CONDUIT STUBS FOR GEC TO GROUND RING SHALL EXTEND MINIMUM 18" FROM PAD EDGE. ALL SPARES AND OTHER CONDUIT STUBS TO EXTEND 10" FROM THE SWEEP AND AT LEAST 18" FROM PAD EDGE.
8. THE PAD DESIGN SHALL BE SIZED WITH THE MINIMUM DIMENSIONS FOR EQUIPMENT AND WORKING SPACE CLEARANCES AS SHOWN. FINAL DIMENSIONS OF THE EQUIPMENT PAD/S SHALL BE COORDINATED WITH STRUCTURAL AND CIVIL.

KEYED NOTES:

- 1 CONDUIT ENTRY DIMENSIONS AND LOCATION WERE NOT INDICATED IN THE MANUFACTURER SHOP DRAWINGS. CONTRACTOR TO COORDINATE WITH MANUFACTURER.

DESIGN COORDINATOR



KNOBELSDORFF

25701 370TH STREET
GOODHUE, MN 55027

PROJECT

138883 CEMETERY

SUN, LLC

24638 ADAMS RD,
FREDERICK, IL 62639
40.089020°, -90.442132°

ENGINEER



STELLAVISE
SOLAR ENGINEERING

2535 CAMINO DEL RIO S, STE. 235
SAN DIEGO, CA 92108
IL DESIGN FIRM #184.009162

WWW.STELLAVISE.COM

(619) 837-5331

SEAL



THIS DRAWING AND ALL INFORMATION HEREIN IS THE PROPERTY OF STELLAVISE INC. ANY REPRODUCTION, MODIFICATION OR USE OF THIS DRAWING FOR OTHER THAN THE INTENDED PROJECT WITHOUT PRIOR WRITTEN AUTHORIZATION FROM STELLAVISE INC. IS STRICTLY FORBIDDEN

REVISIONS

| # | DESCRIPTION | DATE |
|---|-------------|------------|
| 0 | IFC | 02/06/2026 |
| 1 | IFC R1 | 02/27/2026 |

ISSUED FOR CONSTRUCTION
FEBRUARY 27, 2026

138883 CEMETERY
SUN, LLC
FREDERICK, IL, 62639

SHEET TITLE

ELEVATIONS

SHEET NO.

E-307