

VOLTAGE TRANSFORMER URS-36

OPERATION MANUAL



Outdoor service



Rev.: 0

Date: 22/12/2017

© Transformadores y Tecnología, S.A. de C.V

RESTRICTED USE DOCUMENT.

This document cannot be reproduced fully or partially without Arteche's written authorization.

While every effort has been made to assure accuracy, the information in this document is subject to change without notice.

TABLE OF CONTENTS

	Page.
Chapter 1. SCOPE AND GOAL	4
Chapter 2. TECHNICAL DESCRIPTION	4
2.1 MANUFACTURE AND DESIGN.	4
2.2 APPLICATION	5
2.3 DIMENSIONS	5
2.4 PARTS LIST	6
2.5 TECHNICAL CHARACTERISTICS	6
Chapter 3. INSTALLATION INSTRUCTIONS	8
3.1 SECURITY DURING INSTALLATION	8
3.2 CONNECTIONS SCHEME	9
3.3 FIELD TESTS	9
3.4 MOUNTING	9
Chapter 4. SERVICE CONDITIONS	10
Chapter 5. MAINTENANCE	11
Chapter 6. TROUBLESHOOTING	12
Chapter 7. UNPACKING AND HANDLING	12
Chapter 8. CONTACT INFORMATION	13
Annex 1. DIMENSIONAL DRAWING	14
Annex 2. DIMENSIONAL DRAWING	15

Chapter 1. GOAL AND SCOPE

This manual is applicable for the ARTECHE Voltage Transformer model URS-36 with an insulation class of 34.5kV per ANSI / IEEE C57 (35kV IEC). The goal of this Operation Manual is to provide general knowledge regarding the application, manufacturing, storing, installing and maintenance of this unit.

Chapter 2. TECHNICAL DESCRIPTION

2.1 MANUFACTURE AND DESIGN

Arteche Model URS transformers are dry type outdoor service voltage transformers. The core is encapsulated with Type B epoxy resin which provides excellent internal dielectric properties and mechanical strength. The external layer of Cycloaliphatic Epoxy Resin (CEP) or optional Hydrocycloaliphatic Epoxy Resin (HCEP) provides resistance to ultraviolet rays and the effects of tracking and erosion on the exterior of the transformer ensuring a long mechanical and electrical life.



The core is built with high permeability grain oriented silicon steel laminations for low losses. The windings are copper wire with copper plate double isolation. The concentric distribution of the coils prevents magnetic flux leakage, achieving greater accuracy and higher capacity to withstand mechanical stresses in adverse operating conditions.

The Arteche Model URS transformers are designed for mounting on poles or substation structures. They can be mounted in horizontal or vertical position. Its base plate is made of galvanized steel.

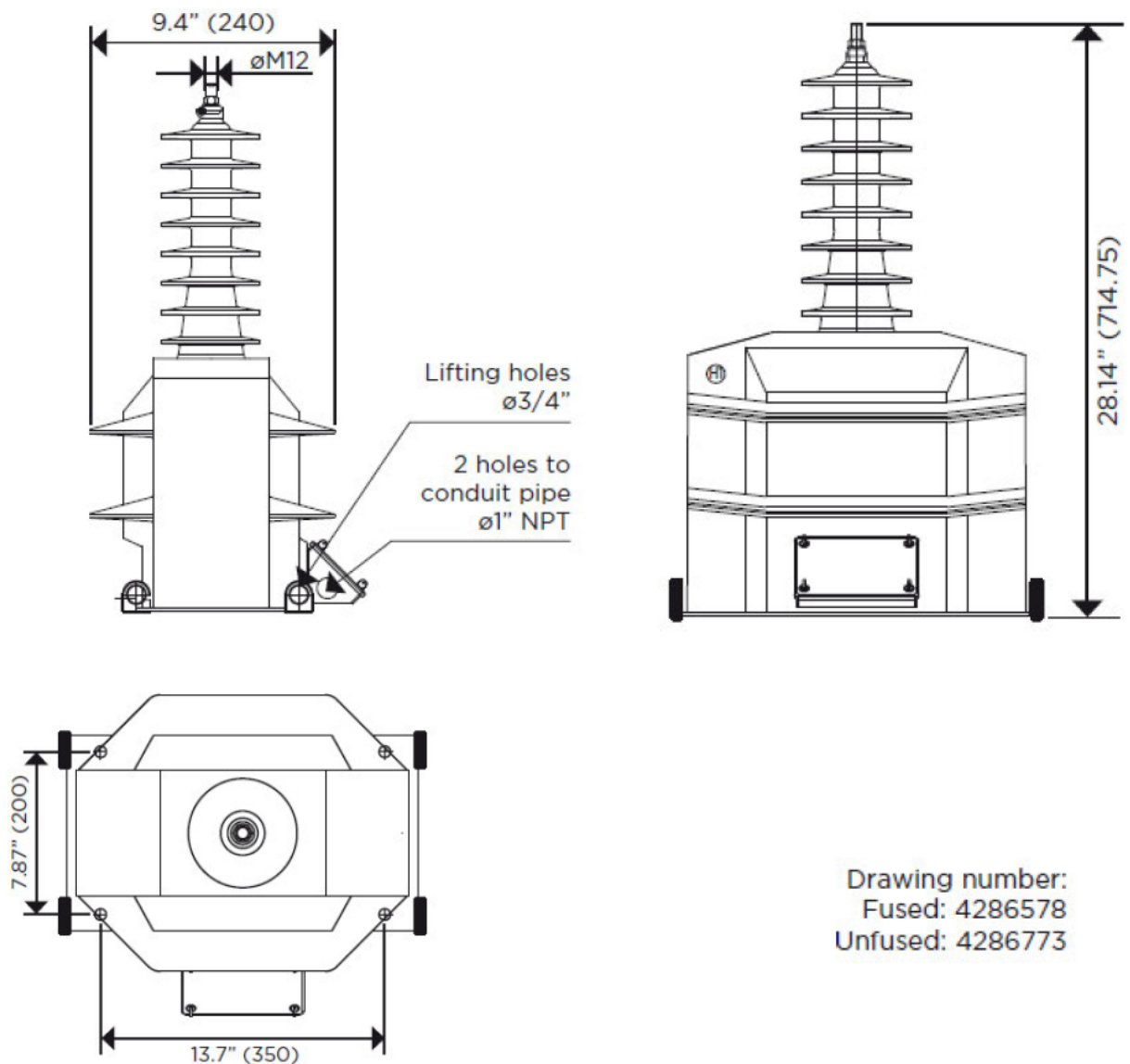
2.2 APPLICATION

The Arteche Model URS-36 voltage transformer is designed for metering and relaying outdoor service applications for systems with voltages of 34.5 kV (IEEE C57.13-2016) at 60Hz.

2.3 DIMENSIONS

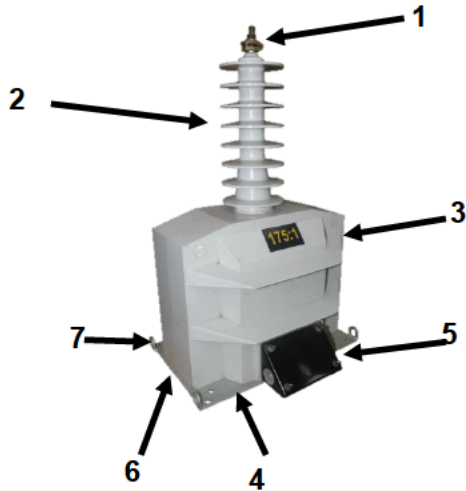
Mechanical characteristics

Insulation Material	Color	Weight	Creepage distance	Strike distance
Resin	Gray	174 lbs.	49.6 in	25.2 in



2.4 PARTS LIST

Below is a list of the most significant parts of the Artech Model URS-36 voltage transformer.



Parts list.

1. Primary terminal
2. Bushing (Cycloaliphatic Resin)
3. Housing (Cycloaliphatic Resin)
4. Base plate
5. Secondary terminal output box
6. Nameplate with technical characteristics
7. Ground connection terminal

2.5 TECHNICAL CHARACTERISTICS

Electrical characteristics

Code * (CEP)	Ratio	Primary (V)	Secondary (V)	IEEE Metering Accuracy	Continuous Rated Voltage Factor (Un)	Rated Voltage Factor 30 s (Un)	Thermal Burden (VA)	Nominal Voltage System (kV)	BIL (kV)	Power-Frequency Withstand Voltage (1 min)	
										Primary & Secondary (kV _{rms})	Secondary Winding (kV _{rms})
With FUSE in the secondary box											
757861140	140:1	16800/29098GY	120	0.3 W,X,M,Y	1.1	1.73	1000	34.5	200	70	2.5
757863240	140/240:1	16100/27886GY	115/67.08	0.3 W,X,M,Y	1.1	1.73	1000	34.5	200	70	2.5
757861166	166:1	19920/34500GY	120	0.3 W,X,M,Y	1.1	1.73	1000	34.5	200	70	2.5
757861175	175:1	20125/34857GY	115	0.3 W,X,M,Y	1.1	1.73	1000	34.5	200	70	2.5
757863300	175/300:1	20125/34857GY	115/67.08	0.3 W,X,M,Y	1.1	1.73	1000	34.5	200	70	2.5
Without FUSE in the secondary box											
757860140	140:1	16800/29098GY	120	0.3 W,X,M,Y	1.1	1.73	1000	34.5	200	70	2.5
757868240	140/240:1	16100/27886GY	115/67.08	0.3 W,X,M,Y	1.1	1.73	1000	34.5	200	70	2.5
757860166	166:1	19920/34500GY	120	0.3 W,X,M,Y	1.1	1.73	1000	34.5	200	70	2.5
757860175	175:1	20125/34857GY	115	0.3 W,X,M,Y	1.1	1.73	1000	34.5	200	70	2.5
757868300	175/300:1	20125/34857GY	115/67.08	0.3 W,X,M,Y	1.1	1.73	1000	34.5	200	70	2.5

* For HCEP Option add (-H) to the end of the code number.
Additional ratings available upon request.

Chapter 3: INSTALLATION INSTRUCTIONS

3.1 SECURITY DURING INSTALLATION

IMPORTANT: BEFORE INSTALLING THE AND ENERGIZING THE TRANSFORMERS, it is important to carryout a visual inspection of the transformer and associated equipment looking for any damage that may have occurred during the transportation of the unit. Please contact your local Arteche representative if any issue is found upon inspection.



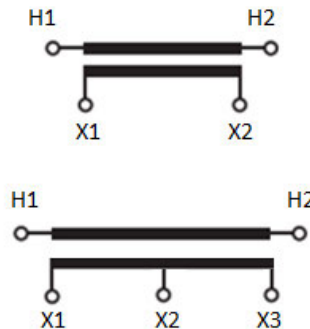
The installation and wiring of the URS instrument transformer must be carried out by qualified trained personnel. This manual is written only for such qualified persons and is not intended to be a substitute for adequate training and experience in the safety procedures for this device. Errors in mounting and connecting the unit can result in poor operation or complete failure of the transformer.

- a) The ground terminal of the transformer must be solidly connected to ground.
- b) The secondary windings, must be connected through one of their terminals. In case of having a central tap, the common terminal must be grounded.
- c) Verify that the primary and secondary terminal connections are clean and correctly tightened.
- d) Verify the correct external wiring. Terminal polarity must also be verified.
- e) **DANGER!** When energizing the voltage transformers ensure that the secondary (X1-X2) is not connected together; otherwise, a short circuit on the secondary side of the voltage transformer can occur causing failure of the voltage transformer.



3.2 CONNECTION SCHEMATICS

Primary and secondary windings must be connected according to the polarity markings indicated on the characteristics schematic nameplate. The secondary marking is engraved over the resin on the transformers housing.



For the secondary terminals, the transformer is supplied with a plastic box with threaded holes suitable for $\varnothing 1"$ NPT interconnections.

3.3 FIELD TESTS.

All the Arteche transformers are individually factory tested in accordance with the latest revision of the following applicable standards: IEEE C57.13-2016; IEC 61869-1; IEC 61869-2, 61869-3, CAN/CSA, as well as customer specifications and requirements. All these tests are undertaken within an ISO 9001 certified factory quality system.



As such no additional field testing for the URS-36 is required, since every unit is individually tested (routine tests) in the factory. However, if an end user elects to perform additional field testing before energizing, then the following tests are recommended:

- Check the wiring and connections. Ensure that the connections are tight and have continuity.
- Check the polarity markings on the transformers.
- Polarity check.
- Ratio check (with a TTR)

IMPORTANT: Be aware that conducting field dielectric tests with direct current can saturate the core of the transformer leading to erroneous test results. Likewise, resistance insulation testing is not necessarily an accurate representation of the quality of the transformer's insulation system.

3.4 MOUNTING

The Arteche Model URS-36 voltage transformer can be mounted horizontally or vertically. The transformers are fixed with four screws and washers fitting the hole's sizes provided by the unit's base plate. The transformer must be mounted on a flat surface.

Chapter 4. SERVICE CONDITIONS

The Arteche Model URS-36 voltage transformer is designed for outdoor service conditions that include dust, smoke, salts or corrosive agents to a maximum temperature of 55°C. The transformer is designed to operate between an outdoor temperature range of -40 °C and +40 °C. The average ambient temperature measured in a 24 hour period should not exceed 35 °C. In normal service this unit should not be installed at an altitude exceeding 2500 meters over the sea level.

Consult Arteche engineering for other environmental conditions or altitudes greater than 2,500 meters (8,202 ft) prior to installation.

The transformer's technical performance values are listed on the transformer nameplate and should not be exceeded in order to ensure the expected performance of the unit.

Chapter 5. MAINTENANCE

Arteche instrument transformers are hermetically sealed dry type units that are designed and manufactured to be maintenance free during their life cycle. However, the following maintenance practices can be carried out to help ensure trouble free service:

- Verify the transformers are de-energized. Verify that the primary and the secondary terminals are in good condition and properly torqued.
- Verify the transformers are de-energized. Periodically clean the insulated surface to preserve the creepage distance.
- Verify the transformers are de-energized. Visually inspect the units for evidence of cracks, peeling or separating external insulation resin. If found contact your local Arteche representative as replacement of the affected unit is required.
- Verify the transformers are de-energized. Cover the primary terminal and secondary with silicon grease to avoid future cracking and rust.

It is recommended to carry out the above practices at least every six months to each one of the transformers.

Chapter 6. TROUBLESHOOTING

Issue	Possible Cause	Correction
The unit DOES NOT provides readings in the secondary	Inverted Polarity	Change burden terminals X1- X2
	Defective connection in the secondary winding	Check continuity between terminal and burden's conductor. Tighten terminals on secondary winding.
	False contact in the primary winding	Verify that connection between terminal and primary bar is correct. Tighten primary connector.
	Error in tap connection in the secondary winding	Verify the connection between the terminals as indicated in the nameplate.
DOES NOT complies with nominal accuracy	Operating voltage out of the limits of Nominal voltage	Verify that the line voltage is within the nominal range of the transformer's application.
	Unit is permanently saturated	Contact ARTECHE
Buzzing sound around the transformer	Operating voltage outside the limit of the Nominal Voltage	Verify that the line voltage is within the nominal range of the transformer's application.
	Ionization of the environment and insulators	Clean the insulator's surfaces. If the problem remains contact ARTECHE.

Chapter 7. UNPACKING AND HANDLING

The transformers are shipped in wooden crates and placed in a vertical position.

Every crate is marked and fully identified with the known international symbols of transport.



When a unit is received an inspection should immediately be made to verify that the shipping crates do not show any signs of shipping damage. Any noted shipping damage should be reported to the carrier and fully document on the receiving paperwork and reported to your local Arteche representative. Please add pictures, or any useful evidence to describe the shipping damage. Unless duly noted at the time of receipt of the unit Arteche will consider the unit to have been delivered in good condition.

For appropriate unpacking the upper cover must be removed first and then removing the side walls. The unit will be fixed to the wooden base of the crate.



The Arteche Model URS-36 voltage transformer can be manipulated carrying it with hooks that can be attached to their lifting eyes on the base plate. Do not use the primary bushings as lifting points.

Chapter 8. **CONTACT INFORMATION.**

➤ ARTECHE
USA Inc.



HEADQUARTERS

18503 Pines Blvd. Suite 313 Pembroke Pines, Fl. 33029

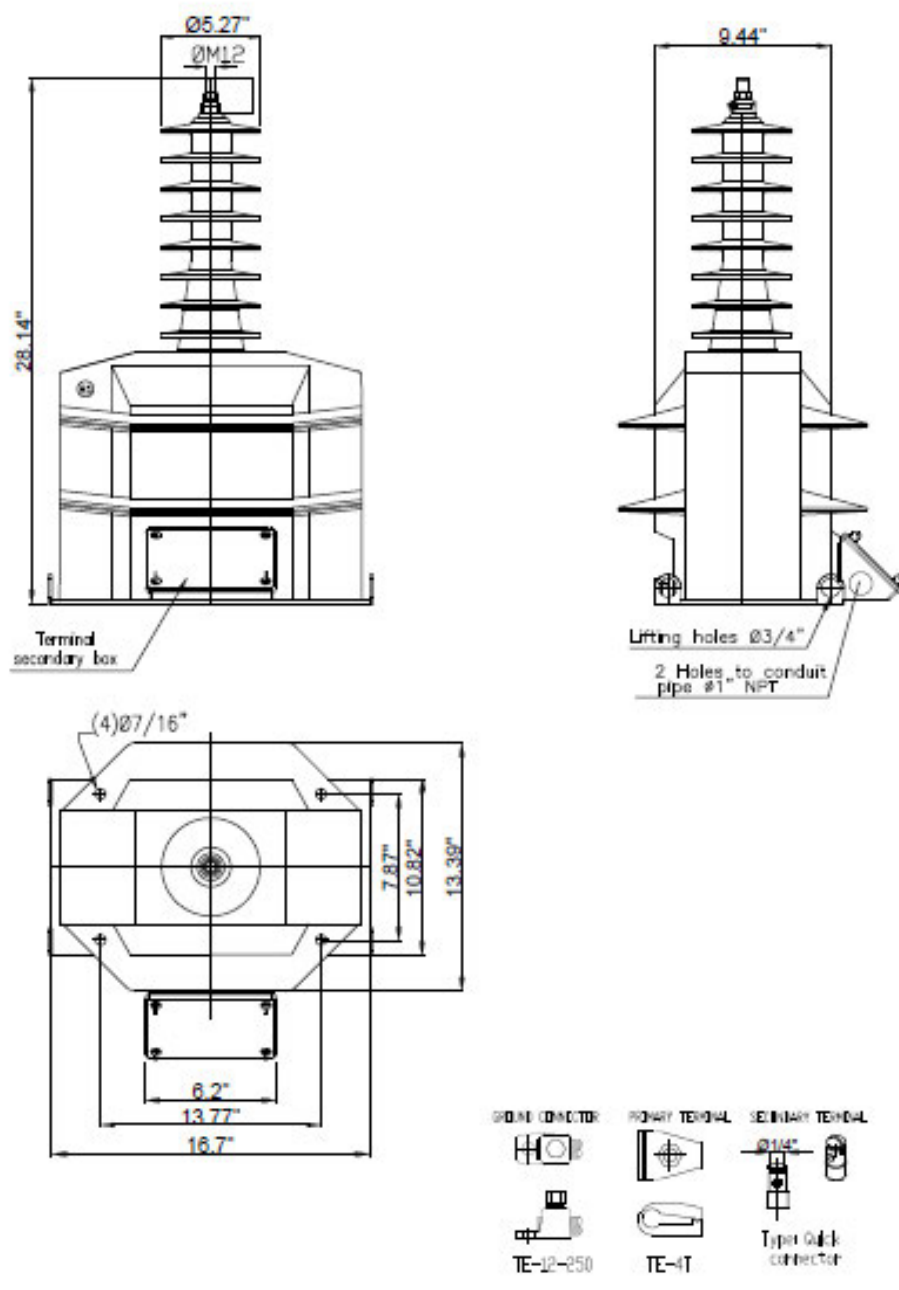
Arteche
Transformadores y Tecnología S.A de C.V.



FACTORY

Km. 73.54 Ant. Carretera México-Querétaro
42850 Tepeji del Río de Ocampo – Estado de Hidalgo

Annex DIMENSIONAL DRAWING



Approximate dimensions in inches

VOLTAGE TRANSFORMER

URS-36

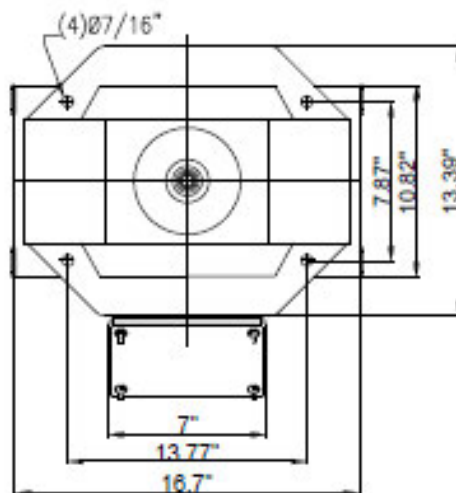
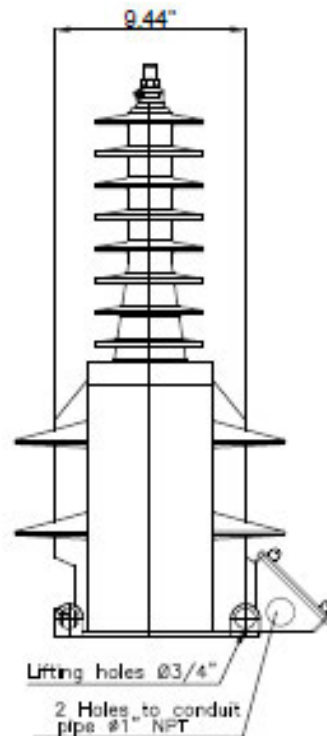
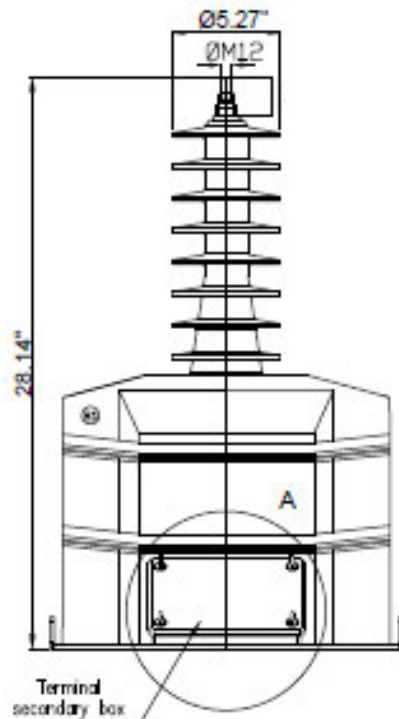
Date
28/10/13

Approved
R.E.S.

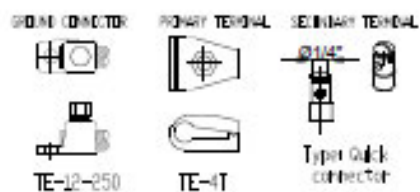
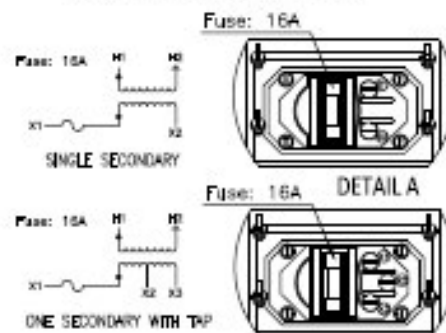
Drawing N°

4286773

Annex DIMENSIONAL DRAWING



SECONDARY TERMINALS DETAIL



APPROX. WEIGHT 174 lbs.
DEEP DISTANCE 40.8 in
SHORE DISTANCE 25.2 in



Approximate dimensions in inches

VOLTAGE TRANSFORMER

URS-36

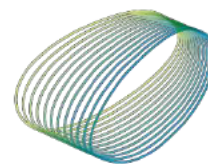
Date
27.06.13

Approved
R. E. S.

Drawing N° 4286578

VOLTAGE TRANSFORMER

URS-36



arteche
Moving together

NOTES:

